



# WEATHER

*Meteorological observations and forecasts*

**Monday 01/01/2018**

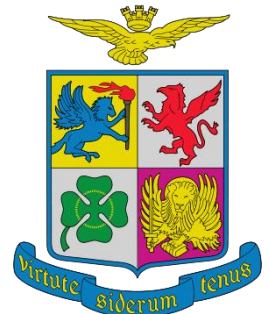
*MET Office - "Mario Zucchelli" Base - Terranova Bay*

Ten. Col. Luigi Verzelletti  
Cap. Francesco Mariella



Agenzia nazionale per le nuove tecnologie,  
l'energia e lo sviluppo economico sostenibile

*Information NOT intended for flight planning and pre-flight*



# Indice dei contenuti

# Table of Contents

*Puoi saltare direttamente sull'argomento di interesse cliccandoci sopra*

*Jump directly to the issue of your interest just clicking on it*

1. [Situazione – Situation](#)
2. [Ultime Misure delle Stazioni Meteo Automatiche - Last Measurements from Automatic Weather Stations](#)
3. [Dati attuali a MZS – Current data at MZS \(ENEIDE – ‘Campo Meteo’\)](#)
4. [Mappe di previsione: oggi ore 07/L – Forecast Maps: today 07/L](#)
5. [Mappe di previsione: oggi ore 13/L – Forecast Maps: today 13/L](#)
6. [Mappe di previsione: oggi ore 19/L – Forecast Maps: today 19/L](#)
7. [Tempo previsto oggi a Baia Terra Nova – Weather Forecast for today at Terra Nova Bay](#)
8. [Mappe di previsione: domani ore 01/L – Forecast Maps: tomorrow 01/L](#)
9. [Mappe di previsione: domani ore 07/L – Forecast Maps: tomorrow 07/L](#)
10. [Mappe di previsione: domani ore 13/L – Forecast Maps: tomorrow 13/L](#)
11. [Mappe di previsione: domani ore 19/L – Forecast Maps: tomorrow 19/L](#)
12. [Tempo previsto domani a Baia Terra Nova – Weather Forecast for tomorrow at Terra Nova Bay](#)
13. [Tendenza per dopodomani a Baia Terra Nova – Weather Tendency for the day after tomorrow at Terra Nova Bay](#)
14. [Valori estremi di ieri – Extreme Values of Yesterday](#)
15. [Andamento delle Temperature durante la Spedizione](#)
16. [Andamento del vento massimo durante la Spedizione](#)
17. [Contatti - Contacts](#)



# WEATHER

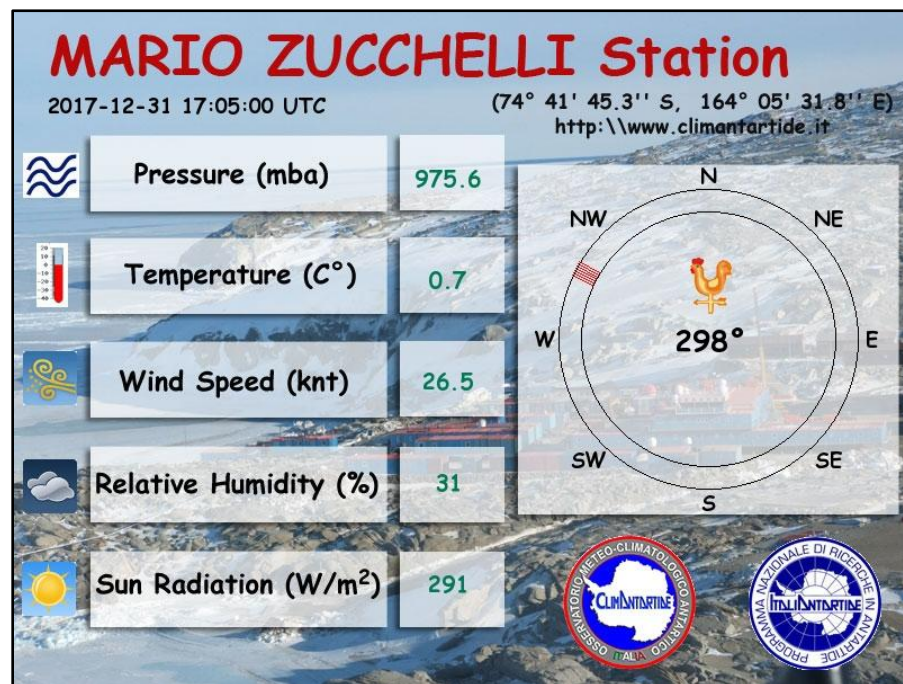
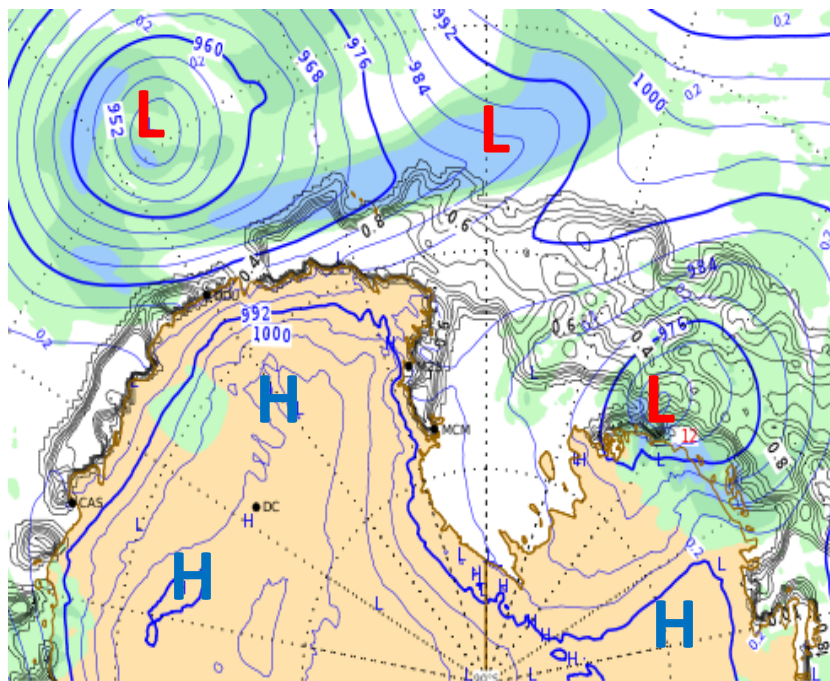
Meteorological observations and forecasts



## Monday 01/01/2018

Sea Level Pressure + Precipitation at 07:00

Latest Report

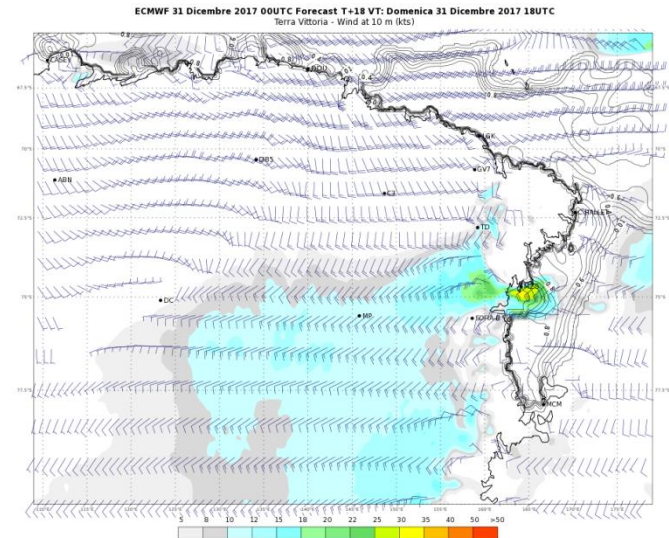
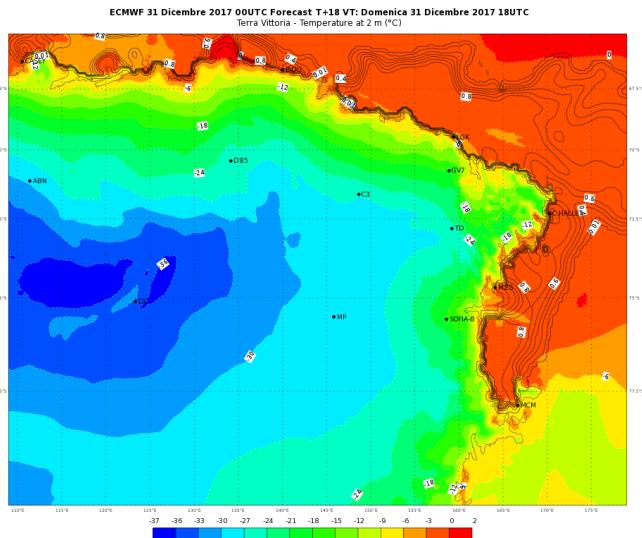
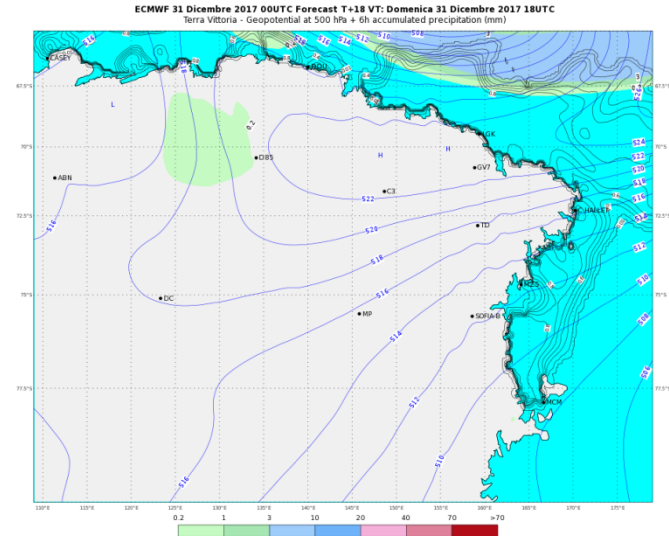
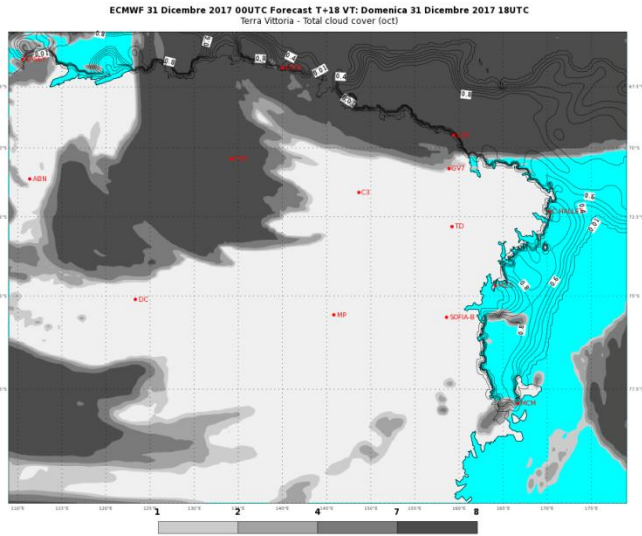


**VENTO AREA BOULDER: WSW 37 KT (06:10 loc time recorded)**

# PREVISIONI - FORECASTS

OGGI - ORE 07 LT

TODAY - 07 LT



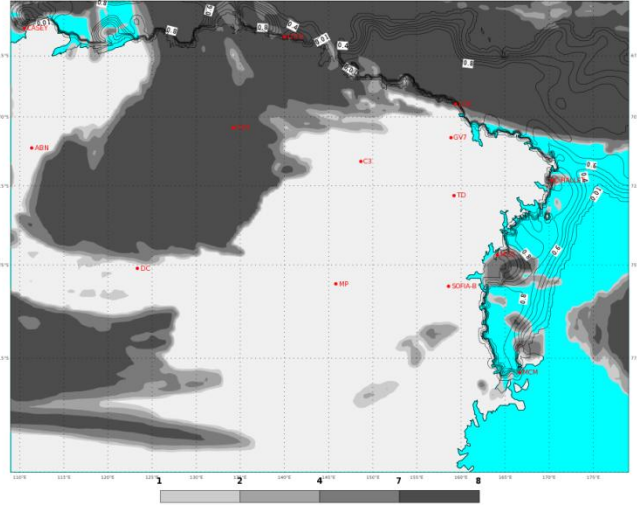


# PREVISIONI - FORECASTS

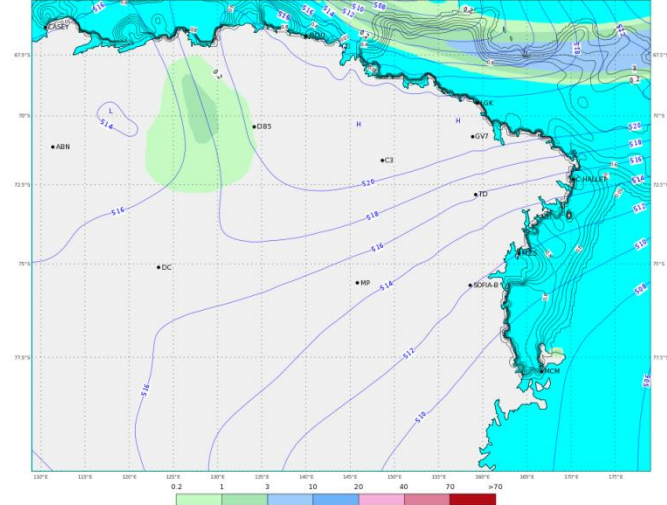
## OGGI - ORE 13 LT

## TODAY - 13 LT

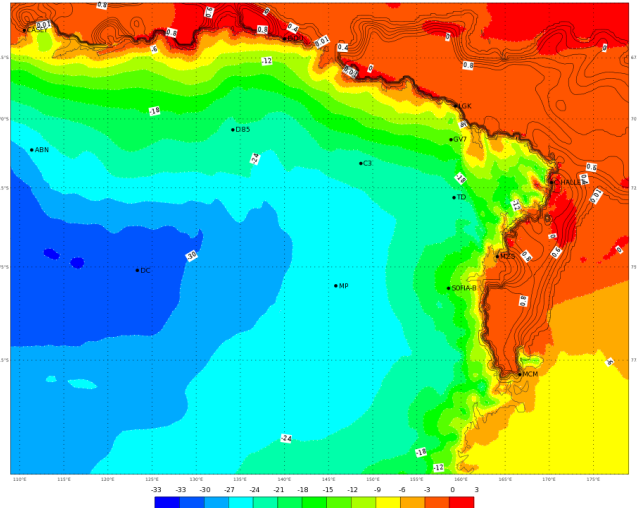
ECMWF 31 Dicembre 2017 00UTC Forecast T+24 VT: Lunedì 01 Gennaio 2018 00UTC  
Terra Vittoria - Total cloud cover (oct)



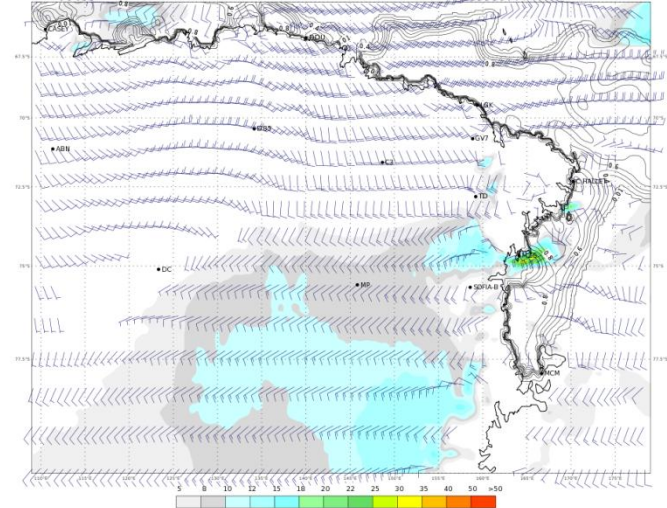
ECMWF 31 Dicembre 2017 00UTC Forecast T+24 VT: Lunedì 01 Gennaio 2018 00UTC  
Terra Vittoria - Geopotential at 500 hPa + 6h accumulated precipitation (mm)



ECMWF 31 Dicembre 2017 00UTC Forecast T+24 VT: Lunedì 01 Gennaio 2018 00UTC  
Terra Vittoria - Temperature at 2 m (°C)



ECMWF 31 Dicembre 2017 00UTC Forecast T+24 VT: Lunedì 01 Gennaio 2018 00UTC  
Terra Vittoria - Wind at 10 m (kts)

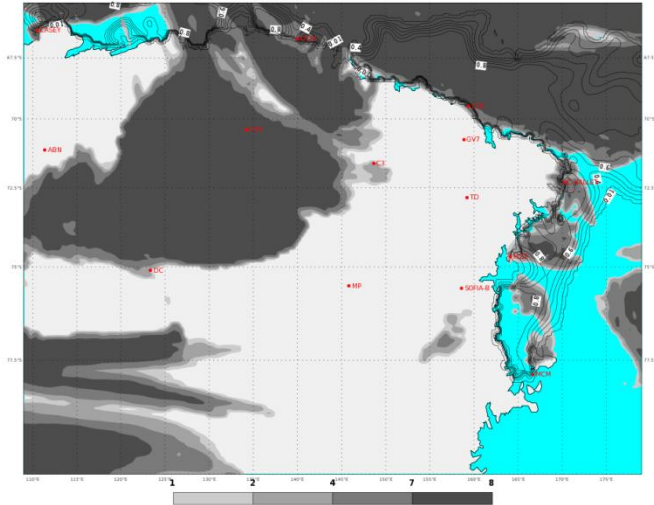


# PREVISIONI - FORECASTS

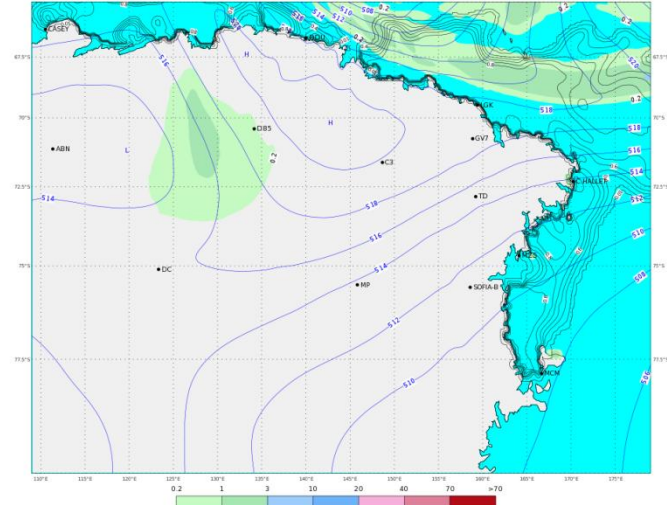
OGGI - ORE 19 LT

TODAY - 19 LT

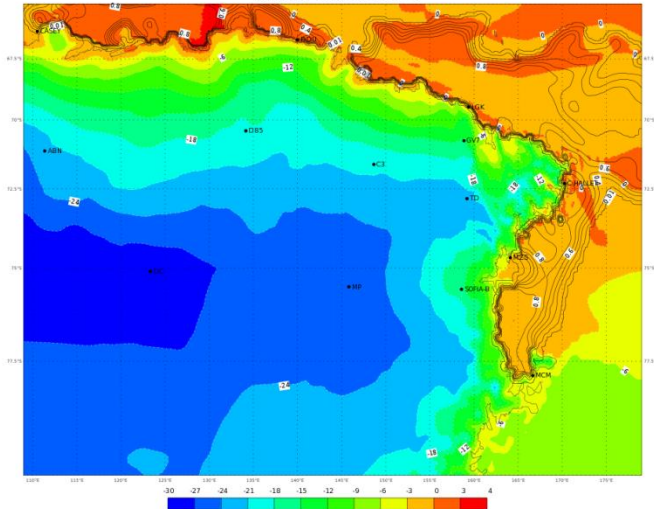
ECMWF 31 Dicembre 2017 00UTC Forecast T+30 VT: Lunedì 01 Gennaio 2018 06UTC  
Terra Vittoria - Total cloud cover (oct)



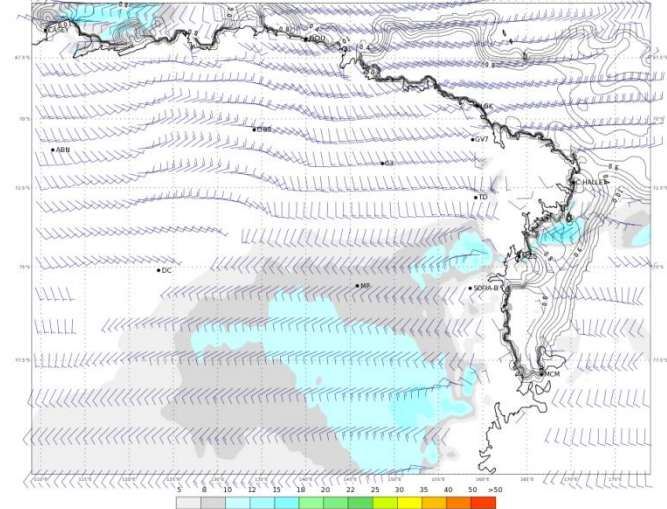
ECMWF 31 Dicembre 2017 00UTC Forecast T+30 VT: Lunedì 01 Gennaio 2018 06UTC  
Terra Vittoria - Geopotential at 500 hPa + 6h accumulated precipitation (mm)



ECMWF 31 Dicembre 2017 00UTC Forecast T+30 VT: Lunedì 01 Gennaio 2018 06UTC  
Terra Vittoria - Temperature at 2 m (°C)






ECMWF 31 Dicembre 2017 00UTC Forecast T+30 VT: Lunedì 01 Gennaio 2018 06UTC  
Terra Vittoria - Wind at 10 m (kts)



# WEATHER FORECAST FOR TODAY AT TERRA NOVA BAY

**Monday 01/01/2018**

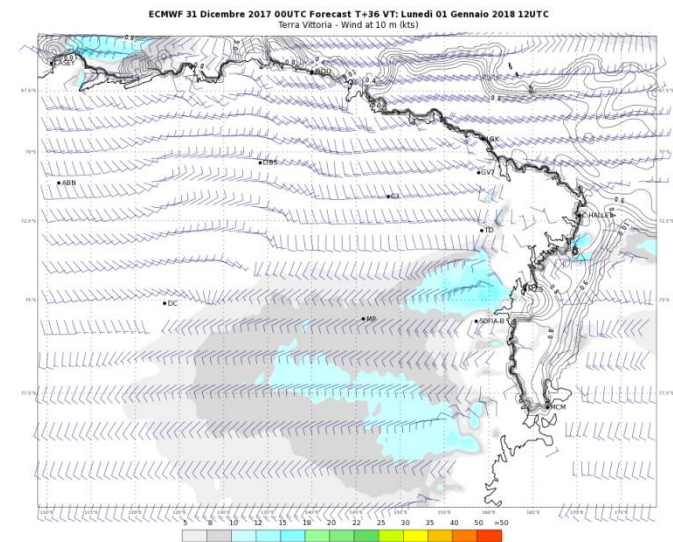
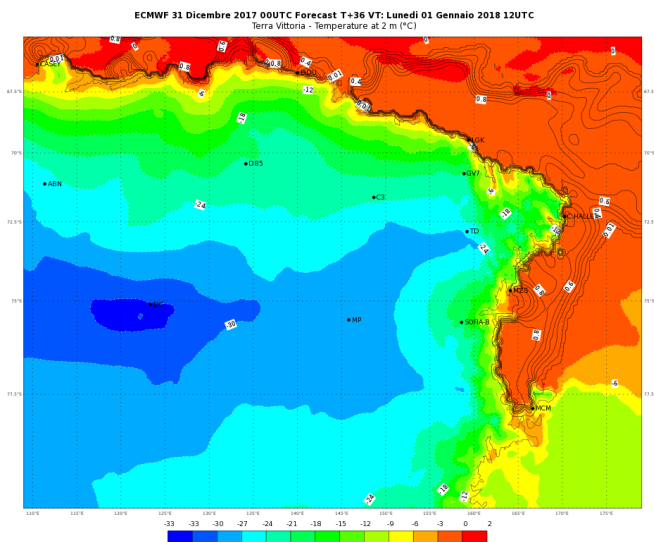
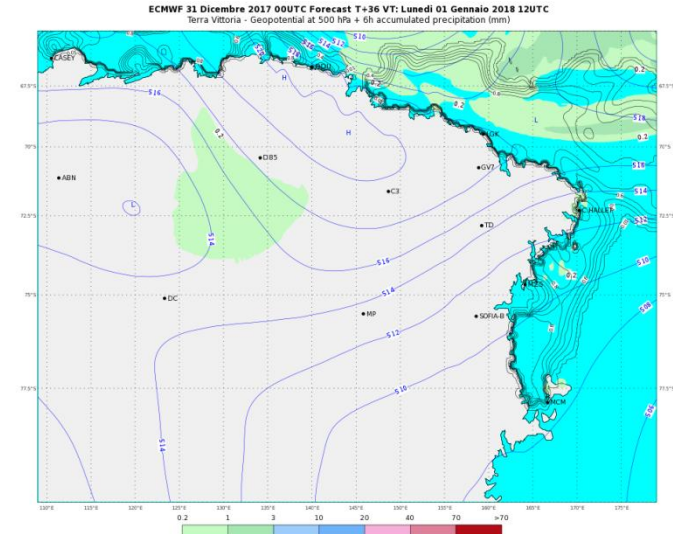
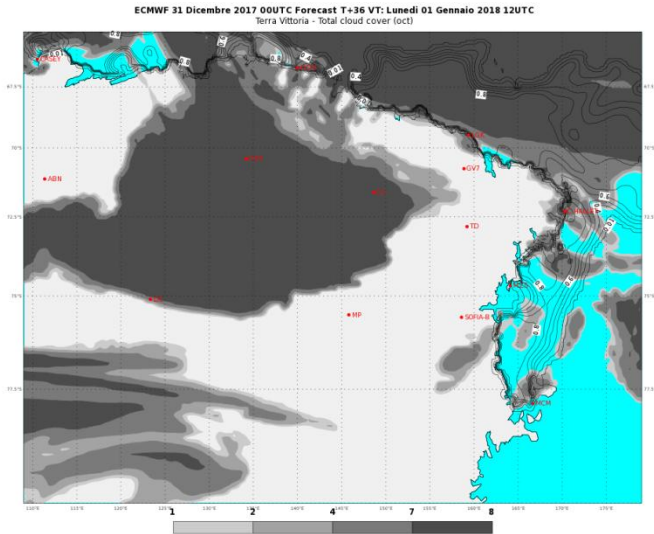
	ORE 07	ORE 13	ORE 19
CIELO			
FENOMENI	DEBOLE CATABATICO	NIL	NIL
VENTO MZS	WSW 25/35 KT	WSW 15/20 KT	WSW 10/15 KT
VENTO BOULDER	WSW 30/40 KT	WSW 20/35 KT	WSW 15/20 KT
TEMPERATURA [°C]	-03/-01 °C	-03/-01 °C	-02/00 °C
WIND CHILL [°C]	-14/-11 °C	-12/-09 °C	-09/-06 °C
AVVISI	NIL	NIL	NIL



# PREVISIONI - FORECASTS

## DOMANI - ORE 01 LT

## TOMORROW - 01 LT

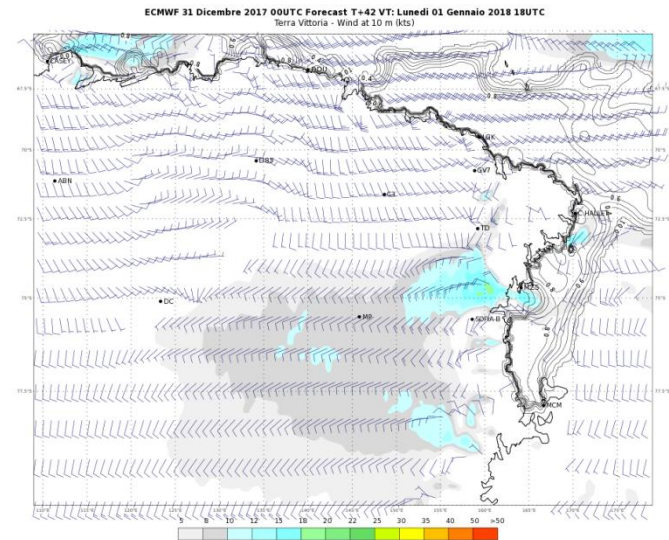
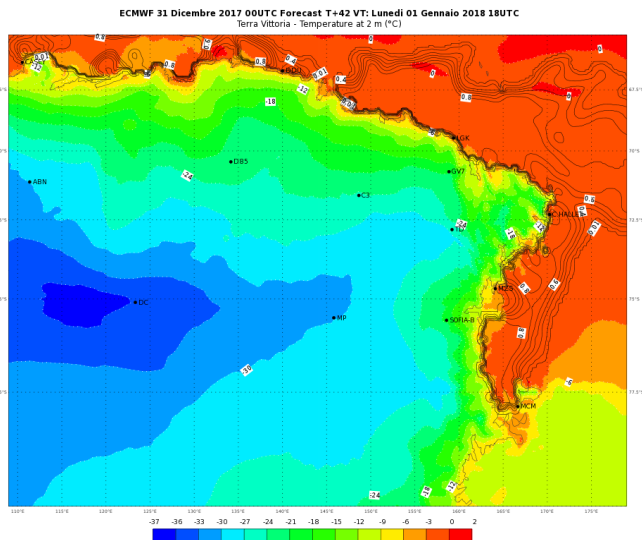
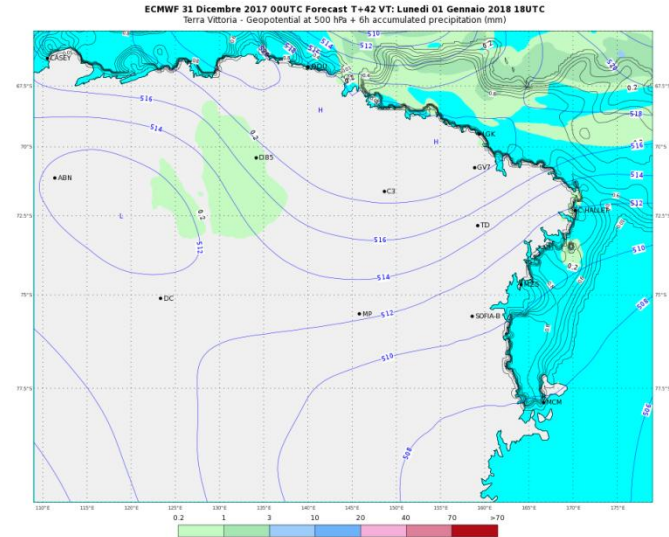
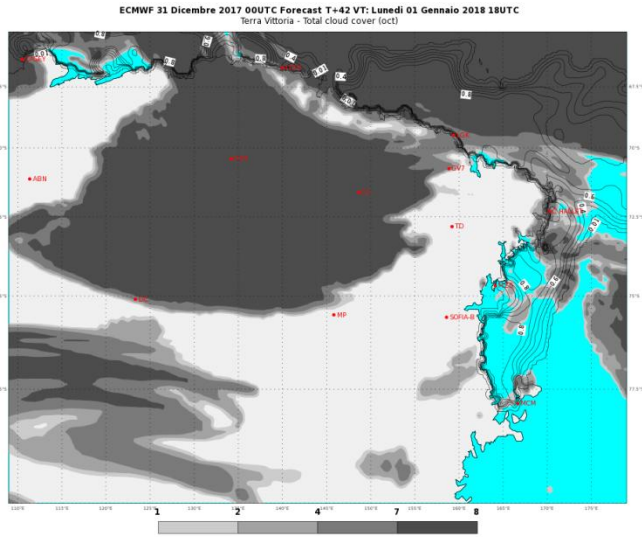




# PREVISIONI - FORECASTS

## DOMANI - ORE 07 LT

## TOMORROW - 07 LT

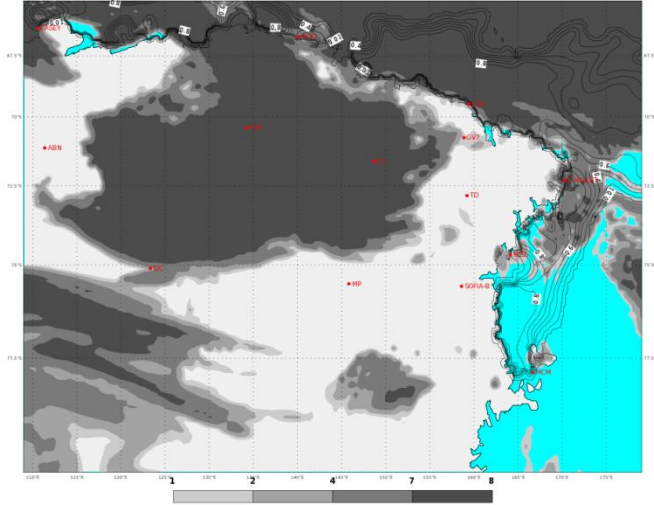


# PREVISIONI - FORECASTS

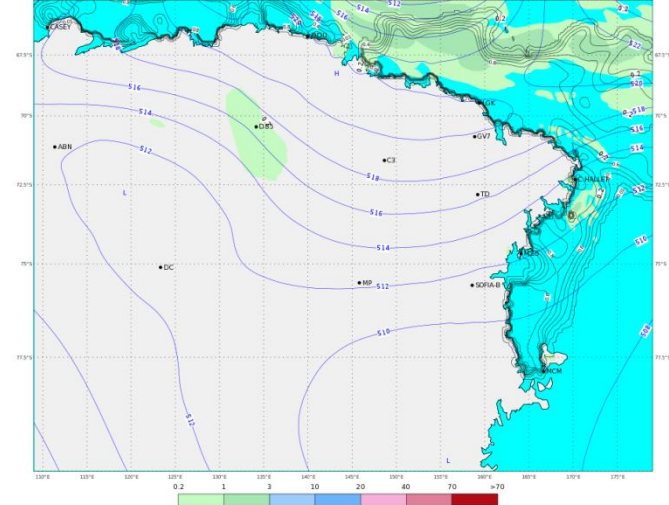
## DOMANI - ORE 13 LT

## TOMORROW - 13 LT

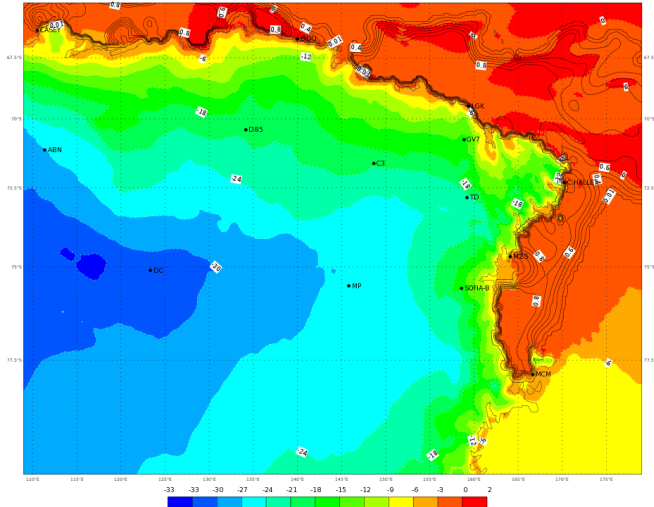
ECMWF 31 Dicembre 2017 00UTC Forecast T+48 VT: Martedì 02 Gennaio 2018 00UTC  
Terra Vittoria - Total cloud cover (oct)



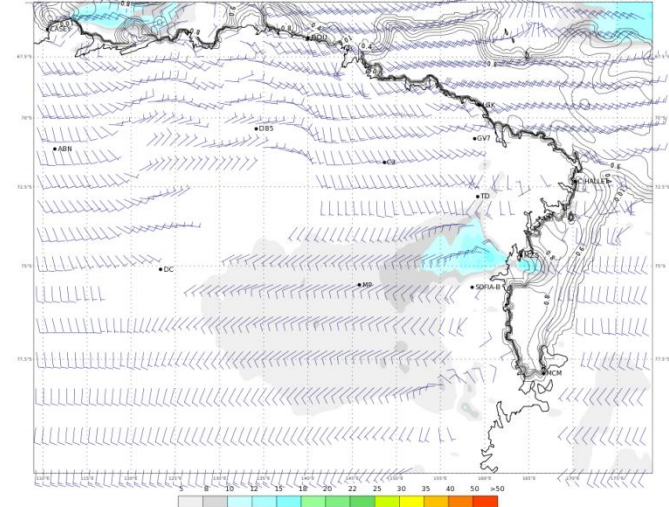
ECMWF 31 Dicembre 2017 00UTC Forecast T+48 VT: Martedì 02 Gennaio 2018 00UTC  
Terra Vittoria - Geopotential at 500 hPa + 6h accumulated precipitation (mm)



ECMWF 31 Dicembre 2017 00UTC Forecast T+48 VT: Martedì 02 Gennaio 2018 00UTC  
Terra Vittoria - temperature at 2 m (°C)



ECMWF 31 Dicembre 2017 00UTC Forecast T+48 VT: Martedì 02 Gennaio 2018 00UTC  
Terra Vittoria - Wind at 10 m (kts)



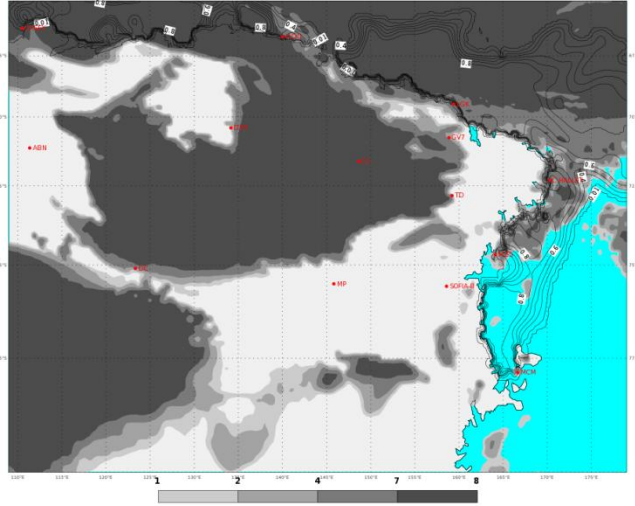


# PREVISIONI - FORECASTS

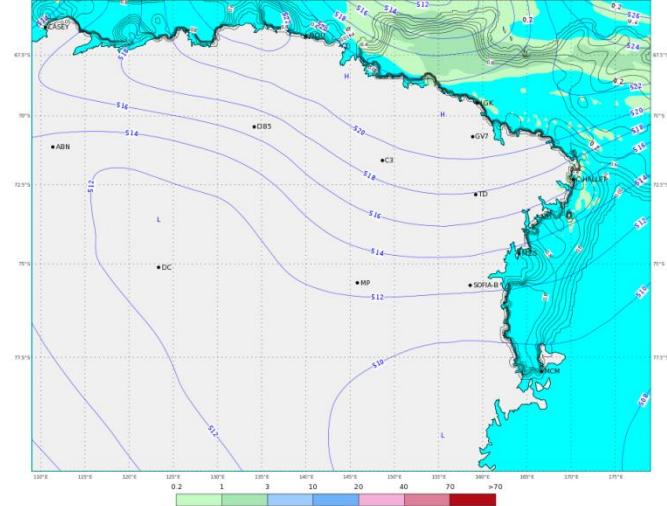
## DOMANI - ORE 19 LT

## TOMORROW - 19 LT

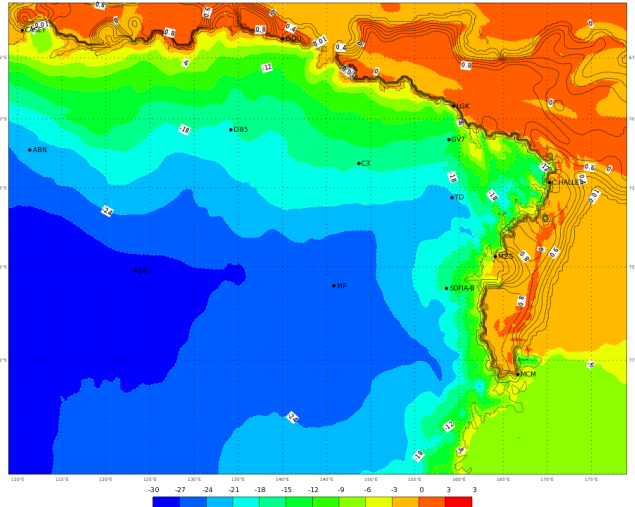
ECMWF 31 Dicembre 2017 00UTC Forecast T+54 VT: Martedì 02 Gennaio 2018 06UTC  
Terra Vittoria - total cloud cover (oct)



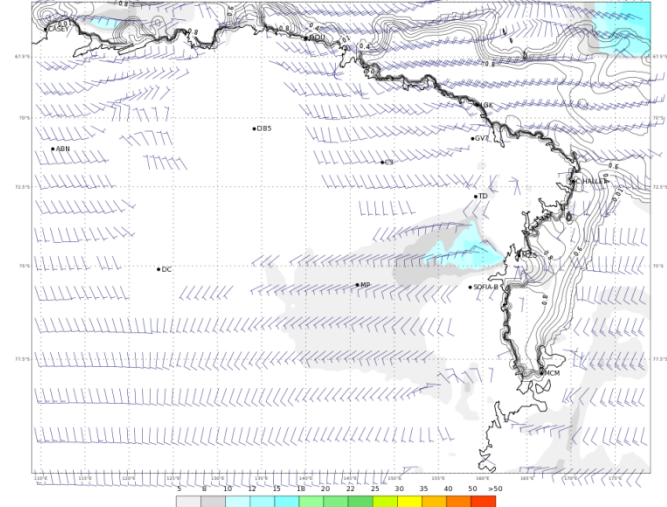
ECMWF 31 Dicembre 2017 00UTC Forecast T+54 VT: Martedì 02 Gennaio 2018 06UTC  
Terra Vittoria - Geopotential at 500 hPa + 6h accumulated precipitation (mm)



ECMWF 31 Dicembre 2017 00UTC Forecast T+54 VT: Martedì 02 Gennaio 2018 06UTC  
Terra Vittoria - temperature at 2 m (°C)






ECMWF 31 Dicembre 2017 00UTC Forecast T+54 VT: Martedì 02 Gennaio 2018 06UTC  
Terra Vittoria - Wind at 10 m (kts)





# WEATHER FORECAST FOR TOMORROW AT TERRA NOVA BAY

## Tuesday 02/01/2018



	ORE 07	ORE 13	ORE 19
CIELO			
FENOMENI	NIL	NIL	NIL
VENTO MZS	WSW 05/10 KT	WSW 05/10 KT	WSW 05/10 KT
VENTO BOULDER	WSW 10/20 KT	WSW 10/20 KT	WSW 10/20 KT
TEMPERATURA [°C]	-04/-02 °C	-03/-01 °C	-02/00 °C
WIND CHILL [°C]	-10/-07 °C	-09/-06 °C	-08/-05 °C
AVVISI	NIL	NIL	NIL

[http://mzs-pdc.mzs.pnra.it/meteo/bollettino\\_meteo.pdf](http://mzs-pdc.mzs.pnra.it/meteo/bollettino_meteo.pdf)

[Indietro all'indice – back to index](#)

# WEATHER TENDENCY AT TERRA NOVA BAY

Wednesday 03/01/2018

	MATTINO	POMERIGGIO
CIELO		
FENOMENI	NIL	NIL
VENTO MZS	WSW 05/10 KT	WSW 05/10 KT
VENTO BOULDER	WSW 10/20 KT	WSW 10/20 KT
TEMPERATURA [°C]	-04/-02 °C	-03/-01 °C
WIND CHILL [°C]	-10/-07 °C	-09/-06 °C
AVVISI	NIL	NIL

[http://mzs-pdc.mzs.pnra.it/meteo/bollettino\\_meteo.pdf](http://mzs-pdc.mzs.pnra.it/meteo/bollettino_meteo.pdf)

[Indietro all'indice – back to index](#)



# Extreme Values of Yesterday



<b>31/12/2017 UTC time (13:00 30/12 - 13:00 31/12)</b>		
<b>MAX temperature</b>	<b>(ore 20:04/L)</b>	<b>+1.7°C</b>
<b>MIN temperature</b>	<b>(ore 04:56/L)</b>	<b>-5.1 °C</b>
<b>MAX humidity</b>	<b>(ore 00:18/L)</b>	<b>78 %</b>
<b>MIN humidity</b>	<b>(ore 20:43/L)</b>	<b>24 %</b>
<b>MAX wind direction/speed</b>	<b>(ore 06:09/L)</b>	<b>225/30.7 KT</b>

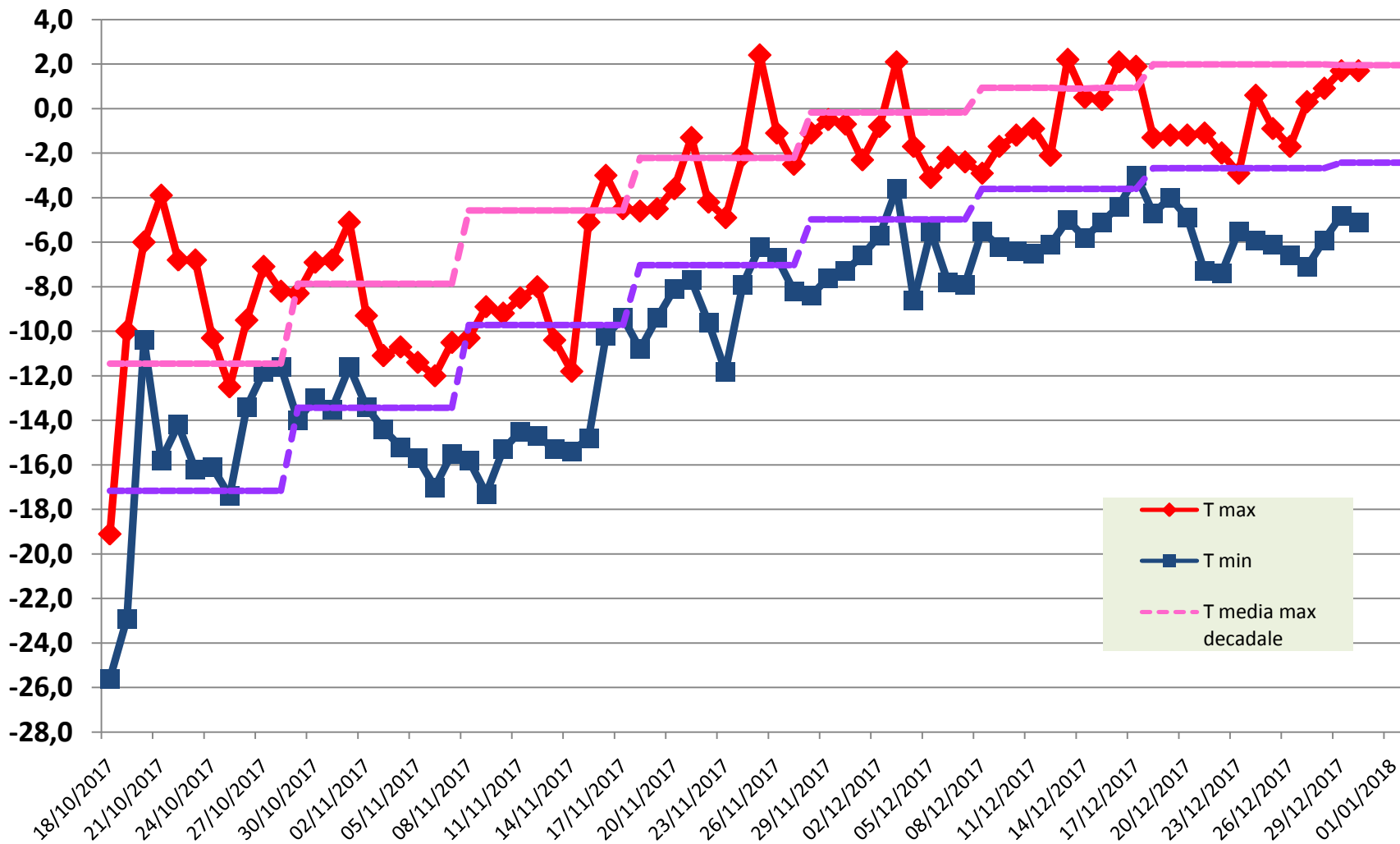
**Remark:** *the reported values are referred to the previous day in terms of Universal Time and not in local time (UTC+13).*





# Temperature measured during the XXXIII Expedition

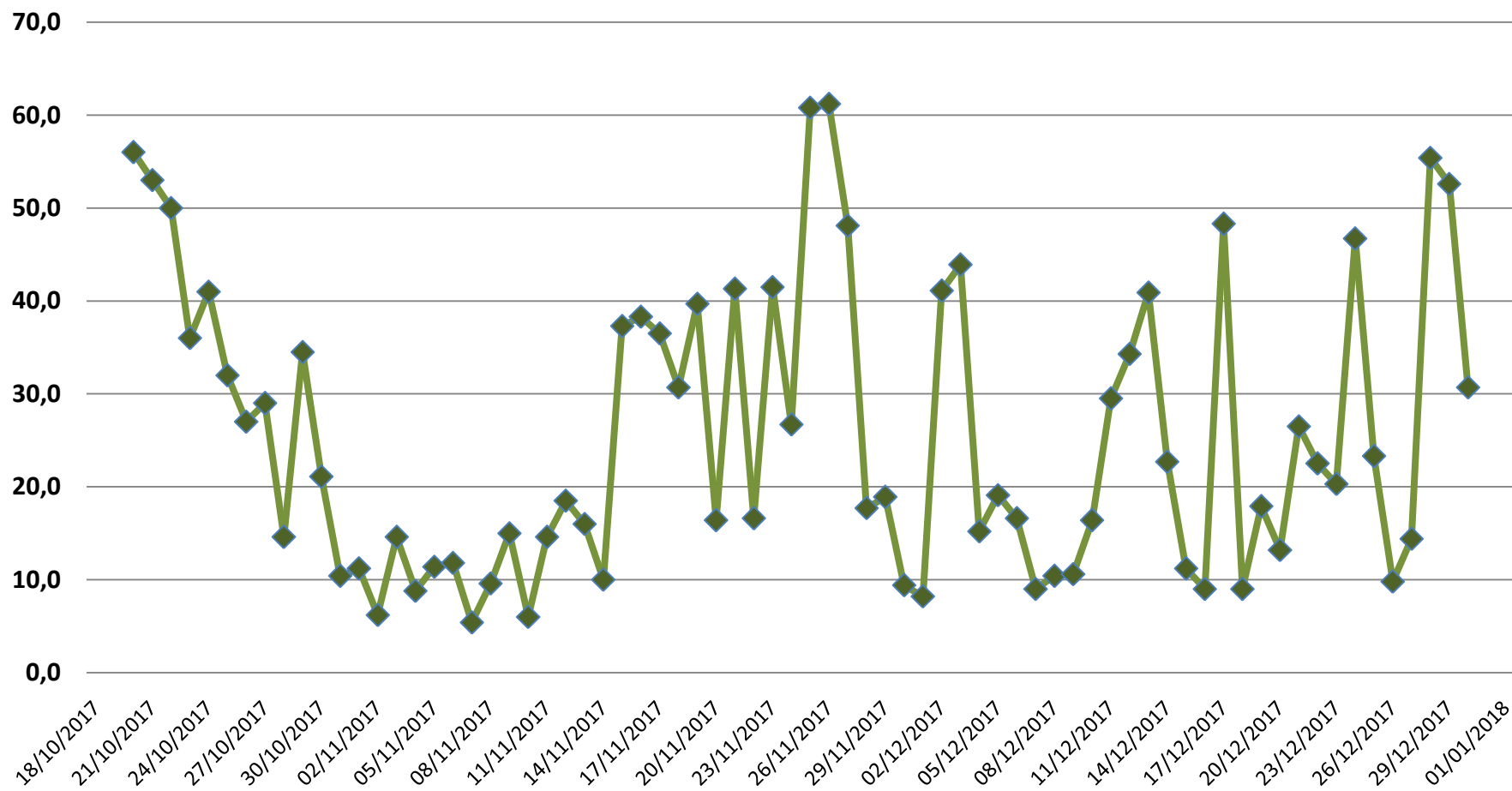
ENEIDE weather station (MZS) - Antarctic Climatology Observatory





# MAX wind [kt] measured during the XXXIII Expedition

ENEIDE weather station (MZS) - Antarctic Climatology Observatory



**Per ulteriori informazioni contattare  
l'Ufficio Meteorologico di MZS  
int. 510**

**For further information please contact  
MZS Met Office  
ext. 510**

*AVVERTENZA/WARNING*

*Le presenti informazioni NON sono destinate alla pianificazione di volo e/o pre-volo  
The informations here presented are NOT intended for flight planning and/or pre-flight*

[Indietro all'indice – back to index](#)