



WEATHER

Meteorological observations and forecasts

Thursday 11/01/2018

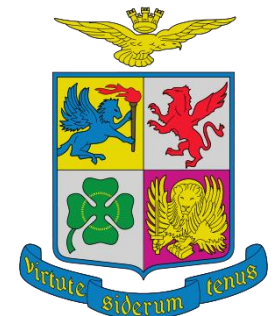
MET Office - "Mario Zucchelli" Base - Terranova Bay

Ten. Col. Luigi Verzelletti
Cap. Francesco Mariella



Agenzia nazionale per le nuove tecnologie,
l'energia e lo sviluppo economico sostenibile

Information NOT intended for flight planning and pre-flight



Indice dei contenuti

Table of Contents

Puoi saltare direttamente sull'argomento di interesse cliccandoci sopra

Jump directly to the issue of your interest just clicking on it

1. [Situazione – Situation](#)
2. [Ultime Misure delle Stazioni Meteo Automatiche - Last Measurements from Automatic Weather Stations](#)
3. [Dati attuali a MZS – Current data at MZS \(ENEIDE – ‘Campo Meteo’\)](#)
4. [Mappe di previsione: oggi ore 07/L – Forecast Maps: today 07/L](#)
5. [Mappe di previsione: oggi ore 13/L – Forecast Maps: today 13/L](#)
6. [Mappe di previsione: oggi ore 19/L – Forecast Maps: today 19/L](#)
7. [Tempo previsto oggi a Baia Terra Nova – Weather Forecast for today at Terra Nova Bay](#)
8. [Mappe di previsione: domani ore 01/L – Forecast Maps: tomorrow 01/L](#)
9. [Mappe di previsione: domani ore 07/L – Forecast Maps: tomorrow 07/L](#)
10. [Mappe di previsione: domani ore 13/L – Forecast Maps: tomorrow 13/L](#)
11. [Mappe di previsione: domani ore 19/L – Forecast Maps: tomorrow 19/L](#)
12. [Tempo previsto domani a Baia Terra Nova – Weather Forecast for tomorrow at Terra Nova Bay](#)
13. [Tendenza per dopodomani a Baia Terra Nova – Weather Tendency for the day after tomorrow at Terra Nova Bay](#)
14. [Valori estremi di ieri – Extreme Values of Yesterday](#)
15. [Andamento delle Temperature durante la Spedizione](#)
16. [Andamento del vento massimo durante la Spedizione](#)
17. [Contatti - Contacts](#)



WEATHER

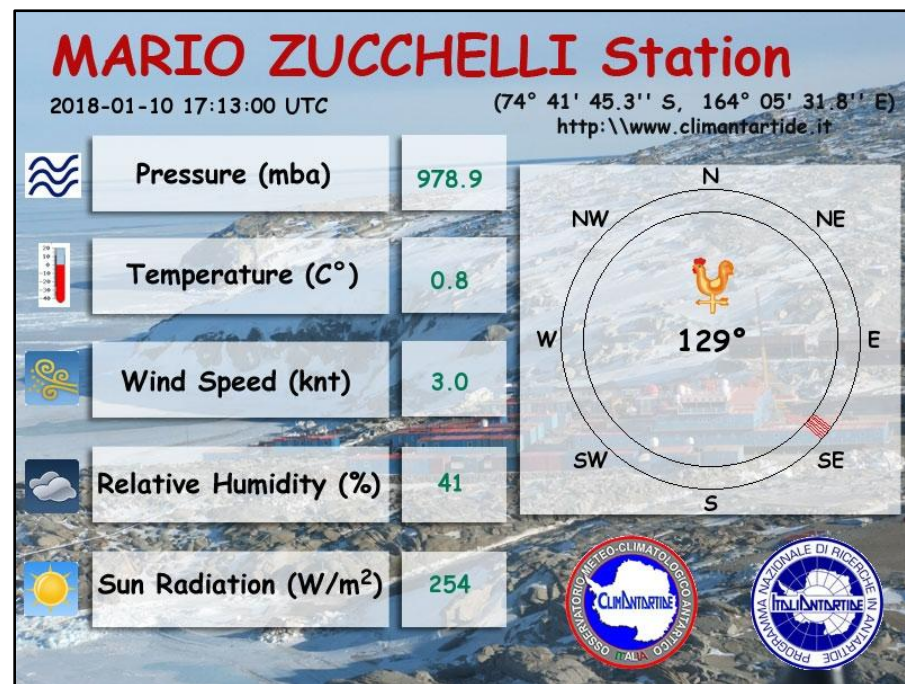
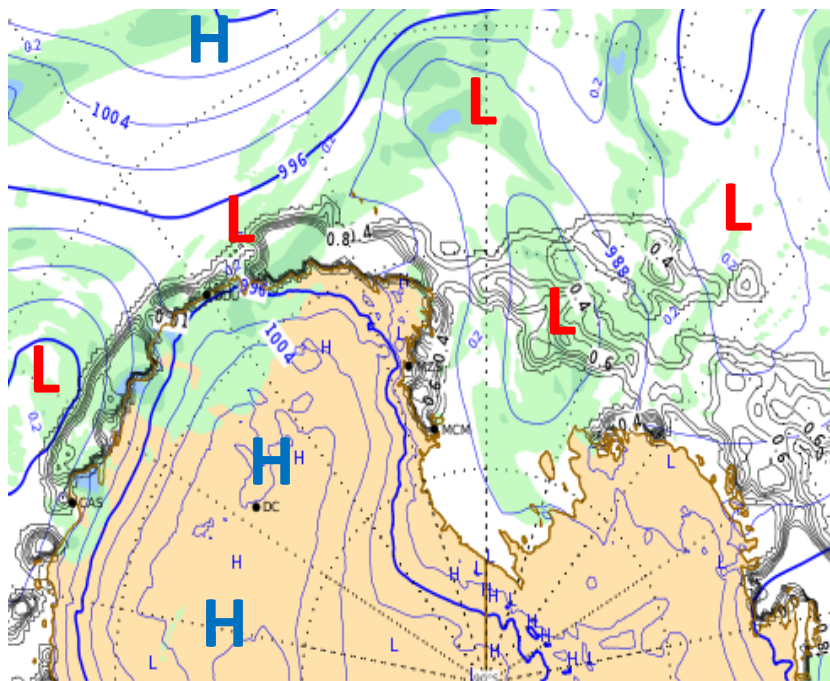
Meteorological observations and forecasts



Thursday 11/01/2018

Sea Level Pressure + Precipitation at 07:00

Latest Report

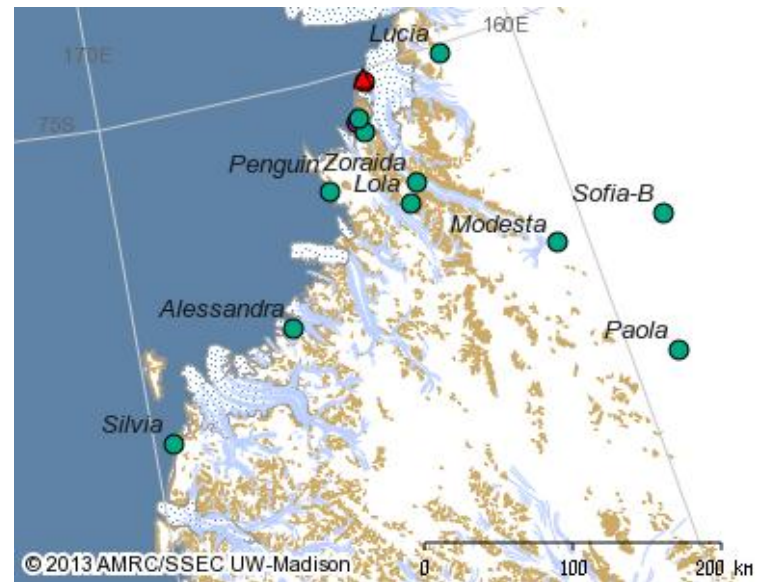
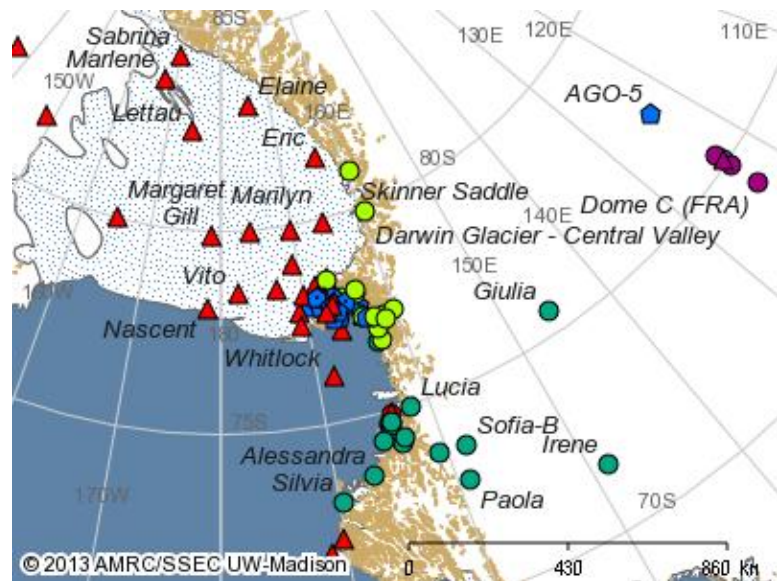


VENTO AREA BOULDER: WSW 27 KT (06:15 loc time recorded)

Automatic Weather Stations (AWS) Updates

AWS	Datetime UTC	Wind Direction [°]	Wind Speed [kts]	Wind Gust [kts]	Temperature [°C]	MAX_Temp [°C]	MIN_Temp [°C]	Humidity [%]	Pressure [hPa]
Alessandra	2018-01-10 16:00	40	3	5	-0.6	0.5	-0.6	54	971.0
Arelis	2018-01-10 16:00	240	17	19	-2.3	-0.7	-2.3	11	970.8
Concordia	2018-01-10 16:00	260	5	7	-28.9	-28.1	-30.3	75	655.8
Eneide	2018-01-10 16:00	250	7	42	0.4	1.0	-0.9	41	979.4
Giulia	2018-01-10 16:00	240	9	11	-27.1	-26.5	-27.1	76	723.6
Lola	2018-01-10 16:00	270	8	24	-9.8	-9.2	-10.7	44	805.9
Modesta	2018-01-10 16:00	280	10	15	-22.8	-21.9	-23.1	75	772.5
Paola	2018-01-07 14:00	80	6	7	-21.6	-21.3	-22.2	82	//
Rita	2018-01-10 16:00	260	32	54	-3.6	-3.1	-4.7	58	956.9
Silvia	2018-01-10 16:00	200	3	27	-5.8	-5.6	-6.4	//	926.4
Sofiab	2018-01-10 16:00	220	32	35	-14.7	-14.2	-15.2	76	812.0
Zoraida	2018-01-10 16:00	310	30	44	-10.4	-9.6	-10.4	94	888.4

N.B. I dati presenti non sono validati e quindi non adatti ad un uso operativo.



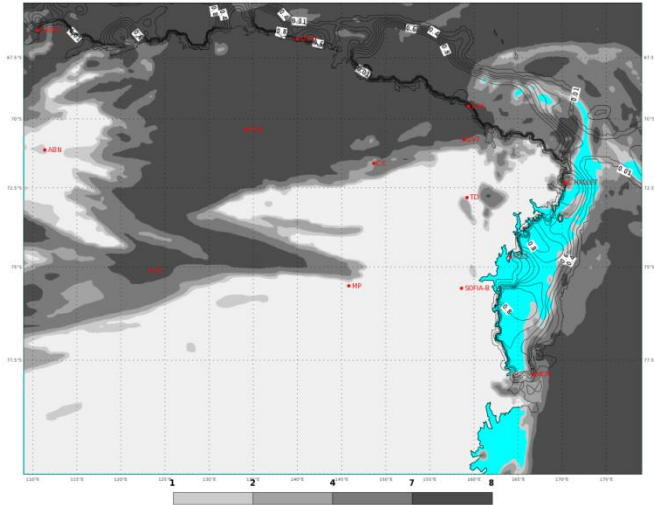
[Indietro all'indice – back to index](#)

PREVISIONI - FORECASTS

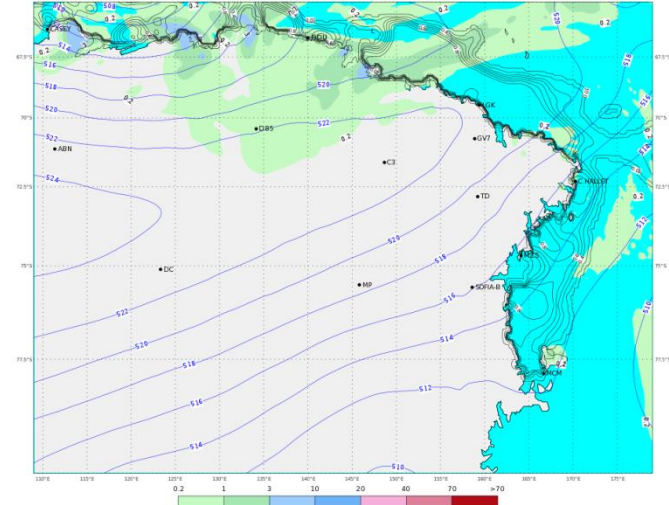
OGGI - ORE 07 LT

TODAY - 07 LT

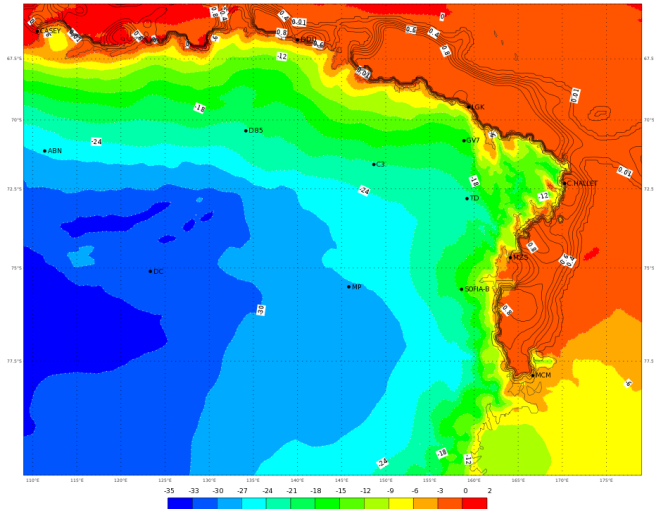
ECMWF 10 Gennaio 2018 00UTC Forecast T+18 VT: Mercoledì 10 Gennaio 2018 18UTC
Terra Vittoria - Total cloud cover (oct)



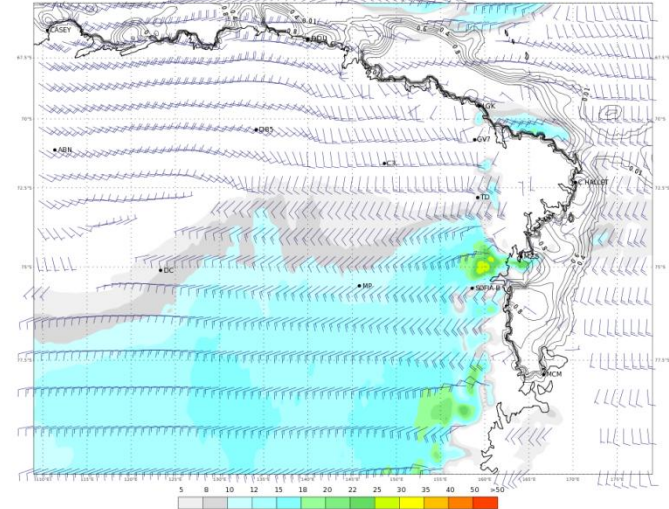
ECMWF 10 Gennaio 2018 00UTC Forecast T+18 VT: Mercoledì 10 Gennaio 2018 18UTC
Terra Vittoria - Geopotential at 500 hPa + 6h accumulated precipitation (mm)



ECMWF 10 Gennaio 2018 00UTC Forecast T+18 VT: Mercoledì 10 Gennaio 2018 18UTC
Terra Vittoria - temperature at 2 m (°C)



ECMWF 10 Gennaio 2018 00UTC Forecast T+18 VT: Mercoledì 10 Gennaio 2018 18UTC
Terra Vittoria - Wind at 10 m (kts)

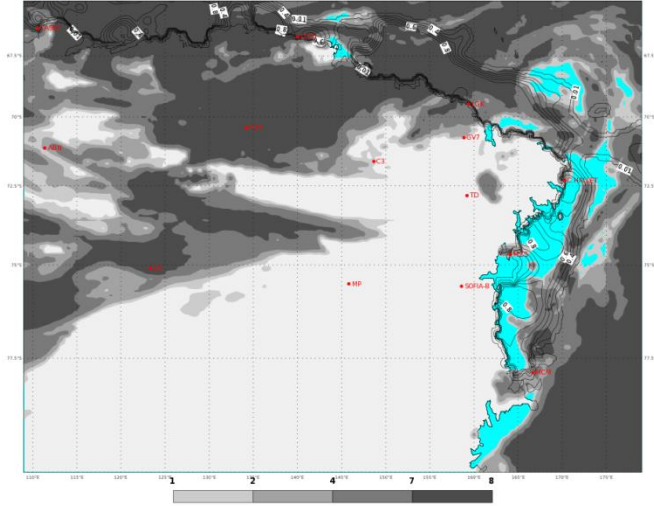


PREVISIONI - FORECASTS

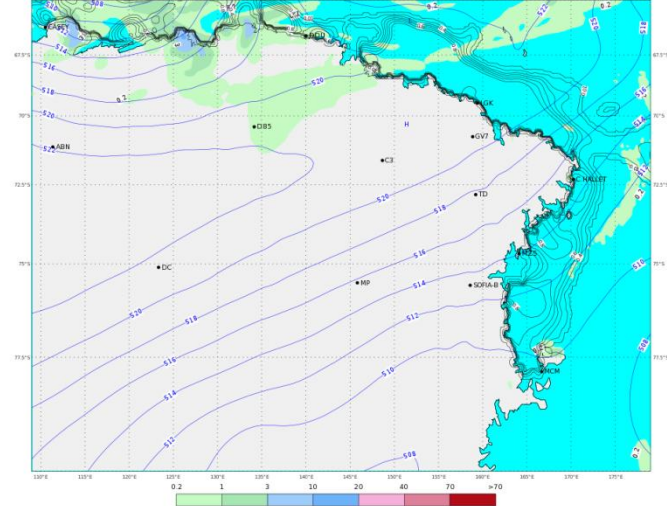
OGGI - ORE 13 LT

TODAY - 13 LT

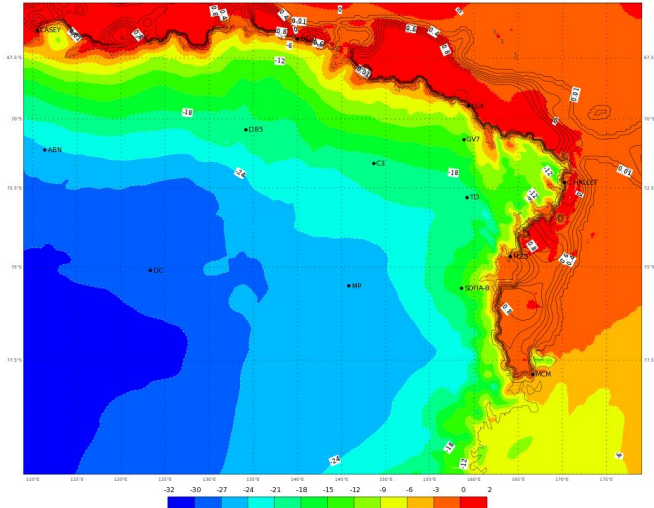
ECMWF 10 Gennaio 2018 00UTC Forecast T+24 VT: Giovedì 11 Gennaio 2018 00UTC
Terra Vittoria - Total cloud cover (oct)



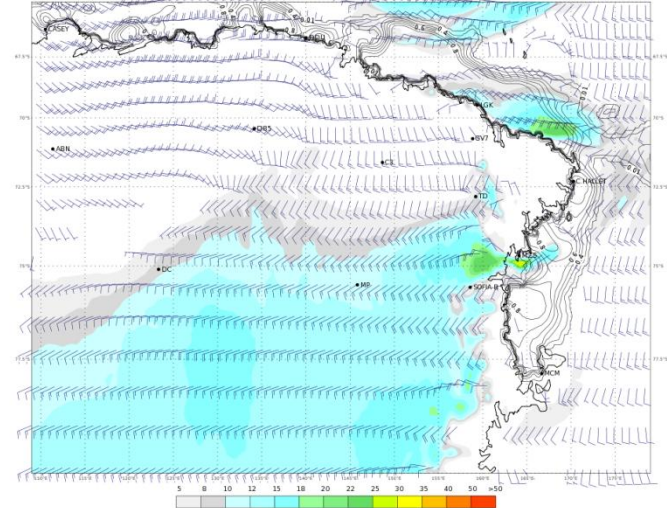
ECMWF 10 Gennaio 2018 00UTC Forecast T+24 VT: Giovedì 11 Gennaio 2018 00UTC
Terra Vittoria - Geopotential at 500 hPa + 6h accumulated precipitation (mm)



ECMWF 10 Gennaio 2018 00UTC Forecast T+24 VT: Giovedì 11 Gennaio 2018 00UTC
Terra Vittoria - Temperature at 2 m (°C)



ECMWF 10 Gennaio 2018 00UTC Forecast T+24 VT: Giovedì 11 Gennaio 2018 00UTC
Terra Vittoria - Wind at 10 m (kts)

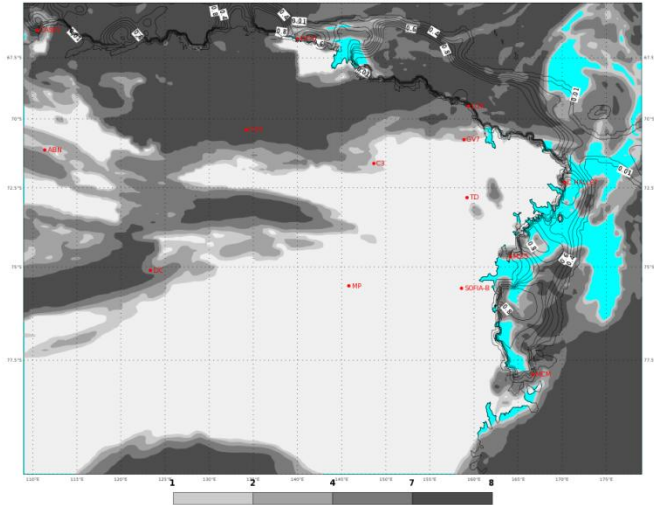


PREVISIONI - FORECASTS

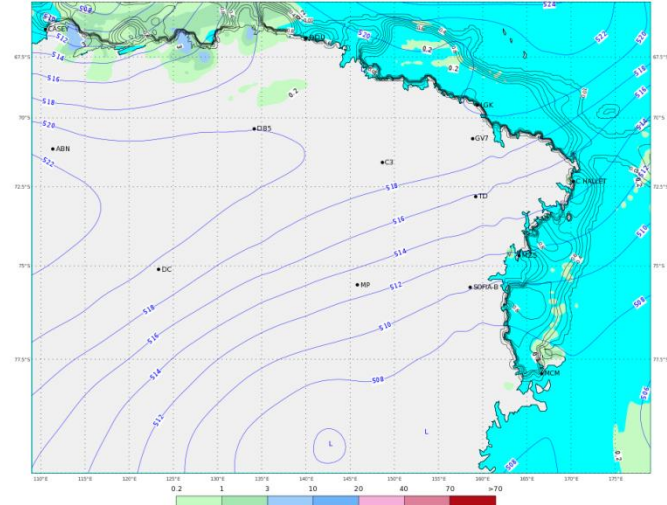
OGGI - ORE 19 LT

TODAY - 19 LT

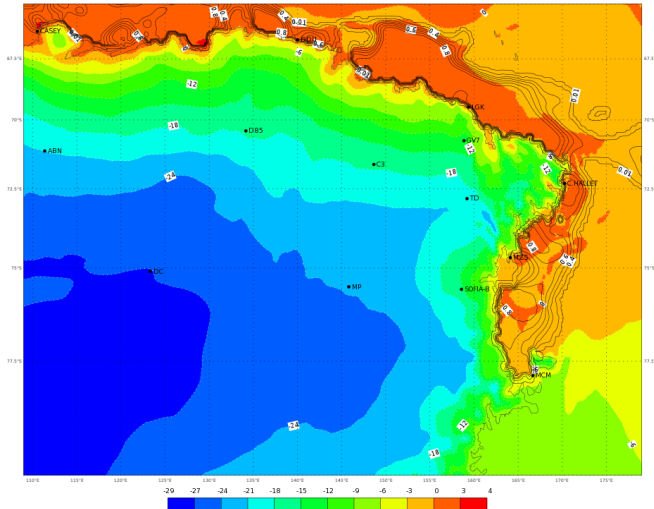
ECMWF 10 Gennaio 2018 00UTC Forecast T+30 VT: Giovedì 11 Gennaio 2018 06UTC
Terra Vittoria - Total cloud cover (oct)



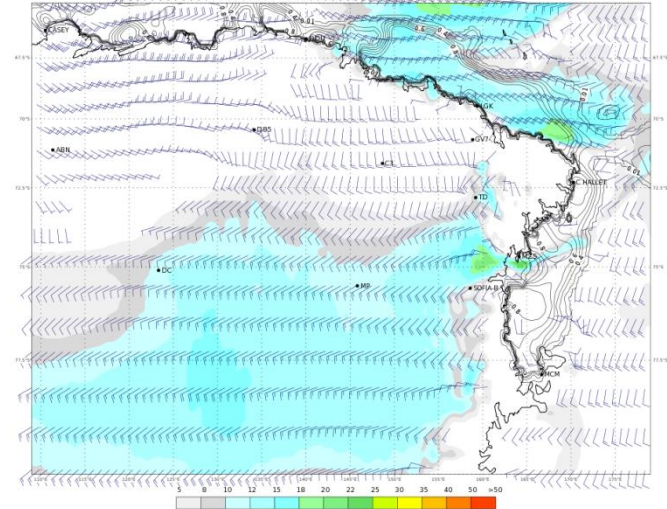
ECMWF 10 Gennaio 2018 00UTC Forecast T+30 VT: Giovedì 11 Gennaio 2018 06UTC
Terra Vittoria - Geopotential at 500 hPa + 6h accumulated precipitation (mm)



ECMWF 10 Gennaio 2018 00UTC Forecast T+30 VT: Giovedì 11 Gennaio 2018 06UTC
Terra Vittoria - Temperature at 2 m (°C)






ECMWF 10 Gennaio 2018 00UTC Forecast T+30 VT: Giovedì 11 Gennaio 2018 06UTC
Terra Vittoria - Wind at 10 m (kts)



WEATHER FORECAST FOR TODAY AT TERRA NOVA BAY

Thursday 11/01/2018

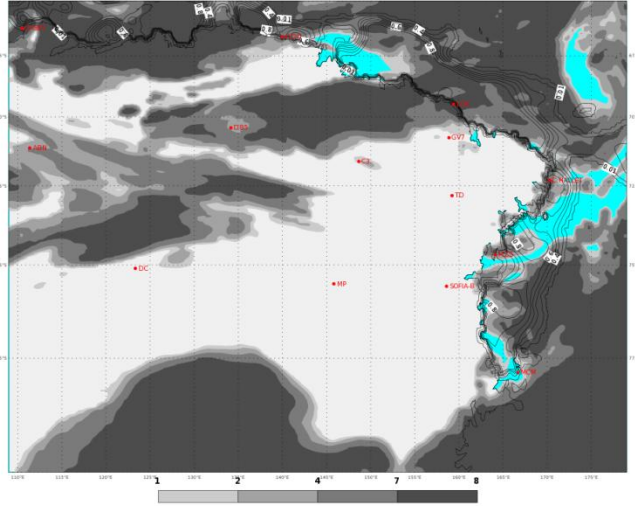
	ORE 07	ORE 13	ORE 19
CIELO			
FENOMENI	DEBOLE CATABATICO	DEBOLE CATABATICO	DEBOLE CATABATICO
VENTO MZS	WSW 15/25 KT	WSW 25/45 KT	WSW 25/35 KT
VENTO BOULDER	WSW 25/40 KT	WSW 30/50 KT	WSW 30/45 KT
TEMPERATURA [°C]	-01/+01 °C	-01/+01 °C	-01/+01 °C
WIND CHILL [°C]	-10/-07 °C	-12/-09 °C	-11/-08 °C
AVVISI	NIL	NIL	NIL

PREVISIONI - FORECASTS

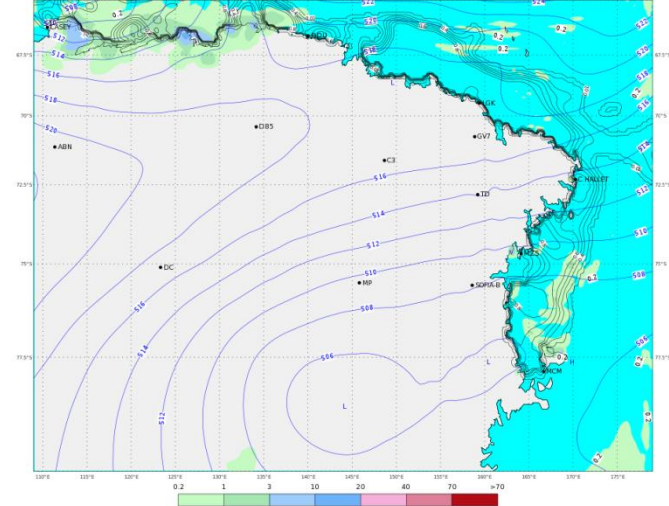
DOMANI - ORE 01 LT

TOMORROW - 01 LT

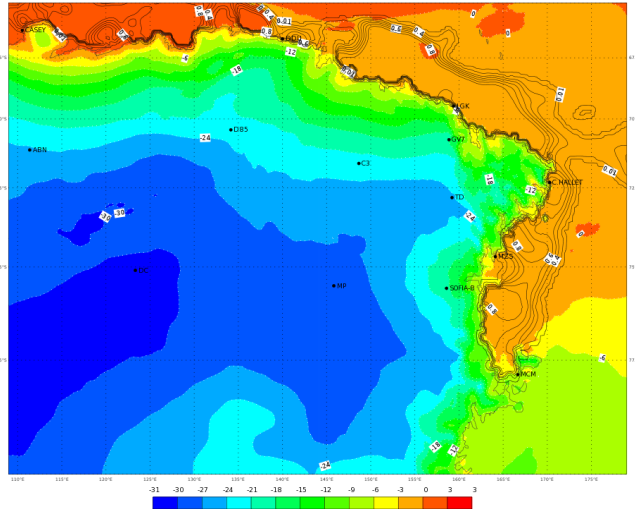
ECMWF 10 Gennaio 2018 00UTC Forecast T+36 VT: Giovedì 11 Gennaio 2018 12UTC
Terra Vittoria - Total cloud cover (oct)



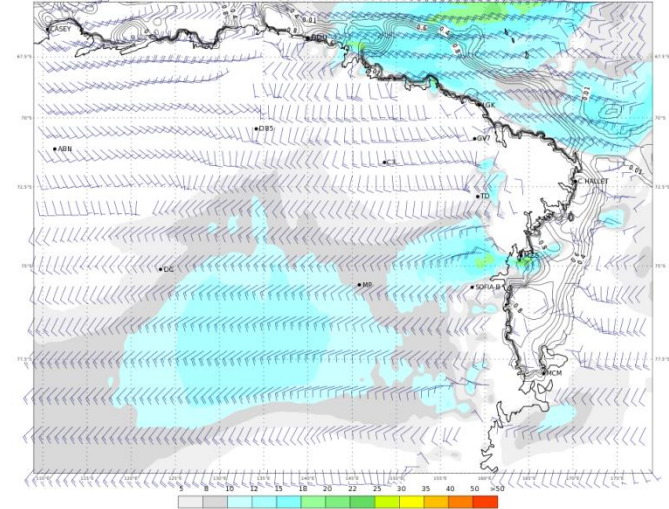
ECMWF 10 Gennaio 2018 00UTC Forecast T+36 VT: Giovedì 11 Gennaio 2018 12UTC
Terra Vittoria - Geopotential at 500 hPa + 6h accumulated precipitation (mm)



ECMWF 10 Gennaio 2018 00UTC Forecast T+36 VT: Giovedì 11 Gennaio 2018 12UTC
Terra Vittoria - temperature at 2 m (°C)



ECMWF 10 Gennaio 2018 00UTC Forecast T+36 VT: Giovedì 11 Gennaio 2018 12UTC
Terra Vittoria - Wind at 10 m (kts)

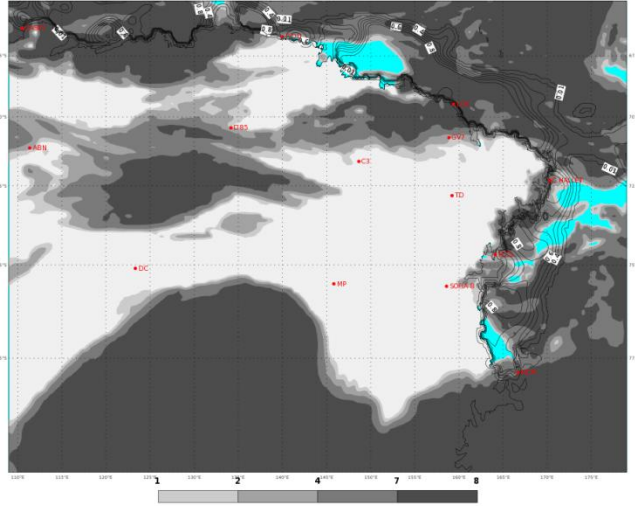


PREVISIONI - FORECASTS

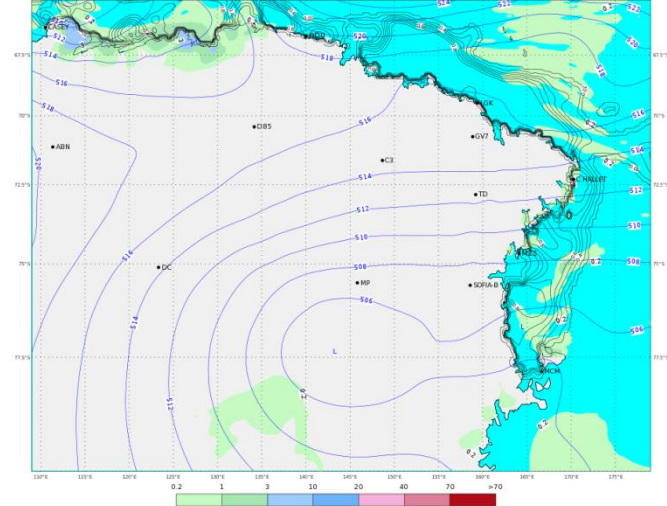
DOMANI - ORE 07 LT

TOMORROW - 07 LT

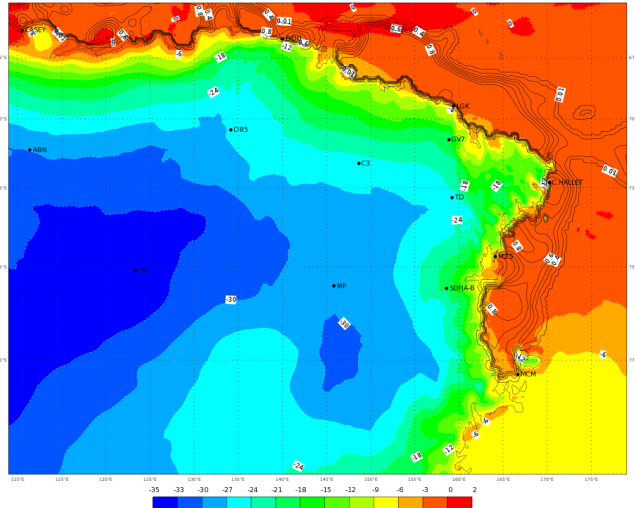
ECMWF 10 Gennaio 2018 00UTC Forecast T+42 VT: Giovedì 11 Gennaio 2018 18UTC
Terra Vittoria - Total cloud cover (oct)



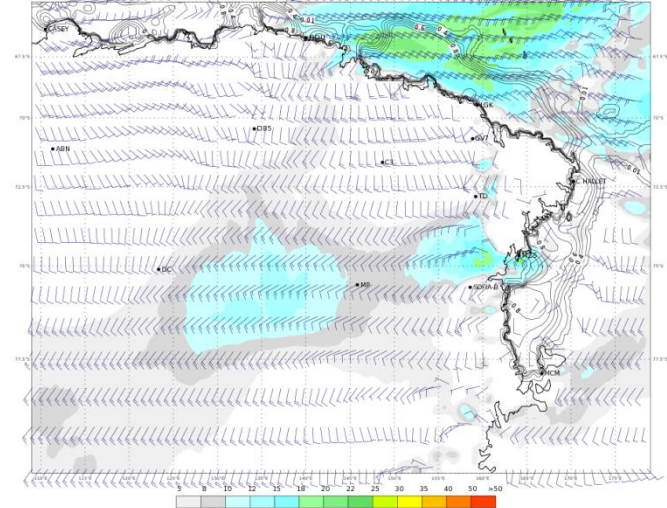
ECMWF 10 Gennaio 2018 00UTC Forecast T+42 VT: Giovedì 11 Gennaio 2018 18UTC
Terra Vittoria - Geopotential at 500 hPa + 6h accumulated precipitation (mm)



ECMWF 10 Gennaio 2018 00UTC Forecast T+42 VT: Giovedì 11 Gennaio 2018 18UTC
Terra Vittoria - Temperature at 2 m (°C)



ECMWF 10 Gennaio 2018 00UTC Forecast T+42 VT: Giovedì 11 Gennaio 2018 18UTC
Terra Vittoria - Wind at 10 m (kts)

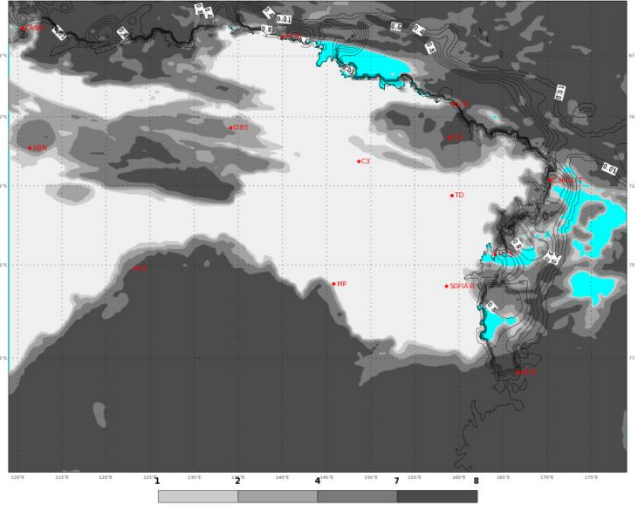


PREVISIONI - FORECASTS

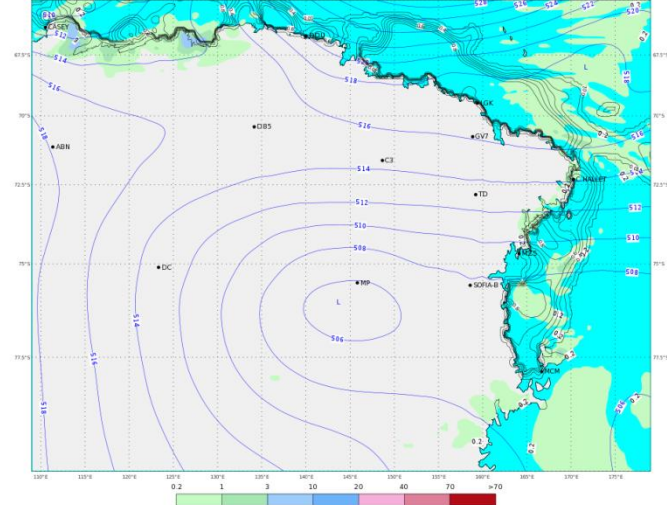
DOMANI - ORE 13 LT

TOMORROW - 13 LT

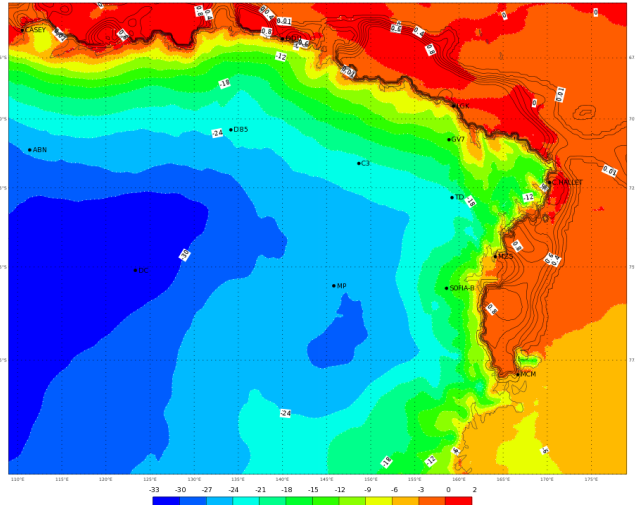
ECMWF 10 Gennaio 2018 00UTC Forecast T+48 VT: Venerdì 12 Gennaio 2018 00UTC
Terra Vittoria - Total cloud cover (oct)



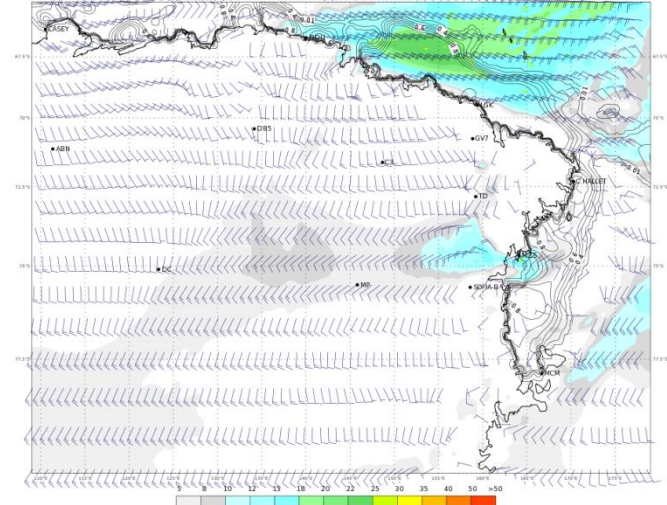
ECMWF 10 Gennaio 2018 00UTC Forecast T+48 VT: Venerdì 12 Gennaio 2018 00UTC
Terra Vittoria - Geopotential at 500 hPa + 6h accumulated precipitation (mm)



ECMWF 10 Gennaio 2018 00UTC Forecast T+48 VT: Venerdì 12 Gennaio 2018 00UTC
Terra Vittoria - Temperature at 2 m (°C)



ECMWF 10 Gennaio 2018 00UTC Forecast T+48 VT: Venerdì 12 Gennaio 2018 00UTC
Terra Vittoria - Wind at 10 m (kts)

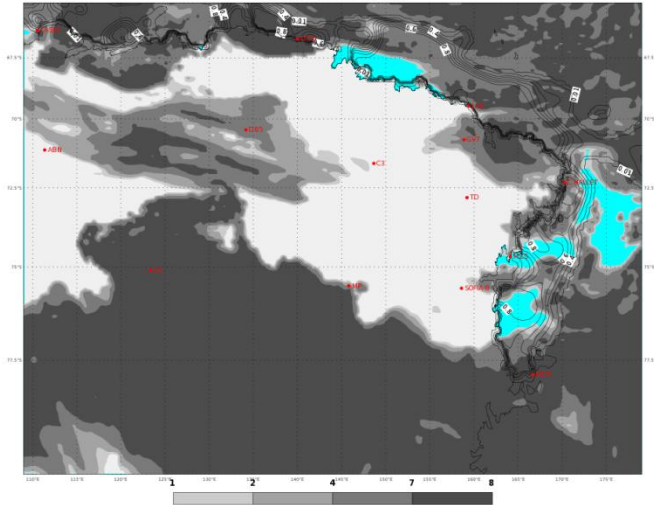


PREVISIONI - FORECASTS

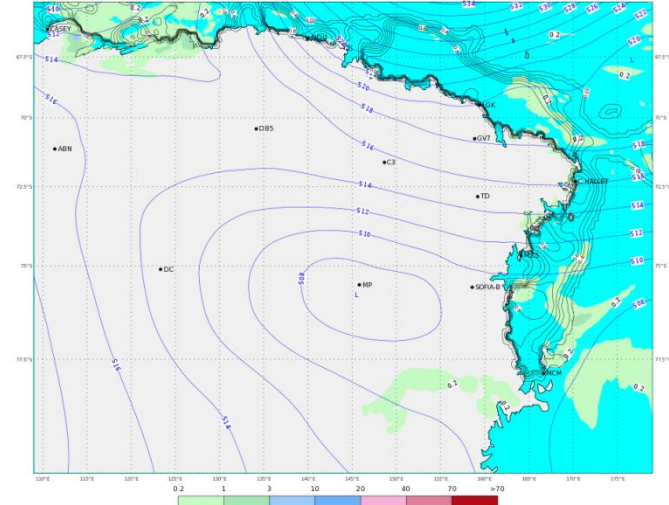
DOMANI - ORE 19 LT

TOMORROW - 19 LT

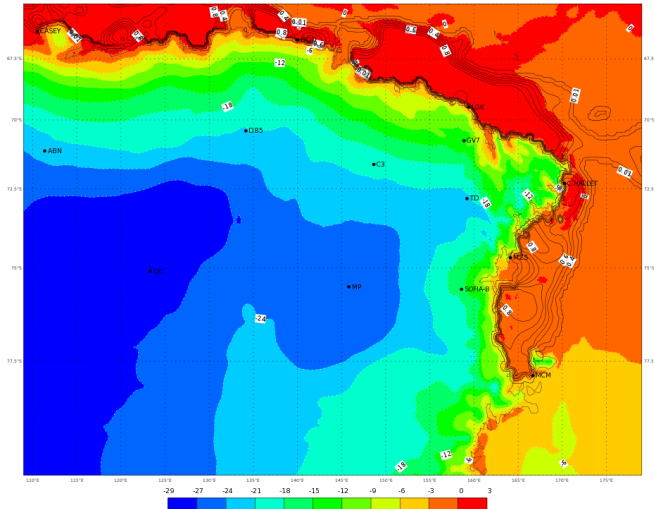
ECMWF 10 Gennaio 2018 00UTC Forecast T+54 VT: Venerdì 12 Gennaio 2018 06UTC
Terra Vittoria - Total cloud cover (oct)



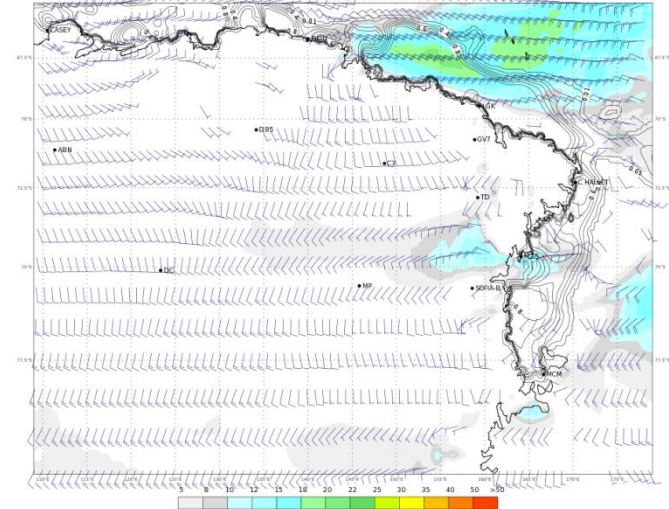
ECMWF 10 Gennaio 2018 00UTC Forecast T+54 VT: Venerdì 12 Gennaio 2018 06UTC
Terra Vittoria - Geopotential at 500 hPa + 6h accumulated precipitation (mm)



ECMWF 10 Gennaio 2018 00UTC Forecast T+54 VT: Venerdì 12 Gennaio 2018 06UTC
Terra Vittoria - Temperature at 2 m (°C)






ECMWF 10 Gennaio 2018 00UTC Forecast T+54 VT: Venerdì 12 Gennaio 2018 06UTC
Terra Vittoria - Wind at 10 m (kts)



WEATHER FORECAST FOR TOMORROW AT TERRA NOVA BAY

Friday 12/01/2018



	ORE 07	ORE 13	ORE 19
CIELO			
FENOMENI	DEBOLE CATABATICO	DEBOLE CATABATICO	DEBOLE CATABATICO
VENTO MZS	WNW 25/40 KT	WNW 25/35 KT	WNW 20/30 KT
VENTO BOULDER	WNW 30/50 KT	WNW 30/45 KT	WNW 25/35 KT
TEMPERATURA [°C]	-04/-02 °C	-03/-01 °C	-02/00 °C
WIND CHILL [°C]	-15/-12 °C	-13/-10 °C	-11/-08 °C
AVVISI	NIL	NIL	NIL

http://mzs-pdc.mzs.pnra.it/meteo/bollettino_meteo.pdf

[Indietro all'indice – back to index](#)

WEATHER TENDENCY AT TERRA NOVA BAY

Saturday 13/01/2018

	MATTINO	POMERIGGIO
CIELO		
FENOMENI	DEBOLE CATABATICO	NIL
VENTO MZS	WNW 25/35 KT	WNW 15/25 KT
VENTO BOULDER	WNW 30/40 KT	WNW 20/30 KT
TEMPERATURA [°C]	-04/-02 °C	-01/+01 °C
WIND CHILL [°C]	-15/-12 °C	-09/-06 °C
AVVISI	NIL	NIL



Extreme Values of Yesterday



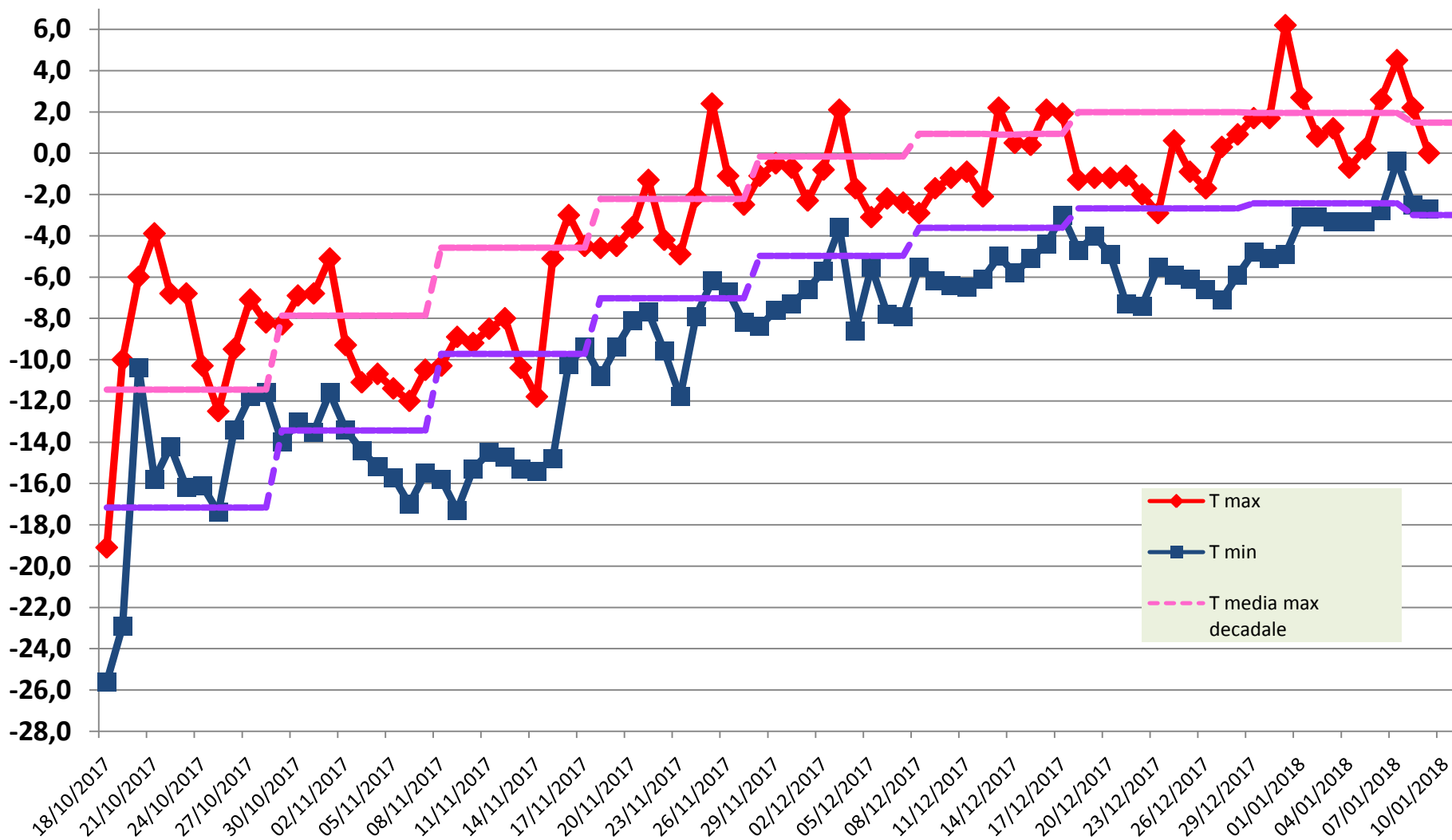
10/01/2018 UTC time (13:00 09/01 - 13:00 10/01)		
MAX temperature	(ore 16:53/L)	0.0°C
MIN temperature	(ore 01:02/L)	-2.7 °C
MAX humidity	(ore 00:48/L)	100 %
MIN humidity	(ore 21:52/L)	90 %
MAX wind direction/speed	(ore 22:29/L)	214/24.7 KT

Remark: *the reported values are referred to the previous day in terms of Universal Time and not in local time (UTC+13).*



Temperature measured during the XXXIII Expedition

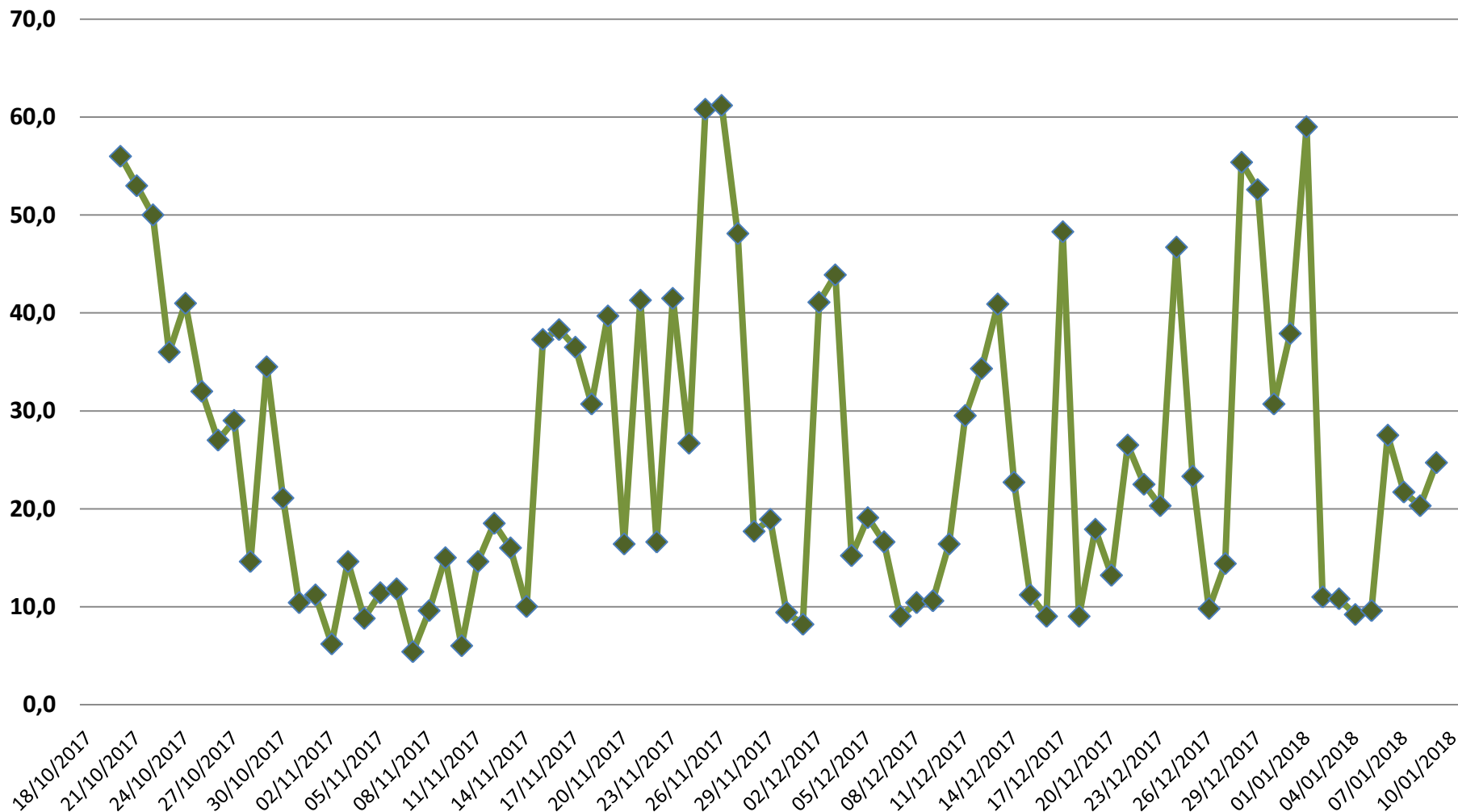
ENEIDE weather station (MZS) - Antarctic Climatology Observatory





MAX wind [kt] measured during the XXXIII Expedition

ENEIDE weather station (MZS) - Antarctic Climatology Observatory



**Per ulteriori informazioni contattare
l'Ufficio Meteorologico di MZS
int. 510**

**For further information please contact
MZS Met Office
ext. 510**

AVVERTENZA/WARNING

*Le presenti informazioni NON sono destinate alla pianificazione di volo e/o pre-volo
The informations here presented are NOT intended for flight planning and/or pre-flight*

[Indietro all'indice – back to index](#)