



# WEATHER

*Meteorological observations and forecasts*

**Sunday 14/01/2018**

*MET Office - "Mario Zucchelli" Base - Terranova Bay*

Ten. Col. Luigi Verzelletti  
Cap. Francesco Mariella



Agenzia nazionale per le nuove tecnologie,  
l'energia e lo sviluppo economico sostenibile

*Information NOT intended for flight planning and pre-flight*



# Indice dei contenuti

# Table of Contents

*Puoi saltare direttamente sull'argomento di interesse cliccandoci sopra*

*Jump directly to the issue of your interest just clicking on it*

1. [Situazione – Situation](#)
2. [Ultime Misure delle Stazioni Meteo Automatiche - Last Measurements from Automatic Weather Stations](#)
3. [Dati attuali a MZS – Current data at MZS \(ENEIDE – ‘Campo Meteo’\)](#)
4. [Mappe di previsione: oggi ore 07/L – Forecast Maps: today 07/L](#)
5. [Mappe di previsione: oggi ore 13/L – Forecast Maps: today 13/L](#)
6. [Mappe di previsione: oggi ore 19/L – Forecast Maps: today 19/L](#)
7. [Tempo previsto oggi a Baia Terra Nova – Weather Forecast for today at Terra Nova Bay](#)
8. [Mappe di previsione: domani ore 01/L – Forecast Maps: tomorrow 01/L](#)
9. [Mappe di previsione: domani ore 07/L – Forecast Maps: tomorrow 07/L](#)
10. [Mappe di previsione: domani ore 13/L – Forecast Maps: tomorrow 13/L](#)
11. [Mappe di previsione: domani ore 19/L – Forecast Maps: tomorrow 19/L](#)
12. [Tempo previsto domani a Baia Terra Nova – Weather Forecast for tomorrow at Terra Nova Bay](#)
13. [Tendenza per dopodomani a Baia Terra Nova – Weather Tendency for the day after tomorrow at Terra Nova Bay](#)
14. [Valori estremi di ieri – Extreme Values of Yesterday](#)
15. [Andamento delle Temperature durante la Spedizione](#)
16. [Andamento del vento massimo durante la Spedizione](#)
17. [Contatti - Contacts](#)



# WEATHER

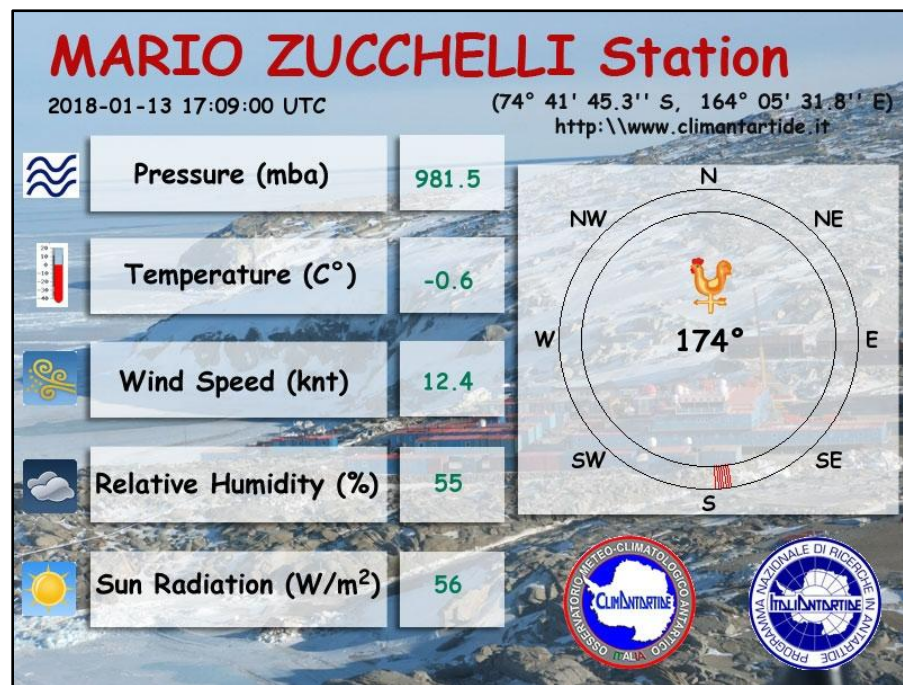
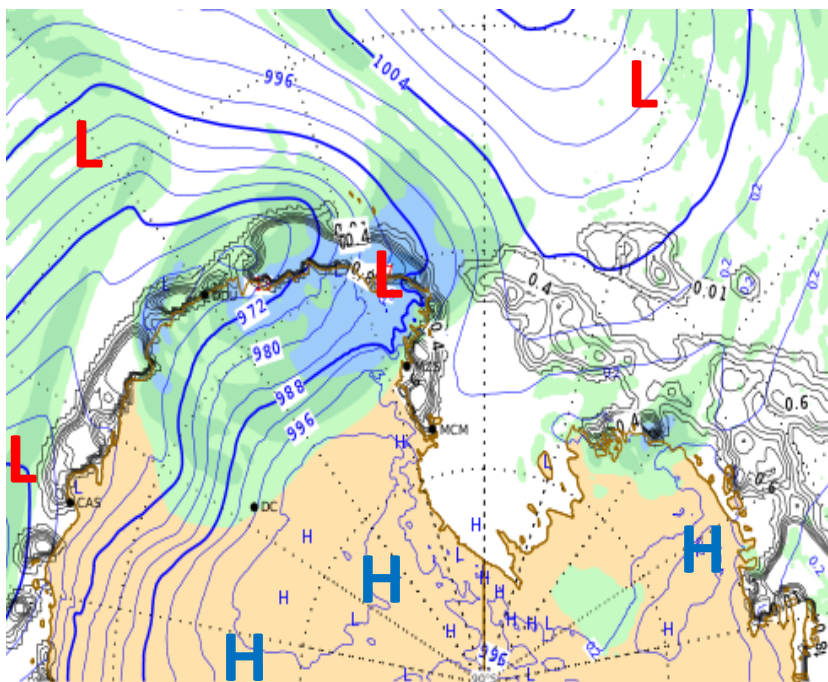
Meteorological observations and forecasts



## Sunday 14/01/2018

Sea Level Pressure + Precipitation at 07:00

Latest Report

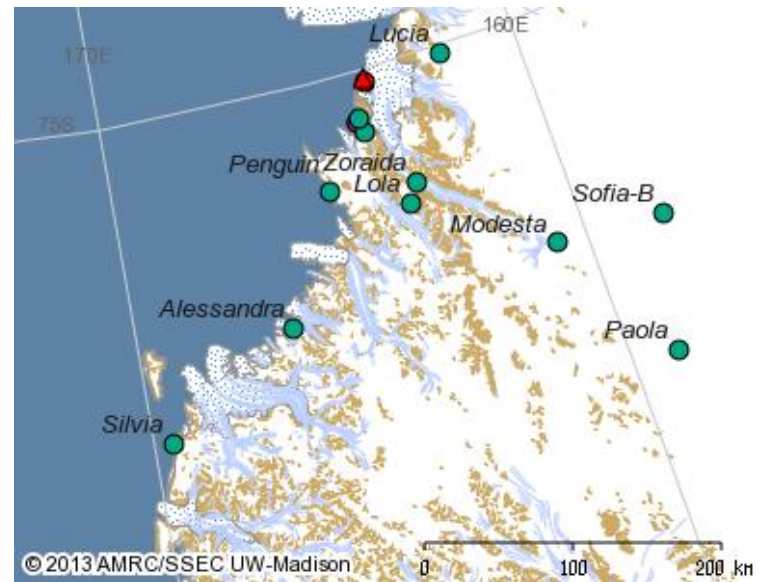
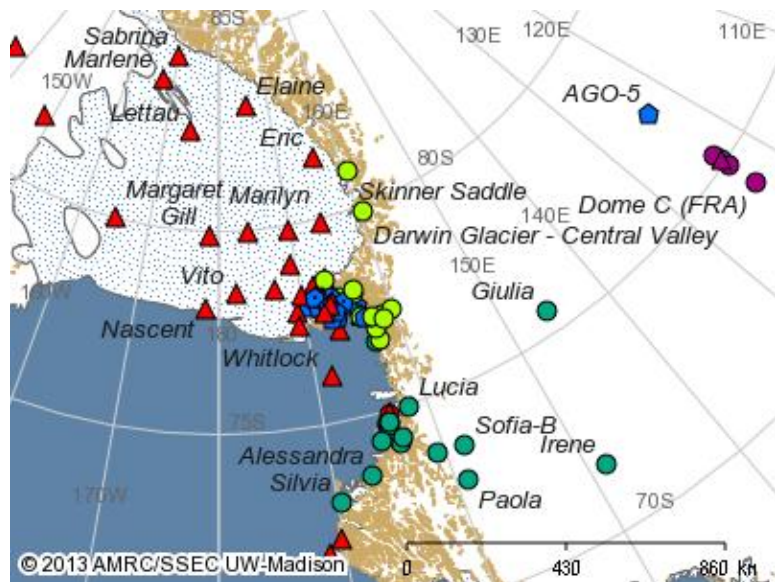


**VENTO AREA BOULDER: SSW 12 KT (06:15 loc time recorded)**

# Automatic Weather Stations (AWS) Updates

AWS	Datetime UTC	Wind Direction [°]	Wind Speed [kts]	Wind Gust [kts]	Temperature [°C]	MAX_Temp [°C]	MIN_Temp [°C]	Humidity [%]	Pressure [hPa]
Alessandra	2018-01-13 16:00	240	3	8	-5.3	-4.5	-5.6	92	973.7
Arelis	2018-01-13 16:00	40	1	3	-0.5	1.5	-0.5	11	976.8
Concordia	2018-01-13 16:00	100	18	21	-29.9	-29.6	-30.6	73	643.5
Eneide	2018-01-13 16:00	240	1	8	-0.8	-0.5	-1.6	69	982.3
Giulia	2018-01-13 16:00	120	13	18	-23.1	-22.9	-23.1	77	717.5
Lola	2018-01-13 16:00	60	12	15	-12.5	-11.5	-12.5	50	808.0
Modesta	2018-01-13 16:00	120	6	10	-15.6	-15.6	-15.9	86	768.5
Paola	2018-01-07 14:00	80	6	7	-21.6	-21.3	-22.2	82	//
Rita	2018-01-13 16:00	160	7	7	-2.9	-2.5	-3.1	84	961.4
Silvia	2018-01-13 16:00	10	22	25	//	-5.8	//	//	929.8
Sofiab	2018-01-13 16:00	110	12	17	-12.5	-12.4	-14.5	68	815.2
Zoraida	2018-01-13 16:00	140	14	23	-6.5	-5.4	-6.6	60	890.4

N.B. I dati presenti non sono validati e quindi non adatti ad un uso operativo.



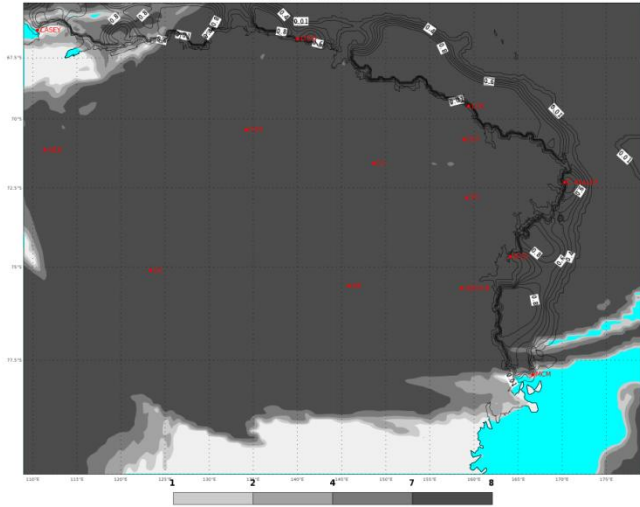
[Indietro all'indice – back to index](#)

# PREVISIONI - FORECASTS

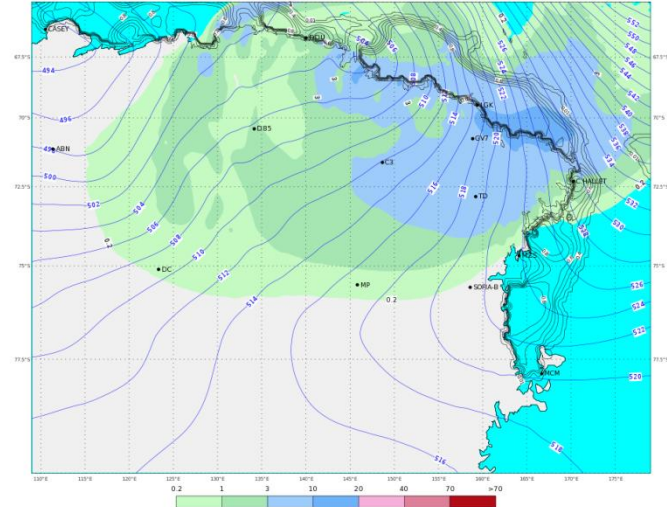
OGGI - ORE 07 LT

TODAY - 07 LT

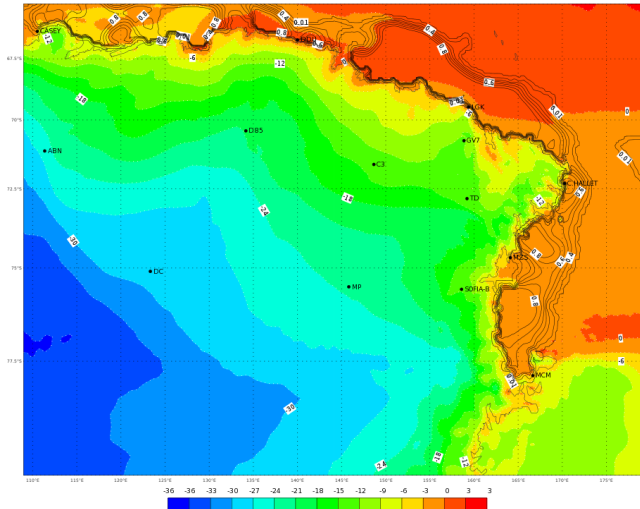
ECMWF 13 Gennaio 2018 00UTC Forecast T+18 VT: Sabato 13 Gennaio 2018 18UTC  
Terra Vittoria - Total cloud cover (oct)



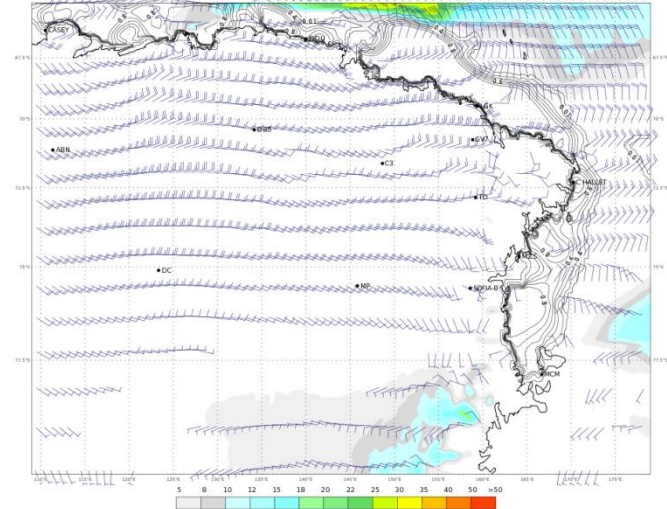
ECMWF 13 Gennaio 2018 00UTC Forecast T+18 VT: Sabato 13 Gennaio 2018 18UTC  
Terra Vittoria - Geopotential at 500 hPa + 6h accumulated precipitation (mm)



ECMWF 13 Gennaio 2018 00UTC Forecast T+18 VT: Sabato 13 Gennaio 2018 18UTC  
Terra Vittoria - temperature at 2 m (°C)



ECMWF 13 Gennaio 2018 00UTC Forecast T+18 VT: Sabato 13 Gennaio 2018 18UTC  
Terra Vittoria - Wind at 10 m (kts)

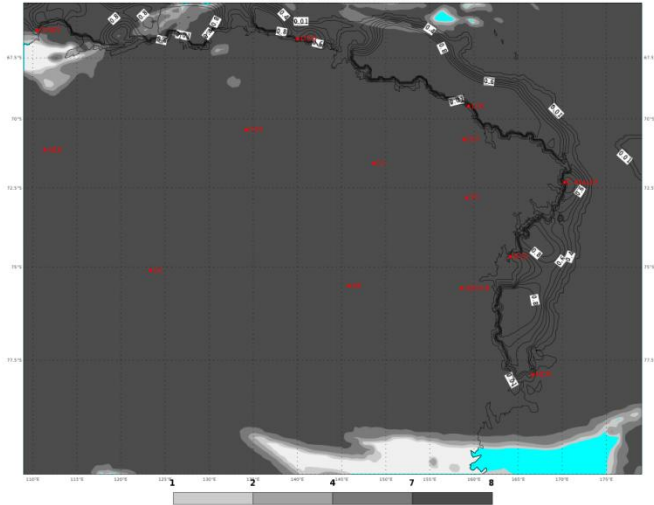


# PREVISIONI - FORECASTS

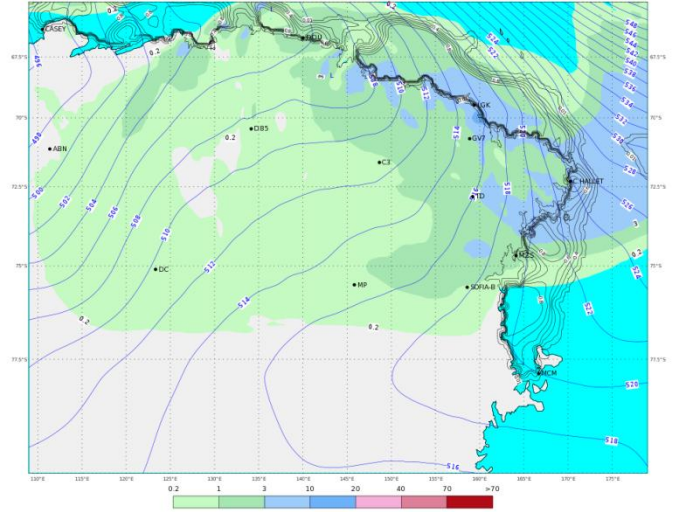
## OGGI - ORE 13 LT

## TODAY - 13 LT

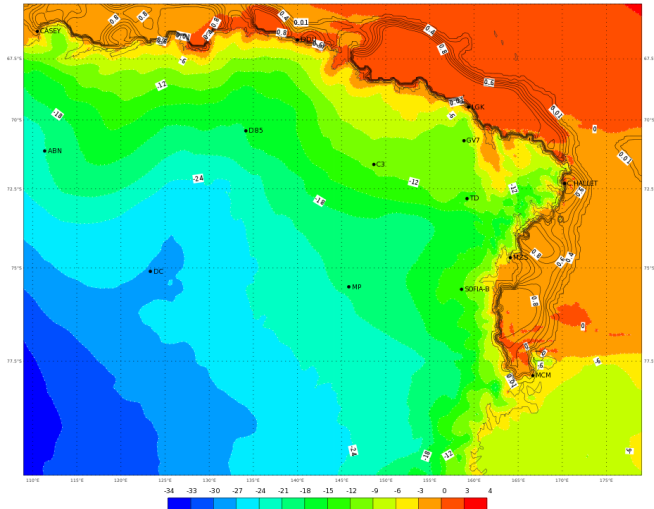
ECMWF 13 Gennaio 2018 00UTC Forecast T+24 VT: Domenica 14 Gennaio 2018 00UTC  
Terra Vittoria - Total cloud cover (oct)



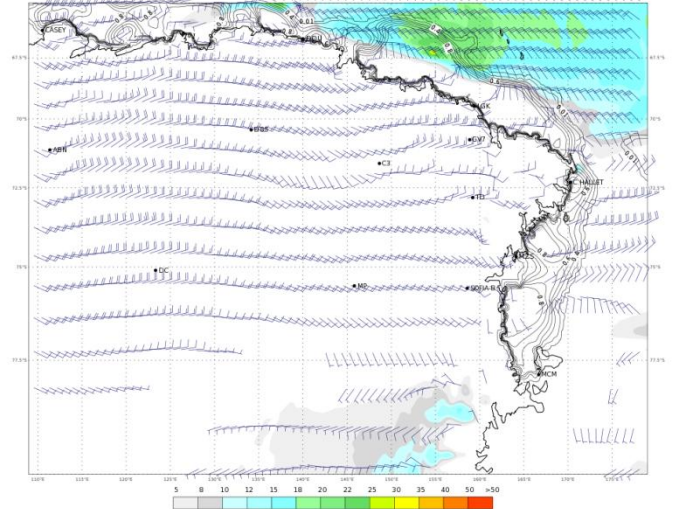
ECMWF 13 Gennaio 2018 00UTC Forecast T+24 VT: Domenica 14 Gennaio 2018 00UTC  
Terra Vittoria - Geopotential at 500 hPa + 6h accumulated precipitation (mm)



ECMWF 13 Gennaio 2018 00UTC Forecast T+24 VT: Domenica 14 Gennaio 2018 00UTC  
Terra Vittoria - Temperature at 2 m (°C)



ECMWF 13 Gennaio 2018 00UTC Forecast T+24 VT: Domenica 14 Gennaio 2018 00UTC  
Terra Vittoria - Wind at 10 m (kts)

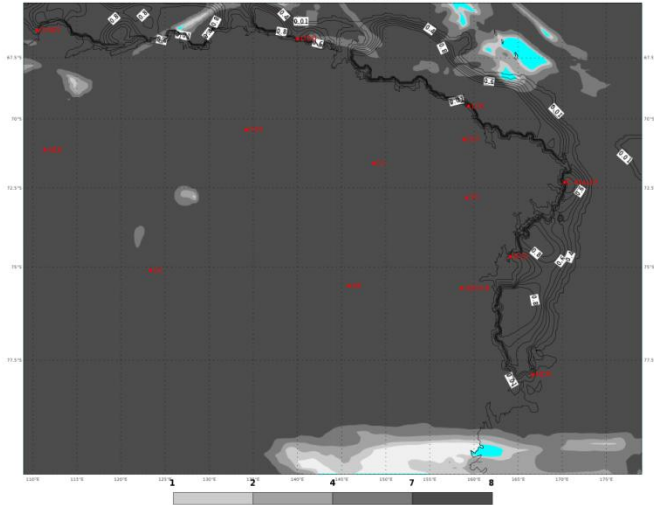


# PREVISIONI - FORECASTS

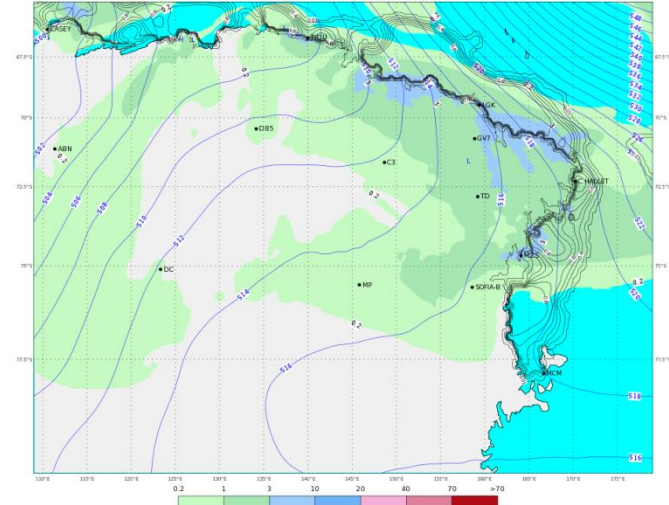
OGGI - ORE 19 LT

TODAY - 19 LT

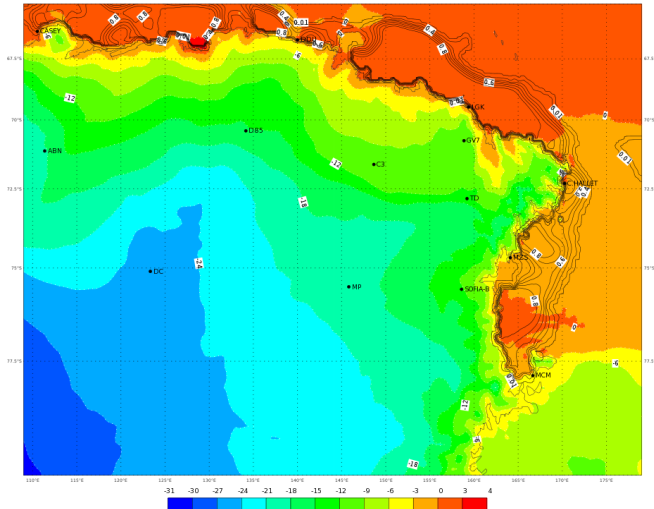
ECMWF 13 Gennaio 2018 00UTC Forecast T+30 VT: Domenica 14 Gennaio 2018 06UTC  
Terra Vittoria - Total cloud cover (oct)



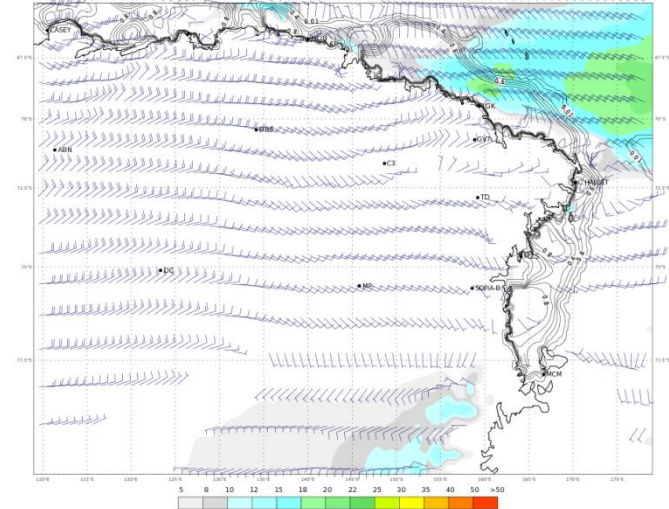
ECMWF 13 Gennaio 2018 00UTC Forecast T+30 VT: Domenica 14 Gennaio 2018 06UTC  
Terra Vittoria - Geopotential at 500 hPa + 6h accumulated precipitation (mm)



ECMWF 13 Gennaio 2018 00UTC Forecast T+30 VT: Domenica 14 Gennaio 2018 06UTC  
Terra Vittoria - Temperature at 2 m (°C)






ECMWF 13 Gennaio 2018 00UTC Forecast T+30 VT: Domenica 14 Gennaio 2018 06UTC  
Terra Vittoria - Wind at 10 m (kts)



# WEATHER FORECAST FOR TODAY AT TERRA NOVA BAY

## Sunday 14/01/2018

	ORE 07	ORE 13	ORE 19
CIELO			
FENOMENI	POSSIBILE NEVISCHIO IN MATTINATA	NEVE DEBOLE A TRATTI MODERATA	NEVE DEBOLE
VENTO MZS	SSW 10/15 KT	SSW 10/15 KT	ESE 07 KT
VENTO BOULDER	WSW 15/20 KT	WSW 15/20 KT	ESE 10 KT
TEMPERATURA [°C]	-03/-01 °C	-04/-02 °C	-03/-01 °C
WIND CHILL [°C]	-10/-07 °C	-11/-09 °C	-08/-05 °C
AVVISI	NIL	NIL	NIL

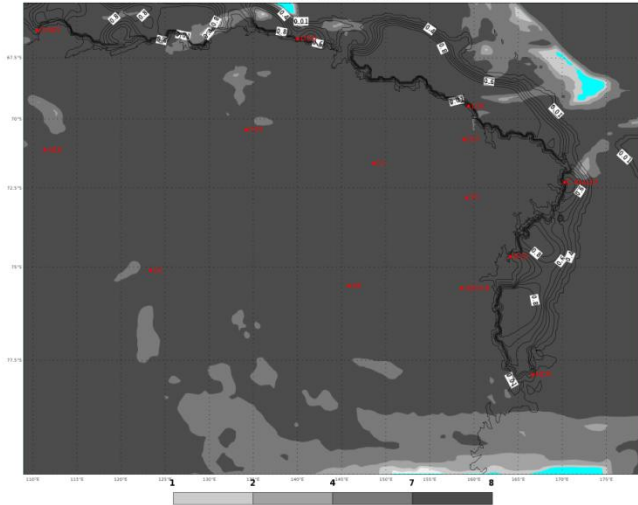


# PREVISIONI - FORECASTS

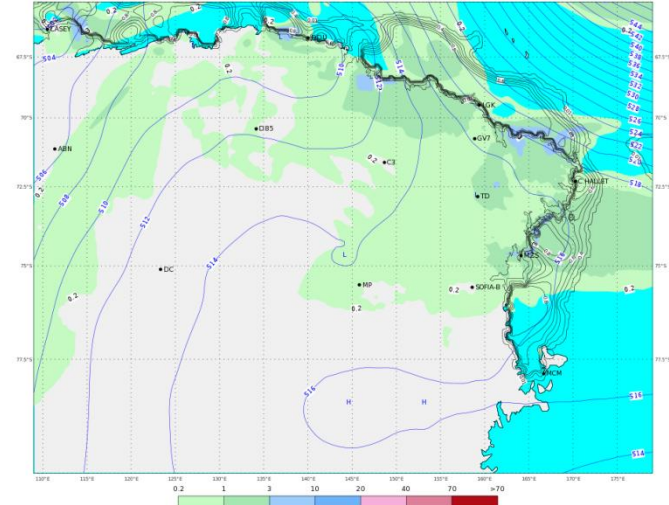
## DOMANI - ORE 01 LT

## TOMORROW - 01 LT

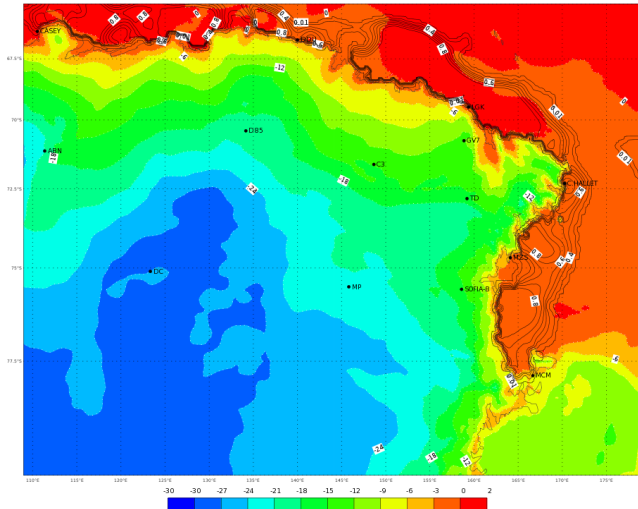
ECMWF 13 Gennaio 2018 00UTC Forecast T+36 VT: Domenica 14 Gennaio 2018 12UTC  
Terra Vittoria - Total cloud cover (oct)



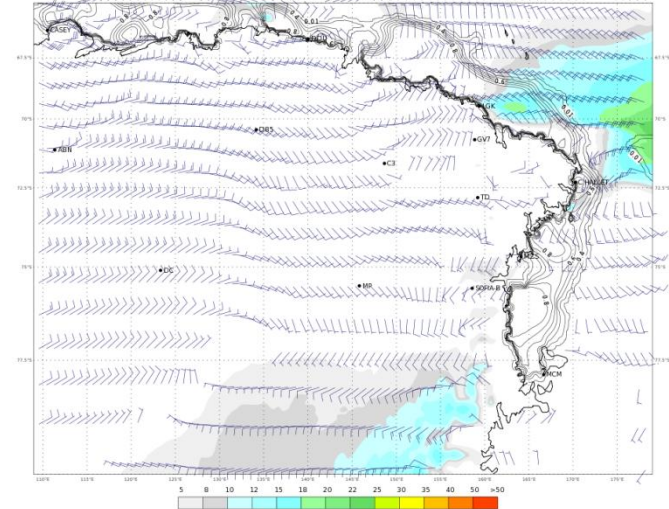
ECMWF 13 Gennaio 2018 00UTC Forecast T+36 VT: Domenica 14 Gennaio 2018 12UTC  
Terra Vittoria - Geopotential at 500 hPa + 6h accumulated precipitation (mm)



ECMWF 13 Gennaio 2018 00UTC Forecast T+36 VT: Domenica 14 Gennaio 2018 12UTC  
Terra Vittoria - Temperature at 2 m (°C)



ECMWF 13 Gennaio 2018 00UTC Forecast T+36 VT: Domenica 14 Gennaio 2018 12UTC  
Terra Vittoria - Wind at 10 m (kts)

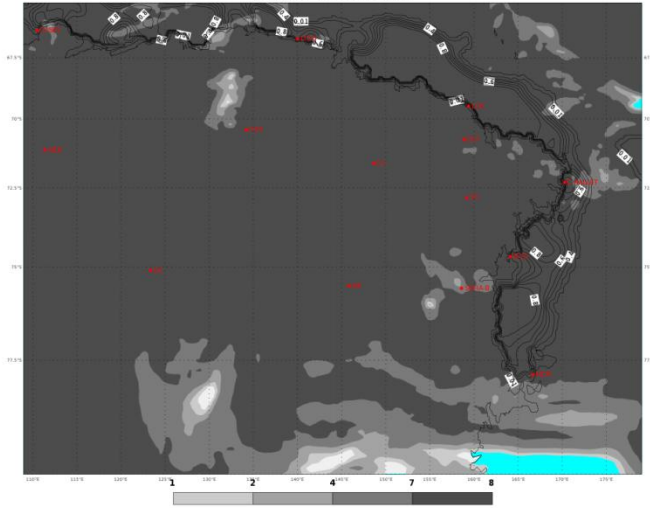


# PREVISIONI - FORECASTS

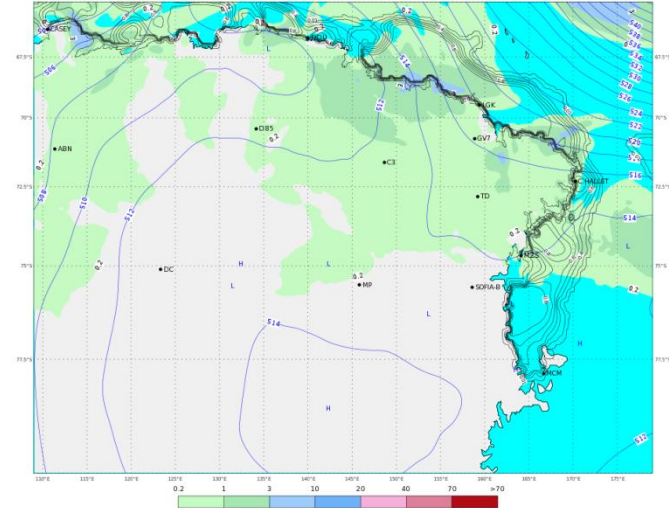
## DOMANI - ORE 07 LT

## TOMORROW - 07 LT

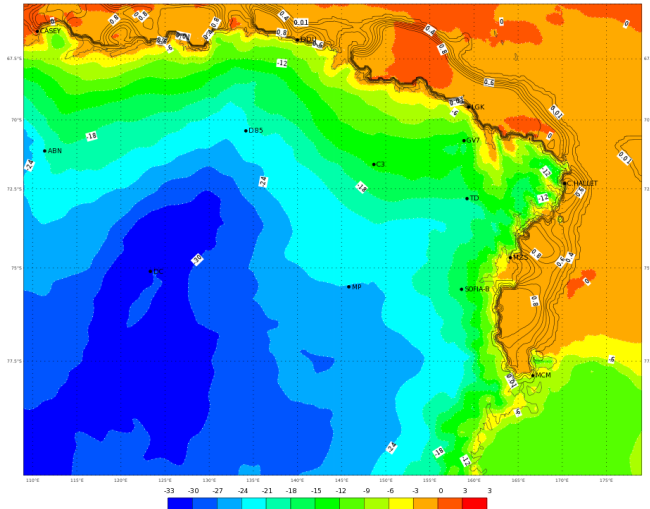
ECMWF 13 Gennaio 2018 00UTC Forecast T+42 VT: Domenica 14 Gennaio 2018 18UTC  
Terra Vittoria - Total cloud cover (oct)



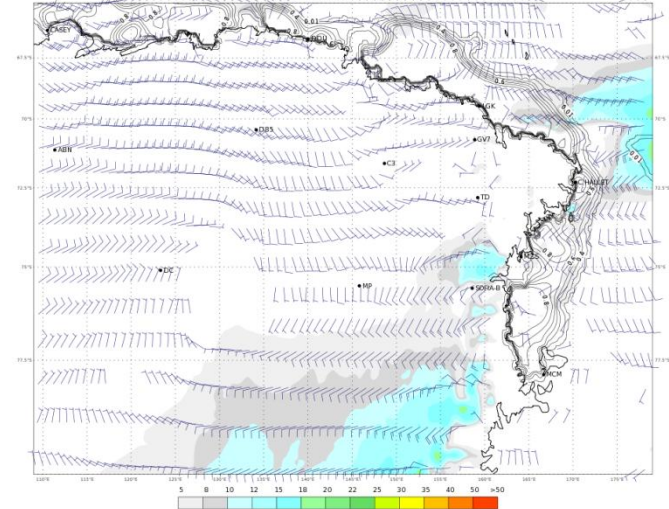
ECMWF 13 Gennaio 2018 00UTC Forecast T+42 VT: Domenica 14 Gennaio 2018 18UTC  
Terra Vittoria - Geopotential at 500 hPa + 6h accumulated precipitation (mm)



ECMWF 13 Gennaio 2018 00UTC Forecast T+42 VT: Domenica 14 Gennaio 2018 18UTC  
Terra Vittoria - temperature at 2 m (°C)



ECMWF 13 Gennaio 2018 00UTC Forecast T+42 VT: Domenica 14 Gennaio 2018 18UTC  
Terra Vittoria - Wind at 10 m (kts)

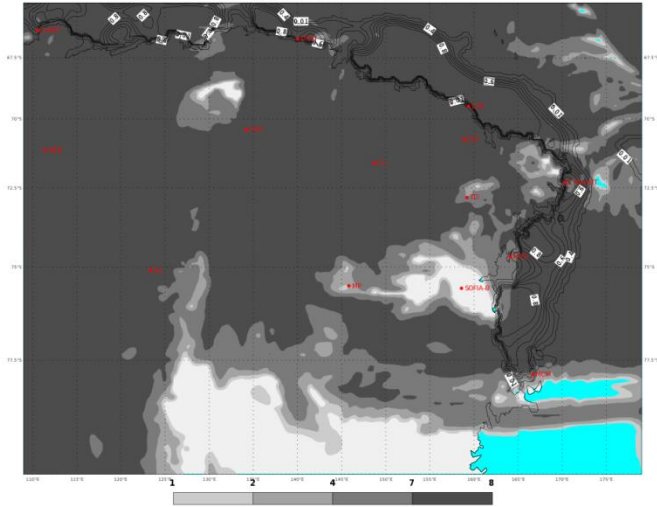


# PREVISIONI - FORECASTS

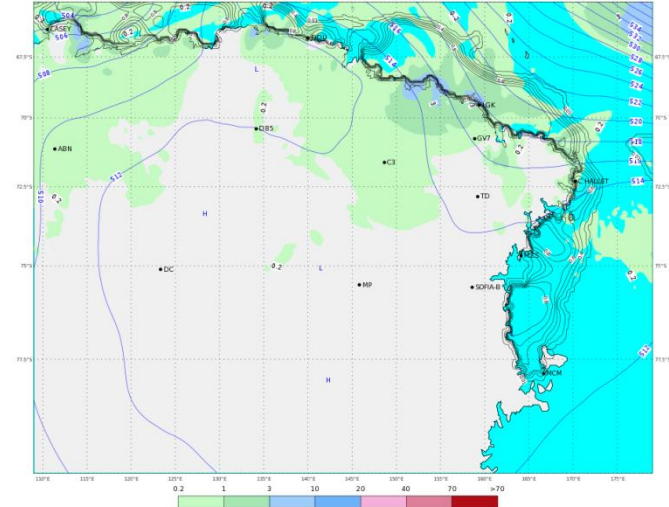
## DOMANI - ORE 13 LT

## TOMORROW - 13 LT

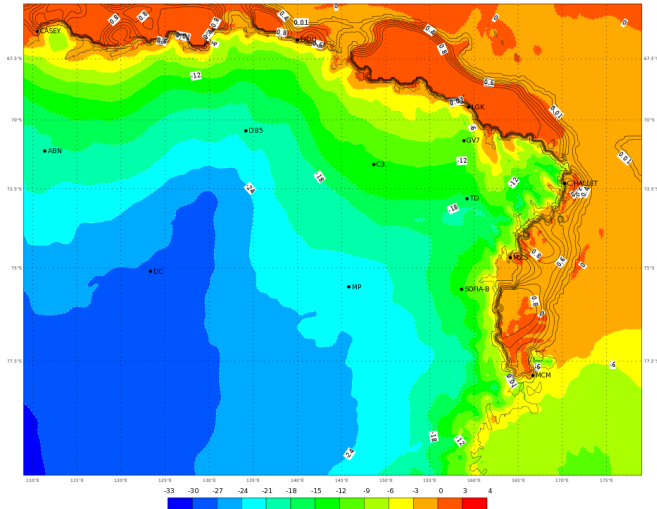
ECMWF 13 Gennaio 2018 00UTC Forecast T+48 VT: Lunedì 15 Gennaio 2018 00UTC  
Terra Vittoria - Total cloud cover (oct)



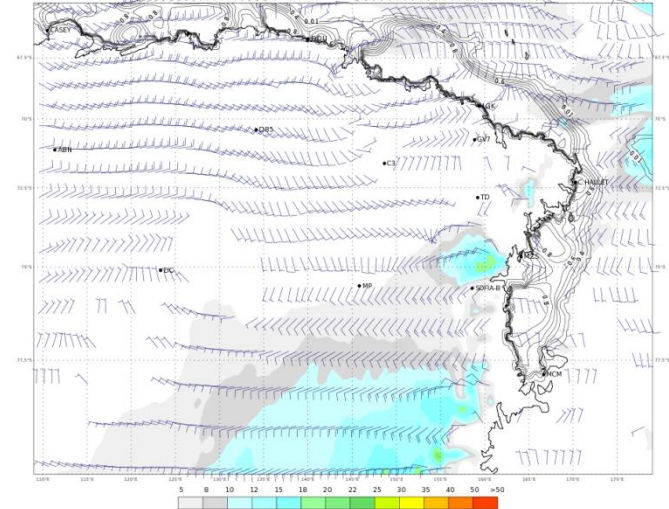
ECMWF 13 Gennaio 2018 00UTC Forecast T+48 VT: Lunedì 15 Gennaio 2018 00UTC  
Terra Vittoria - Geopotential at 500 hPa + 6h accumulated precipitation (mm)



ECMWF 13 Gennaio 2018 00UTC Forecast T+48 VT: Lunedì 15 Gennaio 2018 00UTC  
Terra Vittoria - temperature at 2 m (°C)



ECMWF 13 Gennaio 2018 00UTC Forecast T+48 VT: Lunedì 15 Gennaio 2018 00UTC  
Terra Vittoria - Wind at 10 m (kts)

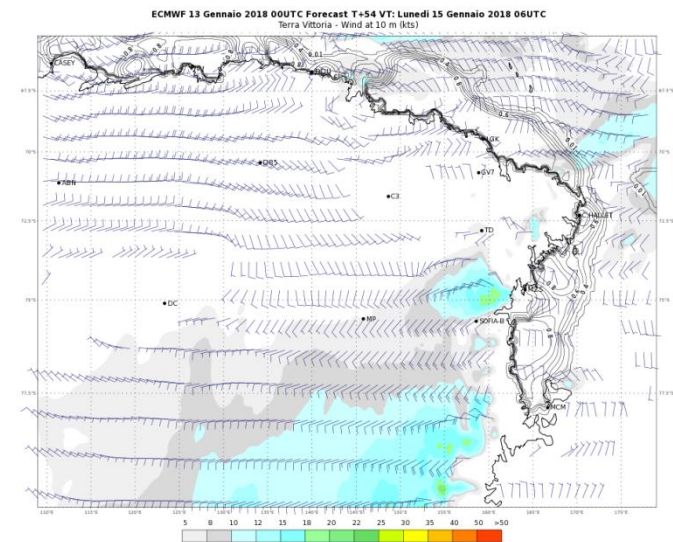
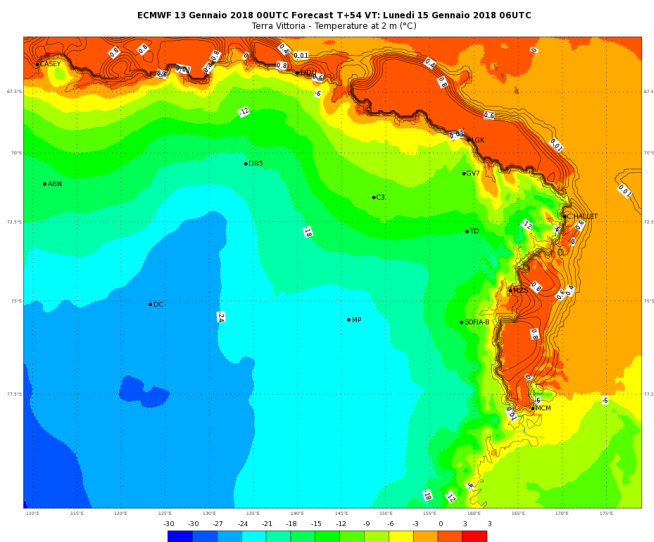
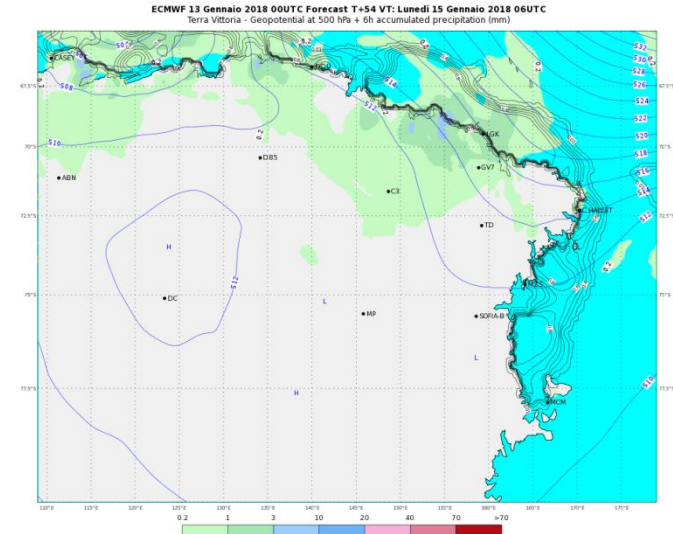
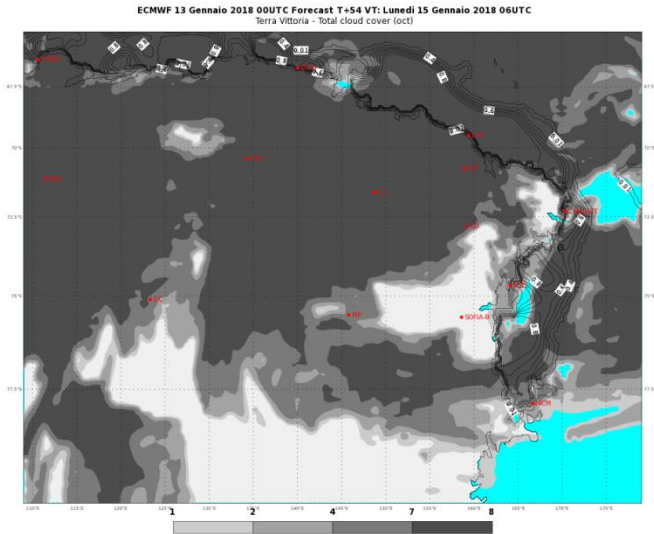


[Indietro all'indice - back to index](#)

# PREVISIONI - FORECASTS




## DOMANI - ORE 19 LT

## TOMORROW - 19 LT





# WEATHER FORECAST FOR TOMORROW AT TERRA NOVA BAY

## Monday 15/01/2018

	ORE 07	ORE 13	ORE 19
CIELO			
FENOMENI	NIL	NIL	NIL
VENTO MZS	NNW 05/10 KT	WSW 05/10 KT	WSW 15/20 KT
VENTO BOULDER	WNW 10/15 KT	WSW 10/15 KT	WSW 25/35 KT
TEMPERATURA [°C]	-03/-01 °C	-01/+01 °C	00/+02 °C
WIND CHILL [°C]	-09/-06 °C	-07/-04 °C	-08/-05 °C
AVVISI	NIL	NIL	NIL

# WEATHER TENDENCY AT TERRA NOVA BAY

Tuesday 16/01/2018

	MATTINO	POMERIGGIO
CIELO		
FENOMENI	NIL	NIL
VENTO MZS	WSW 10/15 KT	WSW 05/10 KT
VENTO BOULDER	WSW 15/25 KT	WSW 10/15 KT
TEMPERATURA [°C]	-03/-01 °C	-03/-01 °C
WIND CHILL [°C]	-11/-08 °C	-09/-06 °C
AVVISI	NIL	NIL

[http://mzs-pdc.mzs.pnra.it/meteo/bollettino\\_meteo.pdf](http://mzs-pdc.mzs.pnra.it/meteo/bollettino_meteo.pdf)

[Indietro all'indice – back to index](#)



# Extreme Values of Yesterday



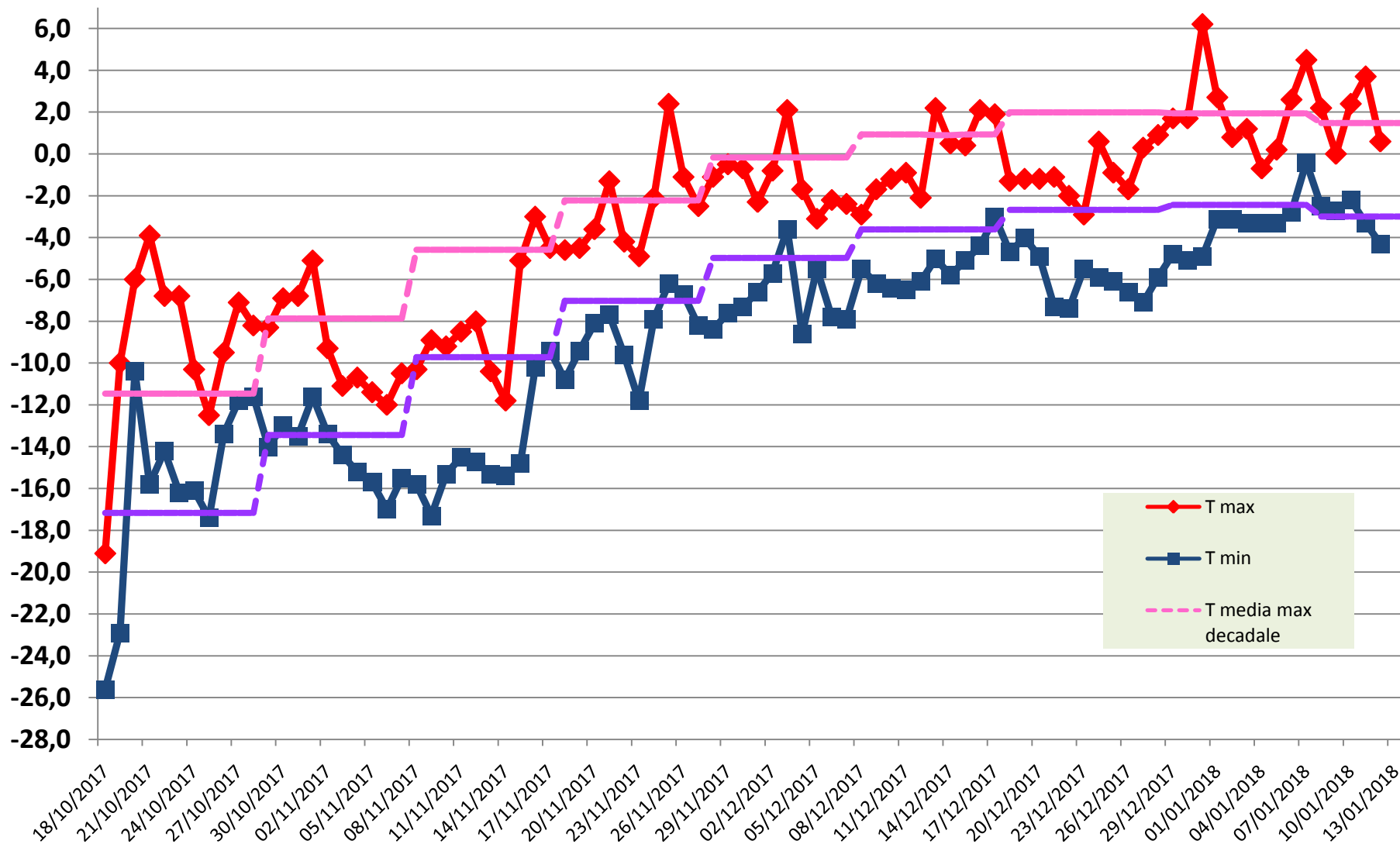
<b>13/01/2018 UTC time (13:00 12/01 - 13:00 13/01)</b>		
<b>MAX temperature</b>	<b>(ore 18:18/L)</b>	<b>0.6°C</b>
<b>MIN temperature</b>	<b>(ore 06:02/L)</b>	<b>-4.3 °C</b>
<b>MAX humidity</b>	<b>(ore 18:04/L)</b>	<b>64 %</b>
<b>MIN humidity</b>	<b>(ore 22:43/L)</b>	<b>37 %</b>
<b>MAX wind direction/speed</b>	<b>(ore 12:09/L)</b>	<b>231/15.8 KT</b>

**Remark:** *the reported values are referred to the previous day in terms of Universal Time and not in local time (UTC+13).*



# Temperature measured during the XXXIII Expedition

ENEIDE weather station (MZS) - Antarctic Climatology Observatory

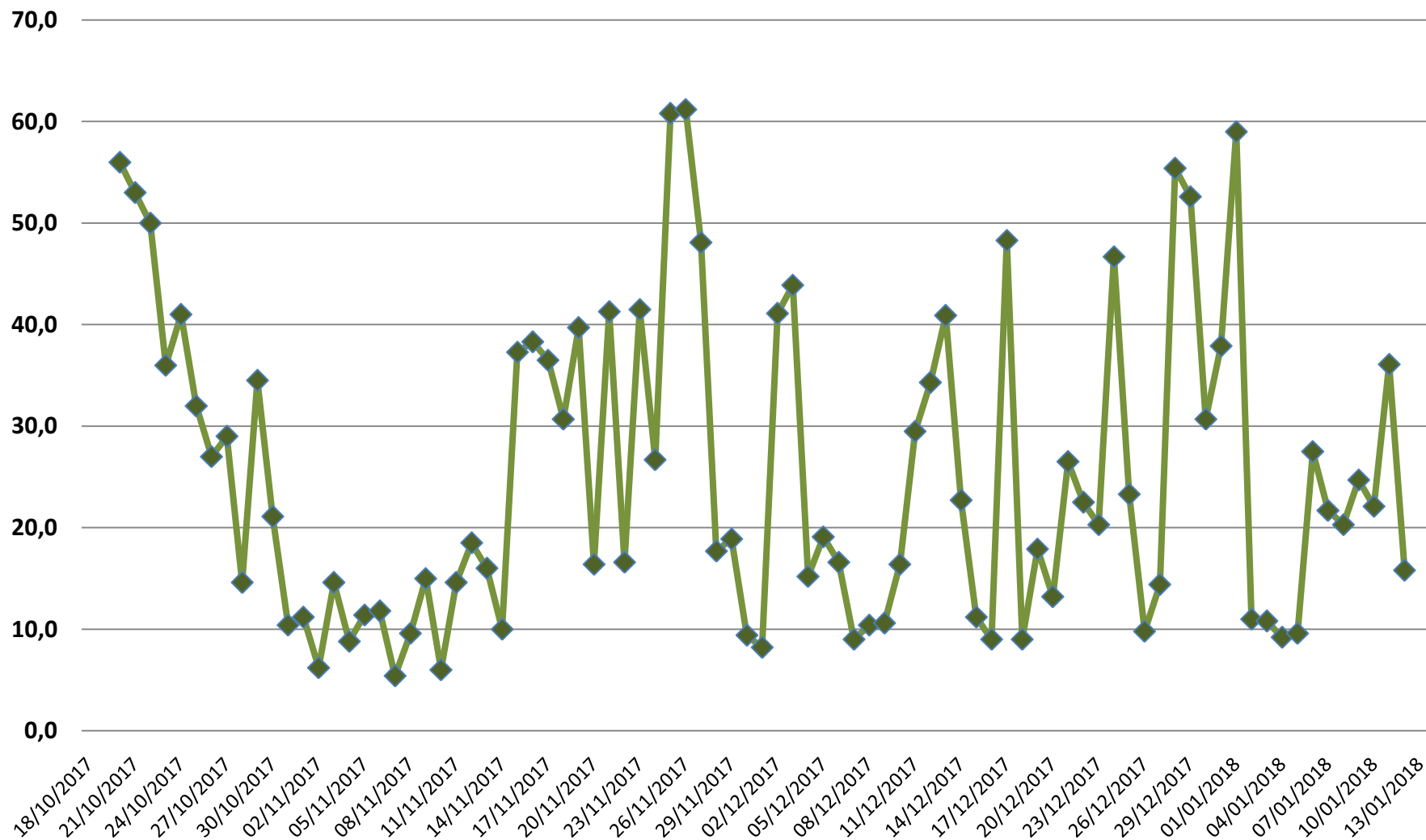






# MAX wind [kt] measured during the XXXIII Expedition

ENEIDE weather station (MZS) - Antarctic Climatology Observatory



**Per ulteriori informazioni contattare  
l'Ufficio Meteorologico di MZS  
int. 510**

**For further information please contact  
MZS Met Office  
ext. 510**

*AVVERTENZA/WARNING*

*Le presenti informazioni NON sono destinate alla pianificazione di volo e/o pre-volo  
The informations here presented are NOT intended for flight planning and/or pre-flight*

[Indietro all'indice – back to index](#)