



WEATHER

Meteorological observations and forecasts

Monday 15/01/2018

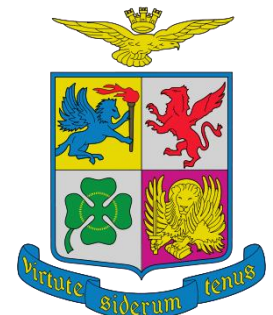
MET Office - "Mario Zucchelli" Base - Terranova Bay

Ten. Col. Luigi Verzelletti
Cap. Francesco Mariella



Agenzia nazionale per le nuove tecnologie,
l'energia e lo sviluppo economico sostenibile

Information NOT intended for flight planning and pre-flight



Indice dei contenuti

Table of Contents

Puoi saltare direttamente sull'argomento di interesse cliccandoci sopra

Jump directly to the issue of your interest just clicking on it

1. [Situazione – Situation](#)
2. [Ultime Misure delle Stazioni Meteo Automatiche - Last Measurements from Automatic Weather Stations](#)
3. [Dati attuali a MZS – Current data at MZS \(ENEIDE – ‘Campo Meteo’\)](#)
4. [Mappe di previsione: oggi ore 07/L – Forecast Maps: today 07/L](#)
5. [Mappe di previsione: oggi ore 13/L – Forecast Maps: today 13/L](#)
6. [Mappe di previsione: oggi ore 19/L – Forecast Maps: today 19/L](#)
7. [Tempo previsto oggi a Baia Terra Nova – Weather Forecast for today at Terra Nova Bay](#)
8. [Mappe di previsione: domani ore 01/L – Forecast Maps: tomorrow 01/L](#)
9. [Mappe di previsione: domani ore 07/L – Forecast Maps: tomorrow 07/L](#)
10. [Mappe di previsione: domani ore 13/L – Forecast Maps: tomorrow 13/L](#)
11. [Mappe di previsione: domani ore 19/L – Forecast Maps: tomorrow 19/L](#)
12. [Tempo previsto domani a Baia Terra Nova – Weather Forecast for tomorrow at Terra Nova Bay](#)
13. [Tendenza per dopodomani a Baia Terra Nova – Weather Tendency for the day after tomorrow at Terra Nova Bay](#)
14. [Valori estremi di ieri – Extreme Values of Yesterday](#)
15. [Andamento delle Temperature durante la Spedizione](#)
16. [Andamento del vento massimo durante la Spedizione](#)
17. [Contatti - Contacts](#)



WEATHER

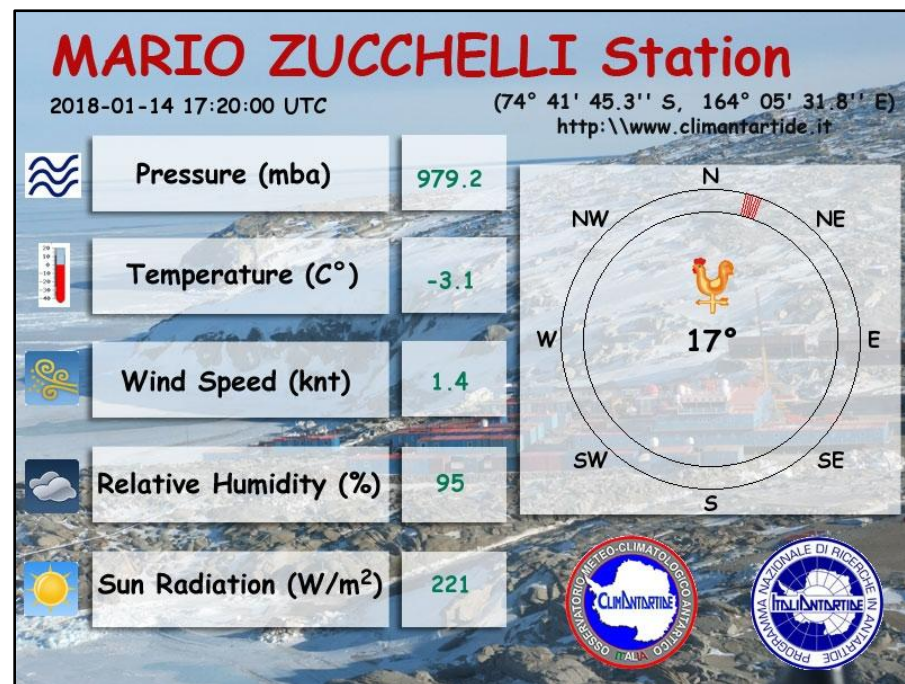
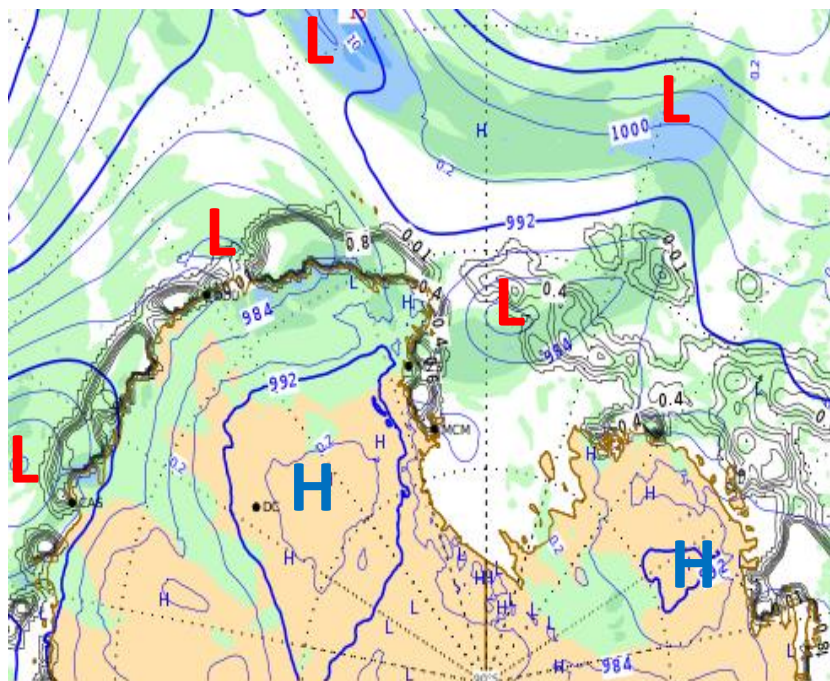
Meteorological observations and forecasts



Monday 15/01/2018

Sea Level Pressure + Precipitation at 07:00

Latest Report

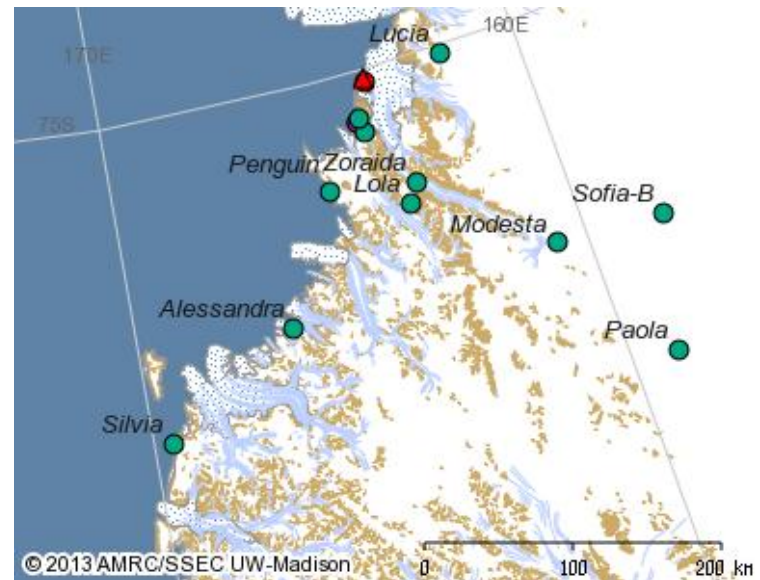
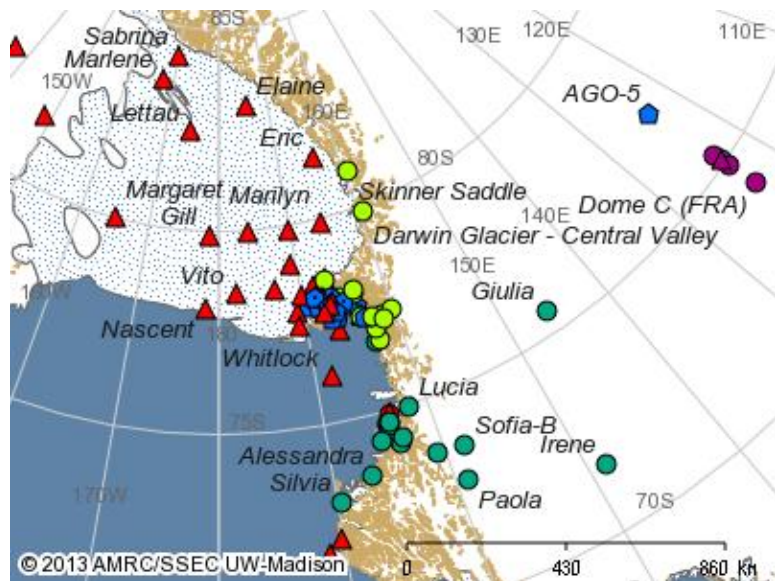


VENTO AREA BOULDER: NE 10 KT (06:20 loc time recorded)

Automatic Weather Stations (AWS) Updates

AWS	Datetime UTC	Wind Direction [°]	Wind Speed [kts]	Wind Gust [kts]	Temperature [°C]	MAX_Temp [°C]	MIN_Temp [°C]	Humidity [%]	Pressure [hPa]
Alessandra	2018-01-14 17:00	230	2	16	-1.9	-1.8	-2.2	88	970.2
Arelis	2018-01-14 17:00	320	6	11	-4.9	-2.6	-4.9	11	969.3
Concordia	2018-01-14 17:00	70	5	9	-30.8	-30.8	-32.9	73	645.5
Eneide	2018-01-14 17:00	70	4	7	-3.4	-2.9	-3.7	96	979.2
Giulia	2018-01-14 17:00	220	5	6	-25.9	-25.3	-25.9	77	717.4
Lola	2018-01-14 17:00	200	10	10	-14.1	-14.0	-14.7	87	803.9
Modesta	2018-01-14 17:00	180	4	7	-17.7	-17.7	-18.1	85	767.3
Paola	2018-01-07 14:00	80	6	7	-21.6	-21.3	-22.2	82	//
Rita	2018-01-14 17:00	50	2	23	-4.3	-4.2	-4.8	99	958.1
Silvia	2018-01-14 17:00	250	31	40	-5.6	-5.5	-5.7	//	922.0
Sofiab	2018-01-14 16:00	220	15	17	-18.6	//	//	85	811.2
Zoraida	2018-01-14 17:00	320	5	7	-8.7	-8.2	-8.7	99	888.0

N.B. I dati presenti non sono validati e quindi non adatti ad un uso operativo.



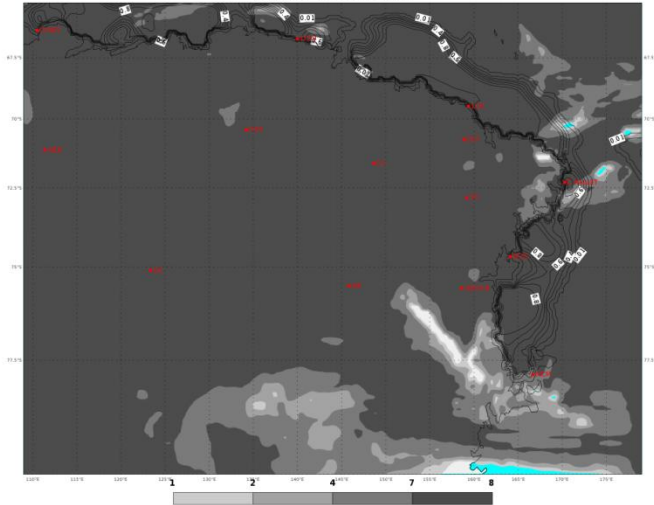
[Indietro all'indice – back to index](#)

PREVISIONI - FORECASTS

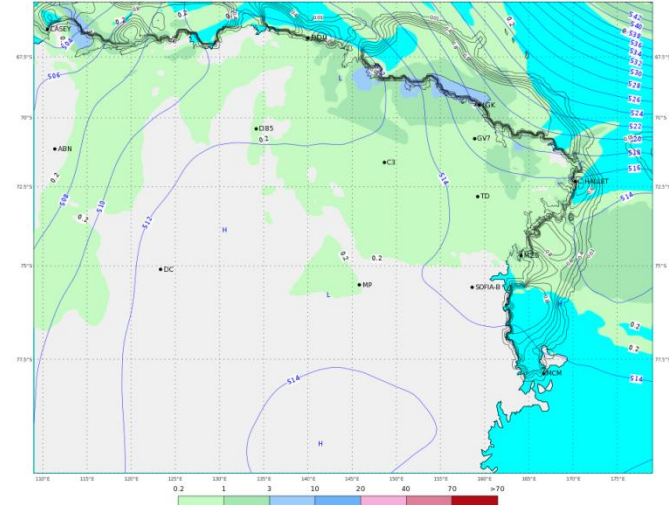
OGGI - ORE 07 LT

TODAY - 07 LT

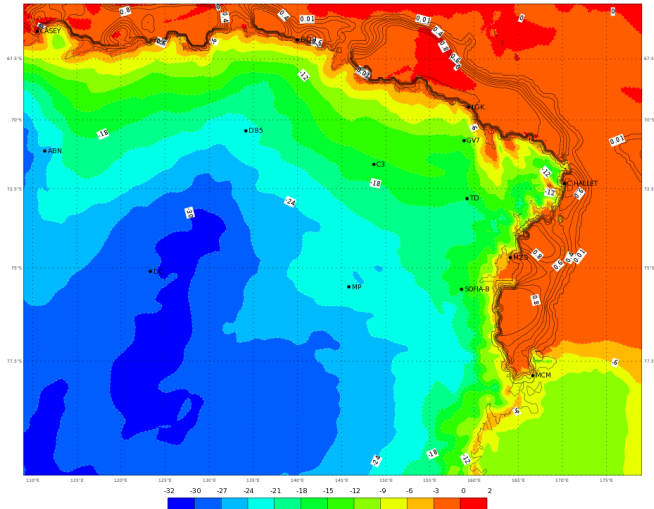
ECMWF 14 Gennaio 2018 00UTC Forecast T+18 VT: Domenica 14 Gennaio 2018 18UTC
Terra Vittoria - Total cloud cover (oct)



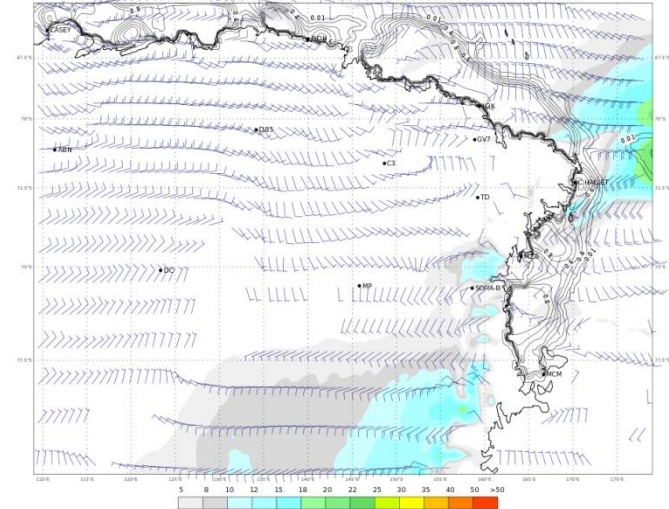
ECMWF 14 Gennaio 2018 00UTC Forecast T+18 VT: Domenica 14 Gennaio 2018 18UTC
Terra Vittoria - Geopotential at 500 hPa + 6h accumulated precipitation (mm)



ECMWF 14 Gennaio 2018 00UTC Forecast T+18 VT: Domenica 14 Gennaio 2018 18UTC
Terra Vittoria - Temperature at 2 m (°C)



ECMWF 14 Gennaio 2018 00UTC Forecast T+18 VT: Domenica 14 Gennaio 2018 18UTC
Terra Vittoria - Wind at 10 m (kts)

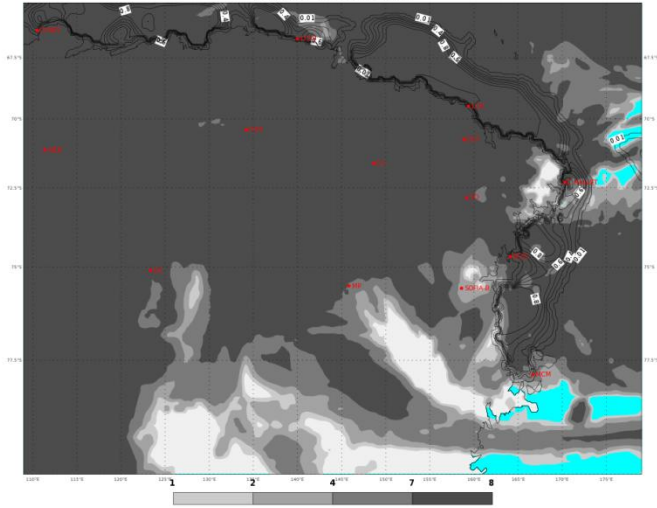


PREVISIONI - FORECASTS

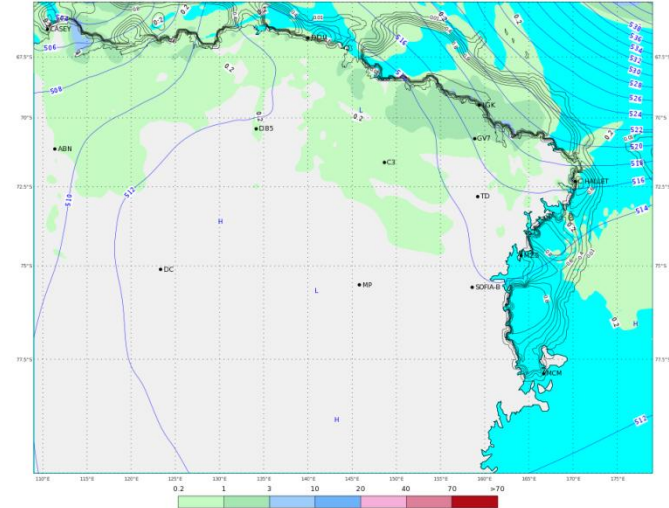
OGGI - ORE 13 LT

TODAY - 13 LT

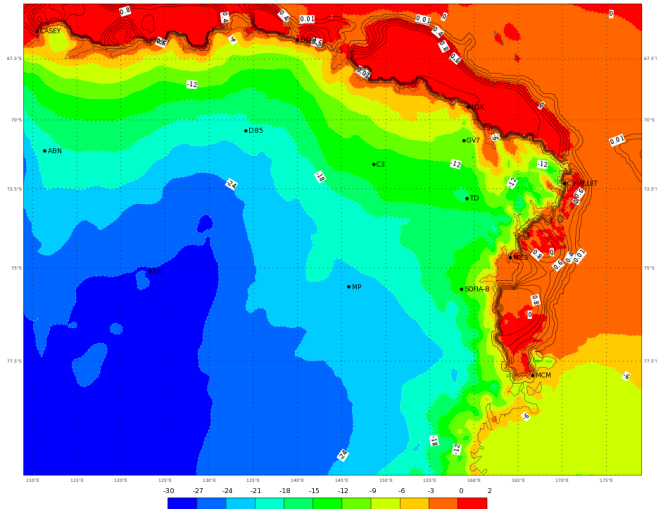
ECMWF 14 Gennaio 2018 00UTC Forecast T+24 VT: Lunedì 15 Gennaio 2018 00UTC
Terra Vittoria - Total cloud cover (oct)



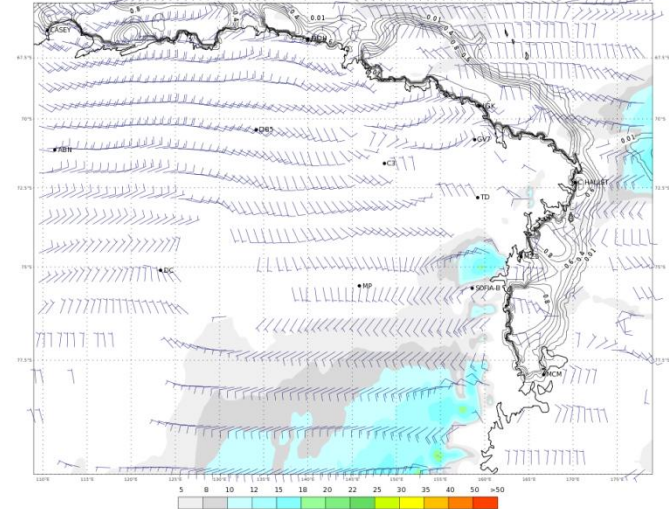
ECMWF 14 Gennaio 2018 00UTC Forecast T+24 VT: Lunedì 15 Gennaio 2018 00UTC
Terra Vittoria - Geopotential at 500 hPa + 6h accumulated precipitation (mm)



ECMWF 14 Gennaio 2018 00UTC Forecast T+24 VT: Lunedì 15 Gennaio 2018 00UTC
Terra Vittoria - Temperature at 2 m (°C)



ECMWF 14 Gennaio 2018 00UTC Forecast T+24 VT: Lunedì 15 Gennaio 2018 00UTC
Terra Vittoria - Wind at 10 m (kts)



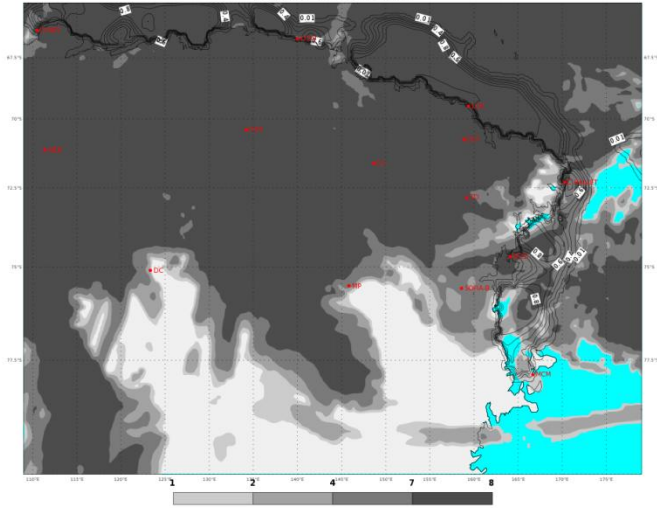
[Indietro all'indice - back to index](#)

PREVISIONI - FORECASTS

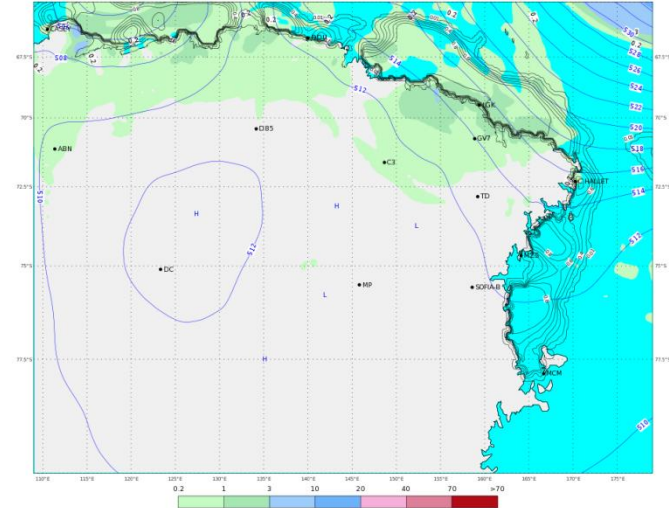
OGGI - ORE 19 LT

TODAY - 19 LT

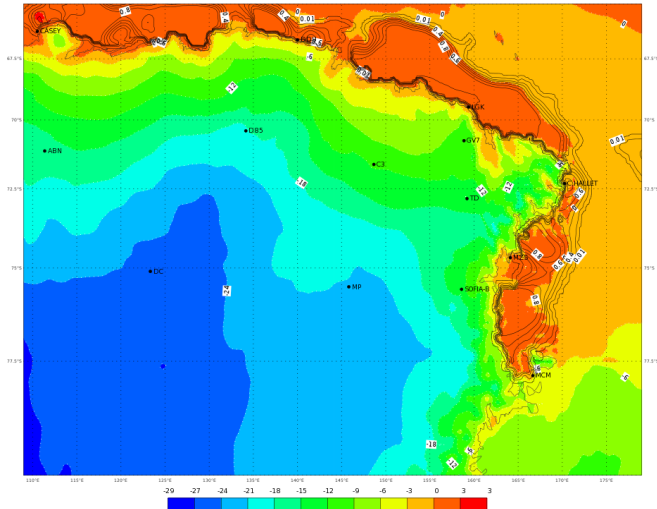
ECMWF 14 Gennaio 2018 00UTC Forecast T+30 VT: Lunedì 15 Gennaio 2018 06UTC
Terra Vittoria - total cloud cover (oct)



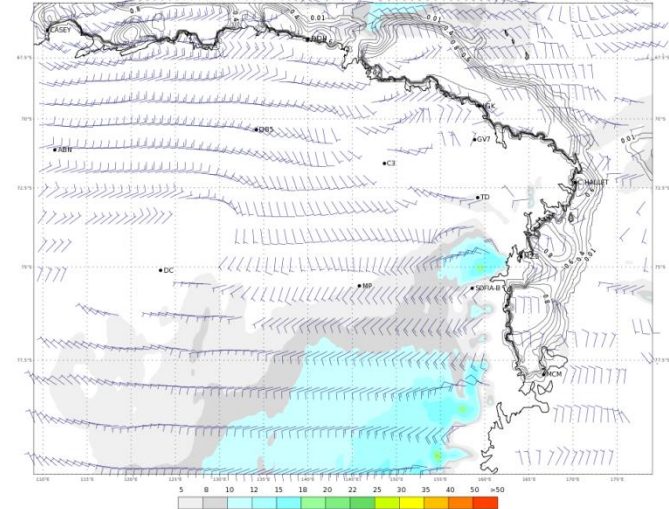
ECMWF 14 Gennaio 2018 00UTC Forecast T+30 VT: Lunedì 15 Gennaio 2018 06UTC
Terra Vittoria - Geopotential at 500 hPa + 6h accumulated precipitation (mm)



ECMWF 14 Gennaio 2018 00UTC Forecast T+30 VT: Lunedì 15 Gennaio 2018 06UTC
Terra Vittoria - temperature at 2 m (°C)






ECMWF 14 Gennaio 2018 00UTC Forecast T+30 VT: Lunedì 15 Gennaio 2018 06UTC
Terra Vittoria - Wind at 10 m (kts)



WEATHER FORECAST FOR TODAY AT TERRA NOVA BAY

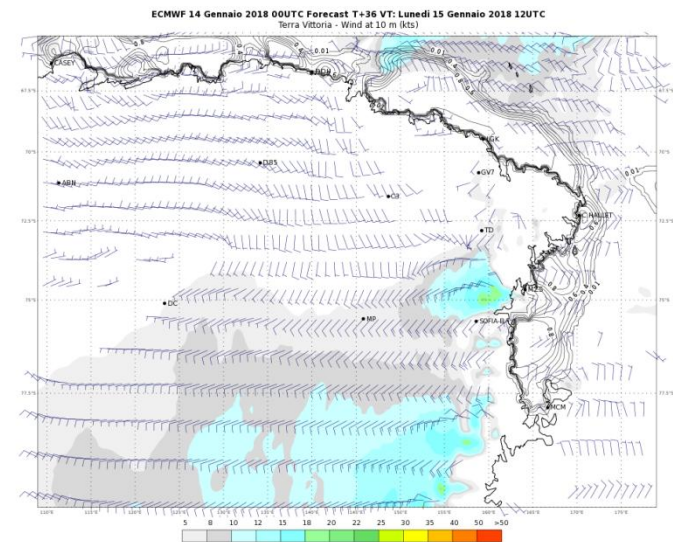
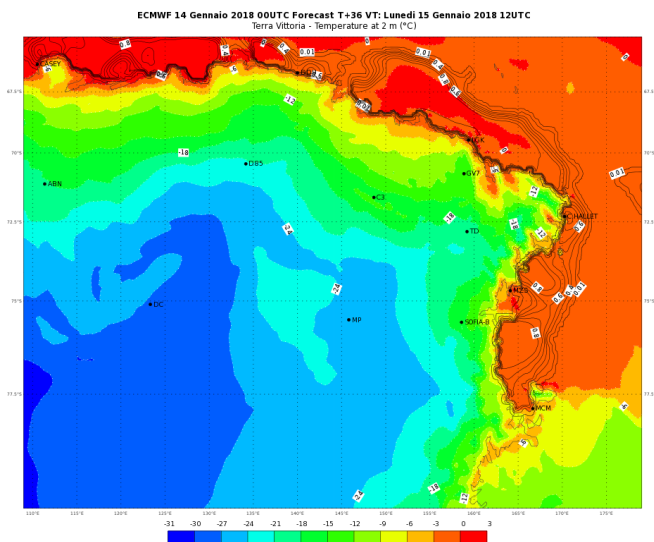
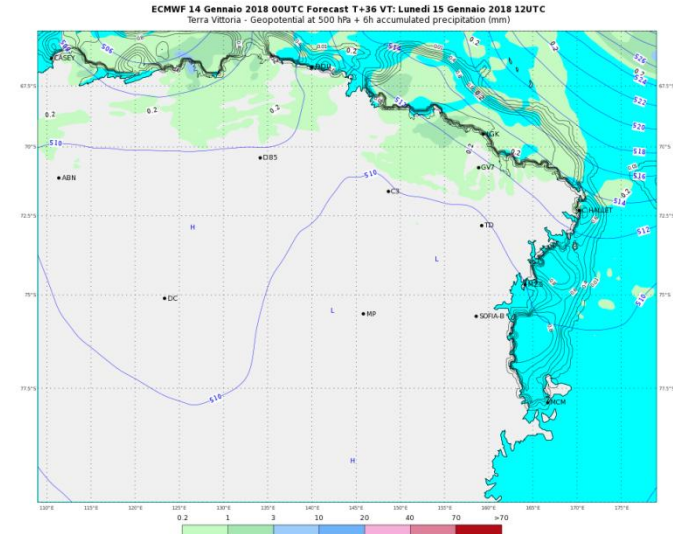
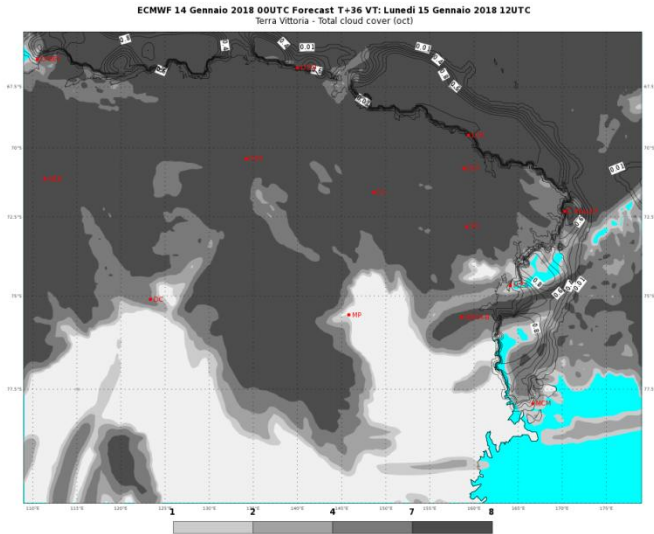
Monday 15/01/2018

	ORE 07	ORE 13	ORE 19
CIELO			
FENOMENI	NIL	NIL	NIL
VENTO MZS	VRB 07 KT	ENE 05/10 KT	ESE 05/10 KT
VENTO BOULDER	NE 10/15 KT	ENE 10/15 KT	ESE 10/15 KT
TEMPERATURA [°C]	-03/-01 °C	-01/+01 °C	00/+02 °C
WIND CHILL [°C]	-08/-05 °C	-07/-04 °C	-05/-02 °C
AVVISI	NIL	NIL	NIL

PREVISIONI - FORECASTS

DOMANI - ORE 01 LT

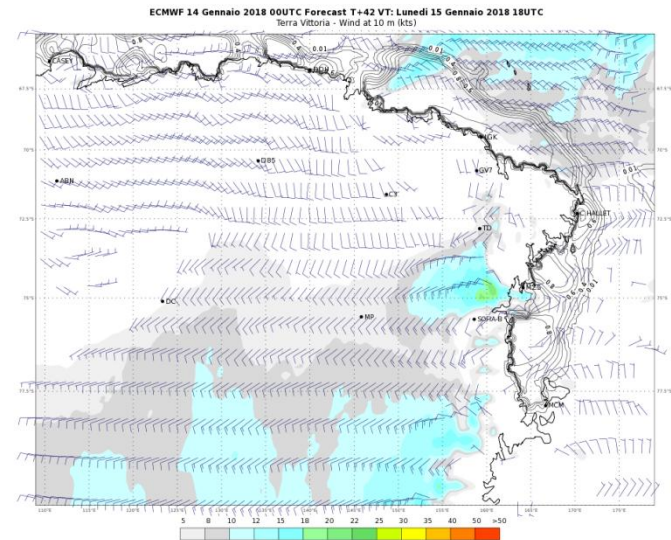
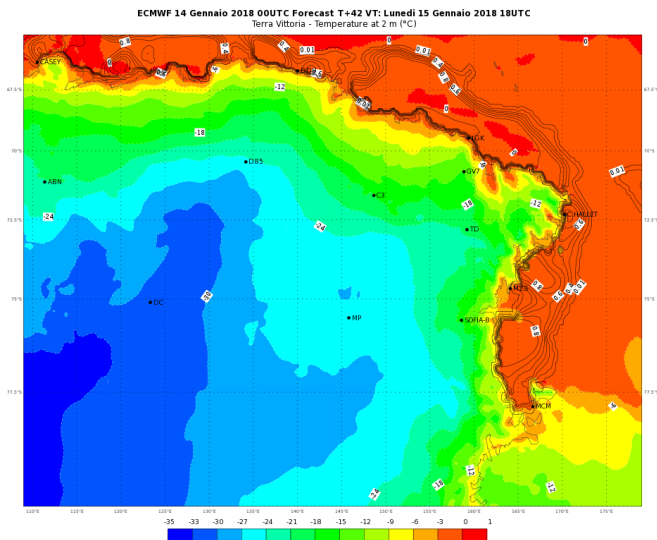
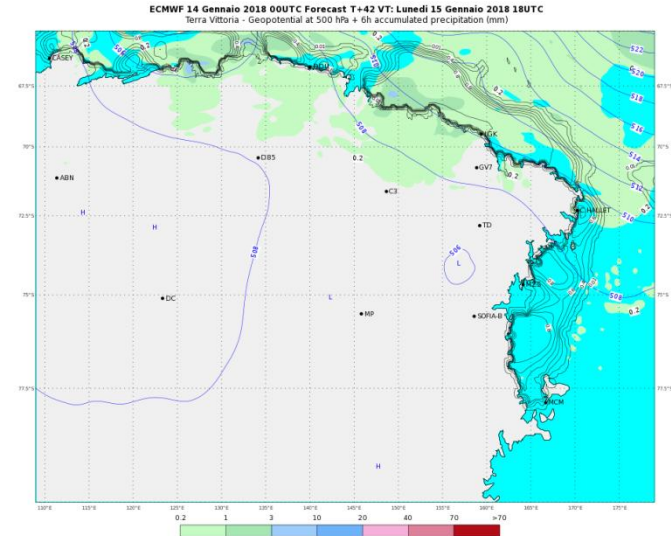
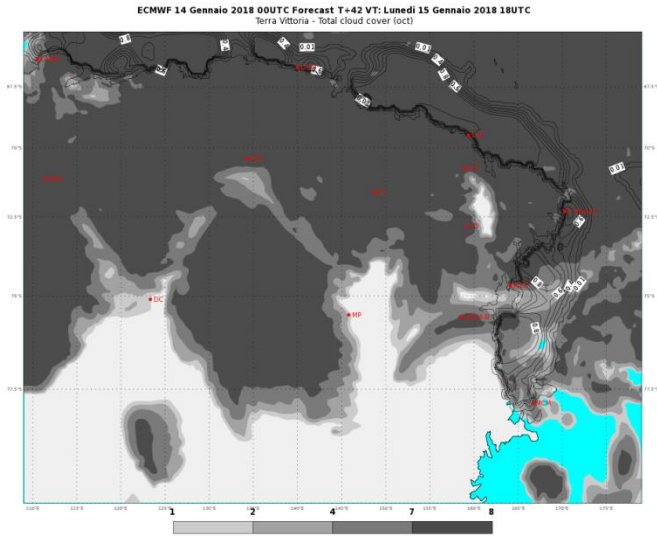
TOMORROW - 01 LT



PREVISIONI - FORECASTS

DOMANI - ORE 07 LT

TOMORROW - 07 LT



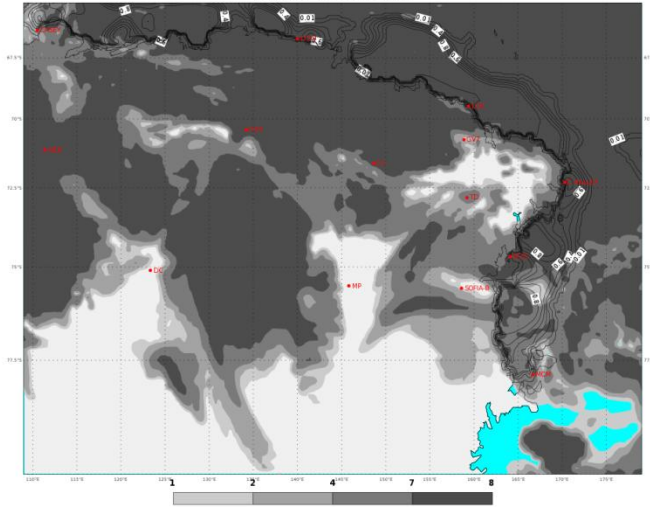
[Indietro all'indice - back to index](#)

PREVISIONI - FORECASTS

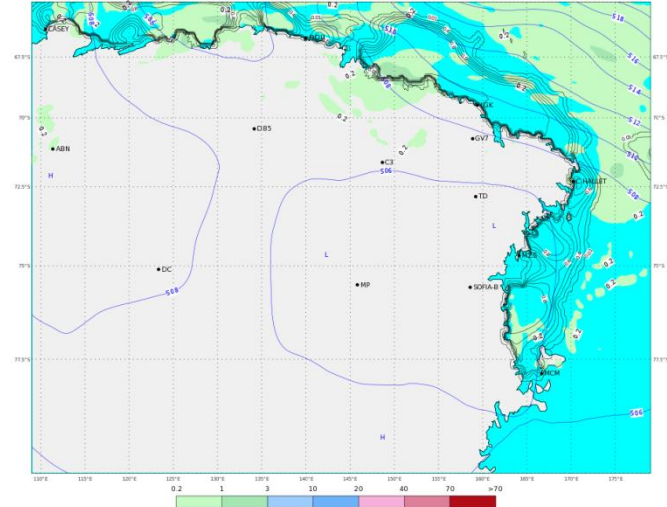
DOMANI - ORE 13 LT

TOMORROW - 13 LT

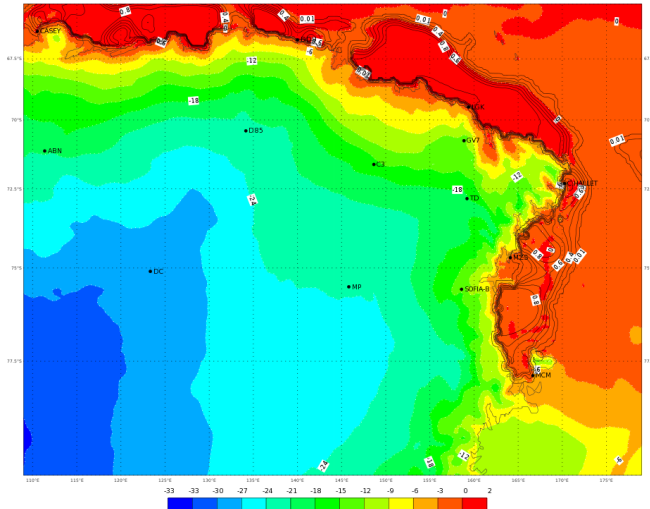
ECMWF 14 Gennaio 2018 00UTC Forecast T+48 VT: Martedì 16 Gennaio 2018 00UTC
Terra Vittoria - Total cloud cover (oct)



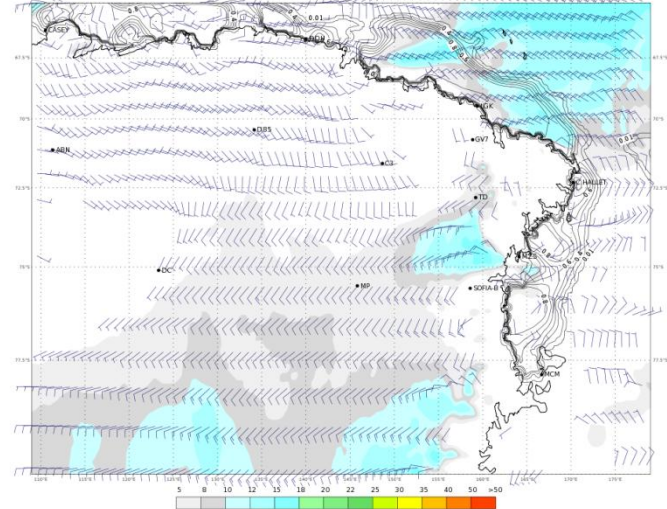
ECMWF 14 Gennaio 2018 00UTC Forecast T+48 VT: Martedì 16 Gennaio 2018 00UTC
Terra Vittoria - Geopotential at 500 hPa + 6h accumulated precipitation (mm)



ECMWF 14 Gennaio 2018 00UTC Forecast T+48 VT: Martedì 16 Gennaio 2018 00UTC
Terra Vittoria - Temperature at 2 m (°C)



ECMWF 14 Gennaio 2018 00UTC Forecast T+48 VT: Martedì 16 Gennaio 2018 00UTC
Terra Vittoria - Wind at 10 m (kts)

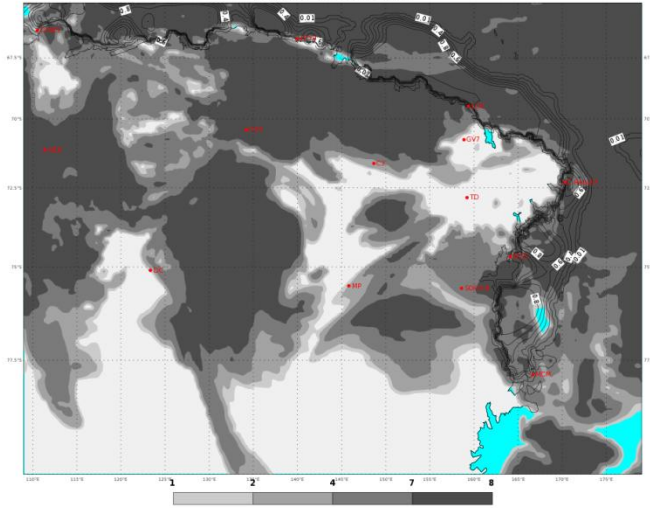


PREVISIONI - FORECASTS

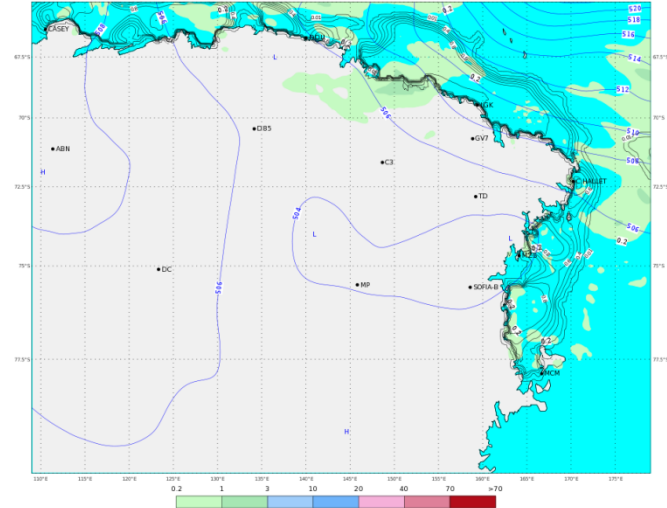
DOMANI - ORE 19 LT

TOMORROW - 19 LT

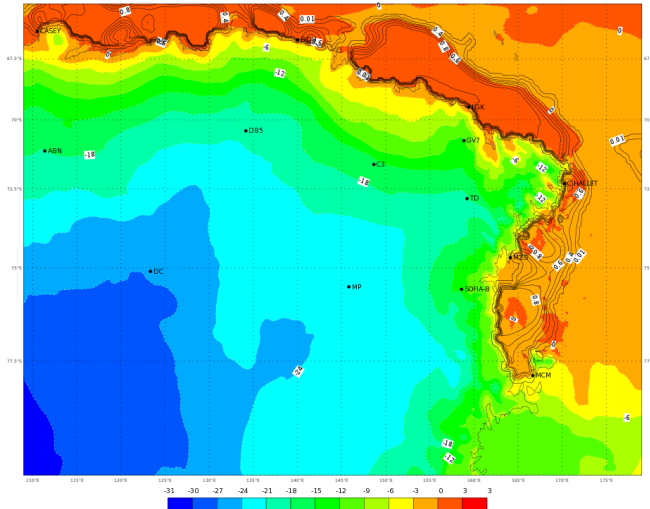
ECMWF 14 Gennaio 2018 00UTC Forecast T+54 VT: Martedì 16 Gennaio 2018 06UTC
Terra Vittoria - Total cloud cover (oct)



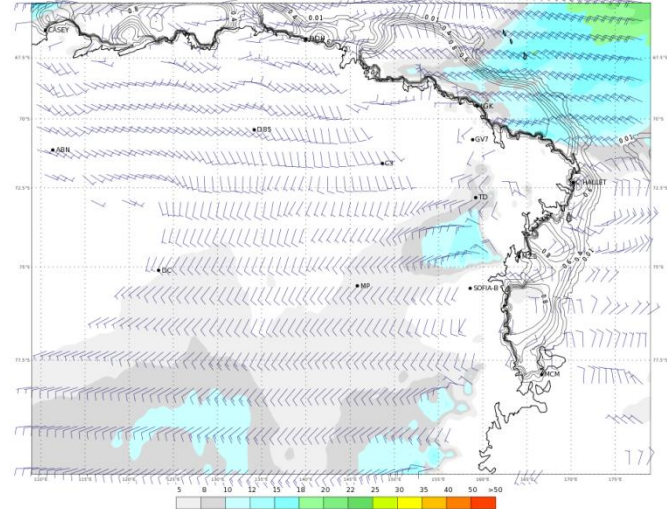
ECMWF 14 Gennaio 2018 00UTC Forecast T+54 VT: Martedì 16 Gennaio 2018 06UTC
Terra Vittoria - Geopotential at 500 hPa + 6h accumulated precipitation (mm)



ECMWF 14 Gennaio 2018 00UTC Forecast T+54 VT: Martedì 16 Gennaio 2018 06UTC
Terra Vittoria - Temperature at 2 m (°C)






ECMWF 14 Gennaio 2018 00UTC Forecast T+54 VT: Martedì 16 Gennaio 2018 06UTC
Terra Vittoria - Wind at 10 m (kts)



WEATHER FORECAST FOR TOMORROW AT TERRA NOVA BAY

Tuesday 16/01/2018



	ORE 07	ORE 13	ORE 19
CIELO			
FENOMENI	NIL	NIL	NIL
VENTO MZS	ENE 05/10 KT	ENE 05/10 KT	NE 05/10 KT
VENTO BOULDER	ENE 10/15 KT	ENE 10/15 KT	NE 10/15 KT
TEMPERATURA [°C]	-03/-01 °C	-02/00 °C	-02/00 °C
WIND CHILL [°C]	-09/-06 °C	-08/-05 °C	-08/-05 °C
AVVISI	NIL	NIL	NIL

http://mzs-pdc.mzs.pnra.it/meteo/bollettino_meteo.pdf

[Indietro all'indice – back to index](#)

WEATHER TENDENCY AT TERRA NOVA BAY

Wednesday 17/01/2018

	MATTINO	POMERIGGIO
CIELO		
FENOMENI	NIL	NIL
VENTO MZS	WNW 10/15 KT	WNW 05/10 KT
VENTO BOULDER	WNW 15/25 KT	WNW 10/15 KT
TEMPERATURA [°C]	-04/-02 °C	-03/-01 °C
WIND CHILL [°C]	-11/-09 °C	-09/-06 °C
AVVISI	NIL	NIL

http://mzs-pdc.mzs.pnra.it/meteo/bollettino_meteo.pdf

[Indietro all'indice – back to index](#)



Extreme Values of Yesterday



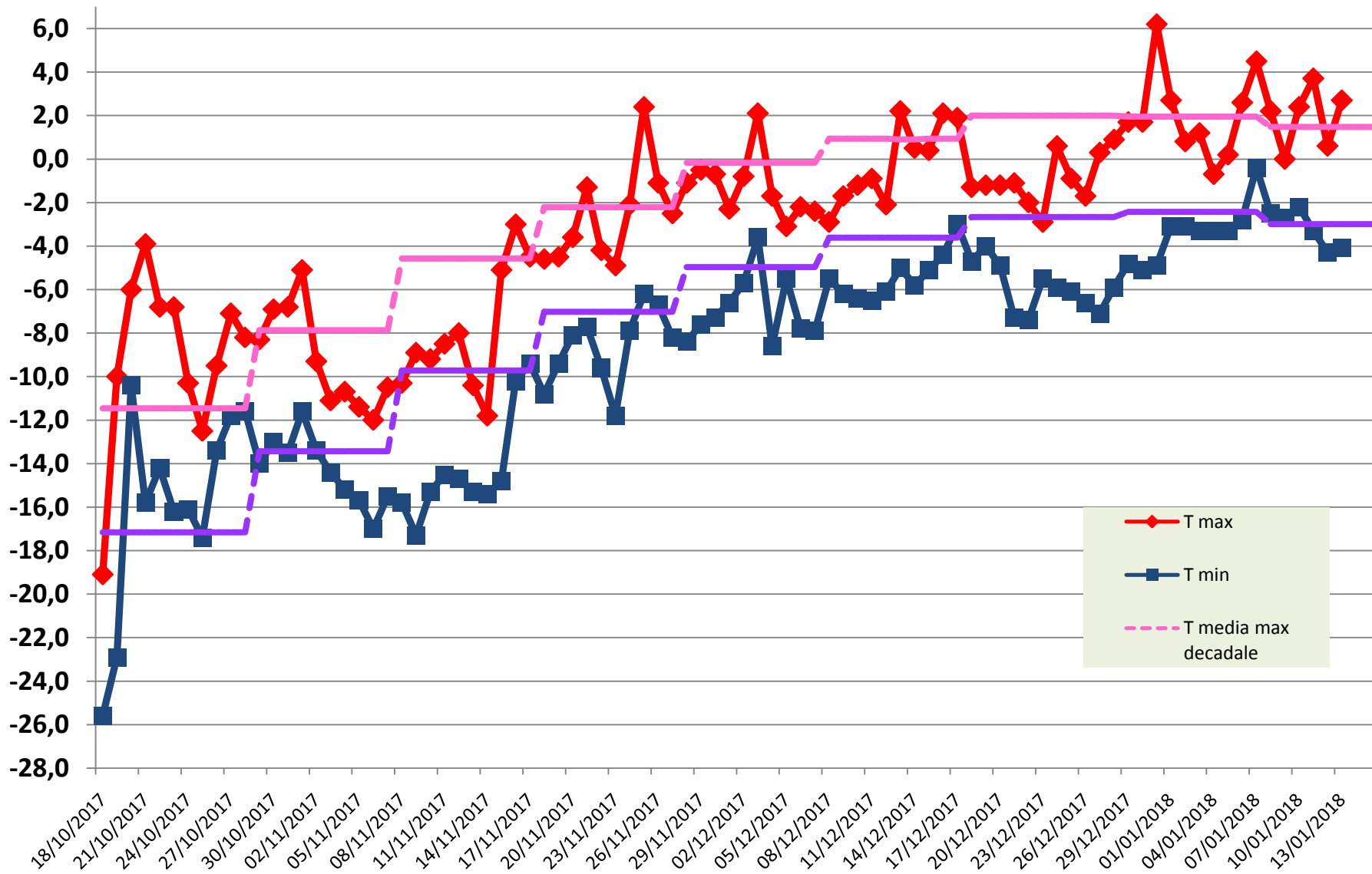
14/01/2018 UTC time (13:00 13/01 - 13:00 14/01)		
MAX temperature	(ore 17:27/L)	2.7°C
MIN temperature	(ore 05:54/L)	-4.1 °C
MAX humidity	(ore 09:44/L)	73 %
MIN humidity	(ore 17:13/L)	31 %
MAX wind direction/speed	(ore 19:28/L)	152/9.4 KT

Remark: *the reported values are referred to the previous day in terms of Universal Time and not in local time (UTC+13).*



Temperature measured during the XXXIII Expedition

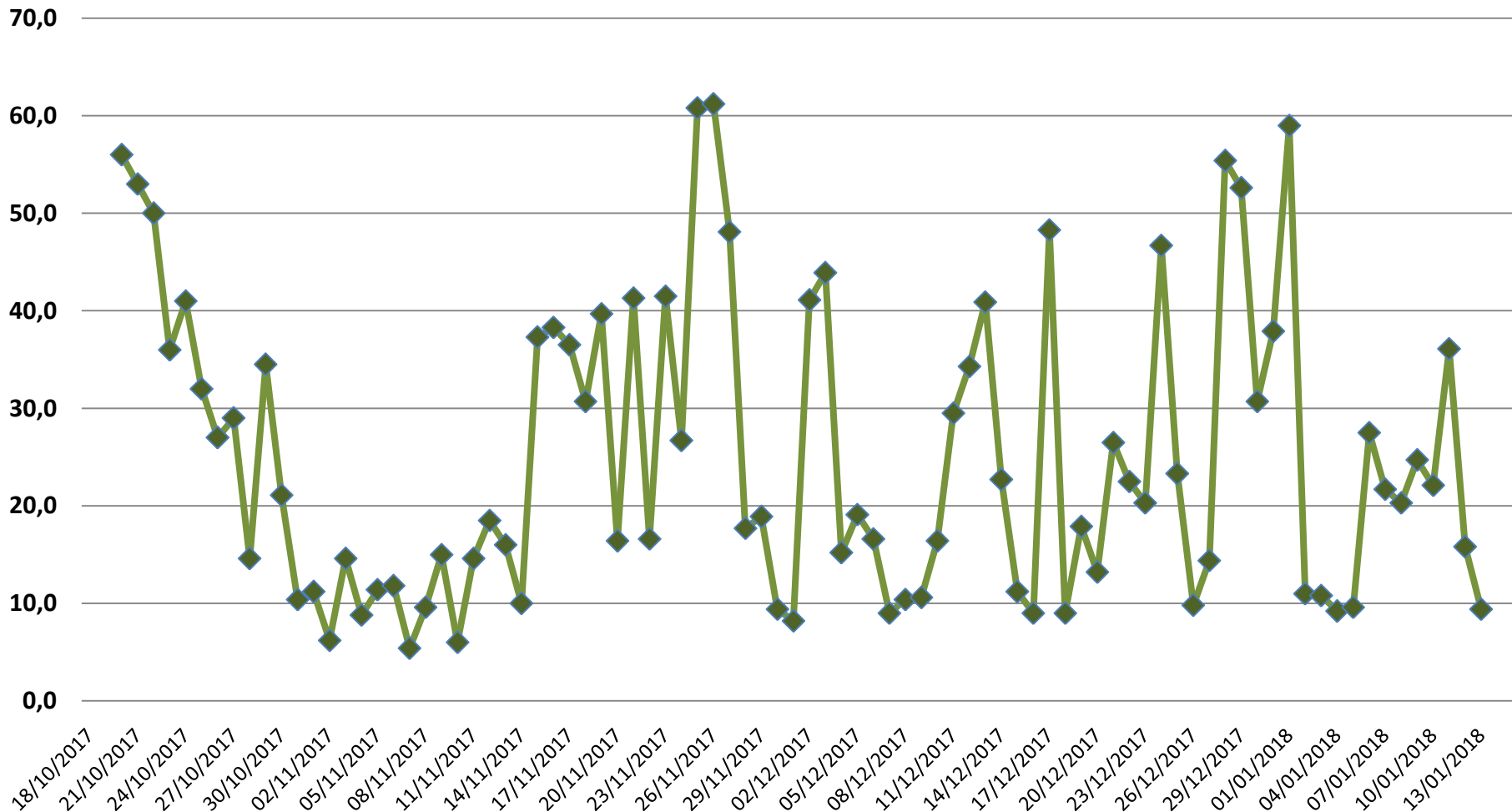
ENEIDE weather station (MZS) - Antarctic Climatology Observatory





MAX wind [kt] measured during the XXXIII Expedition

ENEIDE weather station (MZS) - Antarctic Climatology Observatory



**Per ulteriori informazioni contattare
l'Ufficio Meteorologico di MZS
int. 510**

**For further information please contact
MZS Met Office
ext. 510**

AVVERTENZA/WARNING

*Le presenti informazioni NON sono destinate alla pianificazione di volo e/o pre-volo
The informations here presented are NOT intended for flight planning and/or pre-flight*

[Indietro all'indice – back to index](#)