



WEATHER

Meteorological observations and forecasts

Wednesday 17/01/2018

MET Office - "Mario Zucchelli" Base - Terranova Bay

Ten. Col. Luigi Verzelletti
Cap. Francesco Mariella



Agenzia nazionale per le nuove tecnologie,
l'energia e lo sviluppo economico sostenibile

Information NOT intended for flight planning and pre-flight



Indice dei contenuti

Table of Contents

Puoi saltare direttamente sull'argomento di interesse cliccandoci sopra

Jump directly to the issue of your interest just clicking on it

1. [Situazione – Situation](#)
2. [Ultime Misure delle Stazioni Meteo Automatiche - Last Measurements from Automatic Weather Stations](#)
3. [Dati attuali a MZS – Current data at MZS \(ENEIDE – ‘Campo Meteo’\)](#)
4. [Mappe di previsione: oggi ore 07/L – Forecast Maps: today 07/L](#)
5. [Mappe di previsione: oggi ore 13/L – Forecast Maps: today 13/L](#)
6. [Mappe di previsione: oggi ore 19/L – Forecast Maps: today 19/L](#)
7. [Tempo previsto oggi a Baia Terra Nova – Weather Forecast for today at Terra Nova Bay](#)
8. [Mappe di previsione: domani ore 01/L – Forecast Maps: tomorrow 01/L](#)
9. [Mappe di previsione: domani ore 07/L – Forecast Maps: tomorrow 07/L](#)
10. [Mappe di previsione: domani ore 13/L – Forecast Maps: tomorrow 13/L](#)
11. [Mappe di previsione: domani ore 19/L – Forecast Maps: tomorrow 19/L](#)
12. [Tempo previsto domani a Baia Terra Nova – Weather Forecast for tomorrow at Terra Nova Bay](#)
13. [Tendenza per dopodomani a Baia Terra Nova – Weather Tendency for the day after tomorrow at Terra Nova Bay](#)
14. [Valori estremi di ieri – Extreme Values of Yesterday](#)
15. [Andamento delle Temperature durante la Spedizione](#)
16. [Andamento del vento massimo durante la Spedizione](#)
17. [Contatti - Contacts](#)



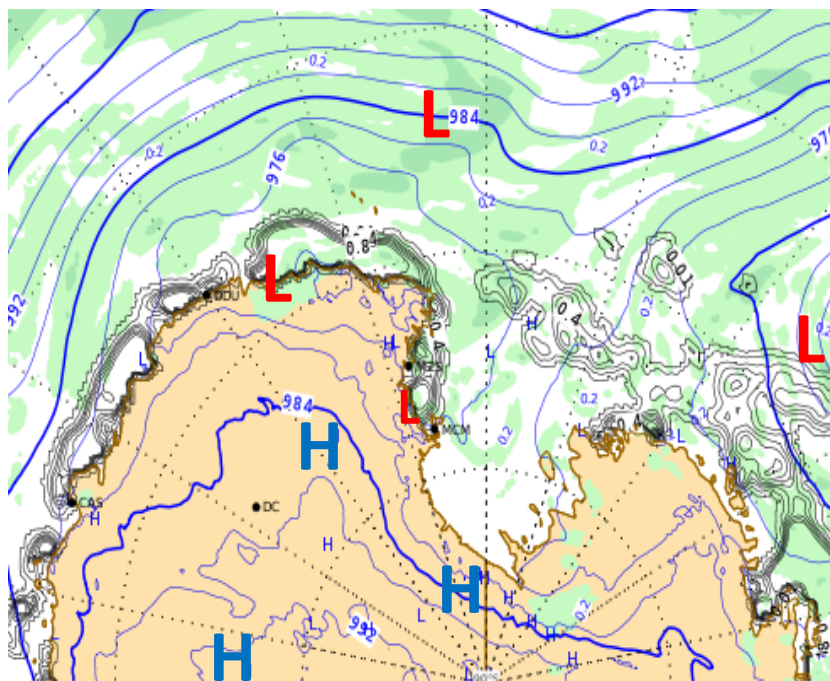
WEATHER

Meteorological observations and forecasts

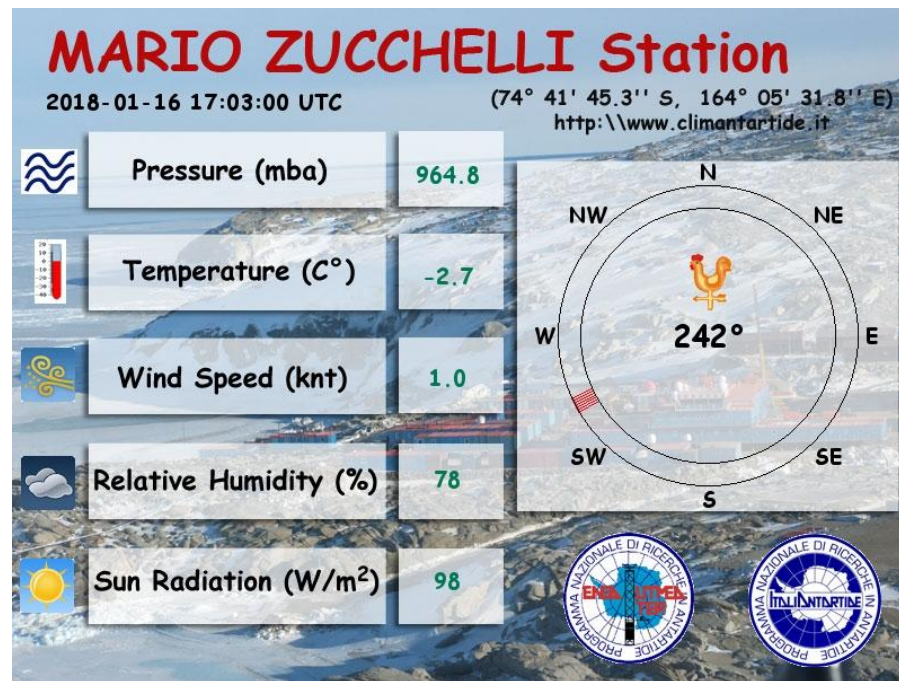


Wednesday 17/01/2018

Sea Level Pressure + Precipitation at 07:00



Latest Report

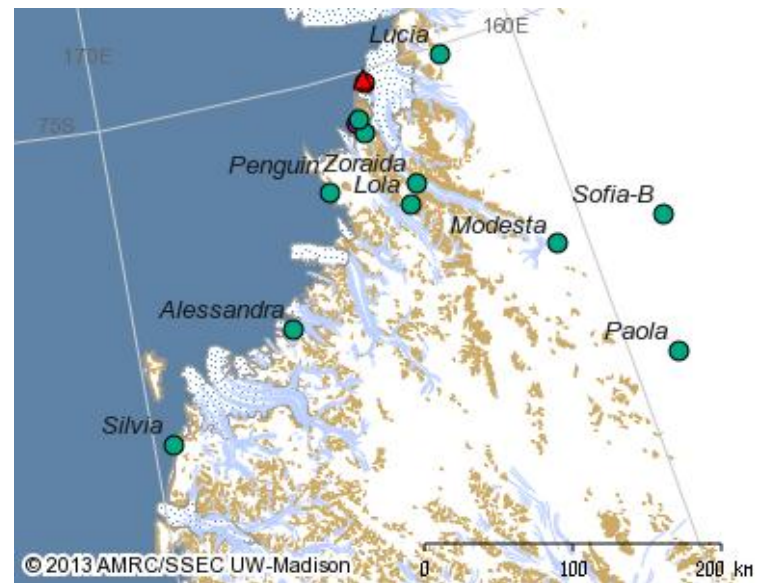
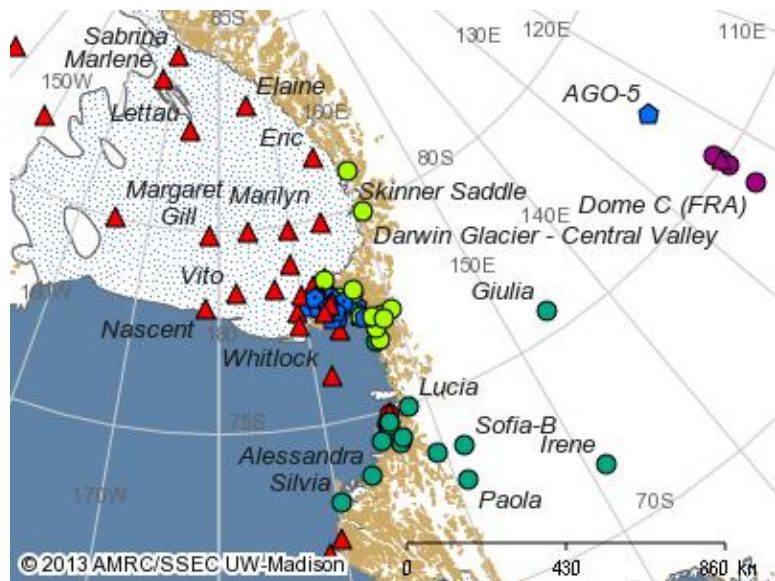


VENTO AREA BOULDER: WSW 12 KT (06:10 loc time recorded)

Automatic Weather Stations (AWS) Updates

| AWS | Datetime UTC | Wind Direction [°] | Wind Speed [kts] | Wind Gust [kts] | Temperature [°C] | MAX_Temp [°C] | MIN_Temp [°C] | Humidity [%] | Pressure [hPa] |
|------------|------------------|--------------------|------------------|-----------------|------------------|---------------|---------------|--------------|----------------|
| Alessandra | 2018-01-16 16:00 | 40 | 1 | 3 | -3.4 | -2.9 | -3.6 | 79 | 955.4 |
| Arelis | 2018-01-16 16:00 | 150 | 8 | 11 | -4.6 | -4.5 | -4.8 | 11 | 957.1 |
| Concordia | 2018-01-16 16:00 | 140 | 3 | 6 | -26.0 | -25.2 | -26.2 | 77 | 641.0 |
| Eneide | 2018-01-16 16:00 | 240 | 1 | 3 | -3.4 | -2.8 | -3.5 | 77 | 964.8 |
| Giulia | 2018-01-16 16:00 | 210 | 10 | 14 | -31.2 | -30.4 | -31.8 | 72 | 706.2 |
| Lola | 2018-01-16 16:00 | 90 | 3 | 7 | -14.7 | -12.6 | -15.1 | 50 | 791.3 |
| Modesta | 2018-01-16 16:00 | 310 | 10 | 14 | -24.0 | // | -24.6 | 75 | 755.6 |
| Paola | 2018-01-07 14:00 | 80 | 6 | 7 | -21.6 | -21.3 | -22.2 | 82 | // |
| Rita | 2018-01-16 16:00 | 260 | 9 | 11 | -5.0 | -4.2 | -5.1 | 85 | 943.8 |
| Silvia | 2018-01-16 16:00 | 250 | 3 | 3 | -5.3 | -5.3 | -5.5 | // | 910.9 |
| Sofiab | 2018-01-16 16:00 | 160 | 7 | 13 | -15.5 | -15.3 | -15.8 | 72 | 797.9 |
| Zoraida | 2018-01-16 16:00 | 290 | 23 | 29 | -11.2 | -10.4 | -11.4 | 60 | 873.1 |

N.B. I dati presenti non sono validati e quindi non adatti ad un uso operativo.



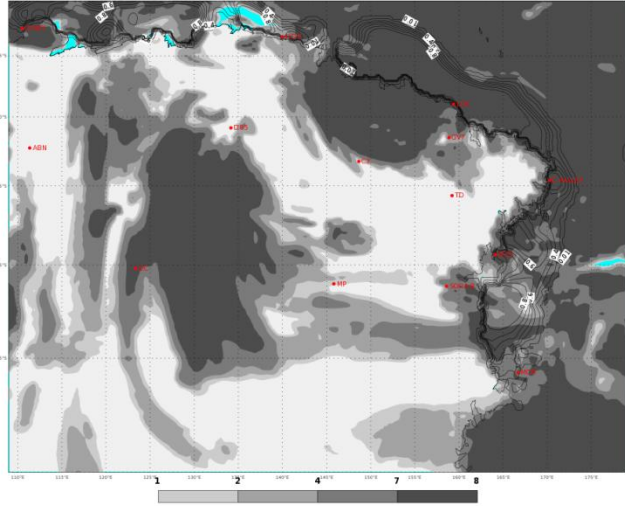
[Indietro all'indice – back to index](#)

PREVISIONI - FORECASTS

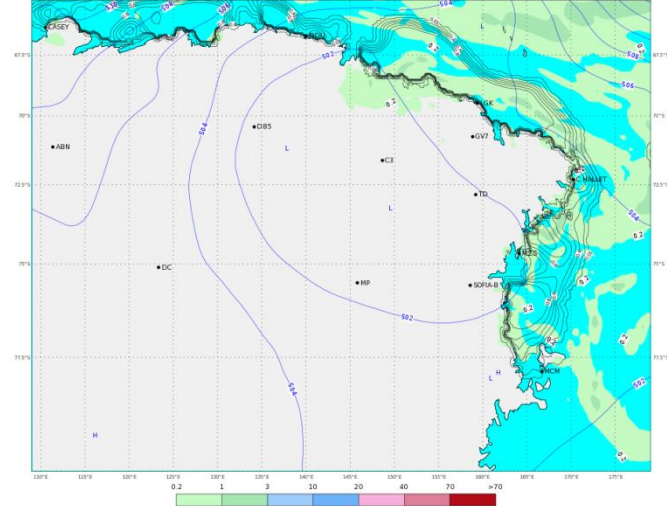
OGGI - ORE 07 LT

TODAY - 07 LT

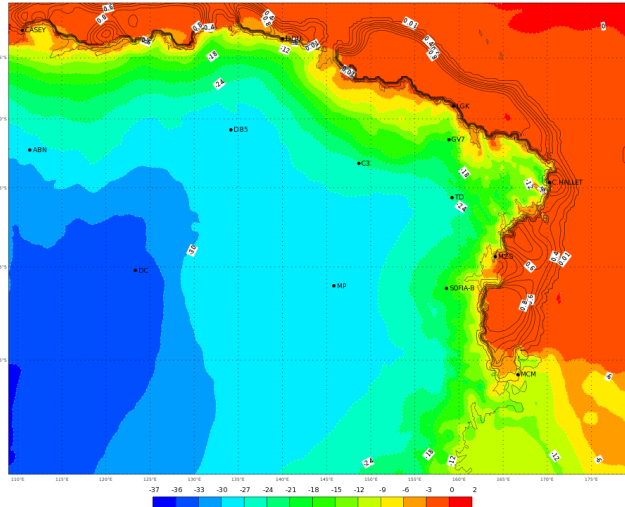
ECMWF 16 Gennaio 2018 00UTC Forecast T+18 VT: Martedì 16 Gennaio 2018 18UTC
Terra Vittoria - Total cloud cover (oct)



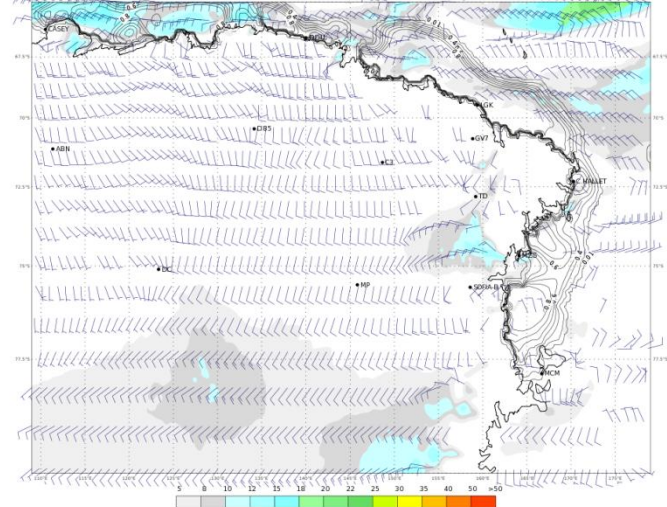
ECMWF 16 Gennaio 2018 00UTC Forecast T+18 VT: Martedì 16 Gennaio 2018 18UTC
Terra Vittoria - Geopotential at 500 hPa + 6h accumulated precipitation (mm)



ECMWF 16 Gennaio 2018 00UTC Forecast T+18 VT: Martedì 16 Gennaio 2018 18UTC
Terra Vittoria - Temperature at 2 m (°C)



ECMWF 16 Gennaio 2018 00UTC Forecast T+18 VT: Martedì 16 Gennaio 2018 18UTC
Terra Vittoria - Wind at 10 m (kts)

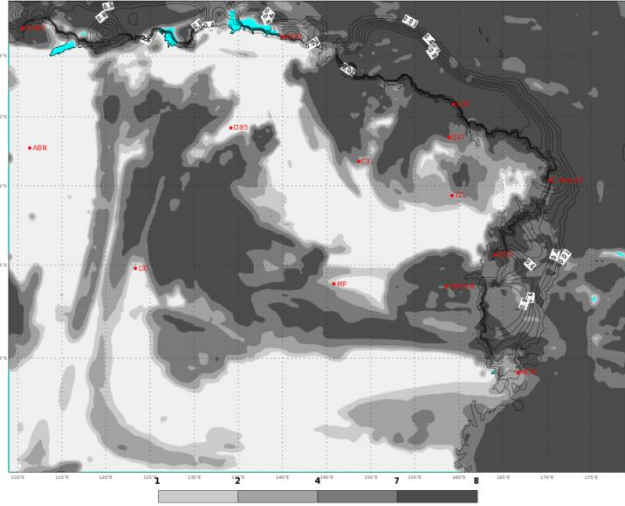


PREVISIONI - FORECASTS

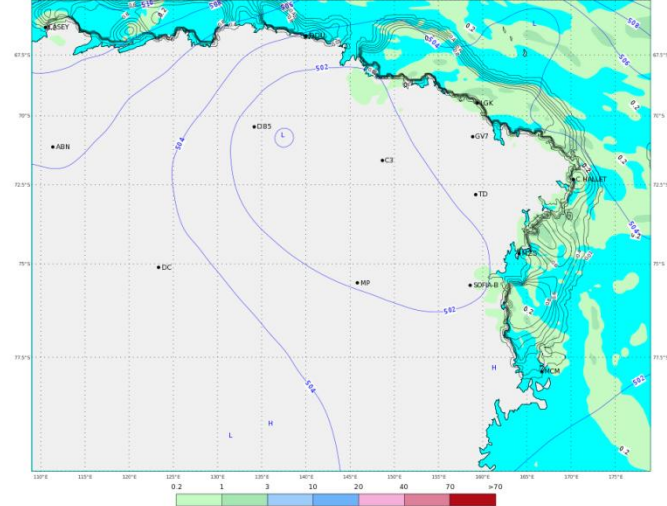
OGGI - ORE 13 LT

TODAY - 13 LT

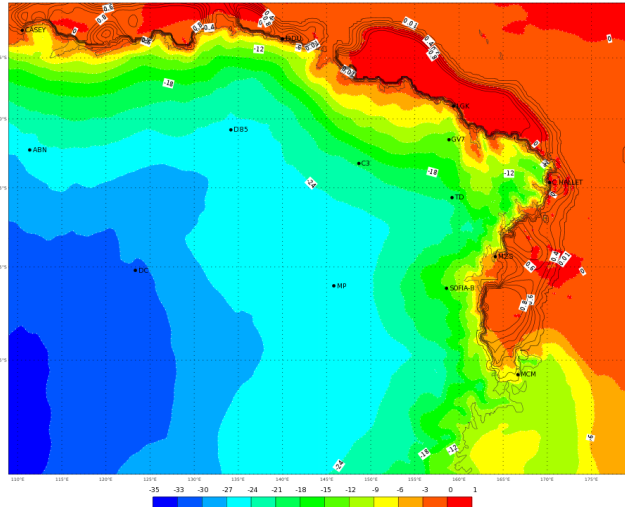
ECMWF 16 Gennaio 2018 00UTC Forecast T+24 VT: Mercoledì 17 Gennaio 2018 00UTC
Terra Vittoria - Total cloud cover (oct)



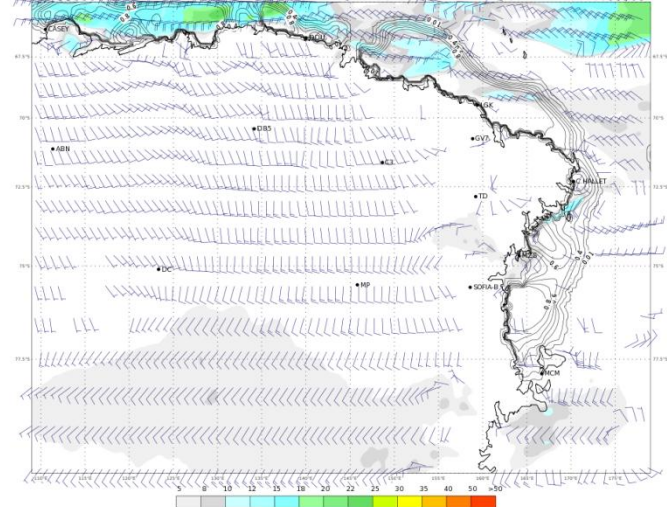
ECMWF 16 Gennaio 2018 00UTC Forecast T+24 VT: Mercoledì 17 Gennaio 2018 00UTC
Terra Vittoria - Geopotential at 500 hPa + 6h accumulated precipitation (mm)



ECMWF 16 Gennaio 2018 00UTC Forecast T+24 VT: Mercoledì 17 Gennaio 2018 00UTC
Terra Vittoria - temperature at 2 m (°C)



ECMWF 16 Gennaio 2018 00UTC Forecast T+24 VT: Mercoledì 17 Gennaio 2018 00UTC
Terra Vittoria - Wind at 10 m (kts)

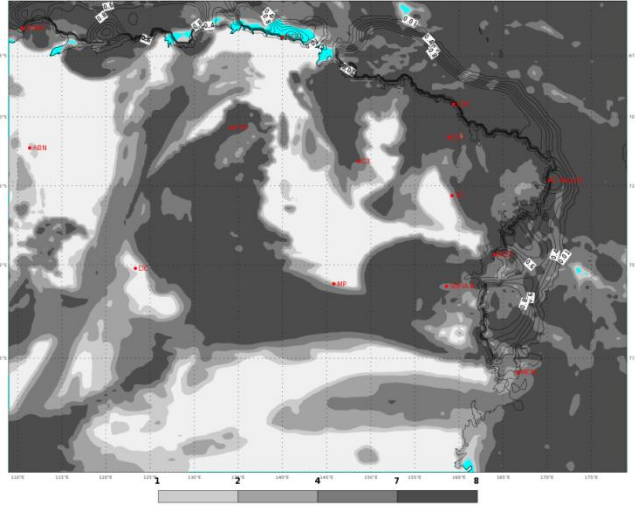


PREVISIONI - FORECASTS

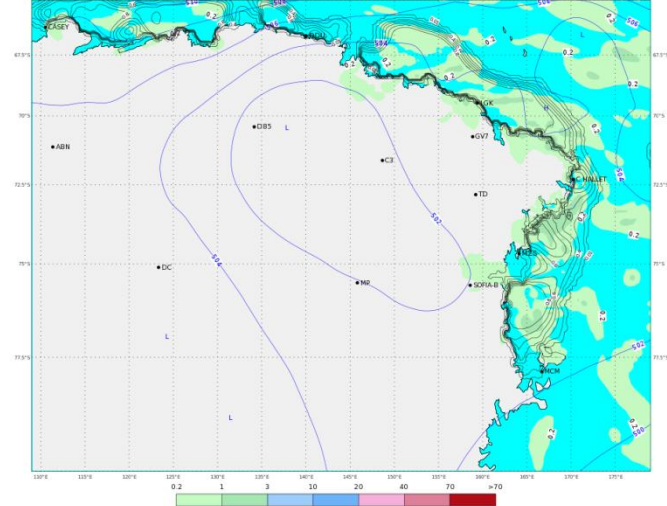
OGGI - ORE 19 LT

TODAY - 19 LT

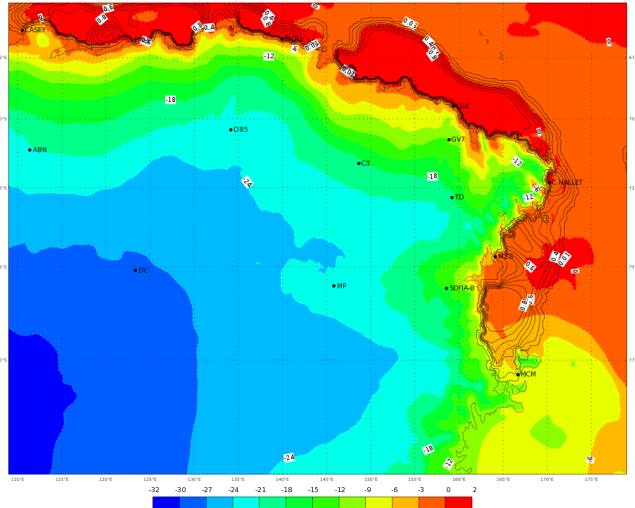
ECMWF 16 Gennaio 2018 00UTC Forecast T+30 VT: Mercoledì 17 Gennaio 2018 06UTC
Terra Vittoria - Total cloud cover (oct)



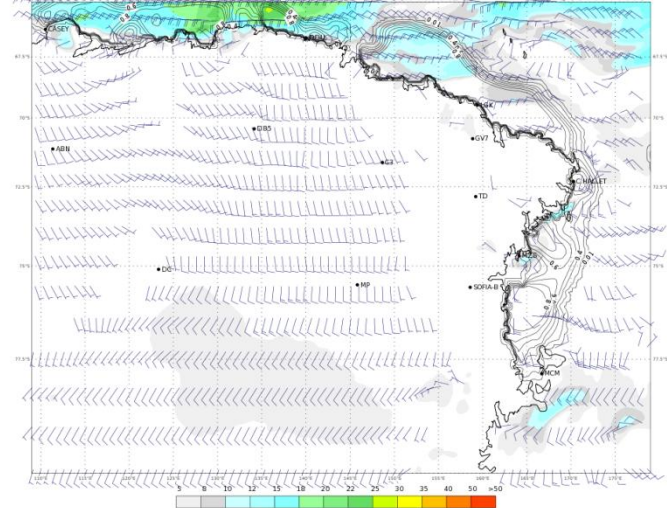
ECMWF 16 Gennaio 2018 00UTC Forecast T+30 VT: Mercoledì 17 Gennaio 2018 06UTC
Terra Vittoria - Geopotential at 500 hPa + 6h accumulated precipitation (mm)



ECMWF 16 Gennaio 2018 00UTC Forecast T+30 VT: Mercoledì 17 Gennaio 2018 06UTC
Terra Vittoria - Temperature at 2 m (°C)






ECMWF 16 Gennaio 2018 00UTC Forecast T+30 VT: Mercoledì 17 Gennaio 2018 06UTC
Terra Vittoria - Wind at 10 m (kts)



WEATHER FORECAST FOR TODAY AT TERRA NOVA BAY

Wednesday 17/01/2018

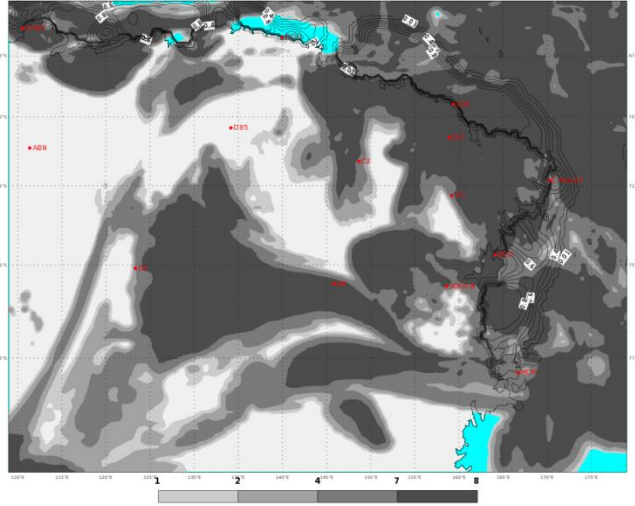
| | ORE 07 | ORE 13 | ORE 19 |
|------------------|---|---|---|
| CIELO |  |  |  |
| FENOMENI | NIL | NIL | NIL |
| VENTO MZS | VRB 05 KT | VRB 05 KT | WNW 05/10 KT |
| VENTO BOULDER | VRB 07 KT | VRB 07 KT | WNW 10/15 KT |
| TEMPERATURA [°C] | -05/-03 °C | -04/-02 °C | -03/-01 °C |
| WIND CHILL [°C] | -09/-06 °C | -08/-05 °C | -09/-06 °C |
| AVVISI | NIL | NIL | NIL |

PREVISIONI - FORECASTS

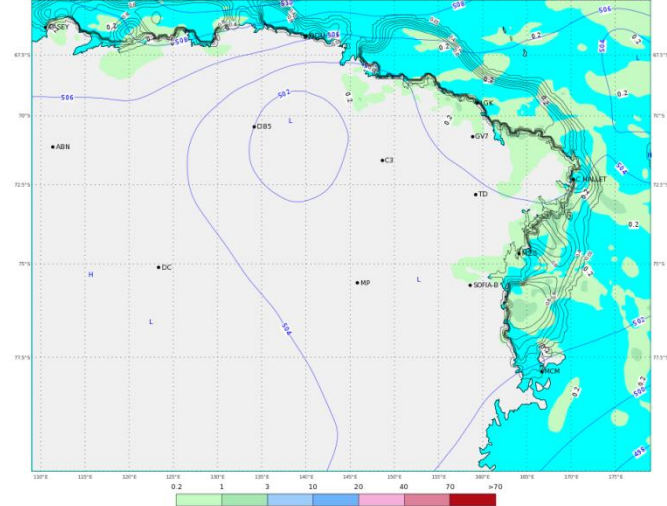
DOMANI - ORE 01 LT

TOMORROW - 01 LT

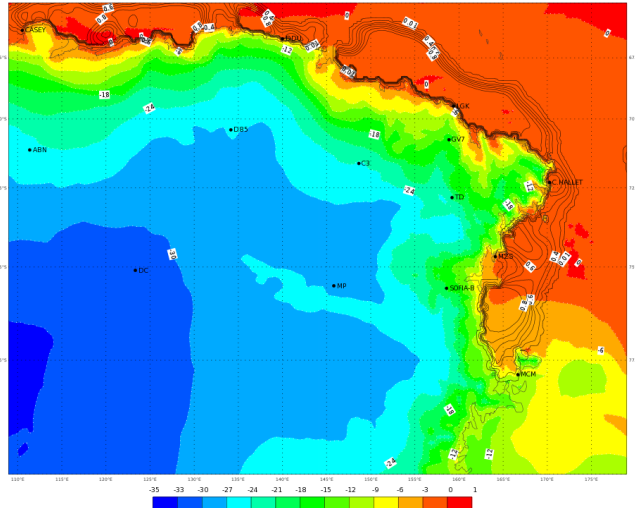
ECMWF 16 Gennaio 2018 00UTC Forecast T+36 VT: Mercoledì 17 Gennaio 2018 12UTC
Terra Vittoria - Total cloud cover (oct)



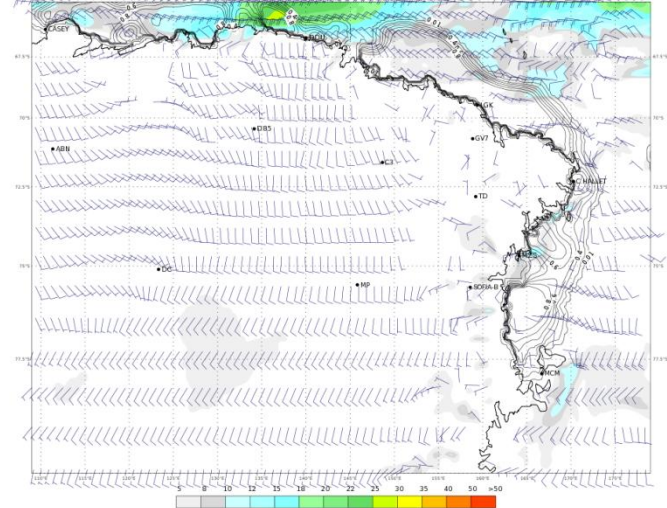
ECMWF 16 Gennaio 2018 00UTC Forecast T+36 VT: Mercoledì 17 Gennaio 2018 12UTC
Terra Vittoria - Geopotential at 500 hPa + 6h accumulated precipitation (mm)



ECMWF 16 Gennaio 2018 00UTC Forecast T+36 VT: Mercoledì 17 Gennaio 2018 12UTC
Terra Vittoria - Temperature at 2 m (°C)



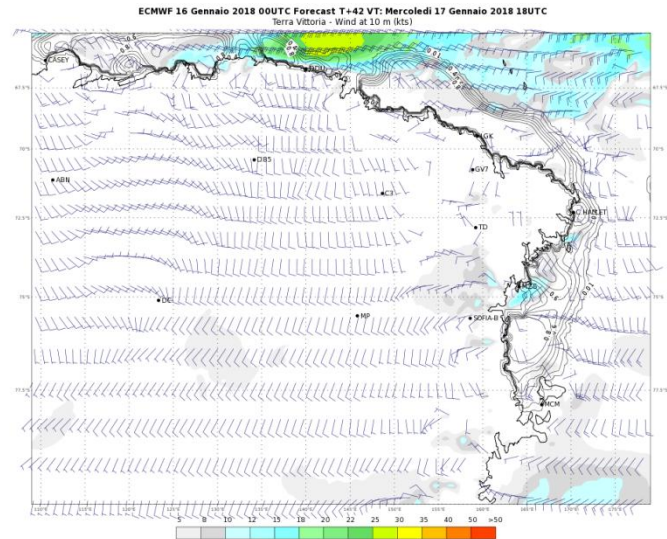
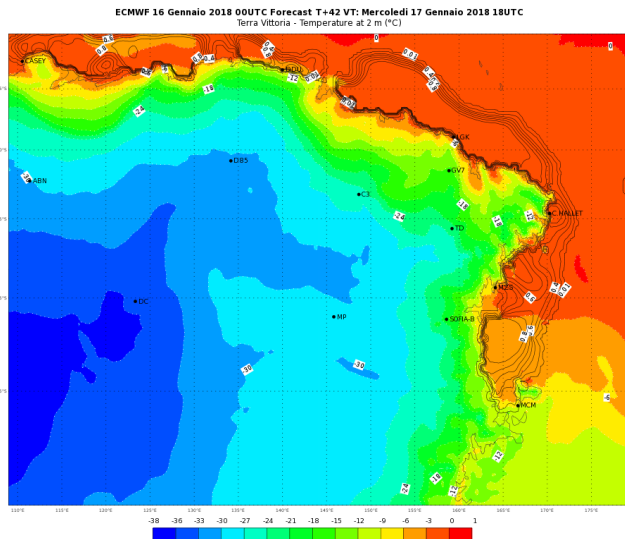
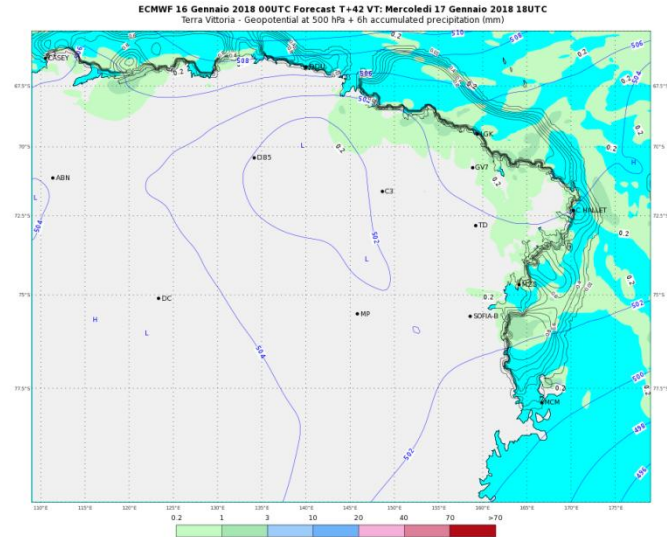
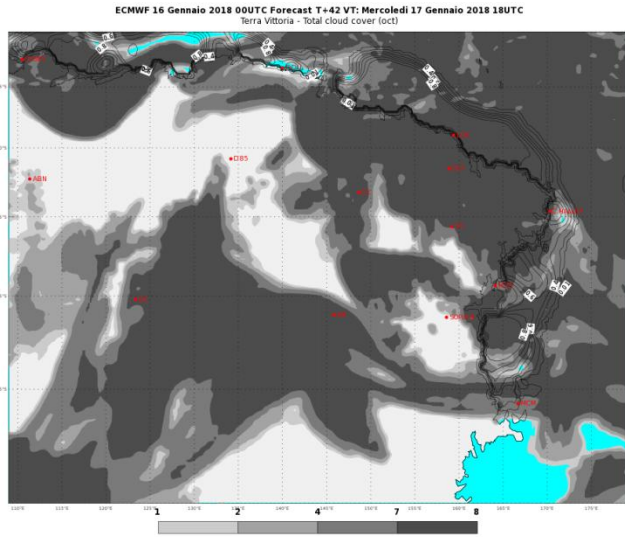
ECMWF 16 Gennaio 2018 00UTC Forecast T+36 VT: Mercoledì 17 Gennaio 2018 12UTC
Terra Vittoria - Wind at 10 m (kts)



PREVISIONI - FORECASTS

DOMANI - ORE 07 LT

TOMORROW - 07 LT

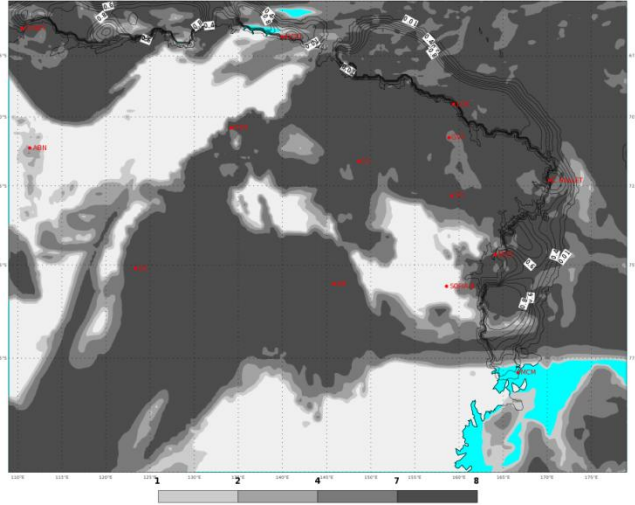


PREVISIONI - FORECASTS

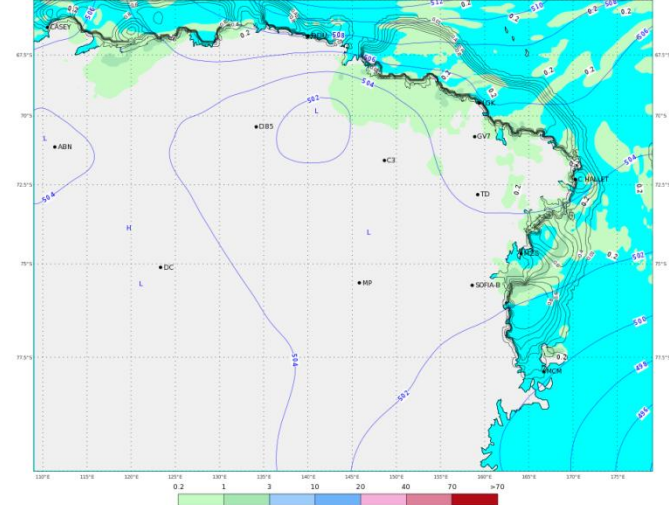
DOMANI - ORE 13 LT

TOMORROW - 13 LT

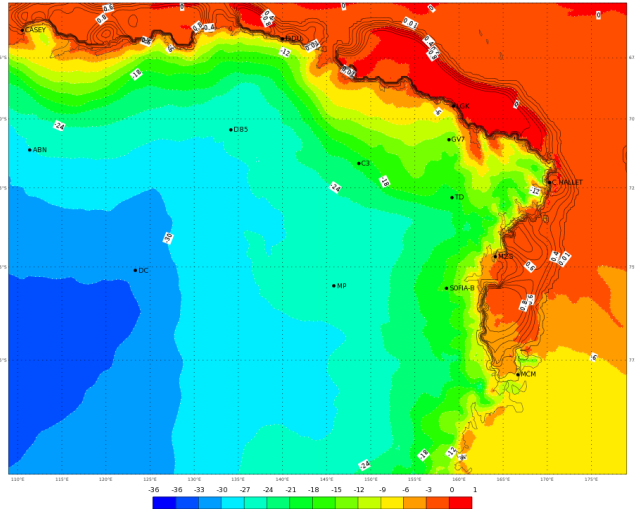
ECMWF 16 Gennaio 2018 00UTC Forecast T+48 VT: Giovedì 18 Gennaio 2018 00UTC
Terra Vittoria - Total cloud cover (oct)



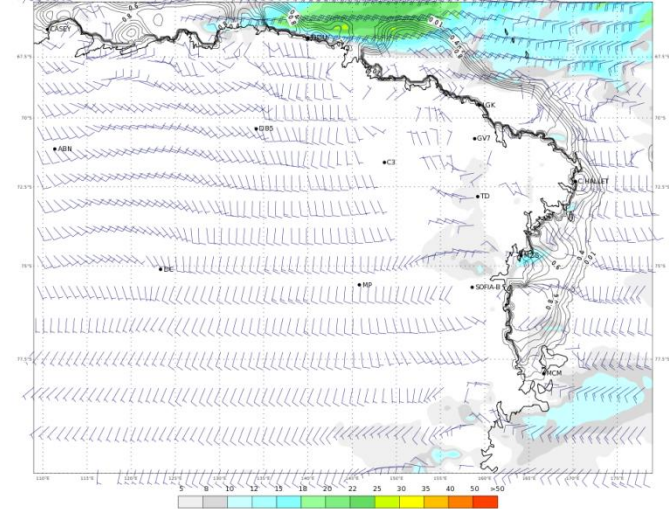
ECMWF 16 Gennaio 2018 00UTC Forecast T+48 VT: Giovedì 18 Gennaio 2018 00UTC
Terra Vittoria - Geopotential at 500 hPa + 6h accumulated precipitation (mm)



ECMWF 16 Gennaio 2018 00UTC Forecast T+48 VT: Giovedì 18 Gennaio 2018 00UTC
Terra Vittoria - Temperature at 2 m (°C)



ECMWF 16 Gennaio 2018 00UTC Forecast T+48 VT: Giovedì 18 Gennaio 2018 00UTC
Terra Vittoria - Wind at 10 m (kts)

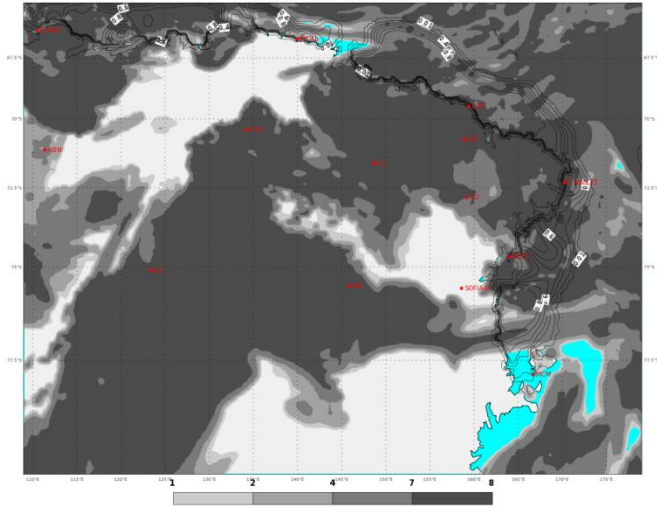


PREVISIONI - FORECASTS

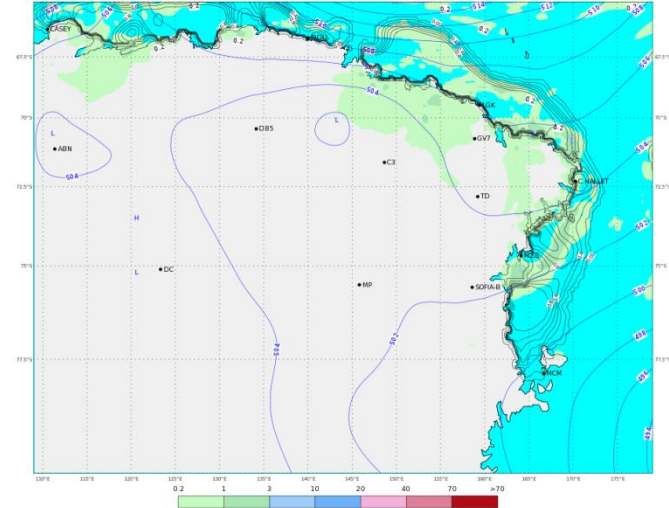
DOMANI - ORE 19 LT

TOMORROW - 19 LT

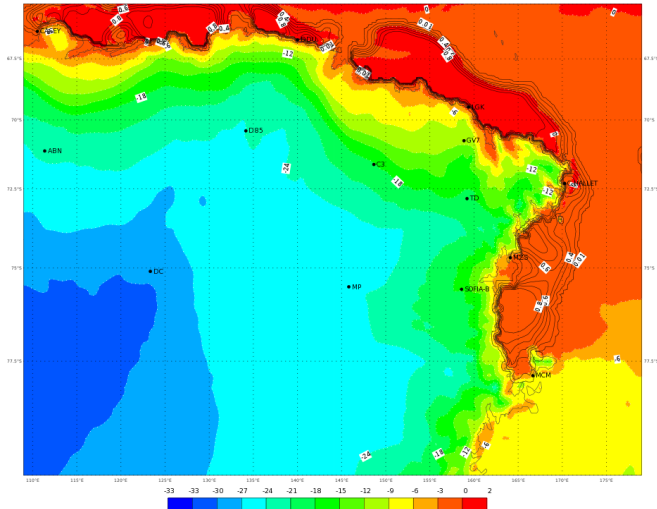
ECMWF 16 Gennaio 2018 00UTC Forecast T+54 VT: Giovedì 18 Gennaio 2018 06UTC
Terra Vittoria - Total cloud cover (oct)



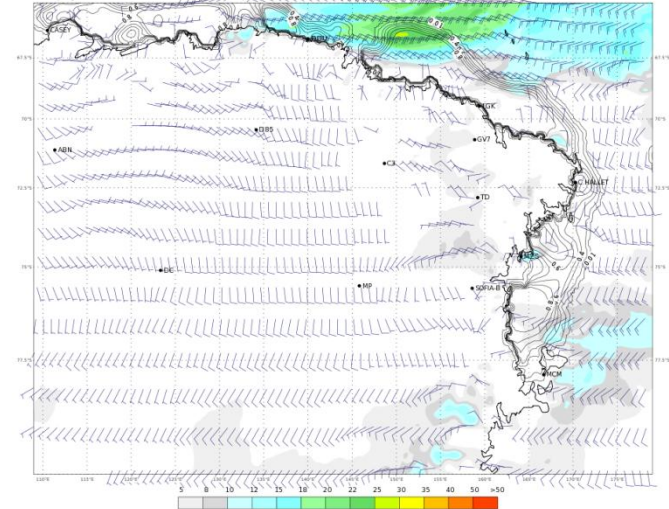
ECMWF 16 Gennaio 2018 00UTC Forecast T+54 VT: Giovedì 18 Gennaio 2018 06UTC
Terra Vittoria - Geopotential at 500 hPa + 6h accumulated precipitation (mm)



ECMWF 16 Gennaio 2018 00UTC Forecast T+54 VT: Giovedì 18 Gennaio 2018 06UTC
Terra Vittoria - Temperature at 2 m (°C)






ECMWF 16 Gennaio 2018 00UTC Forecast T+54 VT: Giovedì 18 Gennaio 2018 06UTC
Terra Vittoria - Wind at 10 m (kts)



WEATHER FORECAST FOR TOMORROW AT TERRA NOVA BAY

Thursday 18/01/2018



| | ORE 07 | ORE 13 | ORE 19 |
|------------------|---|---|---|
| CIELO |  |  |  |
| FENOMENI | NIL | NIL | NIL |
| VENTO MZS | WNW 05/10 KT | WSW 05/10 KT | WNW 05/10 KT |
| VENTO BOULDER | WNW 10/15 KT | WSW 10/15 KT | WNW 10/15 KT |
| TEMPERATURA [°C] | -05/-03 °C | -04/-02 °C | -04/-02 °C |
| WIND CHILL [°C] | -12/-09 °C | -11/-08 °C | -11/-08 °C |
| AVVISI | NIL | NIL | NIL |

http://mzs-pdc.mzs.pnra.it/meteo/bollettino_meteo.pdf

[Indietro all'indice – back to index](#)

WEATHER TENDENCY AT TERRA NOVA BAY

Friday 19/01/2018

| | MATTINO | POMERIGGIO |
|------------------|--|---|
| CIELO |  |  |
| FENOMENI | NIL | NIL |
| VENTO MZS | WNW 05/10 KT | VRB 05 KT |
| VENTO BOULDER | WNW 10/15 KT | VRB 07 KT |
| TEMPERATURA [°C] | -05/-03 °C | -03/-01 °C |
| WIND CHILL [°C] | -11/-08 °C | -07/-04 °C |
| AVVISI | NIL | NIL |

http://mzs-pdc.mzs.pnra.it/meteo/bollettino_meteo.pdf

[Indietro all'indice – back to index](#)



Extreme Values of Yesterday

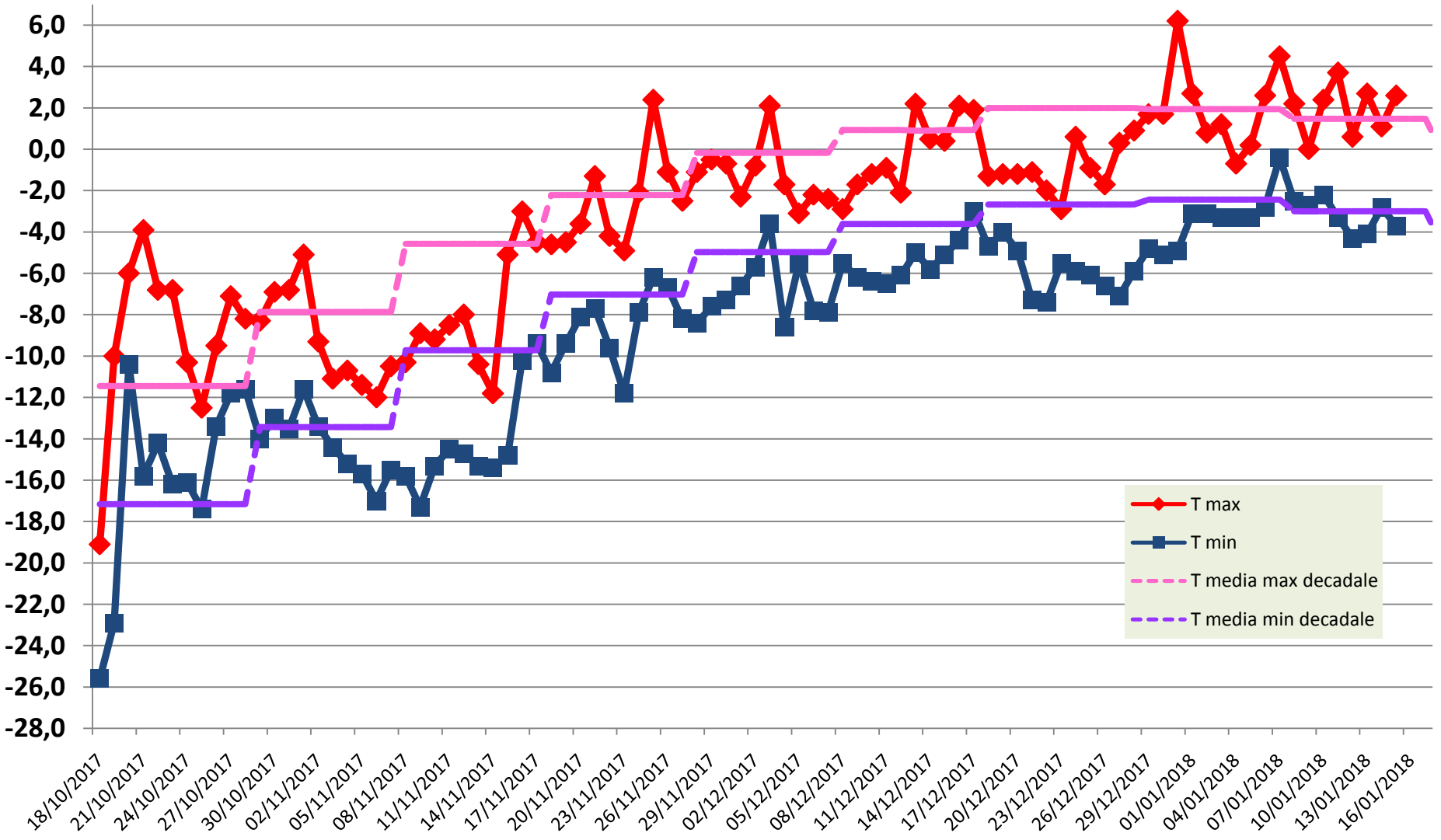


| 16/01/2018 UTC time (13:00 15/01 - 13:00 16/01) | | |
|--|----------------------|--------------------|
| MAX temperature | (ore 16:42/L) | 2.6°C |
| MIN temperature | (ore 03:36/L) | -3.7 °C |
| MAX humidity | (ore 03:37/L) | 97 % |
| MIN humidity | (ore 21:16/L) | 46 % |
| MAX wind direction/speed | (ore 00:02/L) | 208/19.1 KT |

Remark: *the reported values are referred to the previous day in terms of Universal Time and not in local time (UTC+13).*

Temperature measured during the XXXIII Expedition

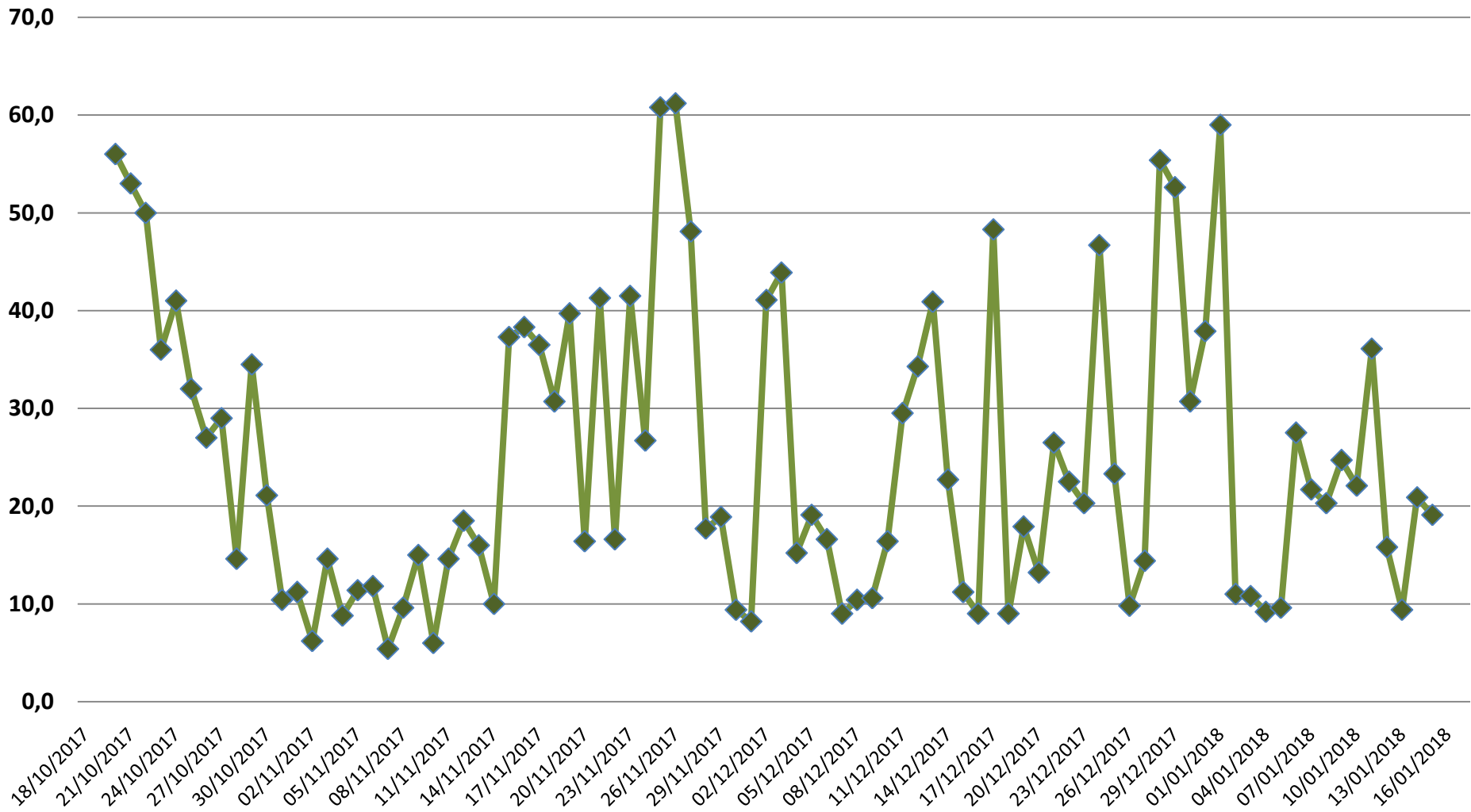
ENEIDE weather station (MZS) - Antarctic Climatology Observatory





MAX wind [kt] measured during the XXXIII Expedition

ENEIDE weather station (MZS) - Antarctic Climatology Observatory



**Per ulteriori informazioni contattare
l'Ufficio Meteorologico di MZS
int. 510**

**For further information please contact
MZS Met Office
ext. 510**

AVVERTENZA/WARNING

*Le presenti informazioni NON sono destinate alla pianificazione di volo e/o pre-volo
The informations here presented are NOT intended for flight planning and/or pre-flight*

[Indietro all'indice – back to index](#)