



# WEATHER

*Meteorological observations and forecasts*

**Tuesday 23/01/2018**

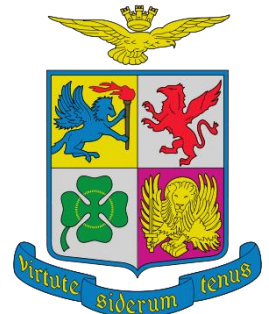
*MET Office - "Mario Zucchelli" Base - Terranova Bay*

Ten. Col. Luigi Verzelletti  
Cap. Francesco Mariella



Agenzia nazionale per le nuove tecnologie,  
l'energia e lo sviluppo economico sostenibile

*Information NOT intended for flight planning and pre-flight*



# Indice dei contenuti    Table of Contents

*Puoi saltare direttamente sull'argomento di interesse cliccandoci sopra*

*Jump directly to the issue of your interest just clicking on it*

1. [Situazione – Situation](#)
2. [Ultime Misure delle Stazioni Meteo Automatiche - Last Measurements from Automatic Weather Stations](#)
3. [Dati attuali a MZS – Current data at MZS \(ENEIDE – ‘Campo Meteo’\)](#)
4. [Mappe di previsione: oggi ore 07/L – Forecast Maps: today 07/L](#)
5. [Mappe di previsione: oggi ore 13/L – Forecast Maps: today 13/L](#)
6. [Mappe di previsione: oggi ore 19/L – Forecast Maps: today 19/L](#)
7. [Tempo previsto oggi a Baia Terra Nova – Weather Forecast for today at Terra Nova Bay](#)
8. [Mappe di previsione: domani ore 01/L – Forecast Maps: tomorrow 01/L](#)
9. [Mappe di previsione: domani ore 07/L – Forecast Maps: tomorrow 07/L](#)
10. [Mappe di previsione: domani ore 13/L – Forecast Maps: tomorrow 13/L](#)
11. [Mappe di previsione: domani ore 19/L – Forecast Maps: tomorrow 19/L](#)
12. [Tempo previsto domani a Baia Terra Nova – Weather Forecast for tomorrow at Terra Nova Bay](#)
13. [Tendenza per dopodomani a Baia Terra Nova – Weather Tendency for the day after tomorrow at Terra Nova Bay](#)
14. [Valori estremi di ieri – Extreme Values of Yesterday](#)
15. [Andamento delle Temperature durante la Spedizione](#)
16. [Andamento del vento massimo durante la Spedizione](#)
17. [Contatti - Contacts](#)



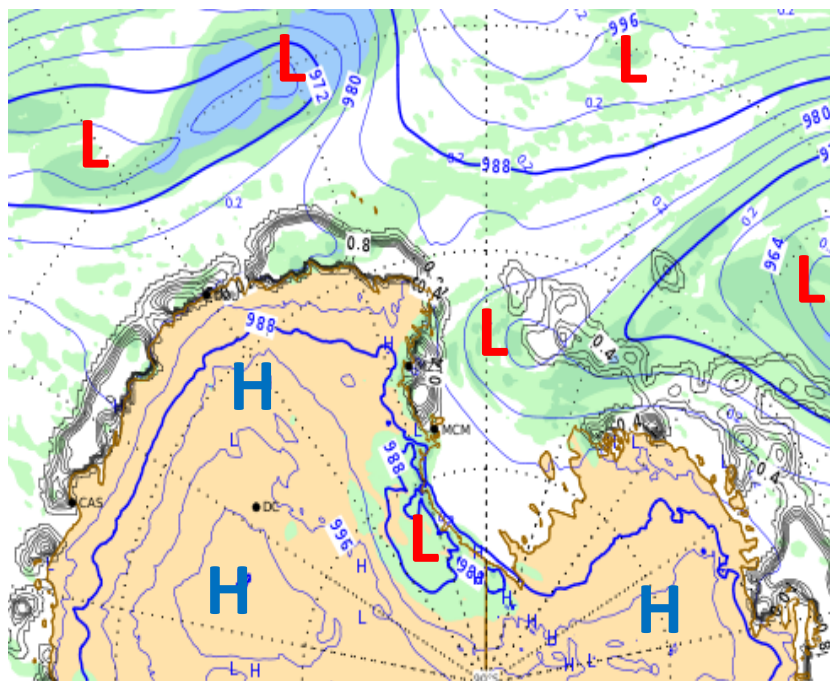
# WEATHER

Meteorological observations and forecasts



## Tuesday 23/01/2018

Sea Level Pressure + Precipitation at 07:00



Latest Report

### MARIO ZUCHELLI Station

2018-01-22 17:15:00 UTC (74° 41' 45.3" S, 164° 05' 31.8" E)  
<http://www.climantartide.it>

	Pressure (mba)	975.2
	Temperature (C°)	-2.1
	Wind Speed (knt)	8.2
	Relative Humidity (%)	87
	Sun Radiation (W/m <sup>2</sup> )	109

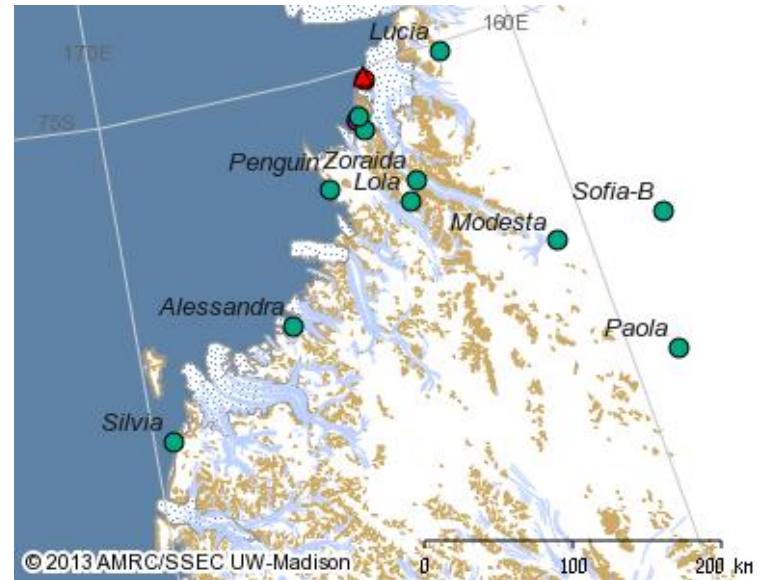
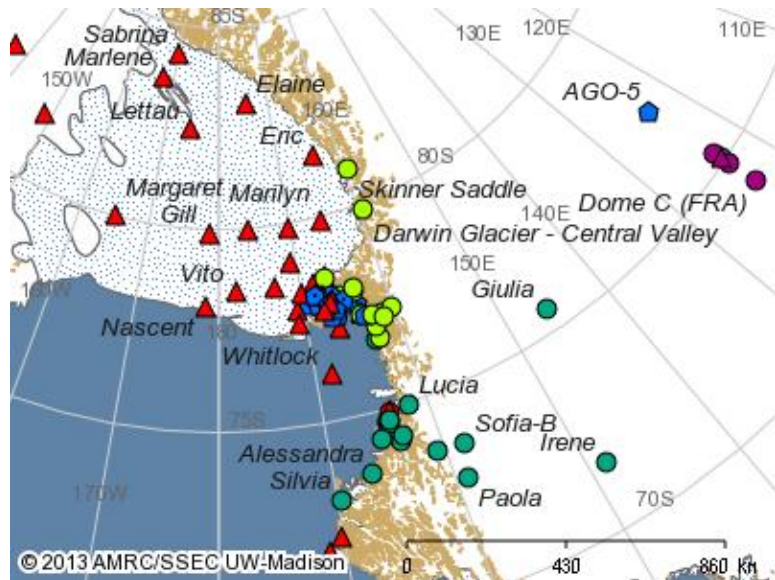
231°

**VENTO AREA BOULDER: SW 12 KT (06:15 loc time recorded)**

# Automatic Weather Stations (AWS) Updates

AWS	Datetime UTC	Wind Direction [°]	Wind Speed [kts]	Wind Gust [kts]	Temperature [°C]	MAX_Temp [°C]	MIN_Temp [°C]	Humidity [%]	Pressure [hPa]
Alessandra	2018-01-22 16:00	210	1	11	-3.1	-2.7	-3.2	94	965.6
Arelis	2018-01-22 16:00	180	11	12	-3.8	-3.5	-3.8	11	967.0
Concordia	2018-01-22 16:00	90	5	7	-35.1	-35.1	-37.2	68	645.4
Eneide	2018-01-22 16:00	230	14	20	-2.7	-2.2	-2.7	92	974.8
Giulia	2018-01-22 16:00	170	5	9	-27.7	-27.7	-29.2	76	713.6
Lola	2018-01-22 16:00	220	9	14	-13.9	-13.7	-13.9	87	800.2
Modesta	2018-01-22 15:00	290	7	10	-30.9	-30.8	-32.2	74	763.0
Paola	2018-01-07 14:00	80	6	7	-21.6	-21.3	-22.2	82	//
Rita	2018-01-22 16:00	240	14	21	-4.3	-4.3	-4.5	99	953.6
Silvia	2018-01-22 16:00	230	15	18	-6.5	-6.3	-6.6	//	919.2
Sofiab	2018-01-22 16:00	190	6	15	-16.6	-15.6	-16.9	80	807.2
Zoraida	2018-01-22 15:00	320	13	17	-10.4	-9.5	-10.5	79	883.6

N.B. I dati presenti non sono validati e quindi non adatti ad un uso operativo.



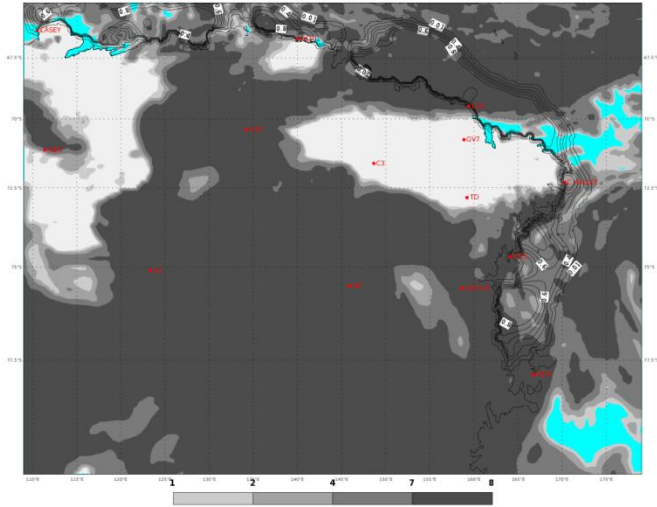
[Indietro all'indice – back to index](#)

# PREVISIONI - FORECASTS

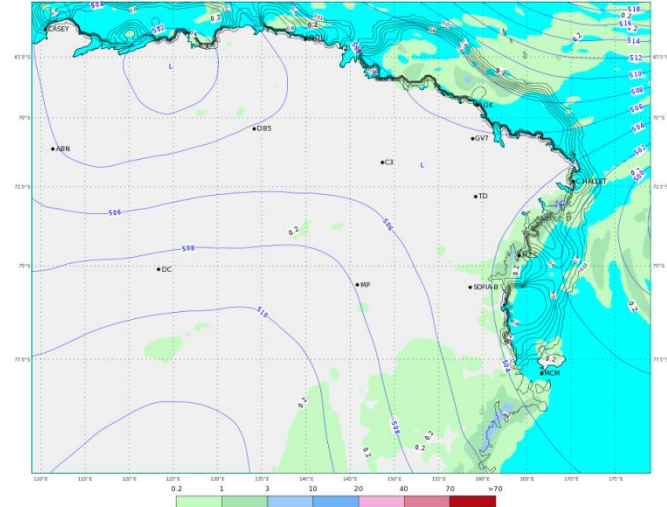
OGGI - ORE 07 LT

TODAY - 07 LT

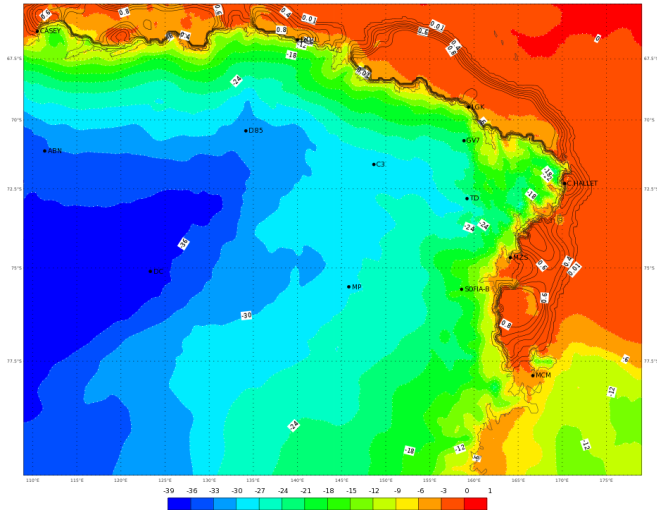
ECMWF 22 Gennaio 2018 00UTC Forecast T+18 VT: Lunedì 22 Gennaio 2018 18UTC  
Terra Vittoria - Total cloud cover (oct)



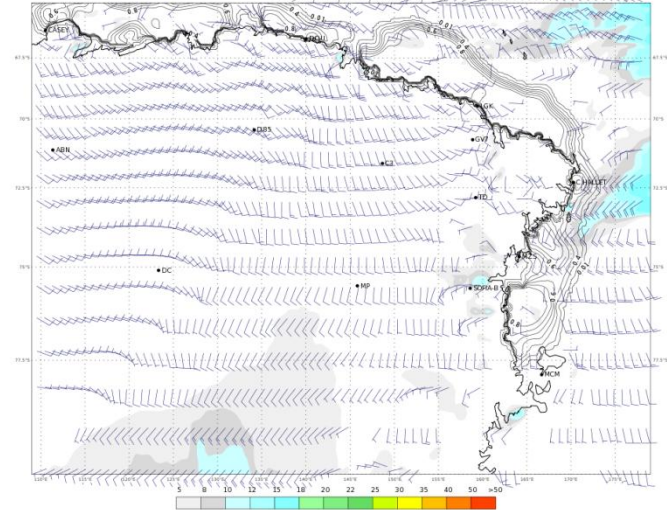
ECMWF 22 Gennaio 2018 00UTC Forecast T+18 VT: Lunedì 22 Gennaio 2018 18UTC  
Terra Vittoria - Geopotential at 500 hPa + 6h accumulated precipitation (mm)



ECMWF 22 Gennaio 2018 00UTC Forecast T+18 VT: Lunedì 22 Gennaio 2018 18UTC  
Terra Vittoria - temperature at 2 m (°C)



ECMWF 22 Gennaio 2018 00UTC Forecast T+18 VT: Lunedì 22 Gennaio 2018 18UTC  
Terra Vittoria - Wind at 10 m (kts)

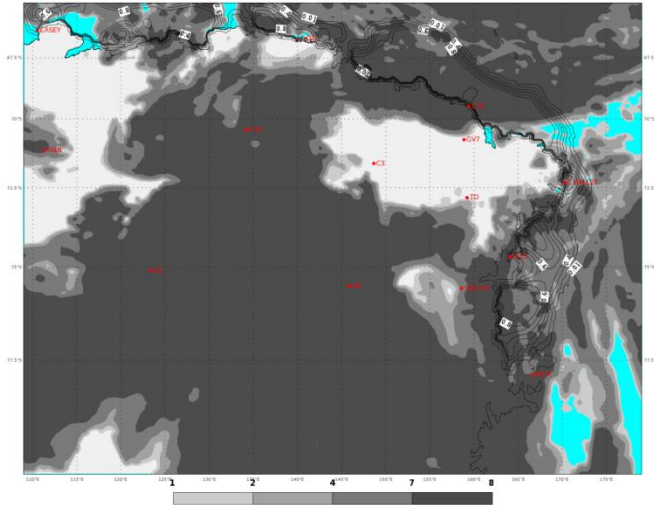


# PREVISIONI - FORECASTS

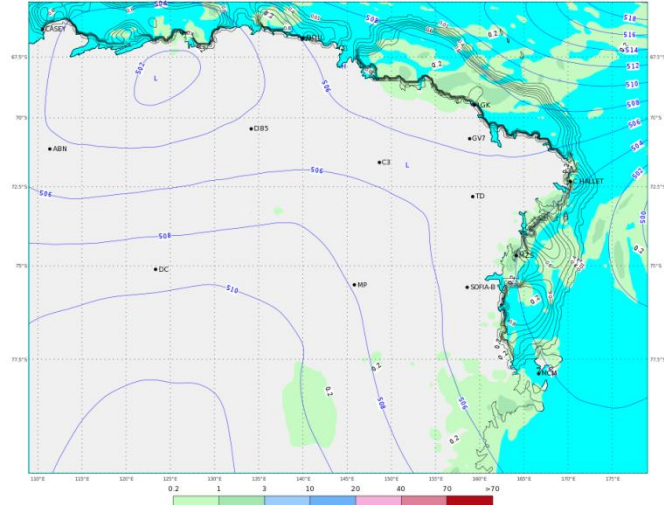
## OGGI - ORE 13 LT

## TODAY - 13 LT

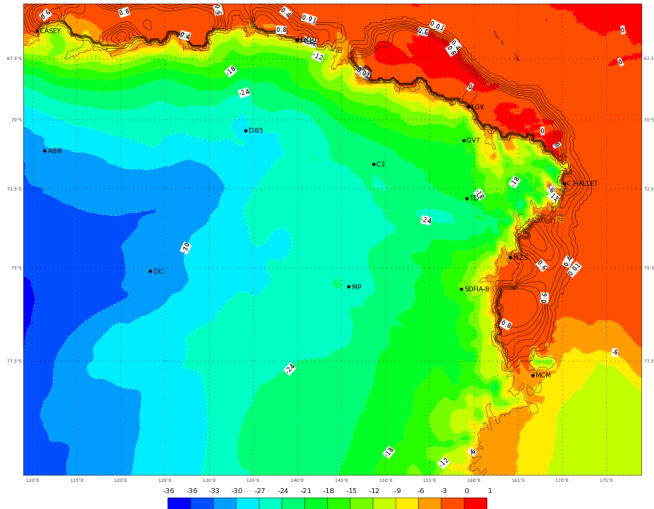
ECMWF 22 Gennaio 2018 00UTC Forecast T+24 VT: Martedì 23 Gennaio 2018 00UTC  
Terra Vittoria - Total cloud cover (oct)



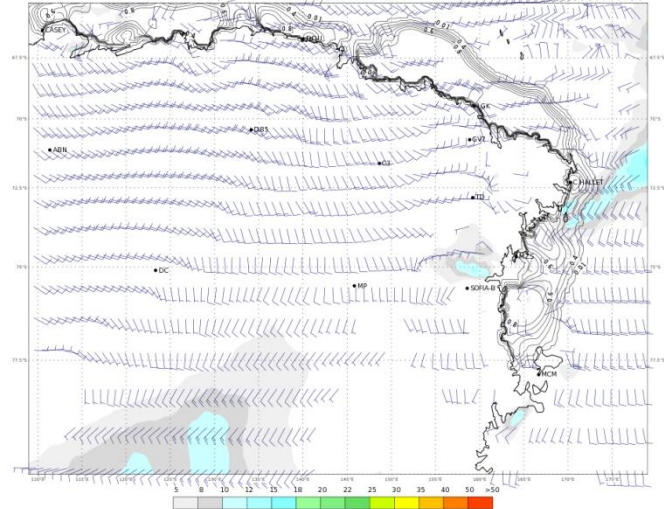
ECMWF 22 Gennaio 2018 00UTC Forecast T+24 VT: Martedì 23 Gennaio 2018 00UTC  
Terra Vittoria - Geopotential at 500 hPa + 6h accumulated precipitation (mm)



ECMWF 22 Gennaio 2018 00UTC Forecast T+24 VT: Martedì 23 Gennaio 2018 00UTC  
Terra Vittoria - Temperature at 2 m (°C)



ECMWF 22 Gennaio 2018 00UTC Forecast T+24 VT: Martedì 23 Gennaio 2018 00UTC  
Terra Vittoria - Wind at 10 m (kts)

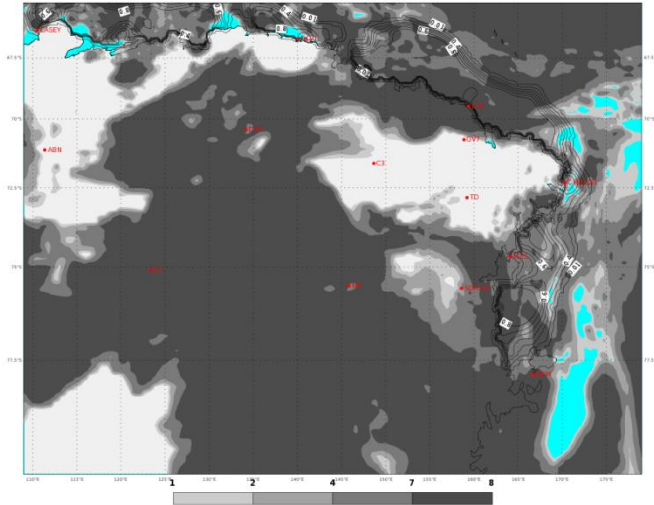


# PREVISIONI - FORECASTS

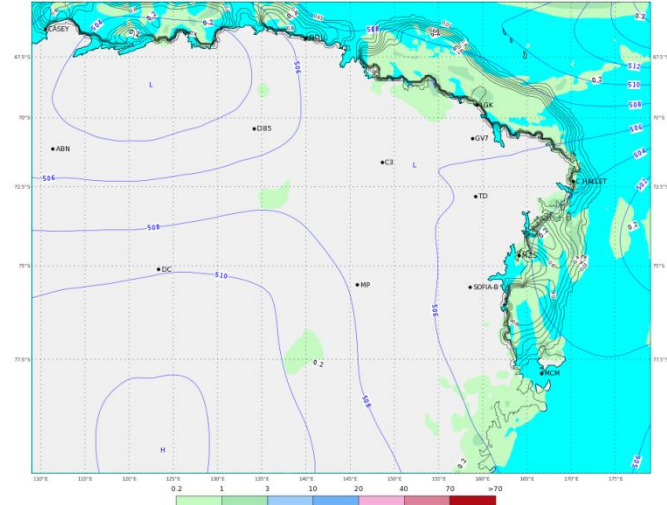
## OGGI - ORE 19 LT

## TODAY - 19 LT

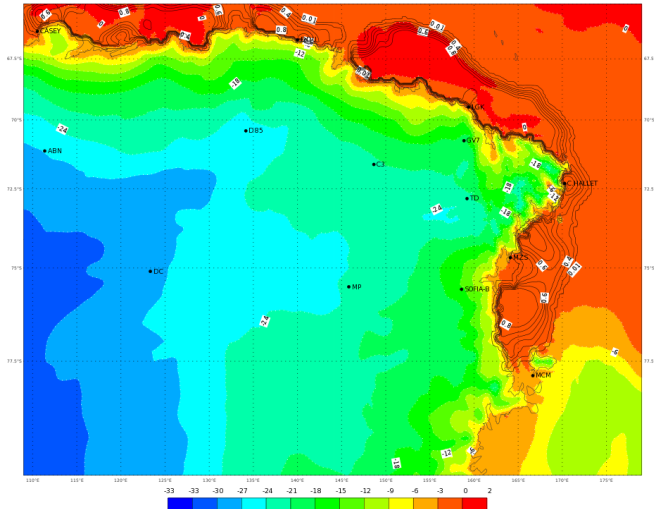
ECMWF 22 Gennaio 2018 00UTC Forecast T+30 VT: Martedì 23 Gennaio 2018 06UTC  
Terra Vittoria - Total cloud cover (oct)



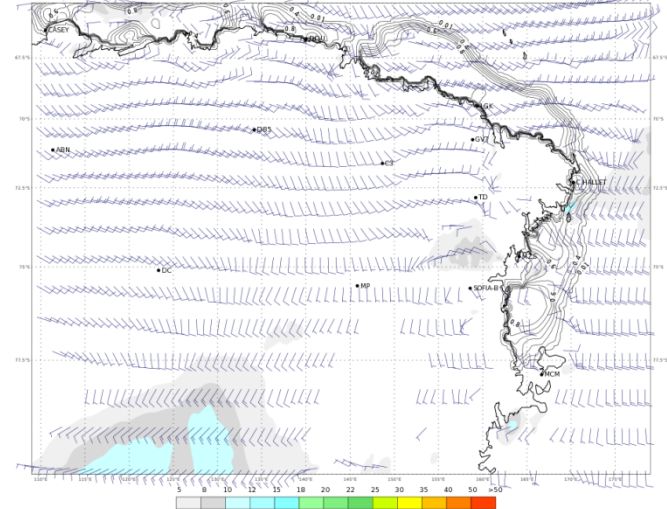
ECMWF 22 Gennaio 2018 00UTC Forecast T+30 VT: Martedì 23 Gennaio 2018 06UTC  
Terra Vittoria - Geopotential at 500 hPa + 6h accumulated precipitation (mm)



ECMWF 22 Gennaio 2018 00UTC Forecast T+30 VT: Martedì 23 Gennaio 2018 06UTC  
Terra Vittoria - Temperature at 2 m (°C)






ECMWF 22 Gennaio 2018 00UTC Forecast T+30 VT: Martedì 23 Gennaio 2018 06UTC  
Terra Vittoria - Wind at 10 m (kts)



# WEATHER FORECAST FOR TODAY AT TERRA NOVA BAY

## Tuesday 23/01/2018

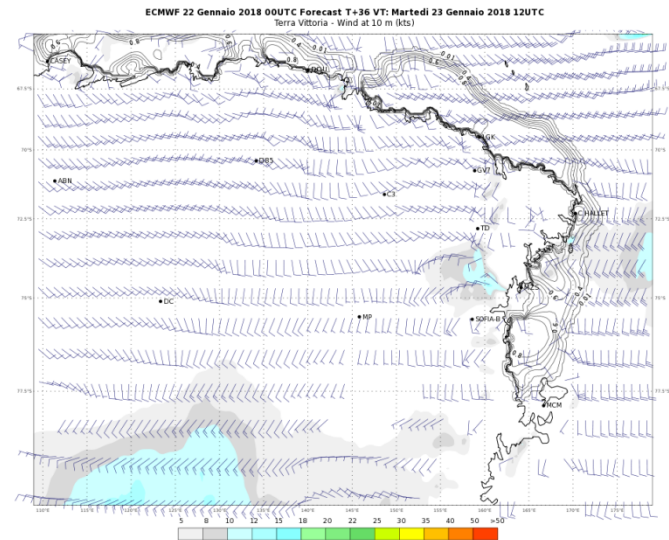
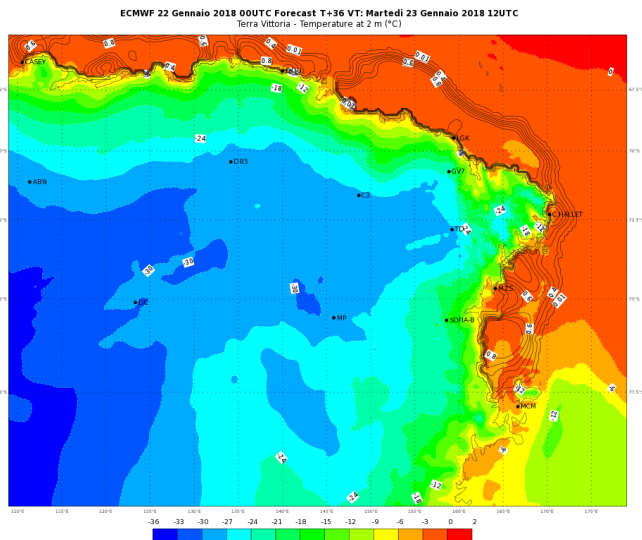
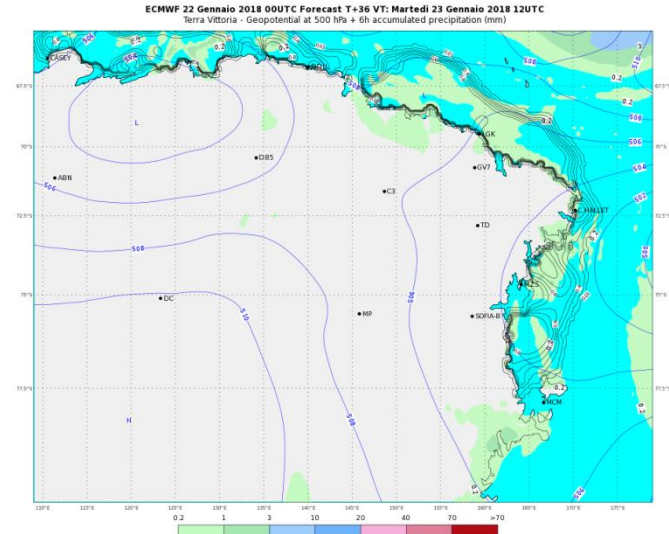
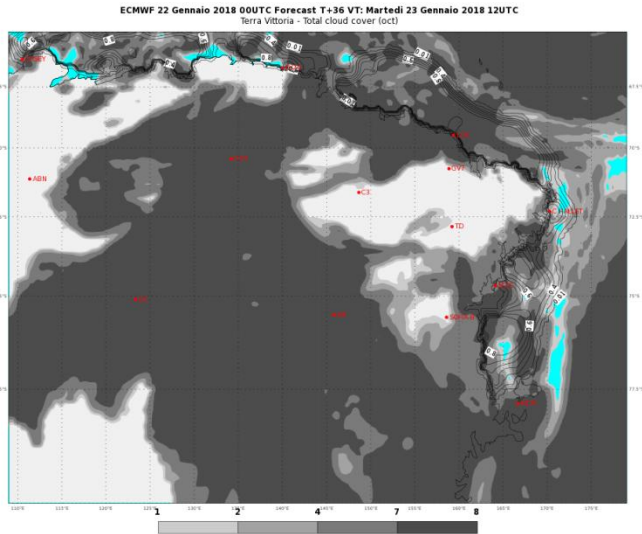
	ORE 07	ORE 13	ORE 19
CIELO			
FENOMENI	NEVE DEBOLE INTERMITTENTE	NEVISCHIO DEBOLE INTERMITTENTE	NIL
VENTO MZS	WSW 15/20 KT	SSW 10/15 KT	WSW 05/10 KT
VENTO BOULDER	WSW 20/25 KT	SSW 15/20 KT	WSW 10/15 KT
TEMPERATURA [°C]	-04/-02 °C	-04/-02 °C	-04/-02 °C
WIND CHILL [°C]	-12/-10 °C	-11/-09 °C	-10/-07 °C
STATO DEL MARE	POCO MOSSO O MOSSO	POCO MOSSO O MOSSO	POCO MOSSO O MOSSO



# PREVISIONI - FORECASTS

## DOMANI - ORE 01 LT

## TOMORROW - 01 LT

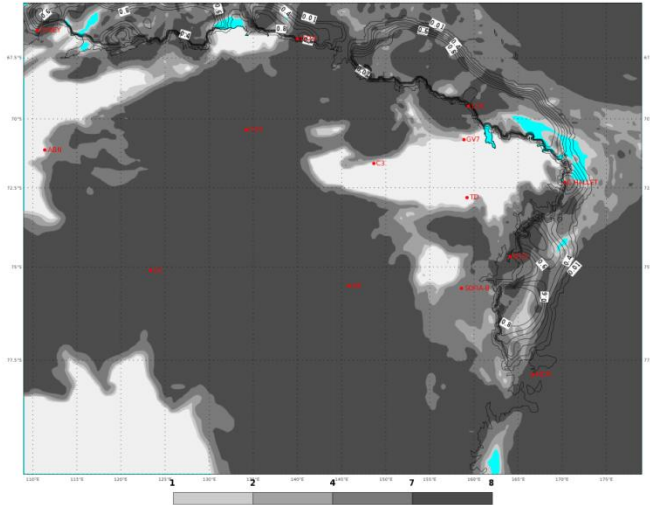


# PREVISIONI - FORECASTS

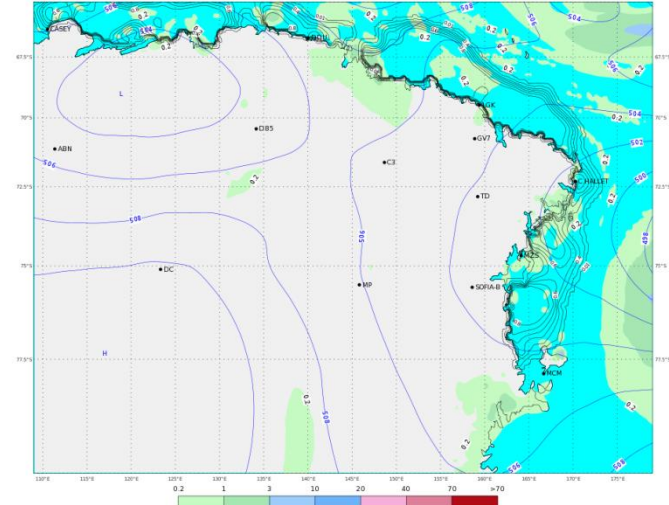
## DOMANI - ORE 07 LT

## TOMORROW - 07 LT

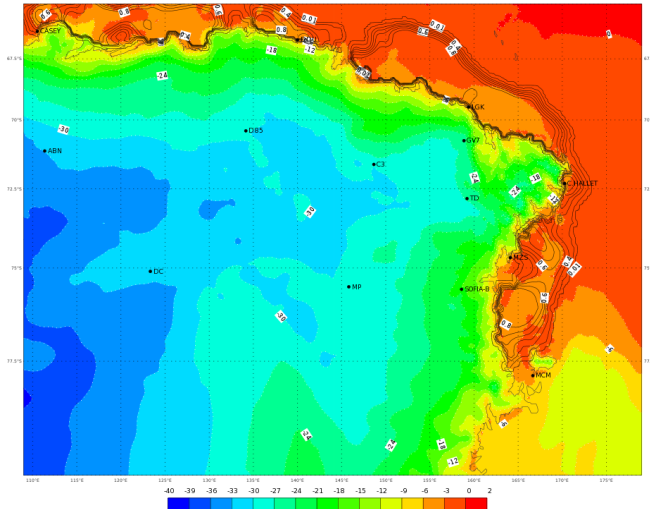
ECMWF 22 Gennaio 2018 00UTC Forecast T+42 VT: Martedì 23 Gennaio 2018 18UTC  
Terra Vittoria - Total cloud cover (oct)



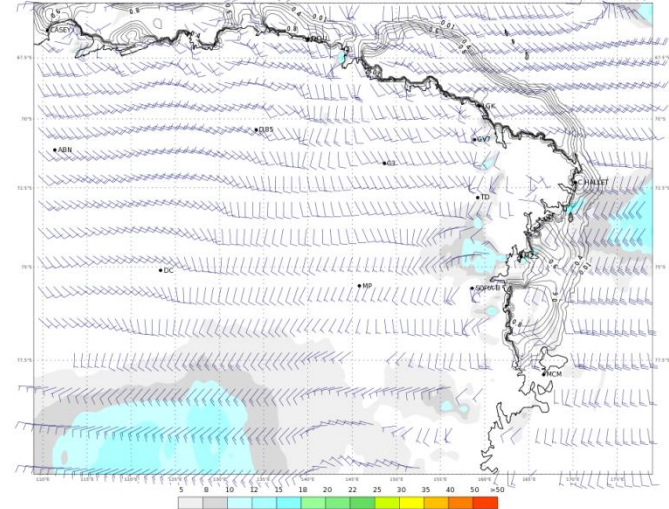
ECMWF 22 Gennaio 2018 00UTC Forecast T+42 VT: Martedì 23 Gennaio 2018 18UTC  
Terra Vittoria - Geopotential at 500 hPa + 6h accumulated precipitation (mm)



ECMWF 22 Gennaio 2018 00UTC Forecast T+42 VT: Martedì 23 Gennaio 2018 18UTC  
Terra Vittoria - Temperature at 2 m (°C)



ECMWF 22 Gennaio 2018 00UTC Forecast T+42 VT: Martedì 23 Gennaio 2018 18UTC  
Terra Vittoria - Wind at 10 m (kts)

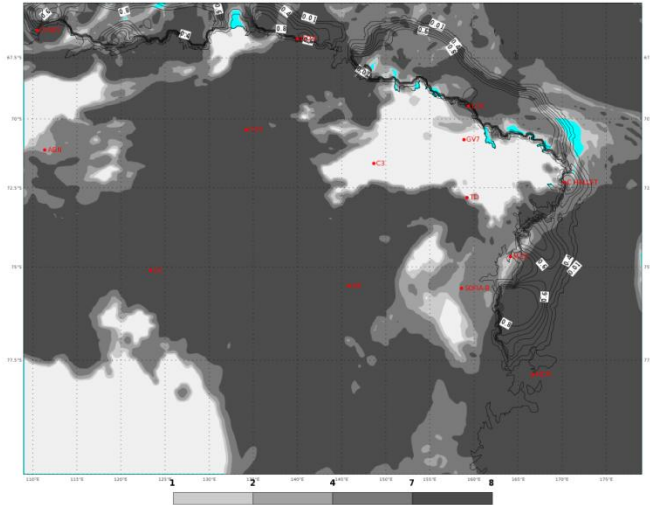


# PREVISIONI - FORECASTS

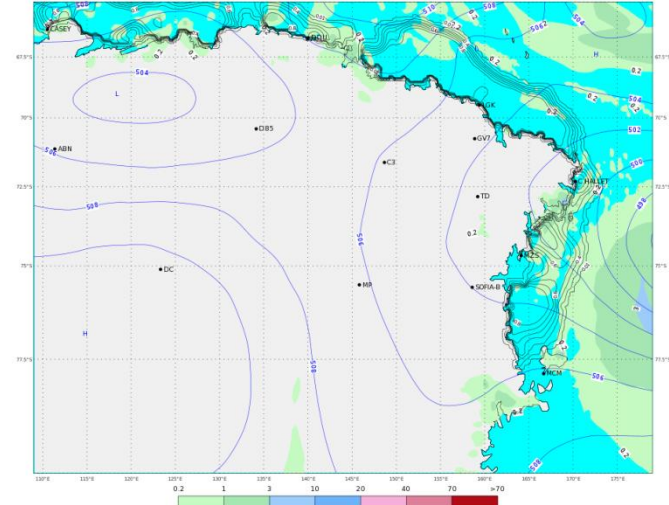
## DOMANI - ORE 13 LT

## TOMORROW - 13 LT

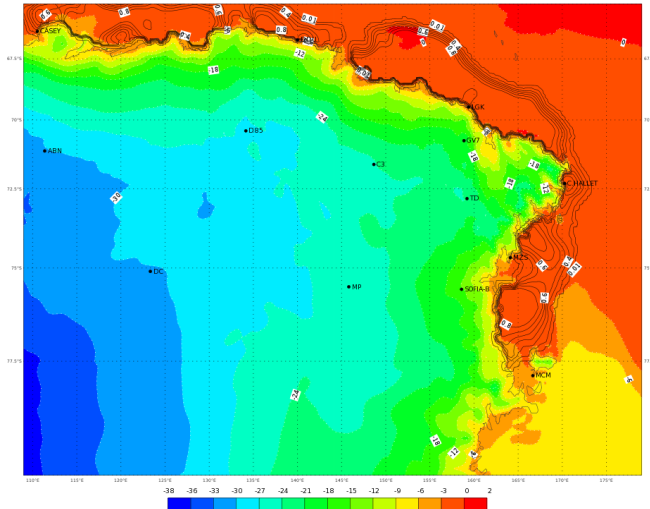
ECMWF 22 Gennaio 2018 00UTC Forecast T+48 VT: Mercoledì 24 Gennaio 2018 00UTC  
Terra Vittoria - Total cloud cover (oct)



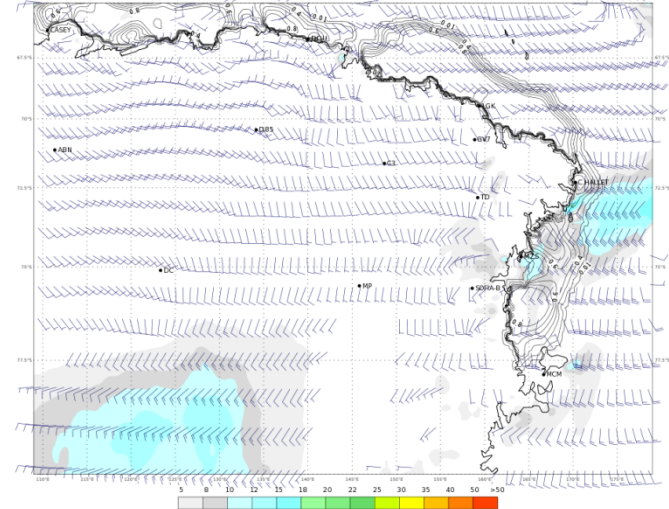
ECMWF 22 Gennaio 2018 00UTC Forecast T+48 VT: Mercoledì 24 Gennaio 2018 00UTC  
Terra Vittoria - Geopotential at 500 hPa + 6h accumulated precipitation (mm)



ECMWF 22 Gennaio 2018 00UTC Forecast T+48 VT: Mercoledì 24 Gennaio 2018 00UTC  
Terra Vittoria - Temperature at 2 m (°C)



ECMWF 22 Gennaio 2018 00UTC Forecast T+48 VT: Mercoledì 24 Gennaio 2018 00UTC  
Terra Vittoria - Wind at 10 m (kts)

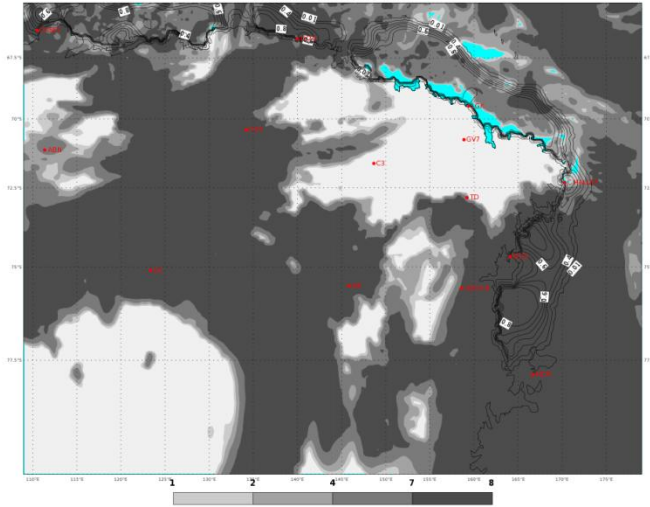


# PREVISIONI - FORECASTS

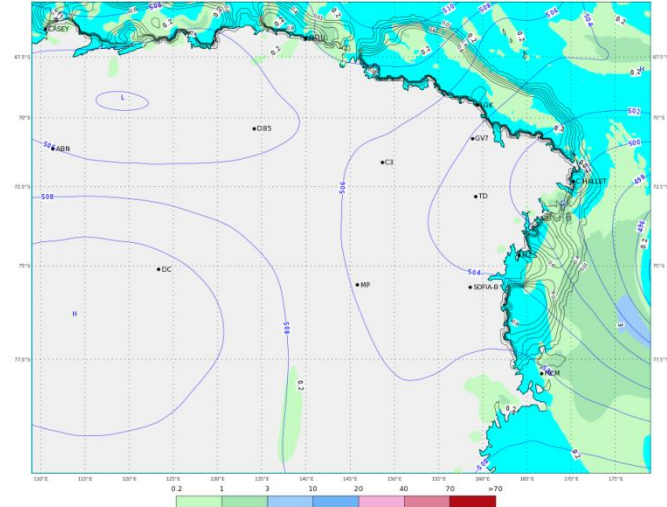
## DOMANI - ORE 19 LT

## TOMORROW - 19 LT

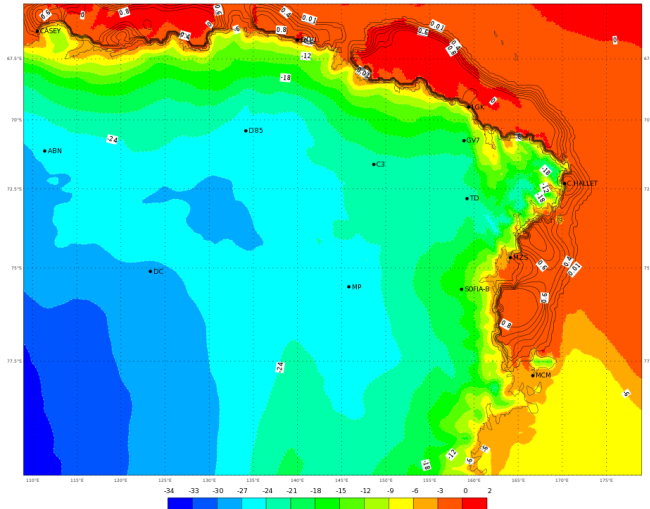
ECMWF 22 Gennaio 2018 00UTC Forecast T+54 VT: Mercoledì 24 Gennaio 2018 06UTC  
Terra Vittoria - Total cloud cover (oct)



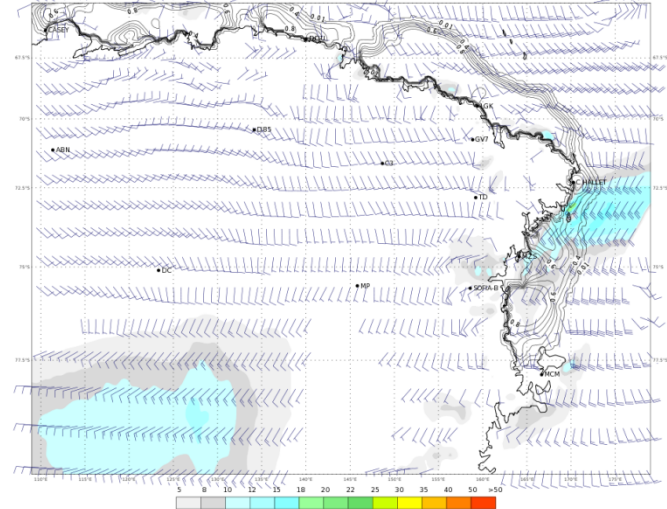
ECMWF 22 Gennaio 2018 00UTC Forecast T+54 VT: Mercoledì 24 Gennaio 2018 06UTC  
Terra Vittoria - Geopotential at 500 hPa + 6h accumulated precipitation (mm)



ECMWF 22 Gennaio 2018 00UTC Forecast T+54 VT: Mercoledì 24 Gennaio 2018 06UTC  
Terra Vittoria - Temperature at 2 m (°C)






ECMWF 22 Gennaio 2018 00UTC Forecast T+54 VT: Mercoledì 24 Gennaio 2018 06UTC  
Terra Vittoria - Wind at 10 m (kts)





# WEATHER FORECAST FOR TOMORROW AT TERRA NOVA BAY

## Wednesday 24/01/2018

	ORE 07	ORE 13	ORE 19
CIELO			
FENOMENI	NIL	NIL	NIL
VENTO MZS	WNW 15/20 KT	WSW 10/15 KT	WSW 10/15 KT
VENTO BOULDER	WNW 20/25 KT	WSW 15/20 KT	WSW 15/20 KT
TEMPERATURA [°C]	-04/-02 °C	-04/-02 °C	-03/-01 °C
WIND CHILL [°C]	-12/-10 °C	-11/-09 °C	-10/-07 °C
STATO DEL MARE	POCO MOSSO O MOSSO	POCO MOSSO O MOSSO	MOSSO

# WEATHER TENDENCY AT TERRA NOVA BAY

Thursday 25/01/2018

	MATTINO	POMERIGGIO
CIELO		
FENOMENI	NEVE DEBOLE	NEVE DEBOLE
VENTO MZS	WSW 15/20 KT	SSW 20/25 KT
VENTO BOULDER	WSW 20/25 KT	SSW 25/30 KT
TEMPERATURA [°C]	-04/-02 °C	-03/-01 °C
WIND CHILL [°C]	-12/-10 °C	-12/-09 °C
STATO DEL MARE	MOSSO	MOSSO



# Extreme Values of Yesterday



<b>22/01/2018 UTC time (13:00 21/01 - 13:00 22/01)</b>		
<b>MAX temperature</b>	<b>(ore 19:37/L)</b>	<b>1.0°C</b>
<b>MIN temperature</b>	<b>(ore 02:37/L)</b>	<b>-5.0 °C</b>
<b>MAX humidity</b>	<b>(ore 22:46/L)</b>	<b>85 %</b>
<b>MIN humidity</b>	<b>(ore 01:39/L)</b>	<b>31 %</b>
<b>MAX wind direction/speed</b>	<b>(ore 08:34/L)</b>	<b>293/37.3 KT</b>

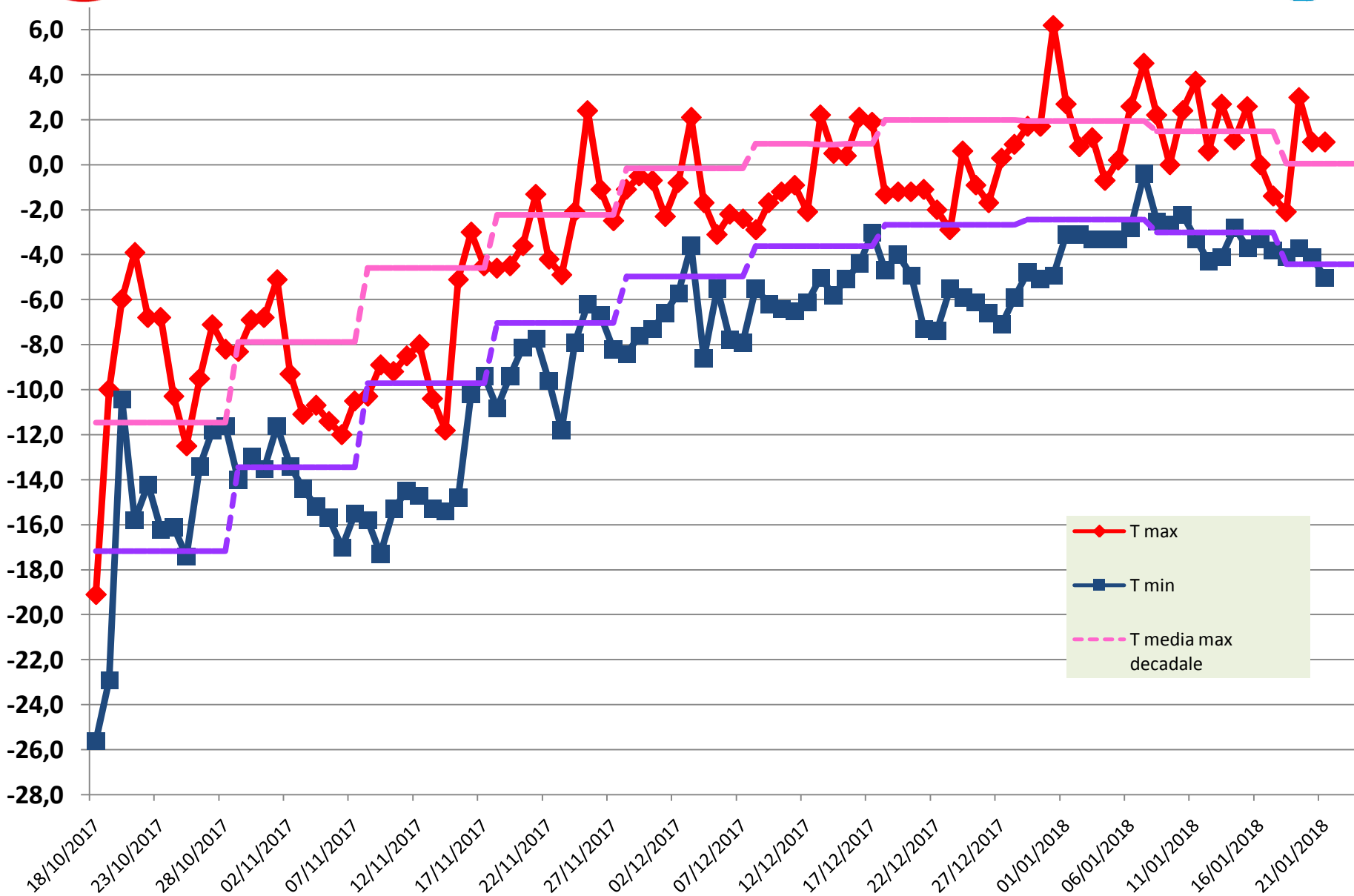
**Remark:** *the reported values are referred to the previous day in terms of Universal Time and not in local time (UTC+13).*



# Temperature measured during the XXXIII Expedition



## ENEIDE weather station (MZS) - Antarctic Climatology Observatory

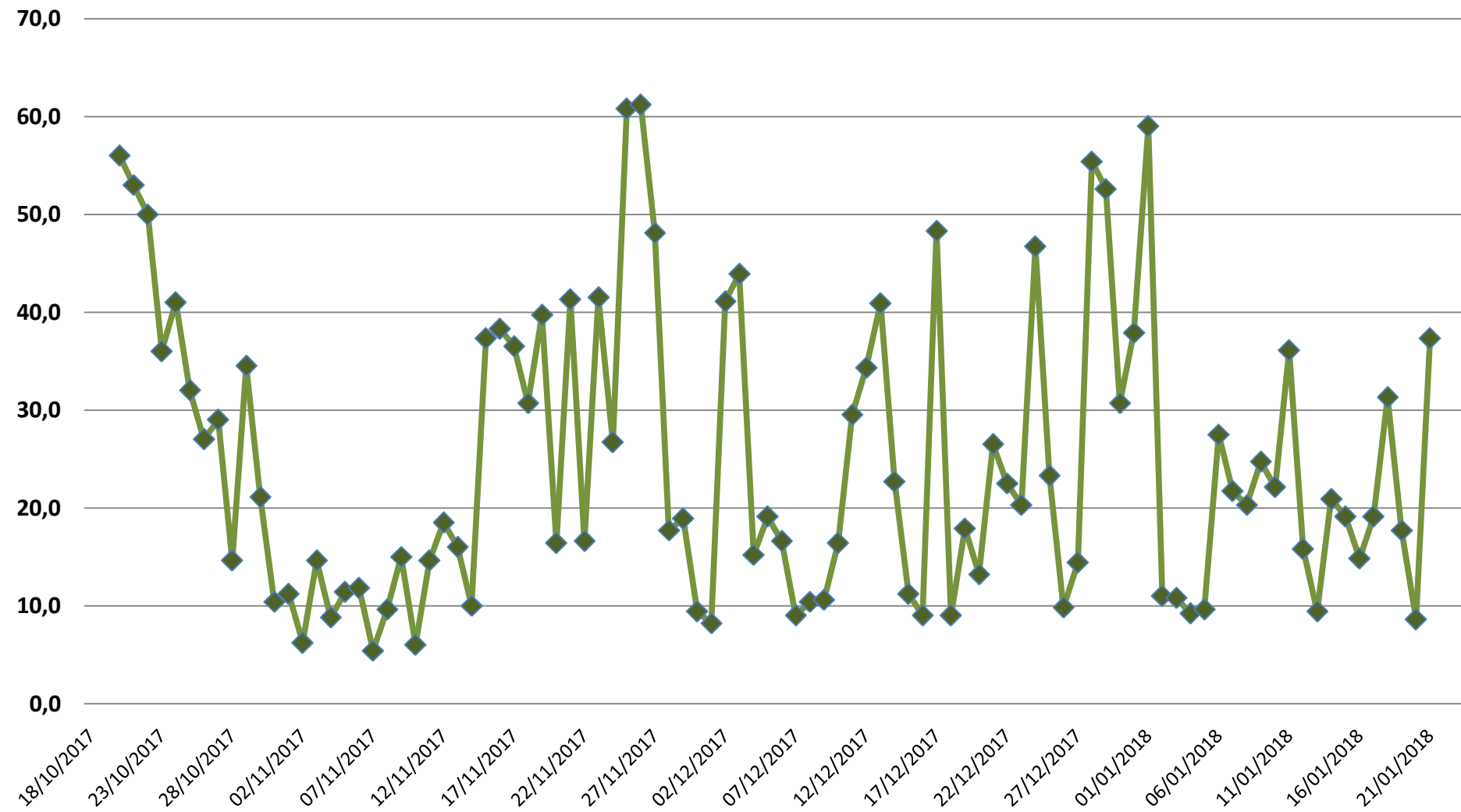






# MAX wind [kt] measured during the XXXIII Expedition

ENEIDE weather station (MZS) - Antarctic Climatology Observatory



**Per ulteriori informazioni contattare  
l'Ufficio Meteorologico di MZS  
int. 510**

**For further information please contact  
MZS Met Office  
ext. 510**

*AVVERTENZA/WARNING*

*Le presenti informazioni NON sono destinate alla pianificazione di volo e/o pre-volo  
The informations here presented are NOT intended for flight planning and/or pre-flight*

[Indietro all'indice – back to index](#)