



WEATHER

Meteorological observations and forecasts

Thursday 25/01/2018

MET Office - "Mario Zucchelli" Base - Terranova Bay

Ten. Col. Luigi Verzelletti
Cap. Francesco Mariella



Agenzia nazionale per le nuove tecnologie,
l'energia e lo sviluppo economico sostenibile

Information NOT intended for flight planning and pre-flight



Indice dei contenuti Table of Contents

Puoi saltare direttamente sull'argomento di interesse cliccandoci sopra

Jump directly to the issue of your interest just clicking on it

1. [Situazione – Situation](#)
2. [Ultime Misure delle Stazioni Meteo Automatiche - Last Measurements from Automatic Weather Stations](#)
3. [Dati attuali a MZS – Current data at MZS \(ENEIDE – ‘Campo Meteo’\)](#)
4. [Mappe di previsione: oggi ore 07/L – Forecast Maps: today 07/L](#)
5. [Mappe di previsione: oggi ore 13/L – Forecast Maps: today 13/L](#)
6. [Mappe di previsione: oggi ore 19/L – Forecast Maps: today 19/L](#)
7. [Tempo previsto oggi a Baia Terra Nova – Weather Forecast for today at Terra Nova Bay](#)
8. [Mappe di previsione: domani ore 01/L – Forecast Maps: tomorrow 01/L](#)
9. [Mappe di previsione: domani ore 07/L – Forecast Maps: tomorrow 07/L](#)
10. [Mappe di previsione: domani ore 13/L – Forecast Maps: tomorrow 13/L](#)
11. [Mappe di previsione: domani ore 19/L – Forecast Maps: tomorrow 19/L](#)
12. [Tempo previsto domani a Baia Terra Nova – Weather Forecast for tomorrow at Terra Nova Bay](#)
13. [Tendenza per dopodomani a Baia Terra Nova – Weather Tendency for the day after tomorrow at Terra Nova Bay](#)
14. [Valori estremi di ieri – Extreme Values of Yesterday](#)
15. [Andamento delle Temperature durante la Spedizione](#)
16. [Andamento del vento massimo durante la Spedizione](#)
17. [Contatti - Contacts](#)



WEATHER

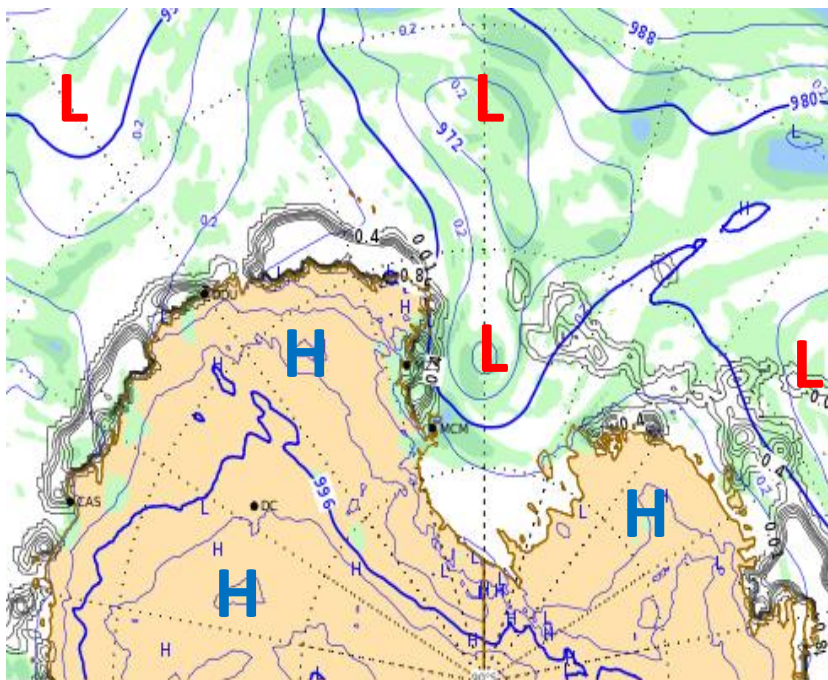
Meteorological observations and forecasts



Thursday 25/01/2018

Sea Level Pressure + Precipitation at 07:00

Latest Report



MARIO ZUCHELLI Station

2018-01-24 17:05:00 UTC (74° 41' 45.3" S, 164° 05' 31.8" E)
<http://www.climantartide.it>

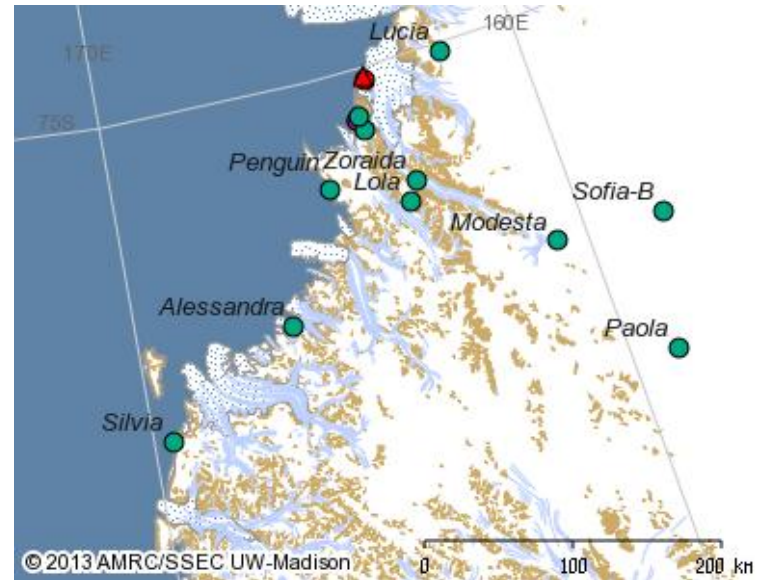
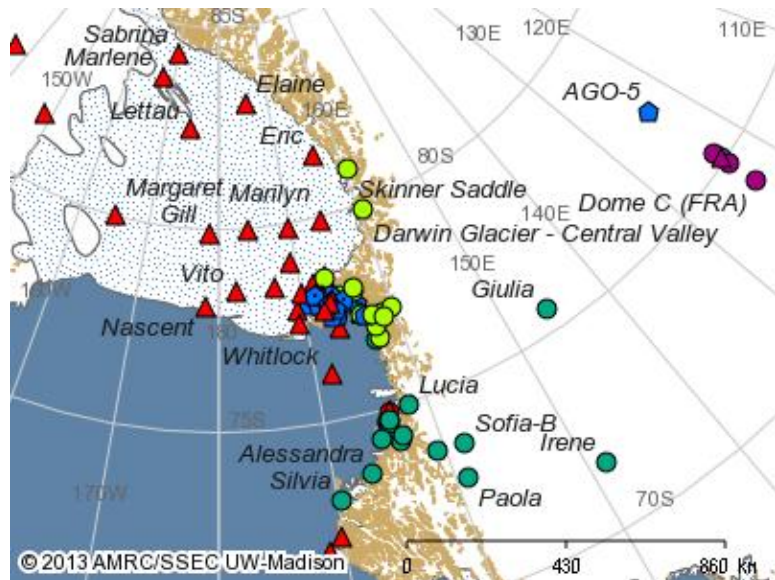
| | | |
|--|-----------------------------------|-------|
| | Pressure (mba) | 971.5 |
| | Temperature (C°) | -2.6 |
| | Wind Speed (knt) | 17.9 |
| | Relative Humidity (%) | 80 |
| | Sun Radiation (W/m ²) | 126 |

VENTO AREA BOULDER: WSW 35 KT (06:10 loc time recorded)

Automatic Weather Stations (AWS) Updates

| AWS | Datetime UTC | Wind Direction [°] | Wind Speed [kts] | Wind Gust [kts] | Temperature [°C] | MAX_Temp [°C] | MIN_Temp [°C] | Humidity [%] | Pressure [hPa] |
|------------|------------------|--------------------|------------------|-----------------|------------------|---------------|---------------|--------------|----------------|
| Alessandra | 2018-01-24 16:00 | 230 | 8 | 31 | -4.0 | -3.8 | -4.1 | 92 | 962.1 |
| Arelis | 2018-01-24 16:00 | 180 | 16 | 22 | -4.6 | -4.5 | -4.8 | 11 | 964.1 |
| Concordia | 2018-01-24 16:00 | 160 | 4 | 7 | -30.9 | -30.9 | -33.7 | 72 | 645.1 |
| Eneide | 2018-01-24 16:00 | 260 | 18 | 33 | -2.6 | -2.4 | -3.6 | 75 | 971.7 |
| Giulia | 2018-01-24 16:00 | 200 | 11 | 14 | -26.9 | -26.9 | -27.5 | 76 | 713.9 |
| Lola | 2018-01-24 16:00 | 220 | 22 | 28 | -14.8 | -14.4 | -15.2 | 86 | 797.2 |
| Modesta | 2018-01-24 16:00 | 320 | 7 | 8 | -24.0 | -23.2 | -24.0 | 77 | 772.0 |
| Paola | 2018-01-07 14:00 | 80 | 6 | 7 | -21.6 | -21.3 | -22.2 | 82 | // |
| Rita | 2018-01-24 16:00 | 260 | 24 | 37 | -4.7 | -4.5 | -5.6 | 88 | 950.0 |
| Silvia | 2018-01-24 16:00 | 250 | 50 | 65 | -7.1 | -6.9 | -7.2 | // | 909.3 |
| Sofiab | 2018-01-24 16:00 | 190 | 6 | 9 | -15.4 | -14.5 | -15.8 | 71 | 806.5 |
| Zoraida | 2018-01-24 16:00 | 310 | 21 | 22 | -9.8 | -9.1 | -9.8 | 78 | 882.2 |

N.B. I dati presenti non sono validati e quindi non adatti ad un uso operativo.



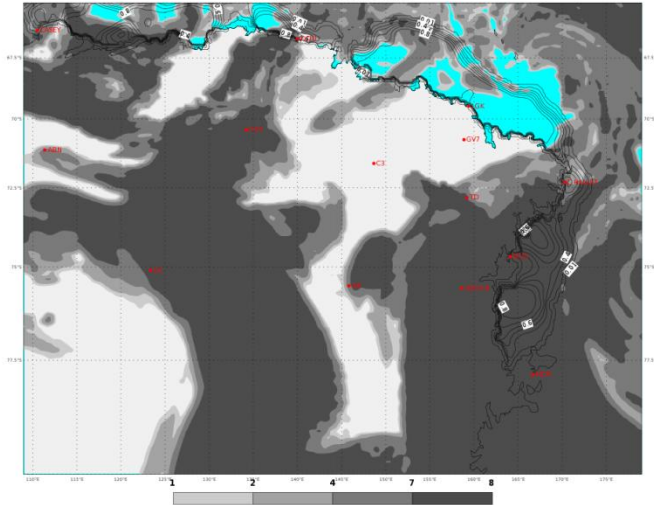
[Indietro all'indice - back to index](#)

PREVISIONI - FORECASTS

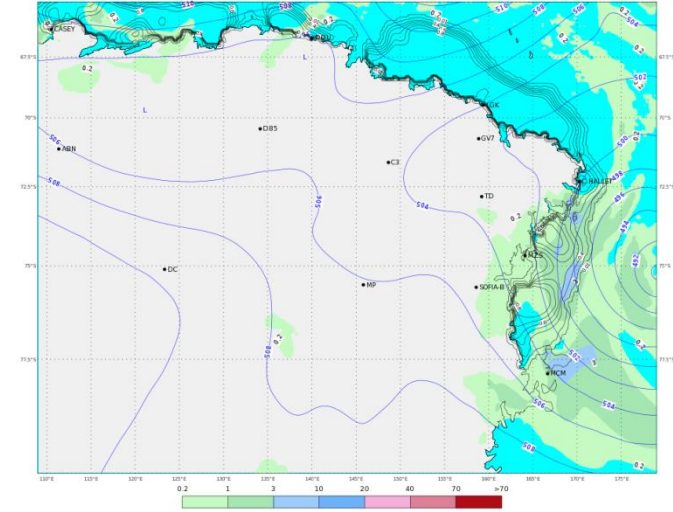
OGGI - ORE 07 LT

TODAY - 07 LT

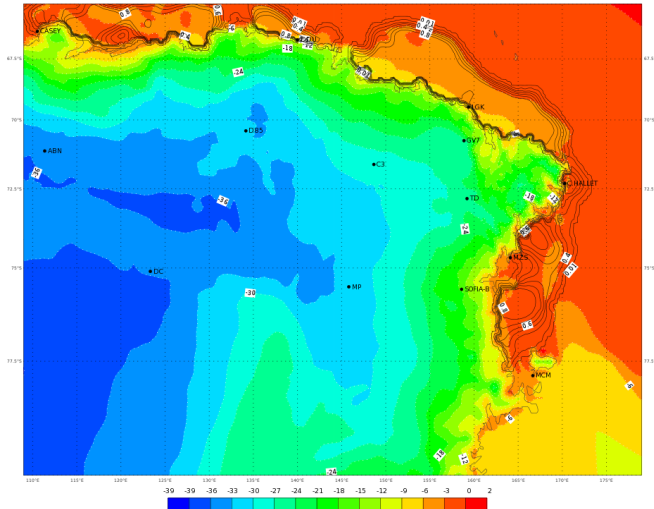
ECMWF 24 Gennaio 2018 00UTC Forecast T+18 VT: Mercoledì 24 Gennaio 2018 18UTC
Terra Vittoria - Total cloud cover (oct)



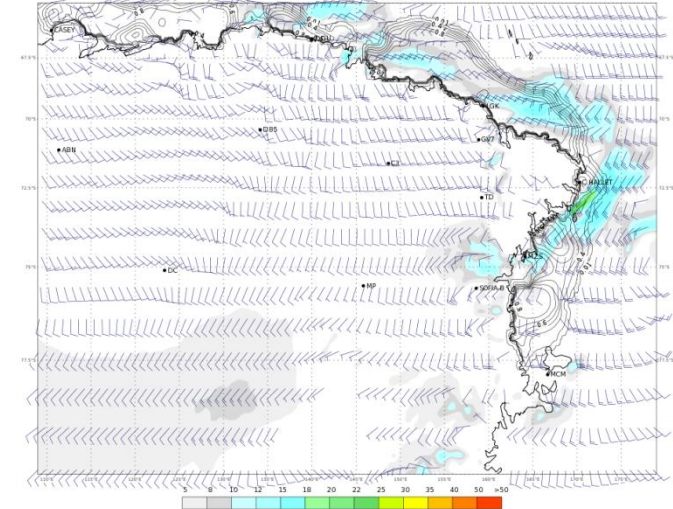
ECMWF 24 Gennaio 2018 00UTC Forecast T+18 VT: Mercoledì 24 Gennaio 2018 18UTC
Terra Vittoria - Geopotential at 500 hPa + 6h accumulated precipitation (mm)



ECMWF 24 Gennaio 2018 00UTC Forecast T+18 VT: Mercoledì 24 Gennaio 2018 18UTC
Terra Vittoria - temperature at 2 m (°C)



ECMWF 24 Gennaio 2018 00UTC Forecast T+18 VT: Mercoledì 24 Gennaio 2018 18UTC
Terra Vittoria - Wind at 10 m (kts)

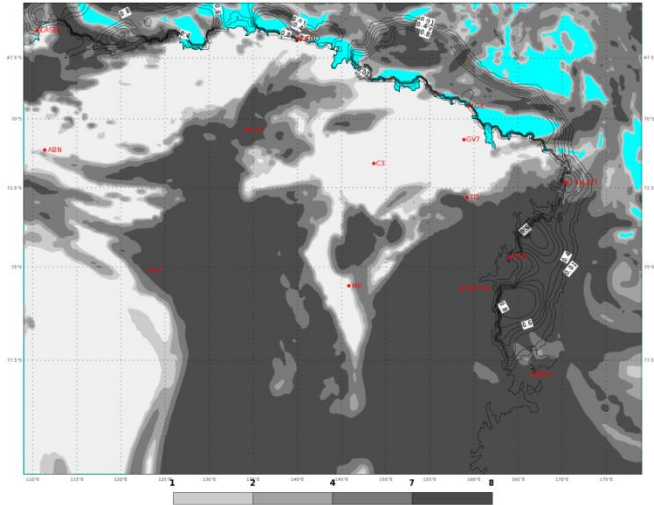


PREVISIONI - FORECASTS

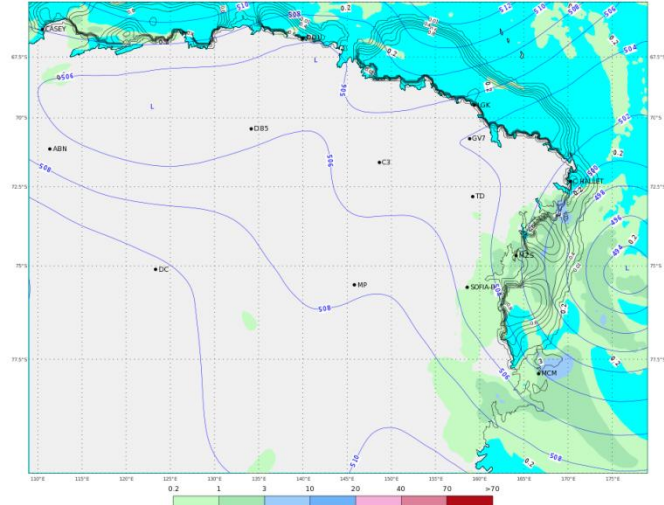
OGGI - ORE 13 LT

TODAY - 13 LT

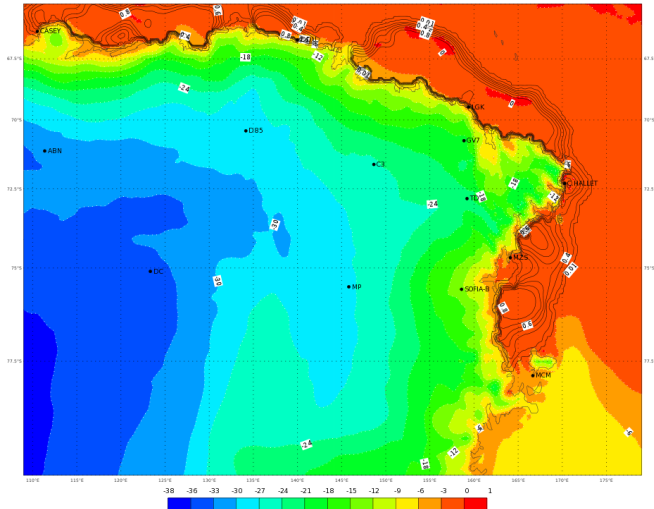
ECMWF 24 Gennaio 2018 00UTC Forecast T+24 VT: Giovedì 25 Gennaio 2018 00UTC
Terra Vittoria - Total cloud cover (oct)



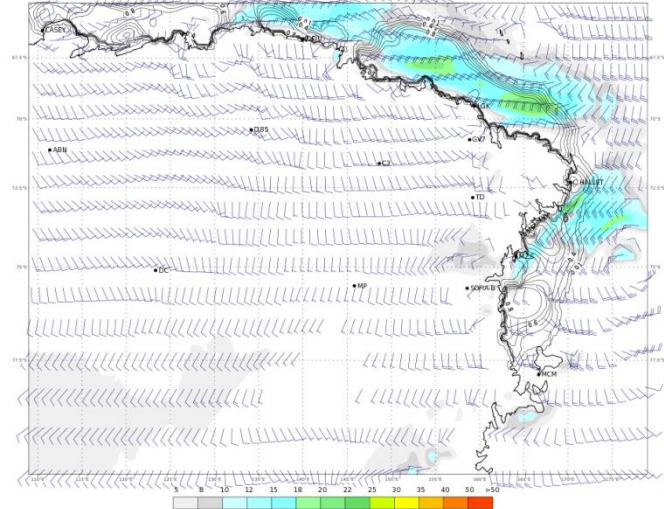
ECMWF 24 Gennaio 2018 00UTC Forecast T+24 VT: Giovedì 25 Gennaio 2018 00UTC
Terra Vittoria - Geopotential at 500 hPa + 6h accumulated precipitation (mm)



ECMWF 24 Gennaio 2018 00UTC Forecast T+24 VT: Giovedì 25 Gennaio 2018 00UTC
Terra Vittoria - Temperature at 2 m (°C)



ECMWF 24 Gennaio 2018 00UTC Forecast T+24 VT: Giovedì 25 Gennaio 2018 00UTC
Terra Vittoria - Wind at 10 m (kts)

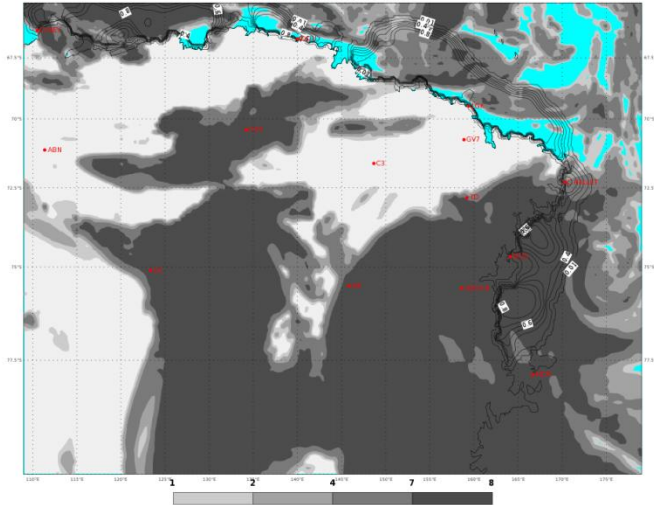


PREVISIONI - FORECASTS

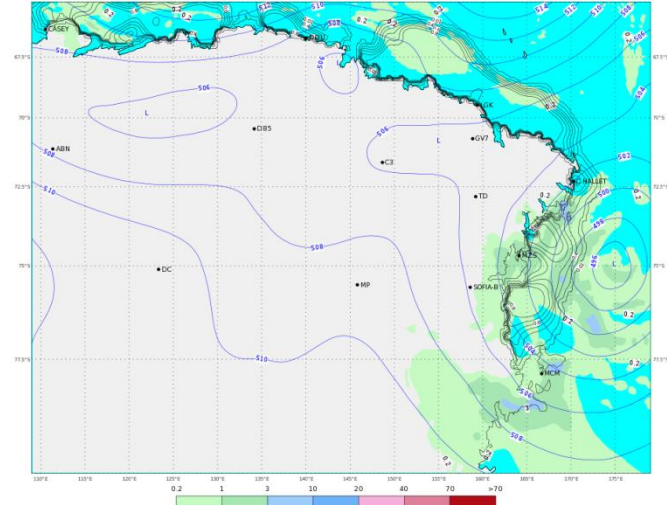
OGGI - ORE 19 LT

TODAY - 19 LT

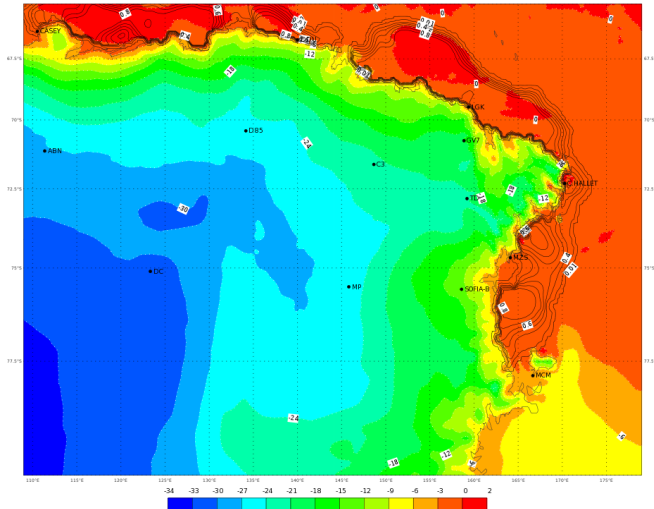
ECMWF 24 Gennaio 2018 00UTC Forecast T+30 VT: Giovedì 25 Gennaio 2018 06UTC
Terra Vittoria - Total cloud cover (oct)



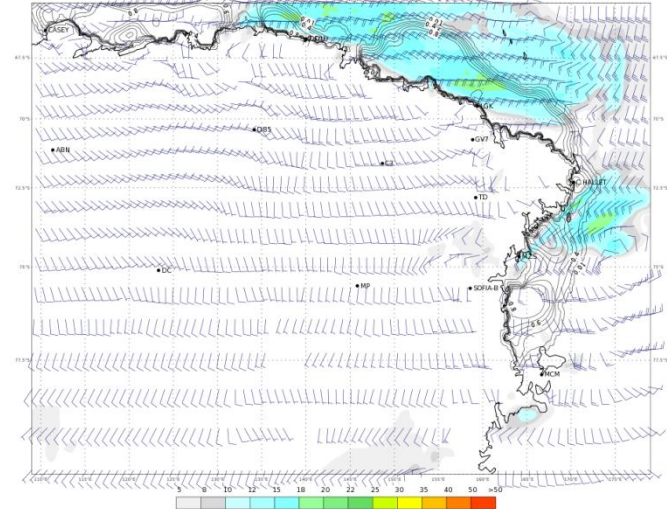
ECMWF 24 Gennaio 2018 00UTC Forecast T+30 VT: Giovedì 25 Gennaio 2018 06UTC
Terra Vittoria - Geopotential at 500 hPa + 6h accumulated precipitation (mm)



ECMWF 24 Gennaio 2018 00UTC Forecast T+30 VT: Giovedì 25 Gennaio 2018 06UTC
Terra Vittoria - Temperature at 2 m (°C)






ECMWF 24 Gennaio 2018 00UTC Forecast T+30 VT: Giovedì 25 Gennaio 2018 06UTC
Terra Vittoria - Wind at 10 m (kts)



WEATHER FORECAST FOR TODAY AT TERRA NOVA BAY

Thursday 25/01/2018

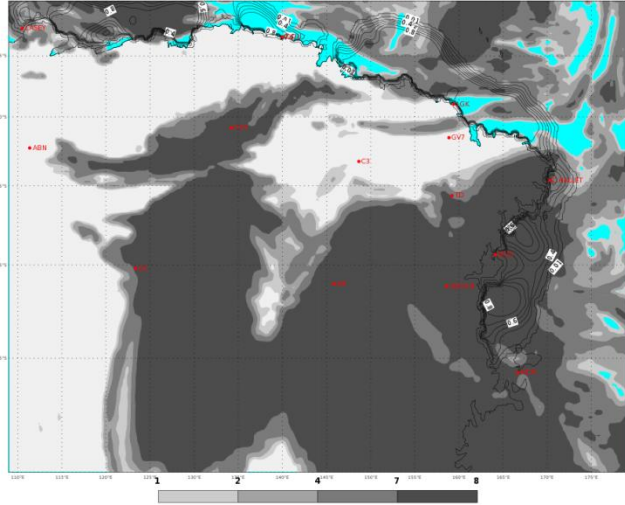
| | ORE 07 | ORE 13 | ORE 19 |
|------------------|---|---|---|
| CIELO |  |  |  |
| FENOMENI | NEVE DEBOLE INTERMITTENTE | NEVE DEBOLE | NEVE DEBOLE A TRATTI MODERATA |
| VENTO MZS | WSW 20/25 KT | WSW20/25 KT | SSW 15/20 KT |
| VENTO BOULDER | WSW 25/35 KT | WSW 25/35 KT | SSW 20/30 KT |
| TEMPERATURA [°C] | -03/-01 °C | -03/-01 °C | -02/00 °C |
| WIND CHILL [°C] | -12/-09 °C | -12/-09 °C | -10/-07 °C |
| STATO DEL MARE | POCO MOSSO O MOSSO | MOSSO | MOSSO |

PREVISIONI - FORECASTS

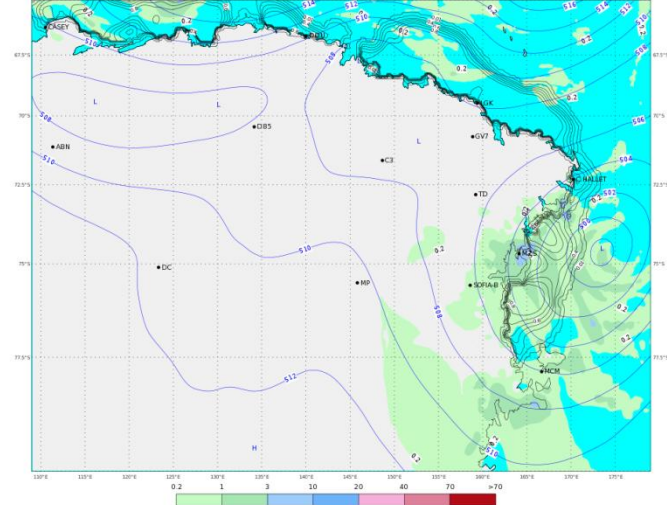
DOMANI - ORE 01 LT

TOMORROW - 01 LT

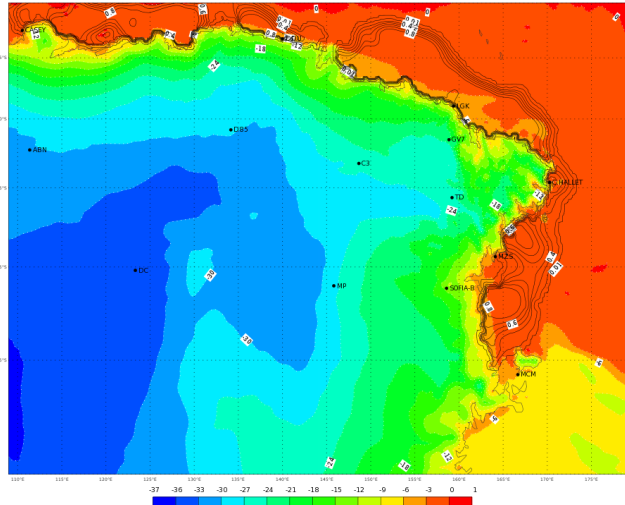
ECMWF 24 Gennaio 2018 00UTC Forecast T+36 VT: Giovedì 25 Gennaio 2018 12UTC
Terra Vittoria - Total cloud cover (oct)



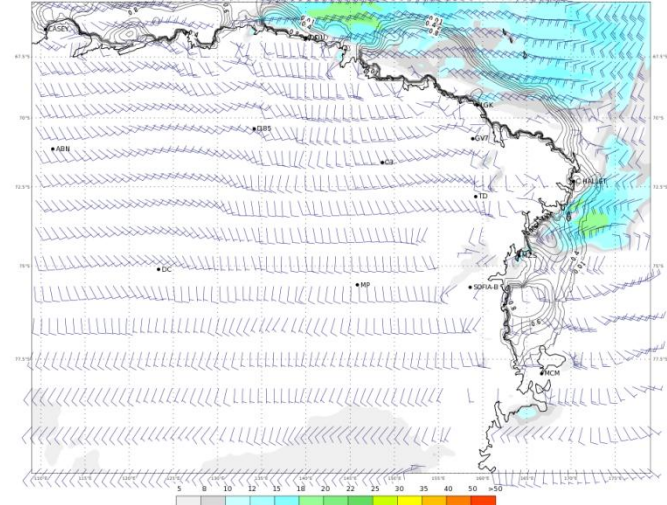
ECMWF 24 Gennaio 2018 00UTC Forecast T+36 VT: Giovedì 25 Gennaio 2018 12UTC
Terra Vittoria - Geopotential at 500 hPa + 6h accumulated precipitation (mm)



ECMWF 24 Gennaio 2018 00UTC Forecast T+36 VT: Giovedì 25 Gennaio 2018 12UTC
Terra Vittoria - temperature at 2 m (°C)



ECMWF 24 Gennaio 2018 00UTC Forecast T+36 VT: Giovedì 25 Gennaio 2018 12UTC
Terra Vittoria - Wind at 10 m (kts)

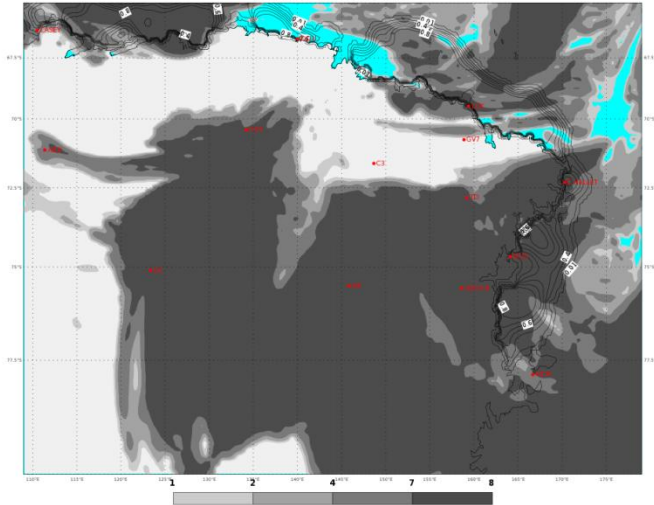


PREVISIONI - FORECASTS

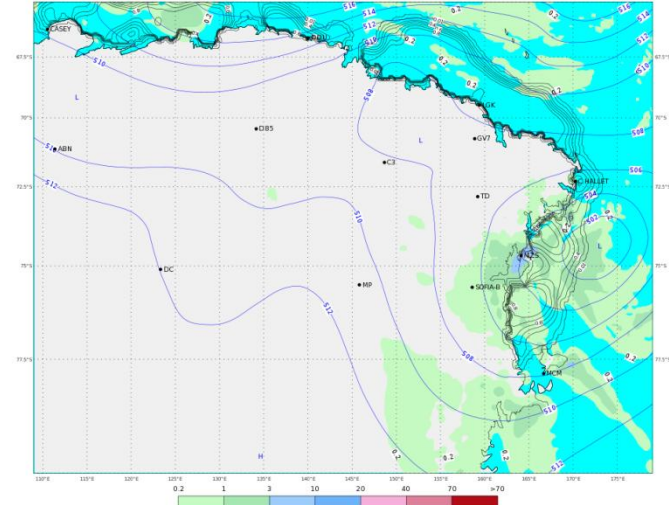
DOMANI - ORE 07 LT

TOMORROW - 07 LT

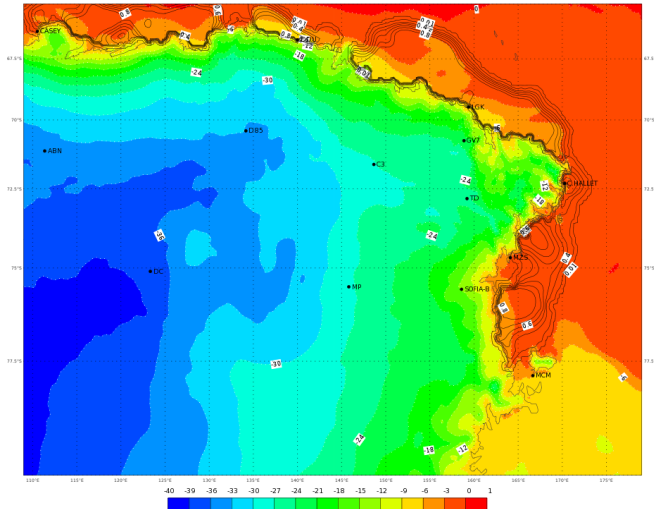
ECMWF 24 Gennaio 2018 00UTC Forecast T+42 VT: Giovedì 25 Gennaio 2018 18UTC
Terra Vittoria - Total cloud cover (oct)



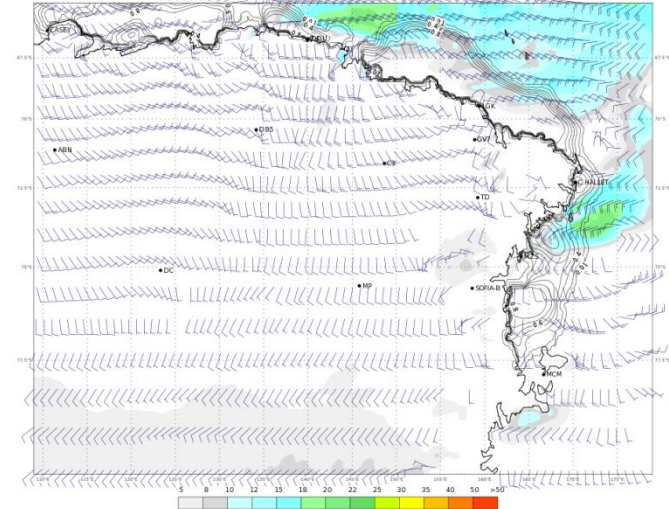
ECMWF 24 Gennaio 2018 00UTC Forecast T+42 VT: Giovedì 25 Gennaio 2018 18UTC
Terra Vittoria - Geopotential at 500 hPa + 6h accumulated precipitation (mm)



ECMWF 24 Gennaio 2018 00UTC Forecast T+42 VT: Giovedì 25 Gennaio 2018 18UTC
Terra Vittoria - Temperature at 2 m (°C)



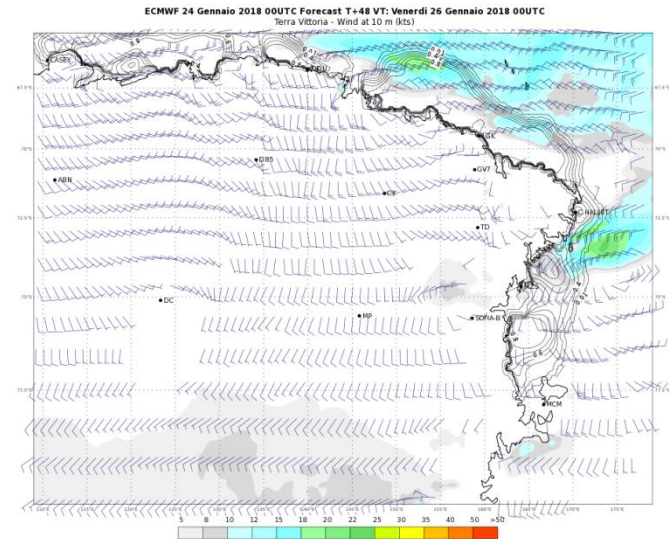
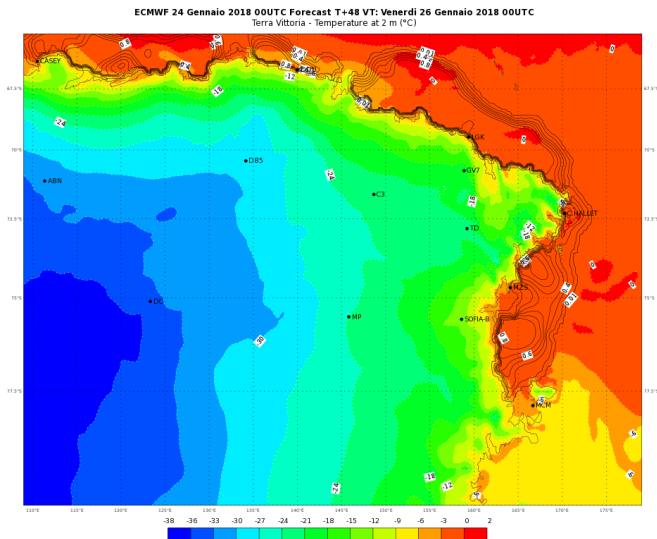
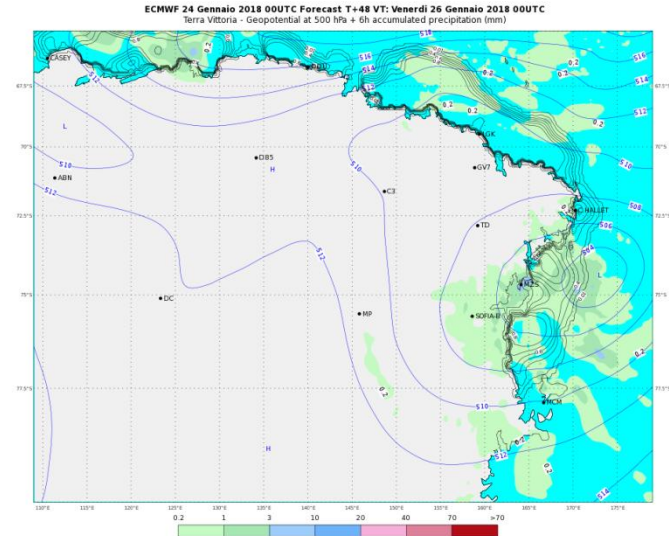
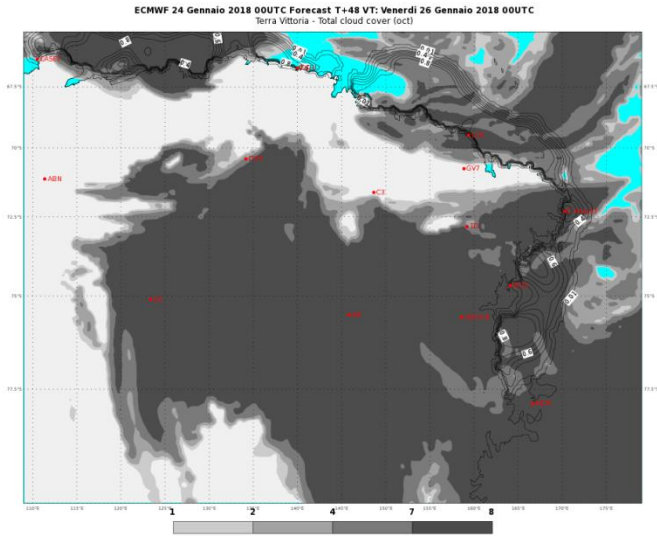
ECMWF 24 Gennaio 2018 00UTC Forecast T+42 VT: Giovedì 25 Gennaio 2018 18UTC
Terra Vittoria - Wind at 10 m (kts)



PREVISIONI - FORECASTS

DOMANI - ORE 13 LT

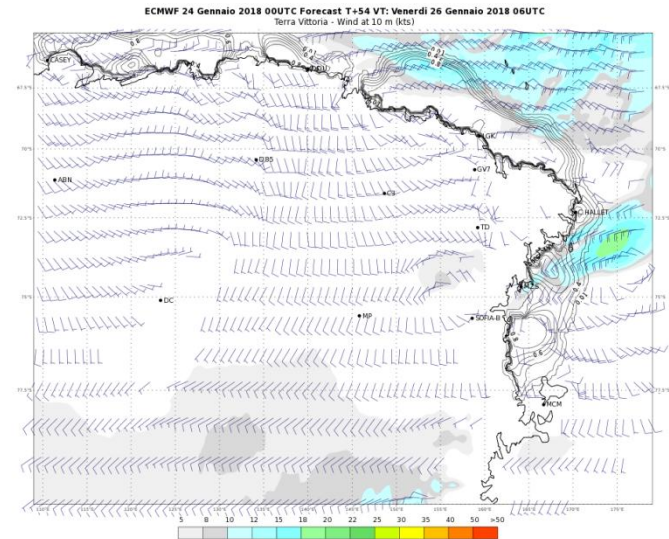
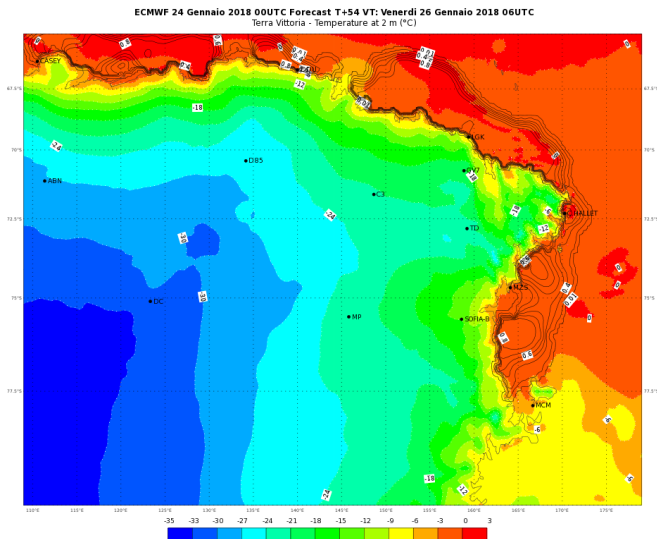
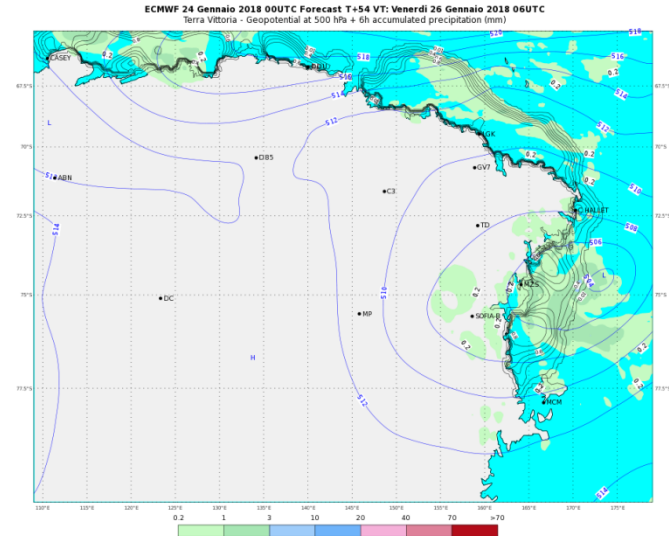
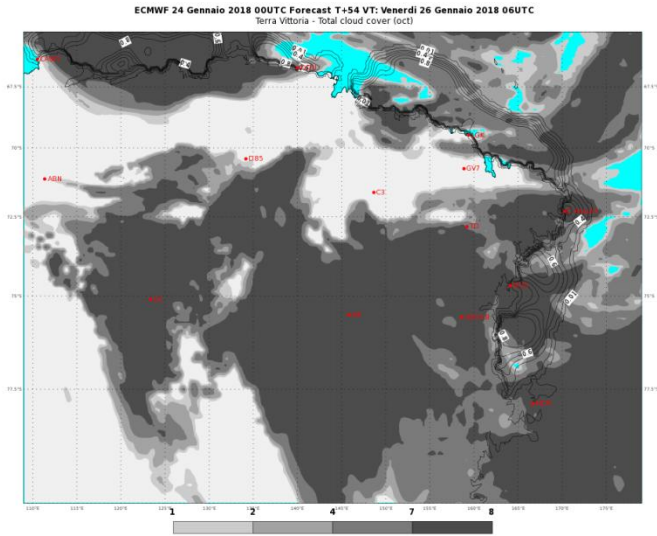
TOMORROW - 13 LT



PREVISIONI - FORECASTS




DOMANI - ORE 19 LT

TOMORROW - 19 LT





WEATHER FORECAST FOR TOMORROW AT TERRA NOVA BAY

Friday 26/01/2018

| | ORE 07 | ORE 13 | ORE 19 |
|------------------|---|---|---|
| CIELO |  |  |  |
| FENOMENI | NEVE MODERATA | NEVE DEBOLE | NEVE DEBOLE |
| VENTO MZS | SSW 15/20 KT | SSW 15/20 KT | WNW 10/15 KT |
| VENTO BOULDER | SSW 20/30 KT | SSW 20/30 KT | WNW 15/20 KT |
| TEMPERATURA [°C] | -03/-01 °C | -03/-01 °C | -03/-01 °C |
| WIND CHILL [°C] | -12/-09 °C | -12/-09 °C | -11/-08 °C |
| STATO DEL MARE | POCO MOSSO O MOSSO | POCO MOSSO O MOSSO | POCO MOSSO O MOSSO |

WEATHER TENDENCY AT TERRA NOVA BAY

Saturday 27/01/2018

| | MATTINO | POMERIGGIO |
|------------------|--|---|
| CIELO |  |  |
| FENOMENI | NIL | NIL |
| VENTO MZS | WNW 05/10 KT | VRB 05 KT |
| VENTO BOULDER | WNW 10/15 KT | VRB 07 KT |
| TEMPERATURA [°C] | -03/-01 °C | -02/00 °C |
| WIND CHILL [°C] | -09/-06 °C | -06/-03 °C |
| STATO DEL MARE | POCO MOSSO | QUASI CALMO O POCO MOSSO |

http://mzs-pdc.mzs.pnra.it/meteo/bollettino_meteo.pdf

[Indietro all'indice – back to index](#)



Extreme Values of Yesterday



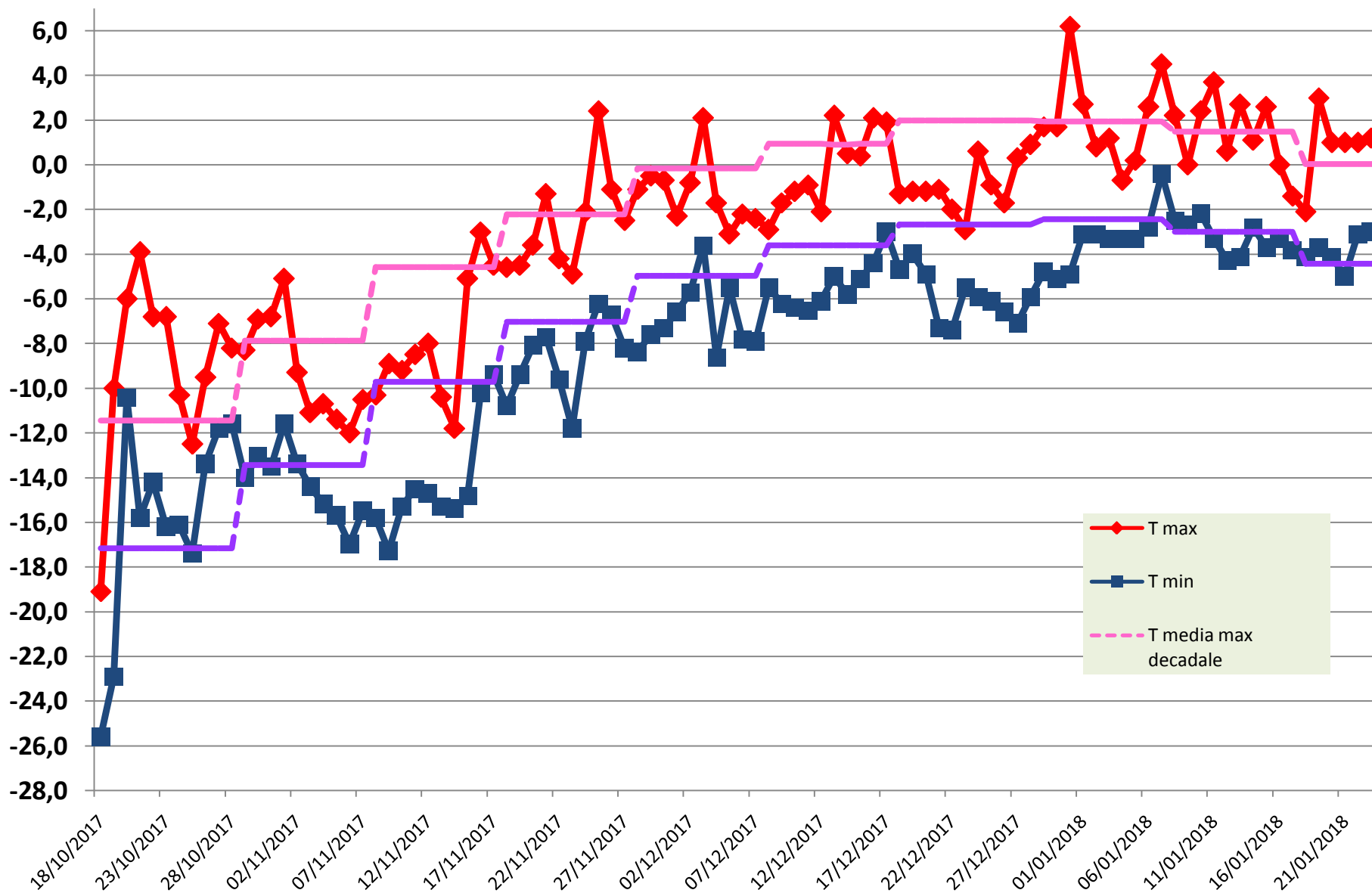
| 24/01/2018 UTC time (13:00 23/01 - 13:00 24/01) | | |
|--|----------------------|--------------------|
| MAX temperature | (ore 16:24/L) | 1.2°C |
| MIN temperature | (ore 23:38/L) | -3.0 °C |
| MAX humidity | (ore 08:13/L) | 100 % |
| MIN humidity | (ore 20:07/L) | 70 % |
| MAX wind direction/speed | (ore 02:16/L) | 225/19.5 KT |

Remark: *the reported values are referred to the previous day in terms of Universal Time and not in local time (UTC+13).*



Temperature measured during the XXXIII Expedition

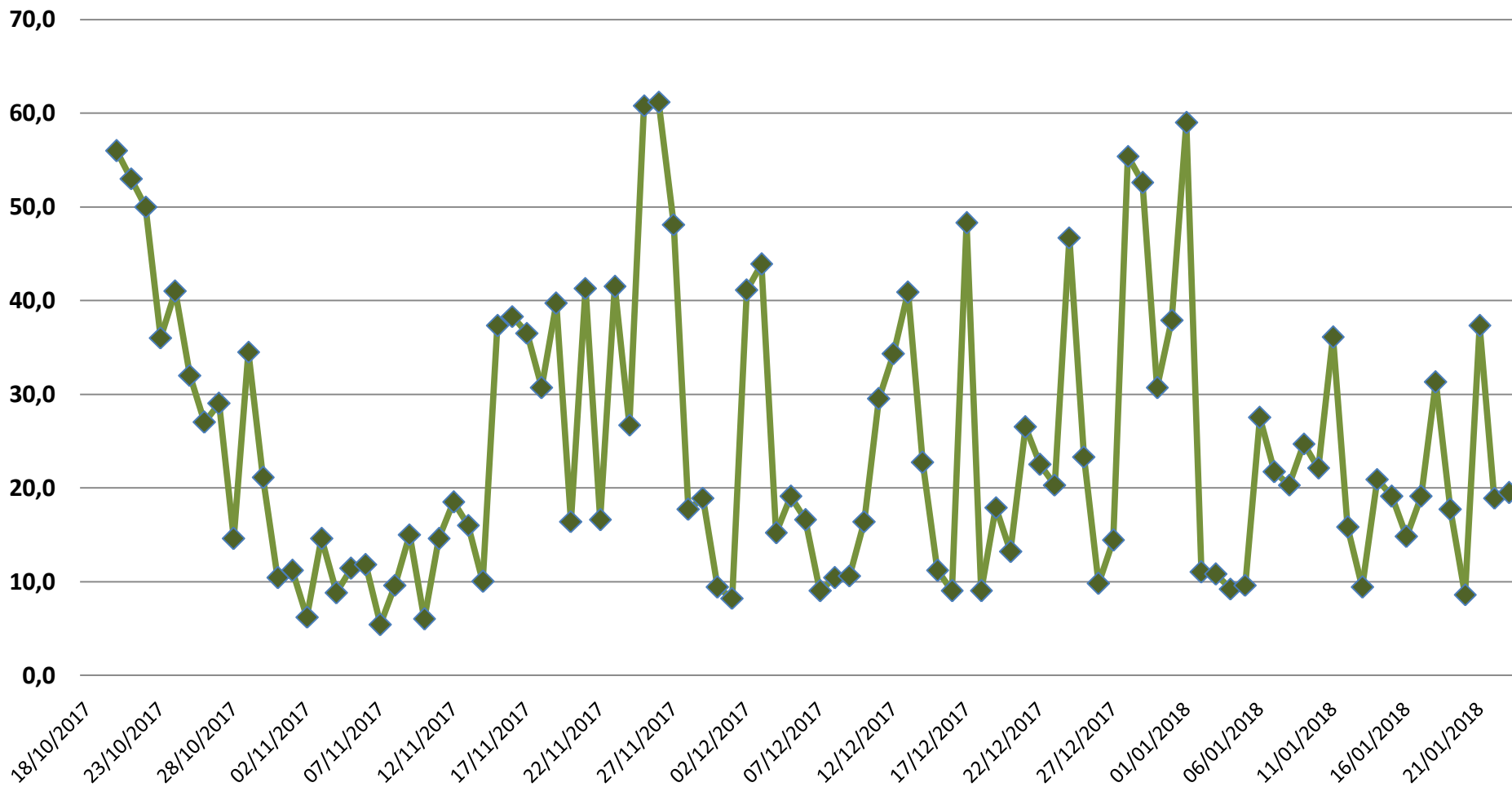
ENEIDE weather station (MZS) - Antarctic Climatology Observatory





MAX wind [kt] measured during the XXXIII Expedition

ENEIDE weather station (MZS) - Antarctic Climatology Observatory



**Per ulteriori informazioni contattare
l'Ufficio Meteorologico di MZS
int. 510**

**For further information please contact
MZS Met Office
ext. 510**

AVVERTENZA/WARNING

*Le presenti informazioni NON sono destinate alla pianificazione di volo e/o pre-volo
The informations here presented are NOT intended for flight planning and/or pre-flight*

[Indietro all'indice – back to index](#)