



WEATHER

Meteorological observations and forecasts

Sunday 28/01/2018

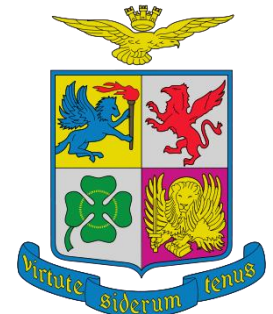
MET Office - "Mario Zucchelli" Base - Terranova Bay

Ten. Col. Luigi Verzelletti
Cap. Francesco Mariella



Agenzia nazionale per le nuove tecnologie,
l'energia e lo sviluppo economico sostenibile

Information NOT intended for flight planning and pre-flight



Indice dei contenuti

Table of Contents

Puoi saltare direttamente sull'argomento di interesse cliccandoci sopra

Jump directly to the issue of your interest just clicking on it

1. [Situazione – Situation](#)
2. [Ultime Misure delle Stazioni Meteo Automatiche - Last Measurements from Automatic Weather Stations](#)
3. [Dati attuali a MZS – Current data at MZS \(ENEIDE – ‘Campo Meteo’\)](#)
4. [Mappe di previsione: oggi ore 07/L – Forecast Maps: today 07/L](#)
5. [Mappe di previsione: oggi ore 13/L – Forecast Maps: today 13/L](#)
6. [Mappe di previsione: oggi ore 19/L – Forecast Maps: today 19/L](#)
7. [Tempo previsto oggi a Baia Terra Nova – Weather Forecast for today at Terra Nova Bay](#)
8. [Mappe di previsione: domani ore 01/L – Forecast Maps: tomorrow 01/L](#)
9. [Mappe di previsione: domani ore 07/L – Forecast Maps: tomorrow 07/L](#)
10. [Mappe di previsione: domani ore 13/L – Forecast Maps: tomorrow 13/L](#)
11. [Mappe di previsione: domani ore 19/L – Forecast Maps: tomorrow 19/L](#)
12. [Tempo previsto domani a Baia Terra Nova – Weather Forecast for tomorrow at Terra Nova Bay](#)
13. [Tendenza per dopodomani a Baia Terra Nova – Weather Tendency for the day after tomorrow at Terra Nova Bay](#)
14. [Valori estremi di ieri – Extreme Values of Yesterday](#)
15. [Andamento delle Temperature durante la Spedizione](#)
16. [Andamento del vento massimo durante la Spedizione](#)
17. [Contatti - Contacts](#)



WEATHER

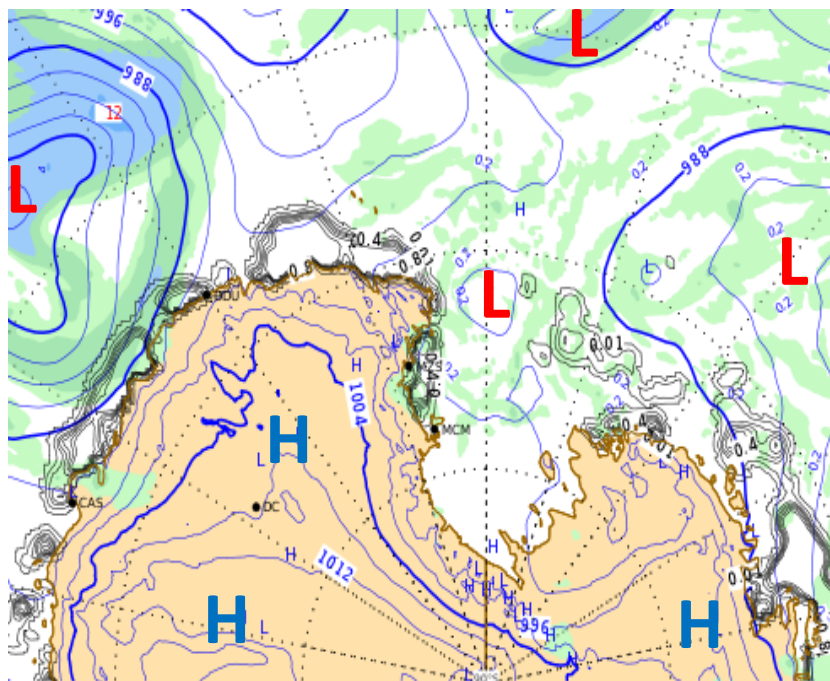
Meteorological observations and forecasts



Sunday 28/01/2018

Sea Level Pressure + Precipitation at 07:00

Latest Report



MARIO ZUCHELLI Station
 2018-01-27 17:14:00 UTC (74° 41' 45.3" S, 164° 05' 31.8" E)
<http://www.climantartide.it>

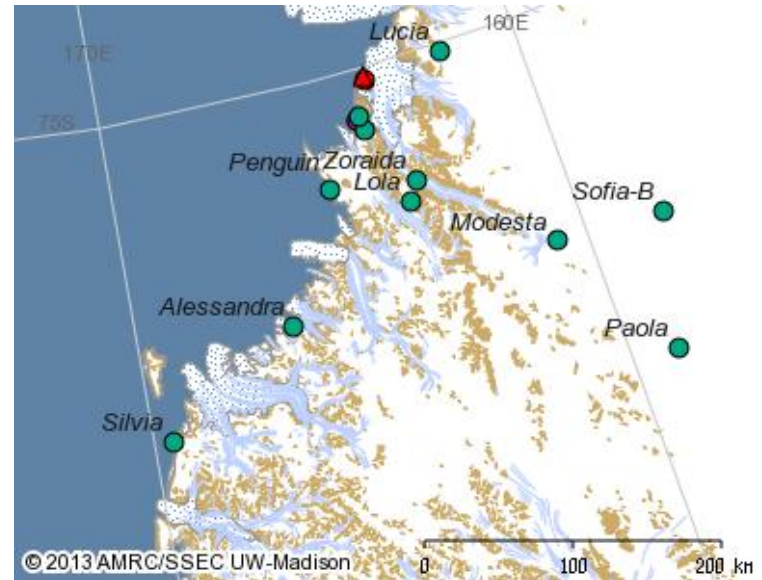
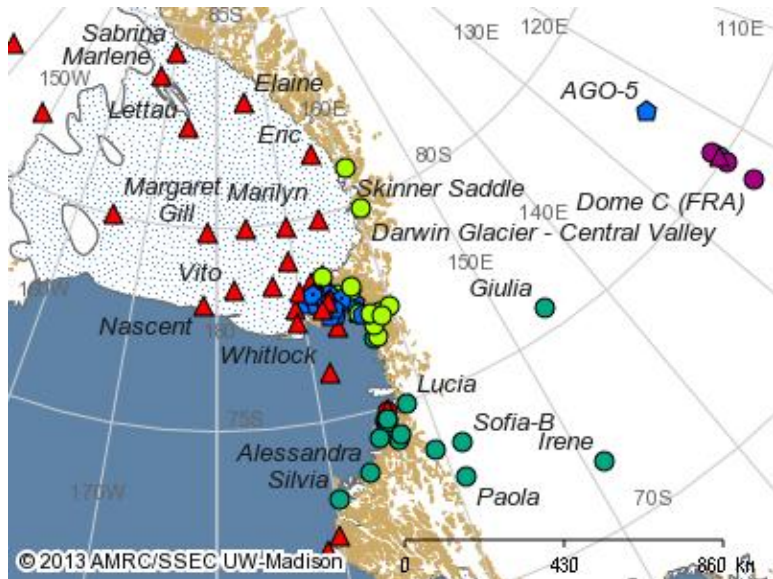
	Pressure (mba)	980.8
	Temperature (C°)	-4.8
	Wind Speed (knt)	11.8
	Relative Humidity (%)	48
	Sun Radiation (W/m ²)	54

VENTO AREA BOULDER: WSW 25 KT (06:20 loc time recorded)

Automatic Weather Stations (AWS) Updates

AWS	Datetime UTC	Wind Direction [°]	Wind Speed [kts]	Wind Gust [kts]	Temperature [°C]	MAX_Temp [°C]	MIN_Temp [°C]	Humidity [%]	Pressure [hPa]
Alessandra	2018-01-27 16:00	60	7	9	-4.9	-4.9	-5.1	92	971.7
Arelis	2018-01-27 16:00	310	3	6	-5.1	-5.1	-6.0	11	973.2
Concordia	2018-01-27 16:00	260	6	6	-42.9	-41.2	-43.4	60	648.8
Eneide	2018-01-27 16:00	280	13	26	-4.4	-3.1	-5.1	43	980.3
Giulia	2018-01-27 16:00	220	8	11	-36.7	-35.9	-36.7	66	717.8
Lola	2018-01-27 16:00	90	4	6	-15.4	-15.1	-15.8	84	803.7
Modesta	2018-01-27 16:00	300	11	17	-28.6	-28.1	//	70	767.8
Paola	2018-01-07 14:00	80	6	7	-21.6	-21.3	-22.2	82	//
Rita	2018-01-27 16:00	260	22	44	-7.2	-7.1	-9.4	52	958.2
Silvia	2018-01-27 16:00	250	2	6	-7.3	-7.2	-8.6	//	926.6
Sofiab	2018-01-27 16:00	160	8	13	-16.6	-16.2	-17.0	88	811.5
Zoraida	2018-01-27 16:00	300	26	43	-14.6	-14.0	-14.8	57	887.3

N.B. I dati presenti non sono validati e quindi non adatti ad un uso operativo.

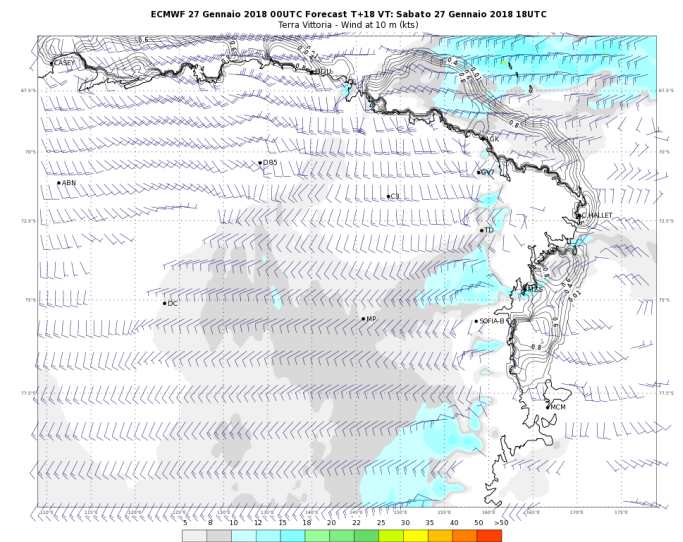
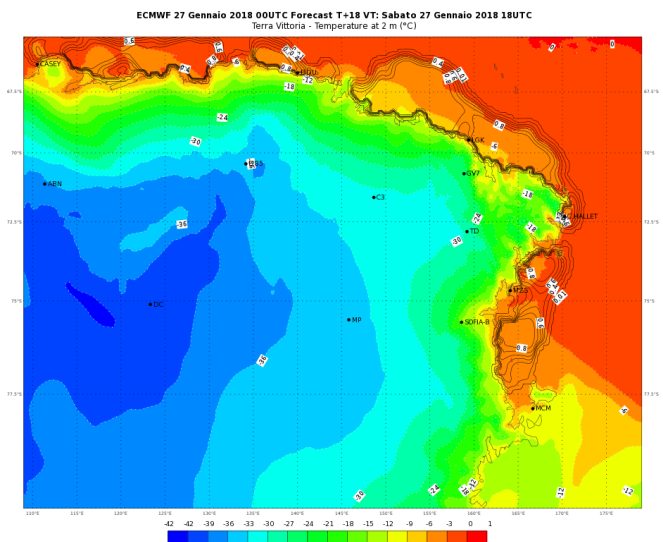
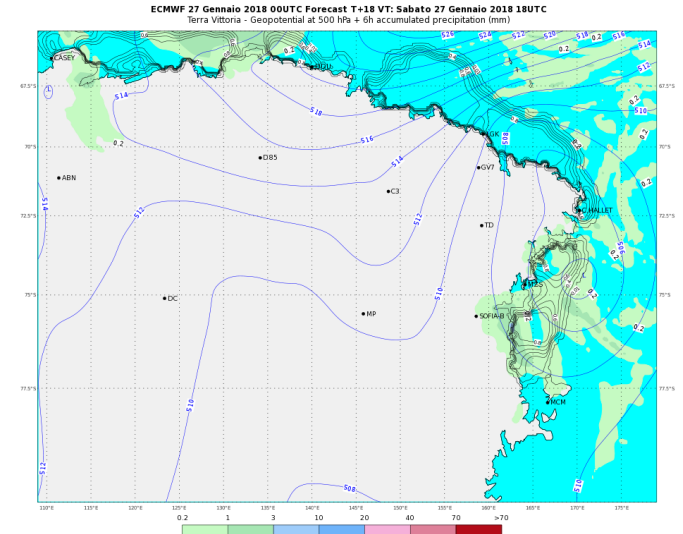
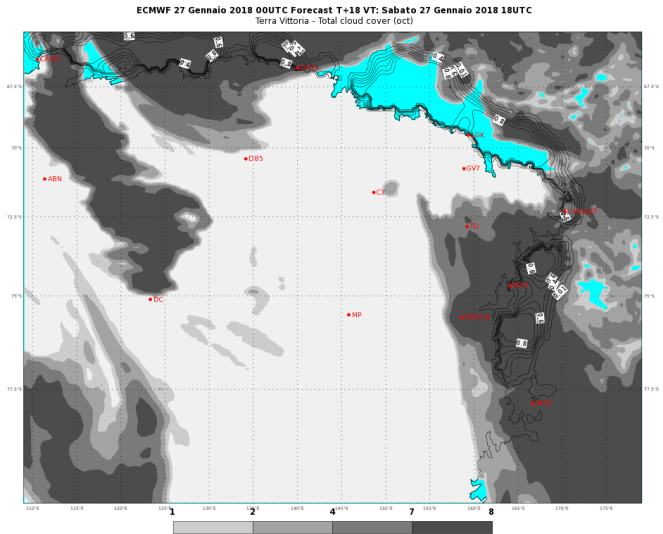


[Indietro all'indice – back to index](#)

PREVISIONI - FORECASTS

OGGI - ORE 07 LT

TODAY - 07 LT

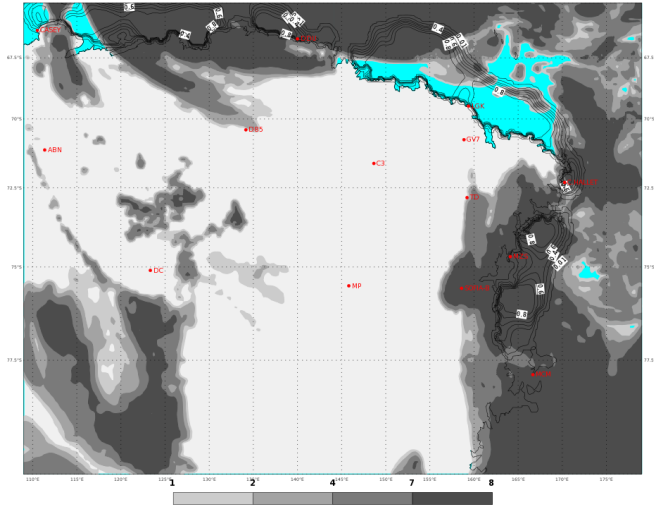


PREVISIONI - FORECASTS

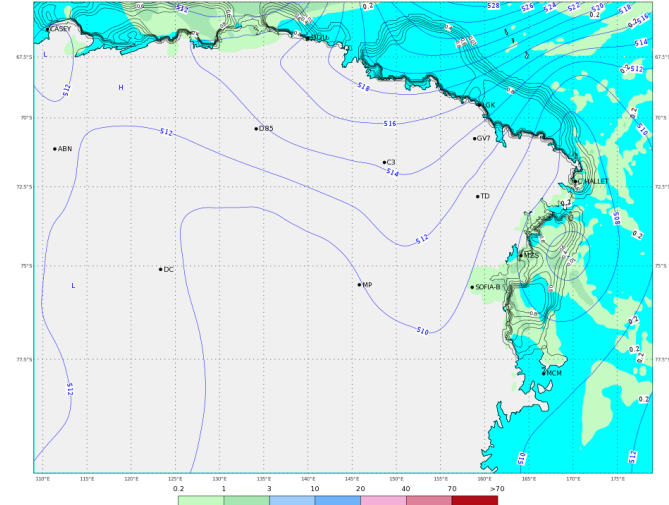
OGGI - ORE 13 LT

TODAY - 13 LT

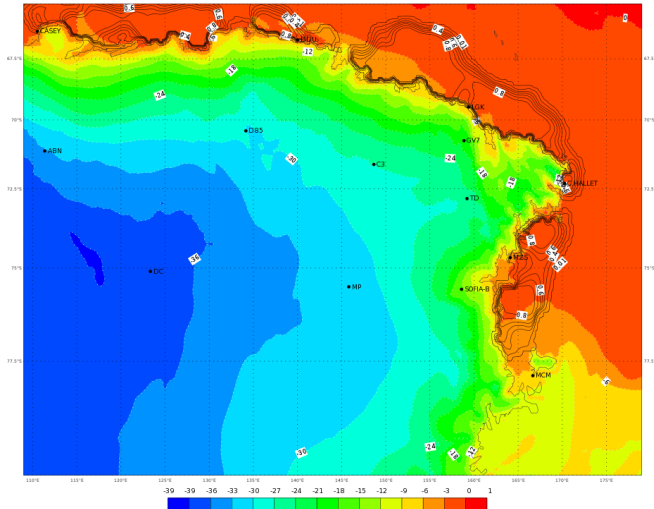
ECMWF 27 Gennaio 2018 00UTC Forecast T+24 VT: Domenica 28 Gennaio 2018 00UTC
Terra Vittoria - Total cloud cover (oct)



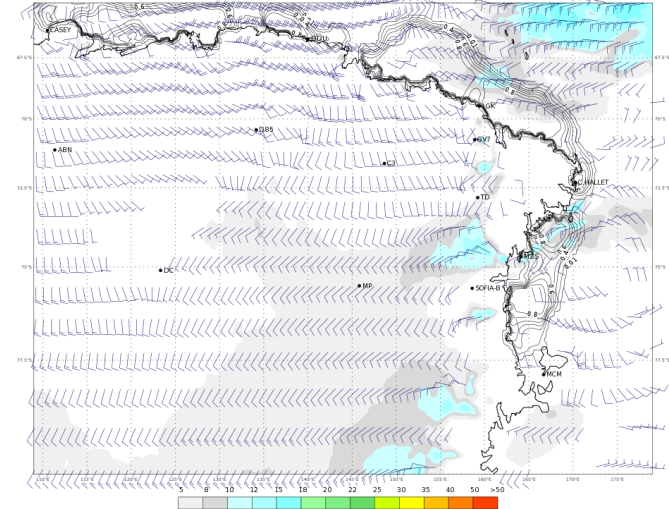
ECMWF 27 Gennaio 2018 00UTC Forecast T+24 VT: Domenica 28 Gennaio 2018 00UTC
Terra Vittoria - Geopotential at 500 hPa + 6h accumulated precipitation (mm)



ECMWF 27 Gennaio 2018 00UTC Forecast T+24 VT: Domenica 28 Gennaio 2018 00UTC
Terra Vittoria - Temperature at 2 m (°C)



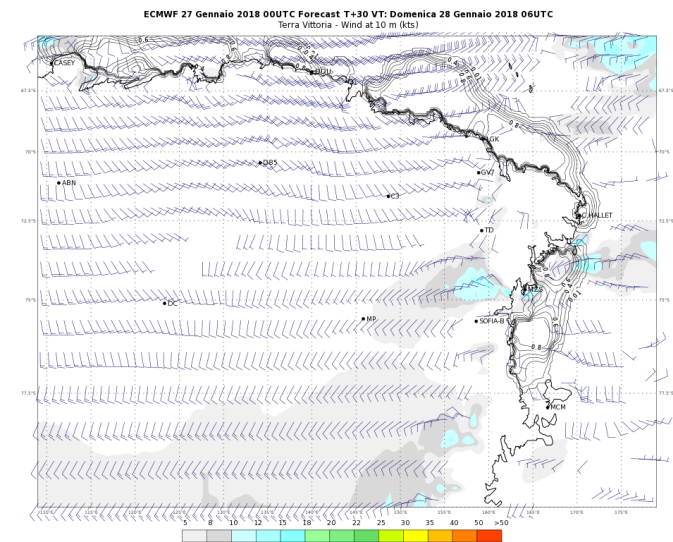
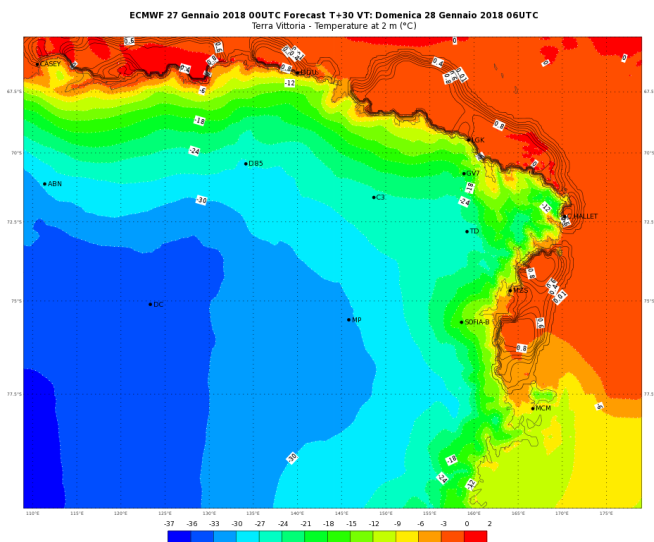
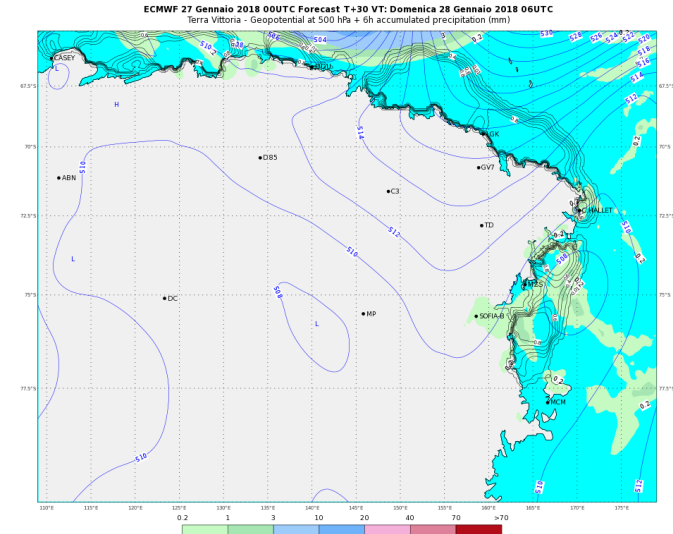
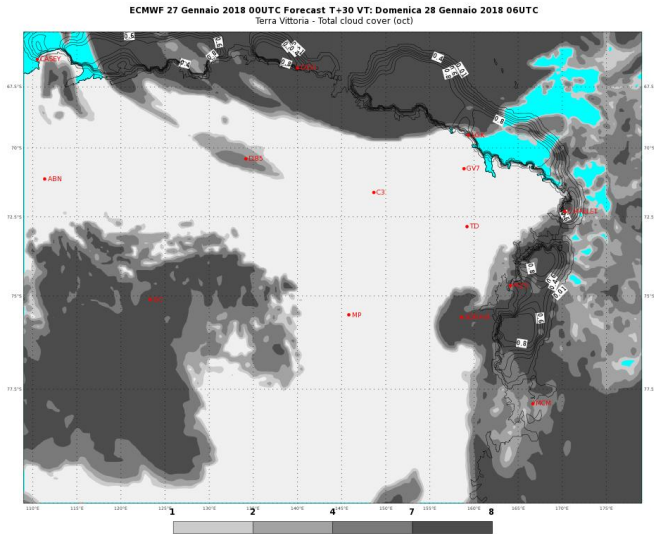
ECMWF 27 Gennaio 2018 00UTC Forecast T+24 VT: Domenica 28 Gennaio 2018 00UTC
Terra Vittoria - Wind at 10 m (kts)



PREVISIONI - FORECASTS




OGGI - ORE 19 LT

TODAY - 19 LT



WEATHER FORECAST FOR TODAY AT TERRA NOVA BAY

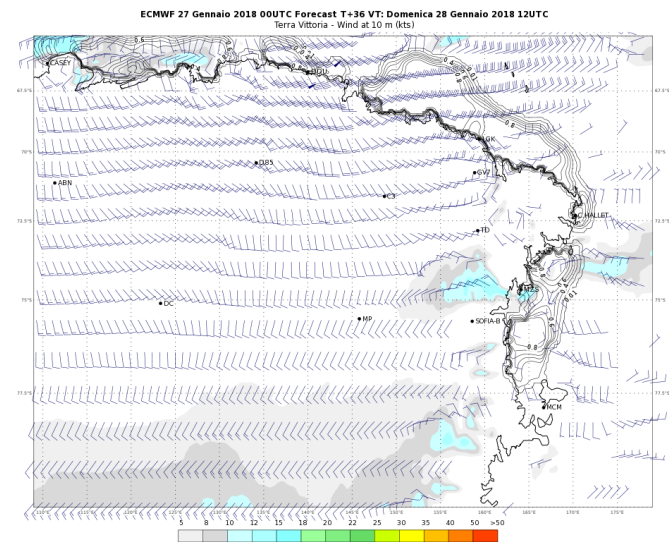
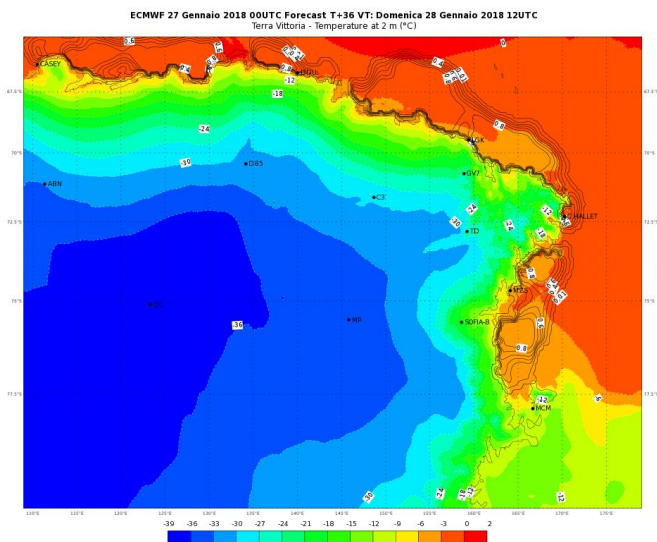
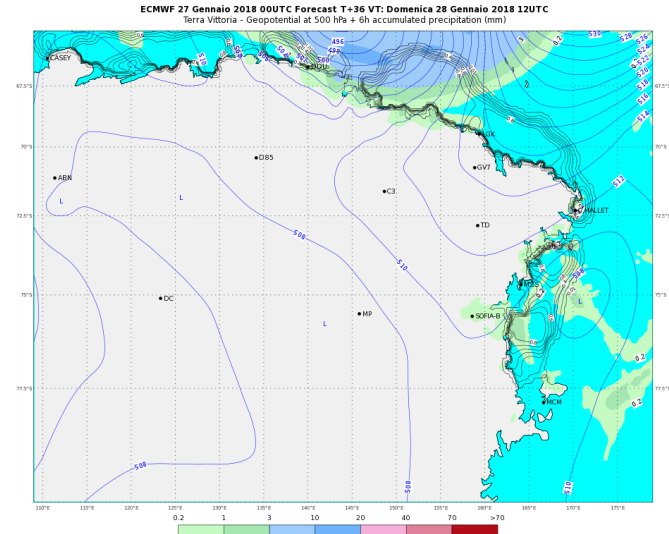
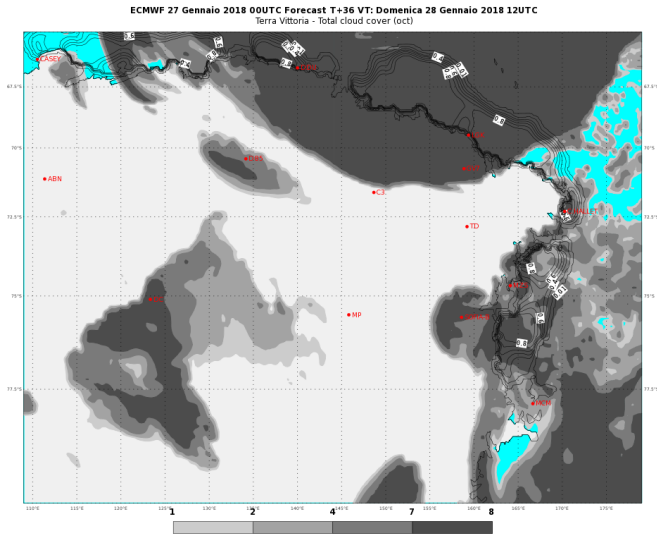
Sunday 28/01/2018

	ORE 07	ORE 13	ORE 19
CIELO			
FENOMENI	NIL	POSSIBILE DEBOLE NEVISCHIO	NIL
VENTO MZS	WSW 15/25 KT	WSW 10/20 KT	WSW 10/20 KT
VENTO BOULDER	WSW 20/35 KT	WSW 15/30 KT	WSW 15/30 KT
TEMPERATURA [°C]	-06/-04 °C	-05/-03 °C	-05/-03 °C
WIND CHILL [°C]	-16/-13 °C	-14/-11 °C	-14/-11 °C
STATO DEL MARE	POCO MOSSO O MOSSO	POCO MOSSO O MOSSO	POCO MOSSO O MOSSO

PREVISIONI - FORECASTS

DOMANI - ORE 01 LT

TOMORROW - 01 LT

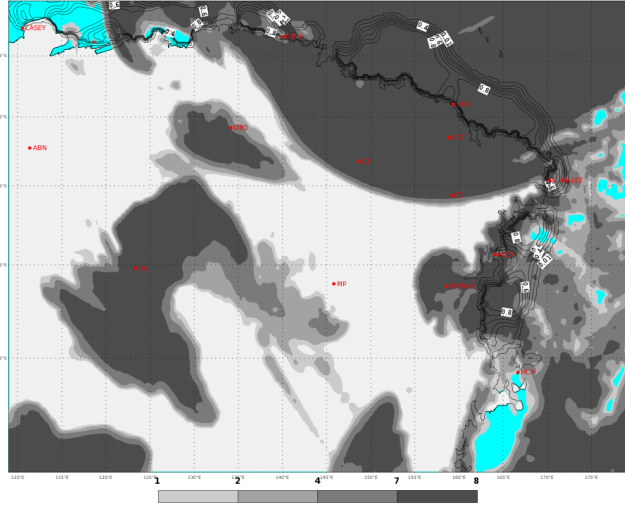


PREVISIONI - FORECASTS

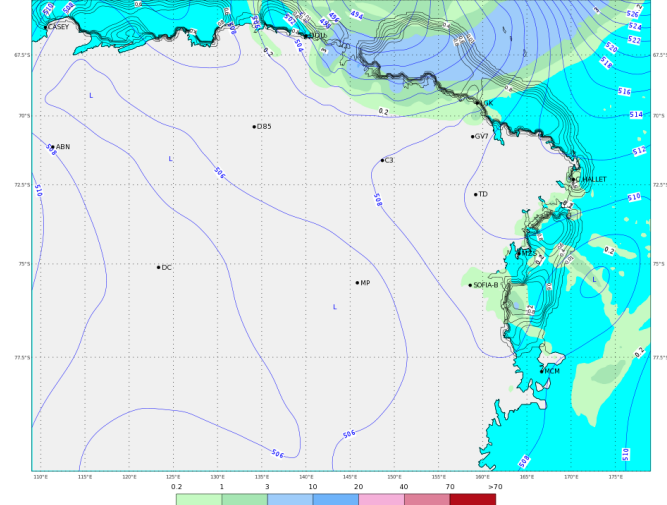
DOMANI - ORE 07 LT

TOMORROW - 07 LT

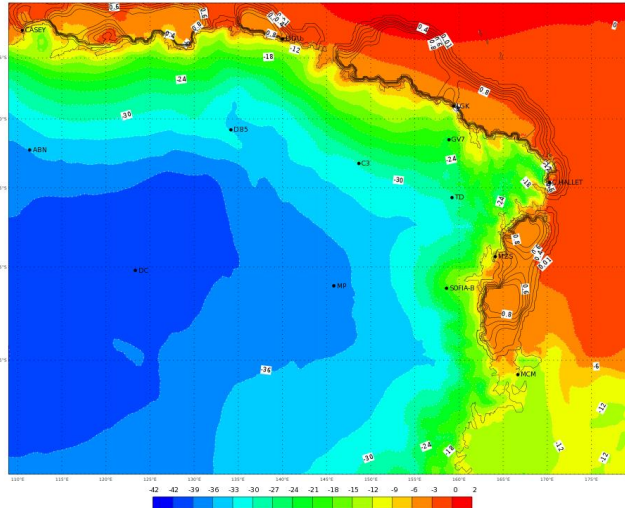
ECMWF 27 Gennaio 2018 00UTC Forecast T+42 VT: Domenica 28 Gennaio 2018 18UTC
Terra Vittoria - Total cloud cover (oct)



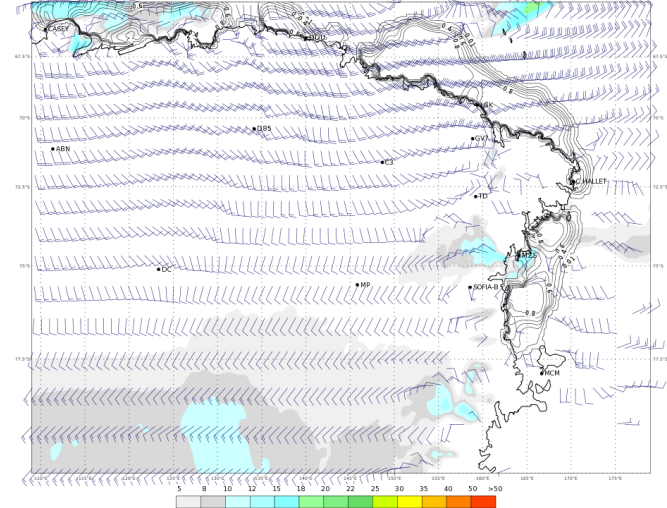
ECMWF 27 Gennaio 2018 00UTC Forecast T+42 VT: Domenica 28 Gennaio 2018 18UTC
Terra Vittoria - Geopotential at 500 hPa + 6h accumulated precipitation (mm)



ECMWF 27 Gennaio 2018 00UTC Forecast T+42 VT: Domenica 28 Gennaio 2018 18UTC
Terra Vittoria - temperature at 2 m (°C)



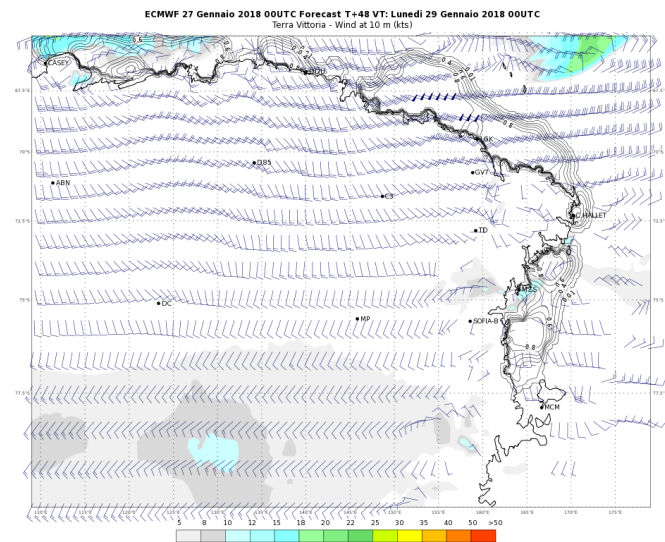
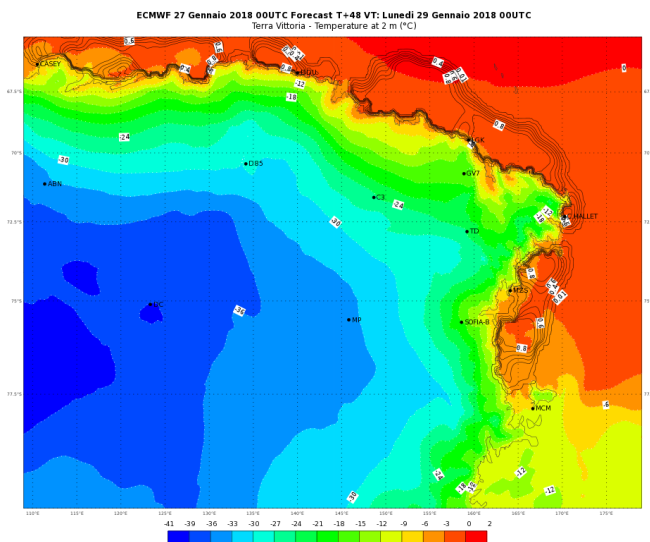
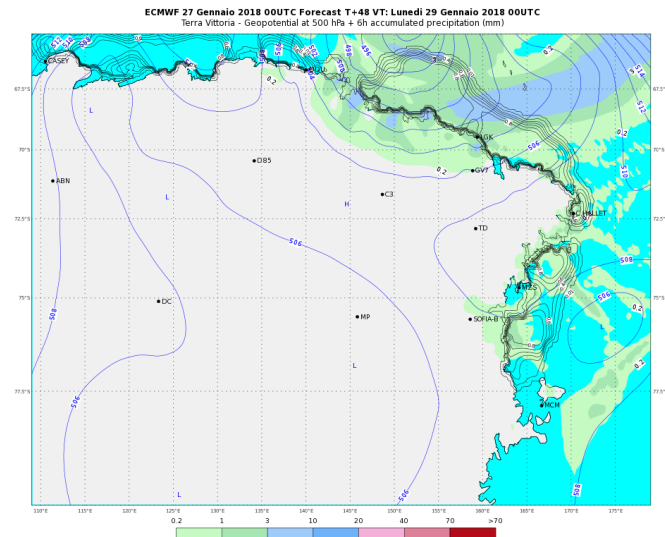
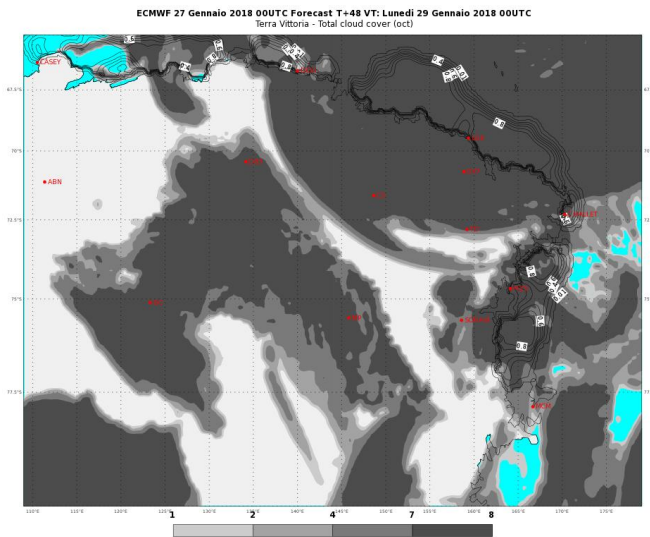
ECMWF 27 Gennaio 2018 00UTC Forecast T+42 VT: Domenica 28 Gennaio 2018 18UTC
Terra Vittoria - Wind at 10 m (kts)



PREVISIONI - FORECASTS

DOMANI - ORE 13 LT

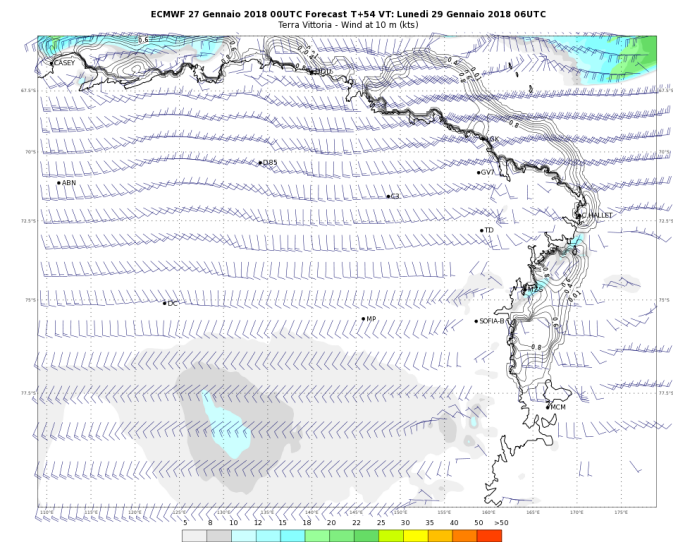
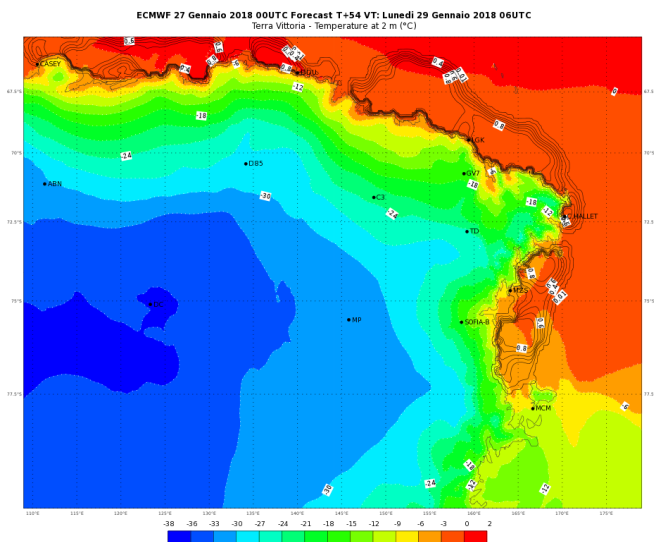
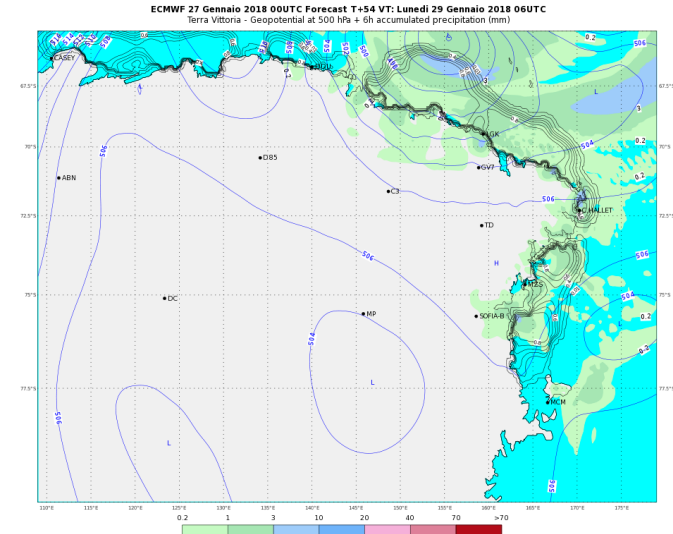
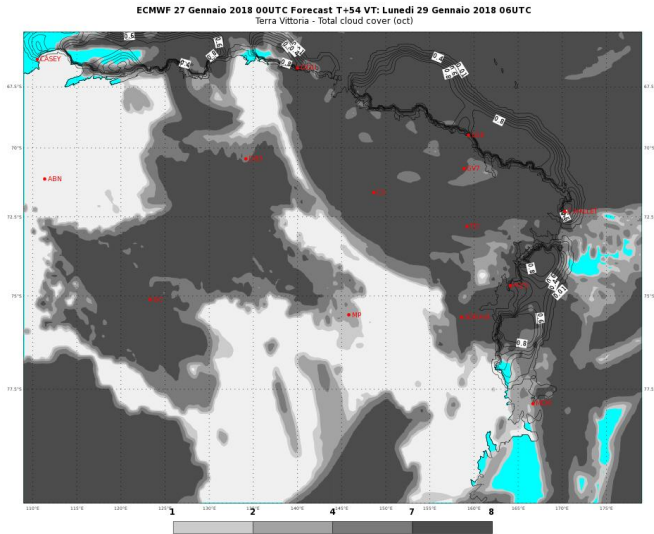
TOMORROW - 13 LT



PREVISIONI - FORECASTS




DOMANI - ORE 19 LT

TOMORROW - 19 LT





WEATHER FORECAST FOR TOMORROW AT TERRA NOVA BAY

Monday 29/01/2018

	ORE 07	ORE 13	ORE 19
CIELO			
FENOMENI	NIL	POSSIBILE NEVE DEBOLE	NEVE DEBOLE
VENTO MZS	WSW 10/20 KT	WSW 10/20 KT	WSW 10/20 KT
VENTO BOULDER	WSW 15/25 KT	WSW 15/25 KT	WSW 15/25 KT
TEMPERATURA [°C]	-05/-03 °C	-06/-04 °C	-07/-05 °C
WIND CHILL [°C]	-14/-11 °C	-16/-13 °C	-17/-14 °C
STATO DEL MARE	POCO MOSSO O MOSSO	POCO MOSSO O MOSSO	POCO MOSSO O MOSSO

WEATHER TENDENCY AT TERRA NOVA BAY

Tuesday 30/01/2018

	MATTINO	POMERIGGIO
CIELO		
FENOMENI	NEVE DEBOLE	NIL
VENTO MZS	WSW 15/25 KT	WSW 15/25 KT
VENTO BOULDER	WSW 20/30 KT	WSW 20/30 KT
TEMPERATURA [°C]	-07/-05 °C	-07/-05 °C
WIND CHILL [°C]	-18/-15 °C	-18/-15 °C
STATO DEL MARE	POCO MOSSO O MOSSO	MOSSO

http://mzs-pdc.mzs.pnra.it/meteo/bollettino_meteo.pdf

[Indietro all'indice – back to index](#)



Extreme Values of Yesterday



27/01/2018 UTC time (13:00 26/01 - 13:00 27/01)		
MAX temperature	(ore 15:35/L)	-1.6 °C
MIN temperature	(ore 05:08/L)	-4.1 °C
MAX humidity	(ore 19:16/L)	100 %
MIN humidity	(ore 16:03/L)	68 %
MAX wind direction/speed	(ore 23:55/L)	281/40.3 KT

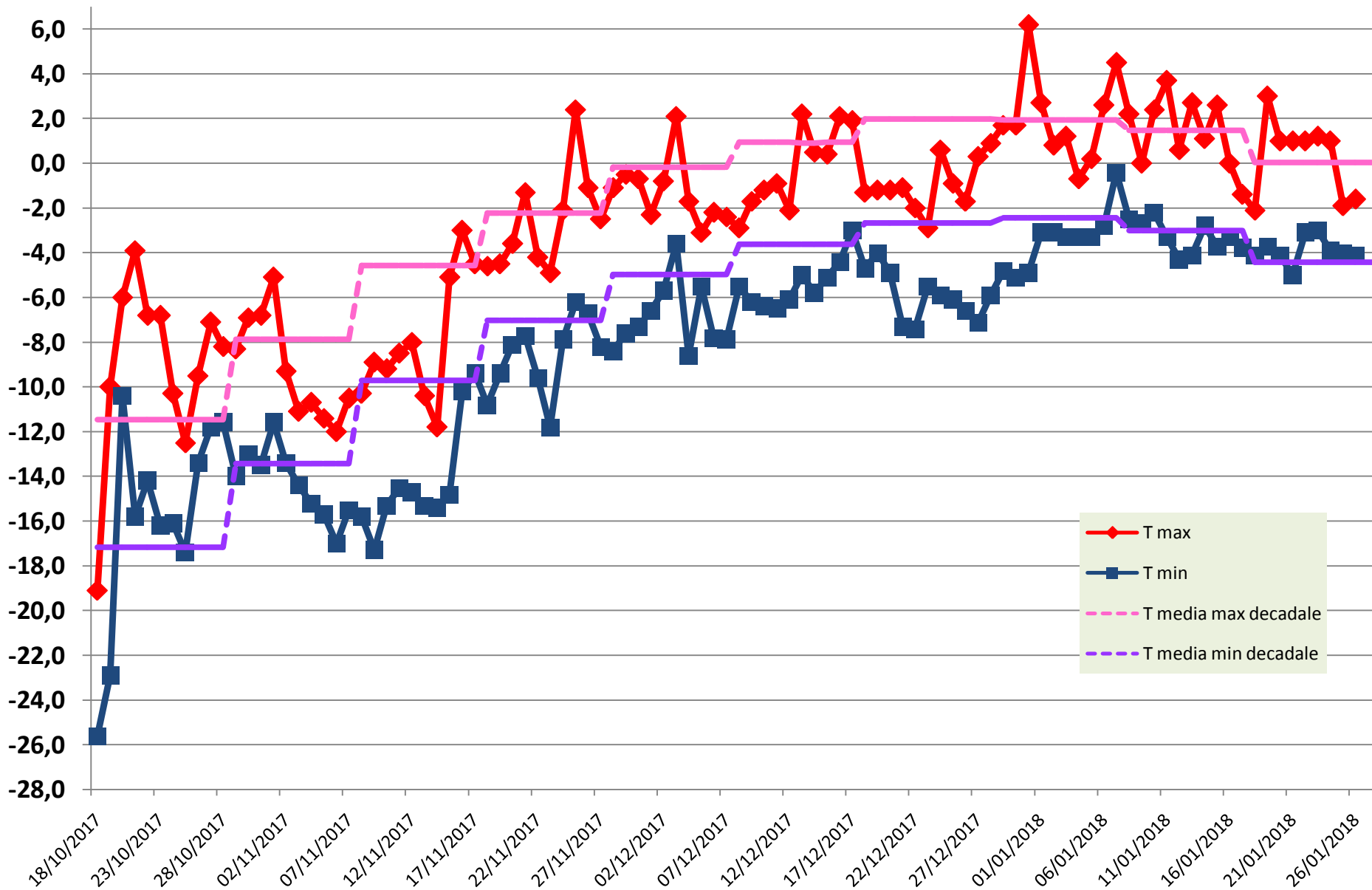
Remark: *the reported values are referred to the previous day in terms of Universal Time and not in local time (UTC+13).*



Temperature measured during the XXXIII Expedition



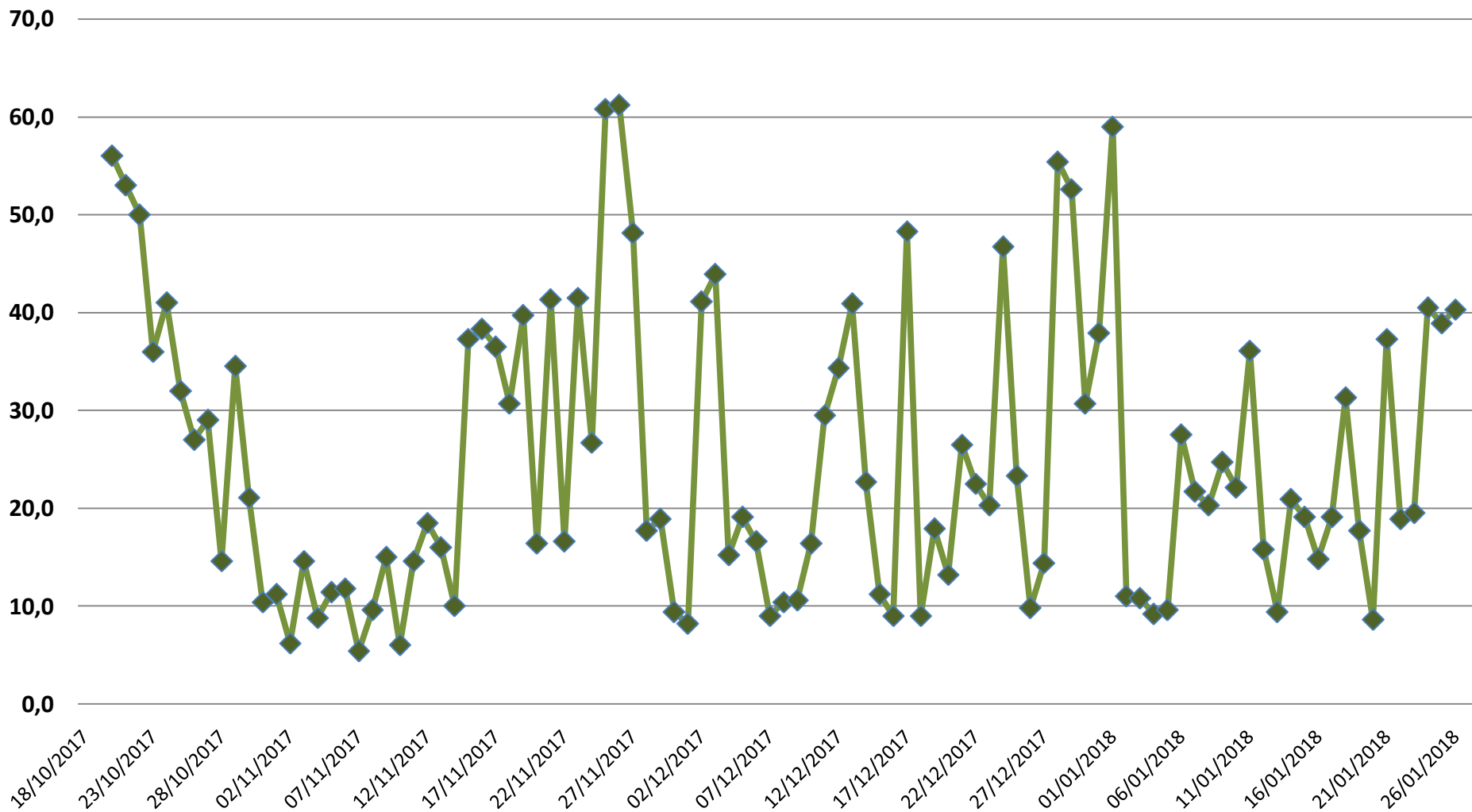
ENEIDE weather station (MZS) - Antarctic Climatology Observatory





MAX wind [kt] measured during the XXXIII Expedition

ENEIDE weather station (MZS) - Antarctic Climatology Observatory



**Per ulteriori informazioni contattare
l'Ufficio Meteorologico di MZS
int. 510**

**For further information please contact
MZS Met Office
ext. 510**

AVVERTENZA/WARNING

*Le presenti informazioni NON sono destinate alla pianificazione di volo e/o pre-volo
The informations here presented are NOT intended for flight planning and/or pre-flight*

[*Indietro all'indice – back to index*](#)