



WEATHER

Meteorological observations and forecasts

Tuesday 30/01/2018

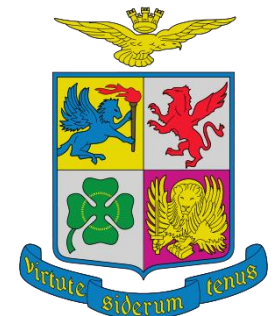
MET Office - "Mario Zucchelli" Base - Terranova Bay

Ten. Col. Luigi Verzelletti
Cap. Francesco Mariella



Agenzia nazionale per le nuove tecnologie,
l'energia e lo sviluppo economico sostenibile

Information NOT intended for flight planning and pre-flight



Indice dei contenuti Table of Contents

Puoi saltare direttamente sull'argomento di interesse cliccandoci sopra

Jump directly to the issue of your interest just clicking on it

1. [Situazione – Situation](#)
2. [Ultime Misure delle Stazioni Meteo Automatiche - Last Measurements from Automatic Weather Stations](#)
3. [Dati attuali a MZS – Current data at MZS \(ENEIDE – ‘Campo Meteo’\)](#)
4. [Mappe di previsione: oggi ore 07/L – Forecast Maps: today 07/L](#)
5. [Mappe di previsione: oggi ore 13/L – Forecast Maps: today 13/L](#)
6. [Mappe di previsione: oggi ore 19/L – Forecast Maps: today 19/L](#)
7. [Tempo previsto oggi a Baia Terra Nova – Weather Forecast for today at Terra Nova Bay](#)
8. [Mappe di previsione: domani ore 01/L – Forecast Maps: tomorrow 01/L](#)
9. [Mappe di previsione: domani ore 07/L – Forecast Maps: tomorrow 07/L](#)
10. [Mappe di previsione: domani ore 13/L – Forecast Maps: tomorrow 13/L](#)
11. [Mappe di previsione: domani ore 19/L – Forecast Maps: tomorrow 19/L](#)
12. [Tempo previsto domani a Baia Terra Nova – Weather Forecast for tomorrow at Terra Nova Bay](#)
13. [Tendenza per dopodomani a Baia Terra Nova – Weather Tendency for the day after tomorrow at Terra Nova Bay](#)
14. [Valori estremi di ieri – Extreme Values of Yesterday](#)
15. [Andamento delle Temperature durante la Spedizione](#)
16. [Andamento del vento massimo durante la Spedizione](#)
17. [Contatti - Contacts](#)



WEATHER

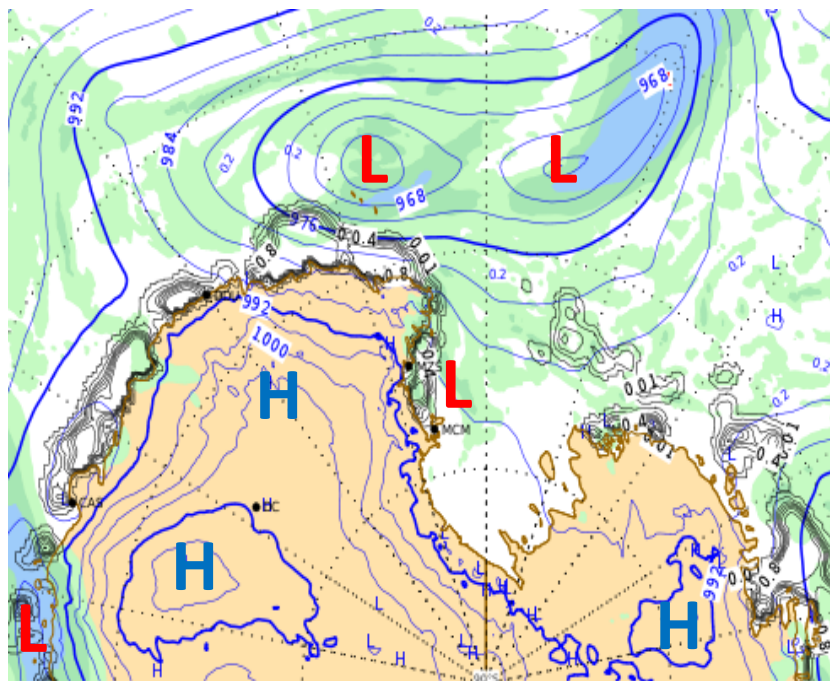
Meteorological observations and forecasts



Tuesday 30/01/2018

Sea Level Pressure + Precipitation at 07:00

Latest Report



MARIO ZUCHELLI Station

2018-01-29 17:02:00 UTC (74° 41' 45.3" S, 164° 05' 31.8" E)
<http://www.climantartide.it>

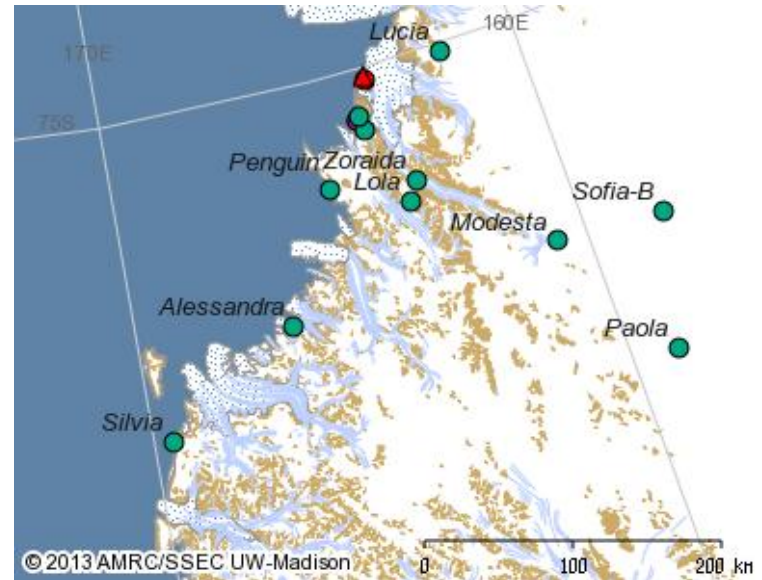
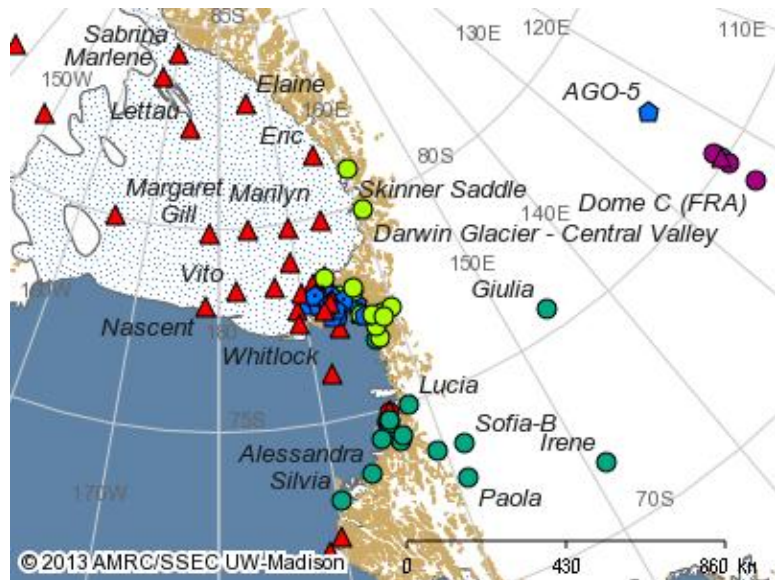
	Pressure (mba)	978.9
	Temperature (C°)	-5.4
	Wind Speed (knt)	2.0
	Relative Humidity (%)	65
	Sun Radiation (W/m ²)	67

VENTO AREA BOULDER: NE 03 KT (06:15 loc time recorded)

Automatic Weather Stations (AWS) Updates

AWS	Datetime UTC	Wind Direction [°]	Wind Speed [kts]	Wind Gust [kts]	Temperature [°C]	MAX_Temp [°C]	MIN_Temp [°C]	Humidity [%]	Pressure [hPa]
Alessandra	2018-01-29 16:00	220	2	9	-7.1	-6.9	-7.1	81	970.0
Arelis	2018-01-29 16:00	240	1	6	-6.8	-6.7	-7.3	11	971.3
Concordia	2018-01-29 16:00	170	5	6	-45.2	-43.9	-45.2	58	645.2
Eneide	2018-01-29 16:00	280	3	15	-5.3	-5.2	-5.7	57	979.2
Giulia	2018-01-29 16:00	230	8	11	-40.6	-40.2	-40.6	62	714.2
Lola	2018-01-29 16:00	190	9	11	-18.1	-18.1	-18.6	81	801.4
Modesta	2018-01-29 16:00	190	3	9	-23.0	-22.9	-23.4	80	764.0
Paola	2018-01-29 16:00	170	4	9	-29.6	-29.1	-29.6	73	//
Rita	2018-01-29 16:00	290	8	25	-7.1	-6.6	-7.4	63	957.7
Silvia	2018-01-29 16:00	250	17	22	-10.0	-9.9	-10.1	//	921.9
Sofiab	2018-01-29 16:00	220	12	18	-19.4	-19.0	-19.4	75	809.4
Zoraida	2018-01-29 16:00	330	13	19	-13.1	-12.7	-13.1	63	886.5

N.B. I dati presenti non sono validati e quindi non adatti ad un uso operativo.

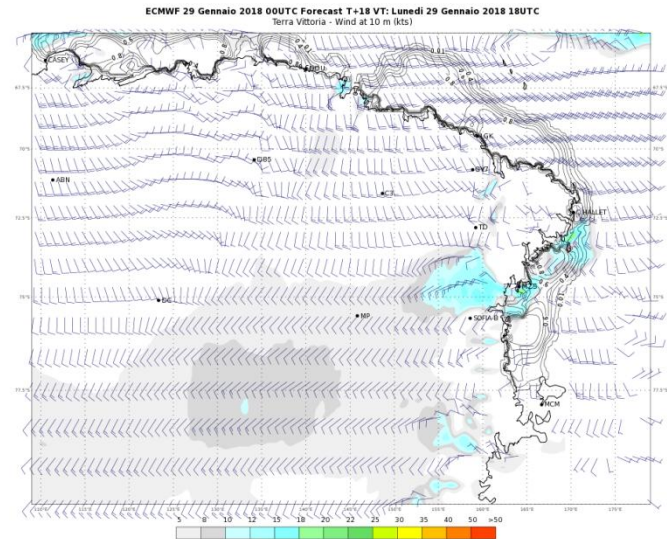
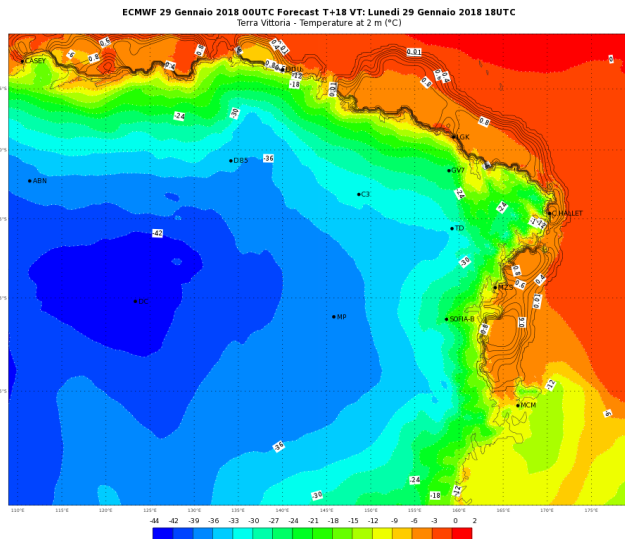
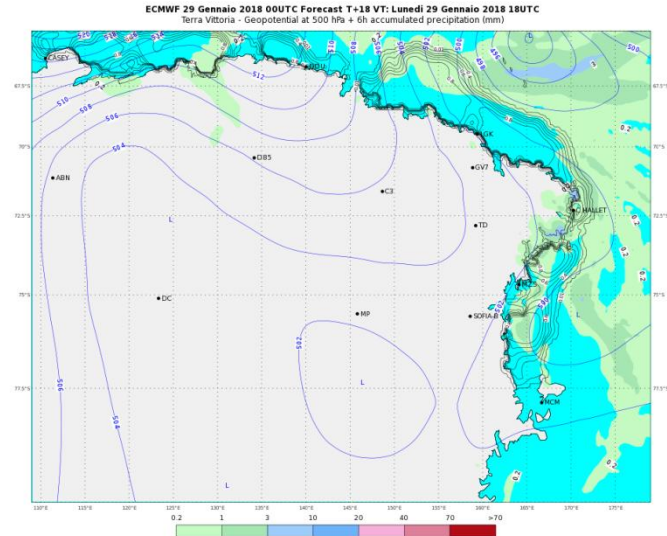
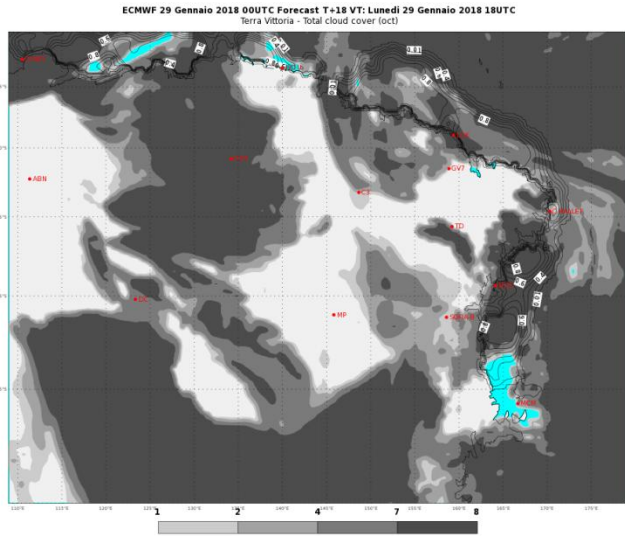


[Indietro all'indice – back to index](#)

PREVISIONI - FORECASTS

OGGI - ORE 07 LT

TODAY - 07 LT

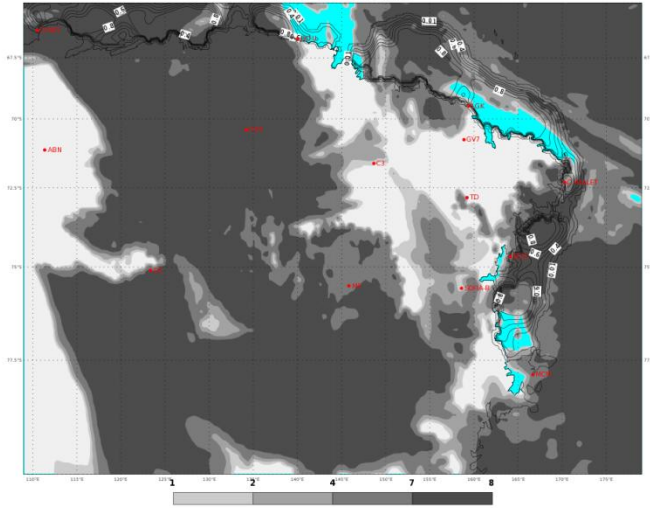


PREVISIONI - FORECASTS

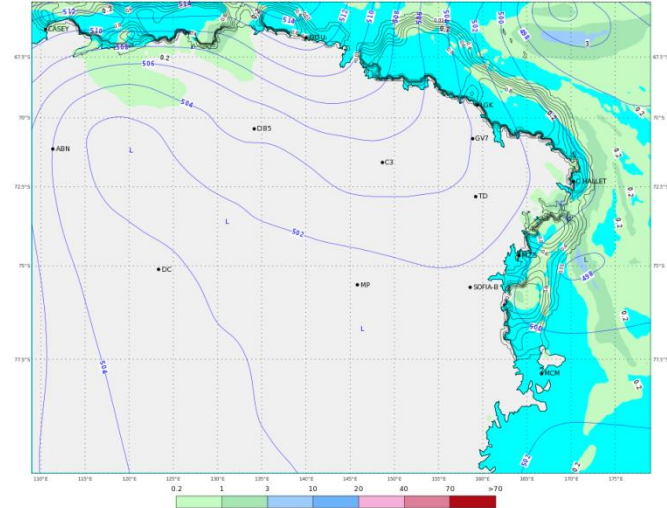
OGGI - ORE 13 LT

TODAY - 13 LT

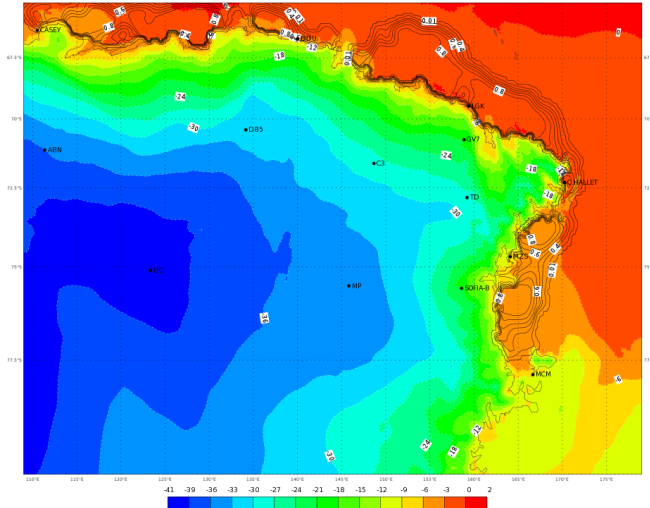
ECMWF 29 Gennaio 2018 00UTC Forecast T+24 VT: Martedì 30 Gennaio 2018 00UTC
Terra Vittoria - Total cloud cover (oct)



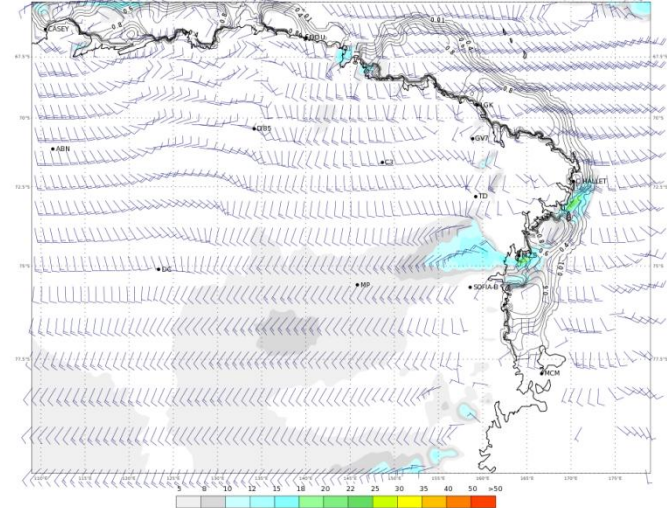
ECMWF 29 Gennaio 2018 00UTC Forecast T+24 VT: Martedì 30 Gennaio 2018 00UTC
Terra Vittoria - Geopotential at 500 hPa + 6h accumulated precipitation (mm)



ECMWF 29 Gennaio 2018 00UTC Forecast T+24 VT: Martedì 30 Gennaio 2018 00UTC
Terra Vittoria - Temperature at 2 m (°C)



ECMWF 29 Gennaio 2018 00UTC Forecast T+24 VT: Martedì 30 Gennaio 2018 00UTC
Terra Vittoria - Wind at 10 m (kts)

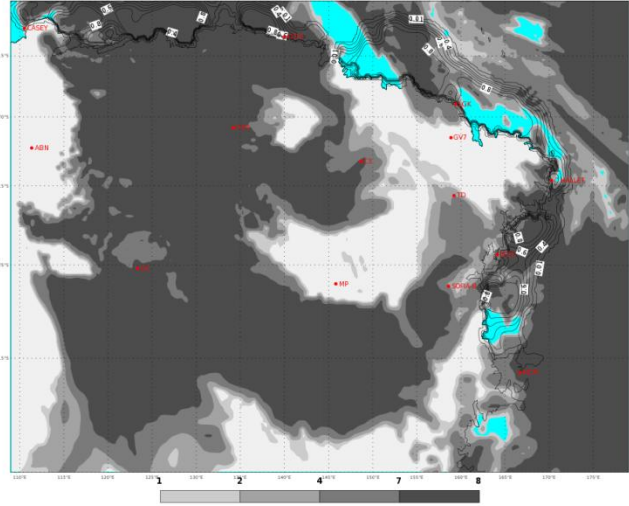


PREVISIONI - FORECASTS

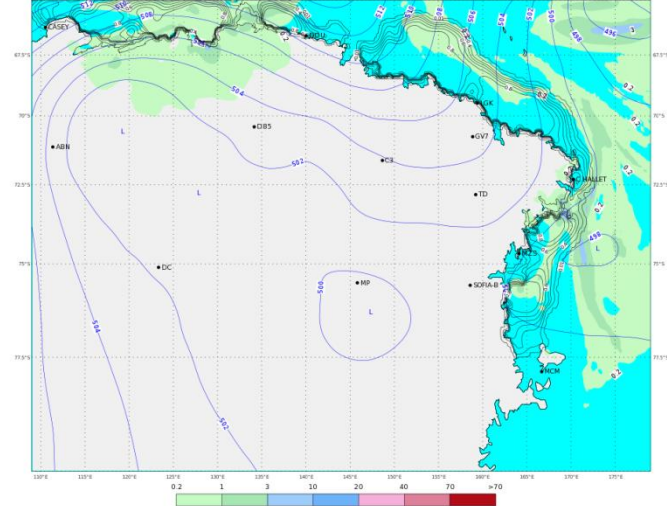
OGGI - ORE 19 LT

TODAY - 19 LT

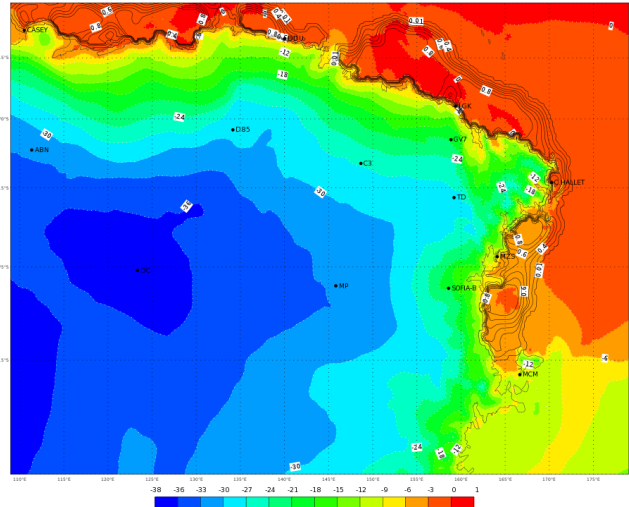
ECMWF 29 Gennaio 2018 00UTC Forecast T+30 VT: Martedì 30 Gennaio 2018 06UTC
Terra Vittoria - Total cloud cover (oct)



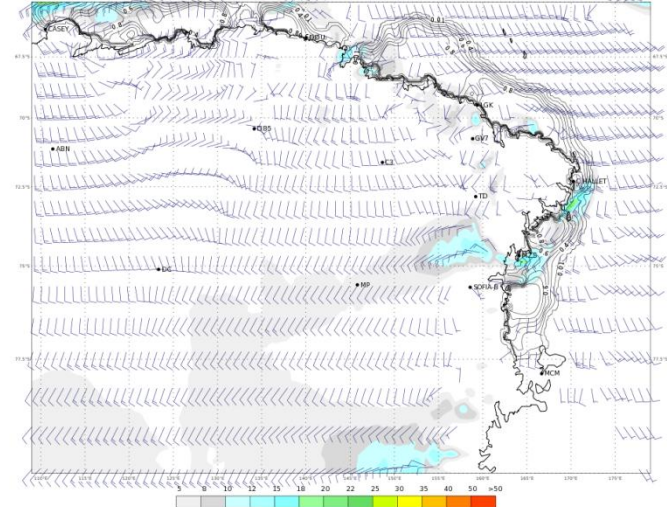
ECMWF 29 Gennaio 2018 00UTC Forecast T+30 VT: Martedì 30 Gennaio 2018 06UTC
Terra Vittoria - Geopotential at 500 hPa + 6h accumulated precipitation (mm)



ECMWF 29 Gennaio 2018 00UTC Forecast T+30 VT: Martedì 30 Gennaio 2018 06UTC
Terra Vittoria - Temperature at 2 m (°C)






ECMWF 29 Gennaio 2018 00UTC Forecast T+30 VT: Martedì 30 Gennaio 2018 06UTC
Terra Vittoria - Wind at 10 m (kts)



WEATHER FORECAST FOR TODAY AT TERRA NOVA BAY

Tuesday 30/01/2018

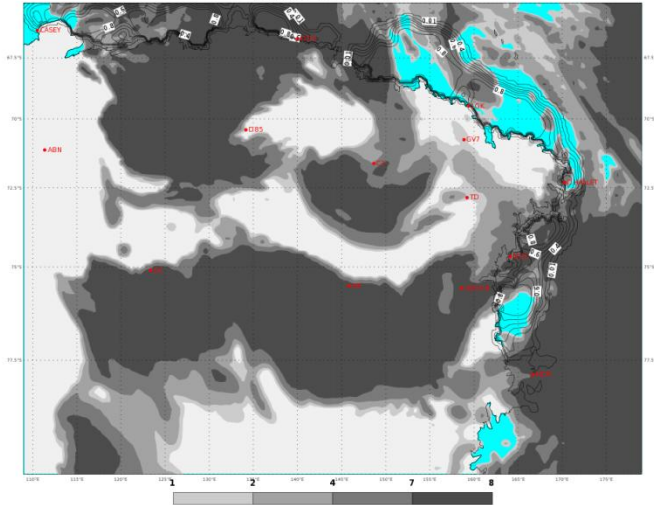
	ORE 07	ORE 13	ORE 19
CIELO			
FENOMENI	NIL	NIL	NIL
VENTO MZS	VRB 05 KT	WSW 05/10 KT	WSW 20/30 KT
VENTO BOULDER	VRB 07 KT	WSW 15/25 KT	WSW 25/35 KT
TEMPERATURA [°C]	-07/-05 °C	-08/-06 °C	-07/-05 °C
WIND CHILL [°C]	-11/-09 °C	-15/-12 °C	-19/-16 °C
STATO DEL MARE	POCO MOSSO O MOSSO	POCO MOSSO O MOSSO	POCO MOSSO O MOSSO

PREVISIONI - FORECASTS

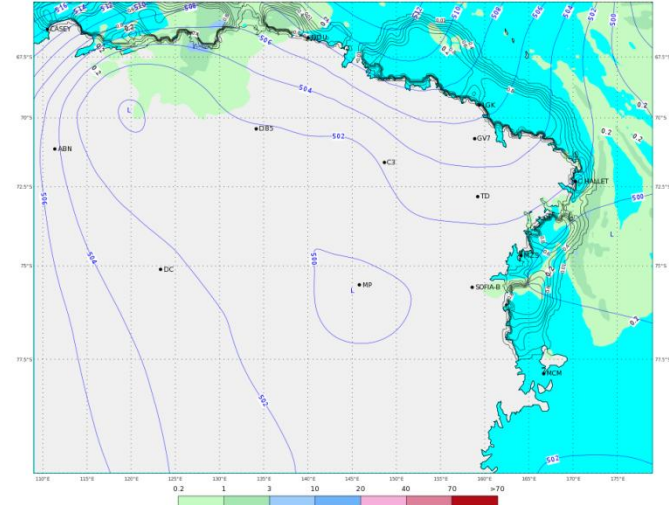
DOMANI - ORE 01 LT

TOMORROW - 01 LT

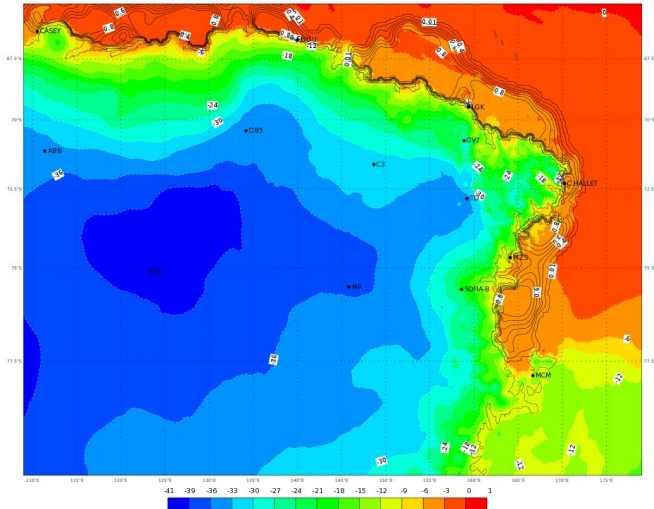
ECMWF 29 Gennaio 2018 00UTC Forecast T+36 VT: Martedì 30 Gennaio 2018 12UTC
Terra Vittoria - Total cloud cover (oct)



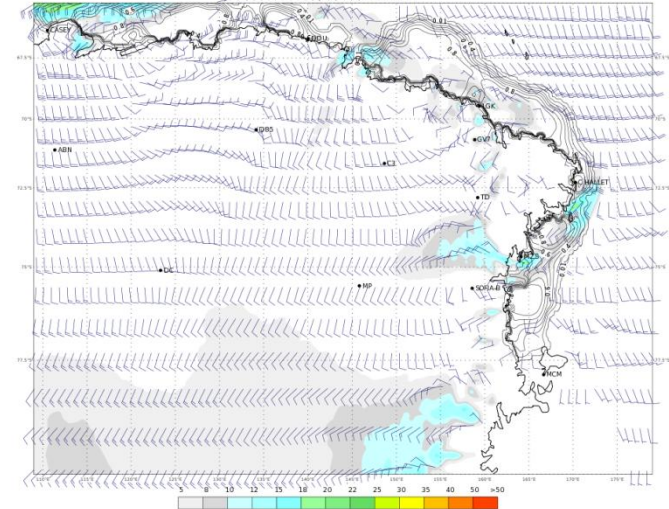
ECMWF 29 Gennaio 2018 00UTC Forecast T+36 VT: Martedì 30 Gennaio 2018 12UTC
Terra Vittoria - Geopotential at 500 hPa + 6h accumulated precipitation (mm)



ECMWF 29 Gennaio 2018 00UTC Forecast T+36 VT: Martedì 30 Gennaio 2018 12UTC
Terra Vittoria - Temperature at 2 m (°C)



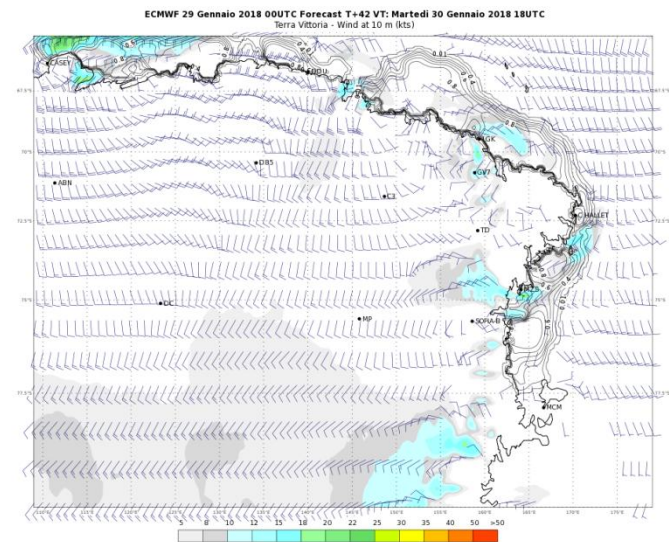
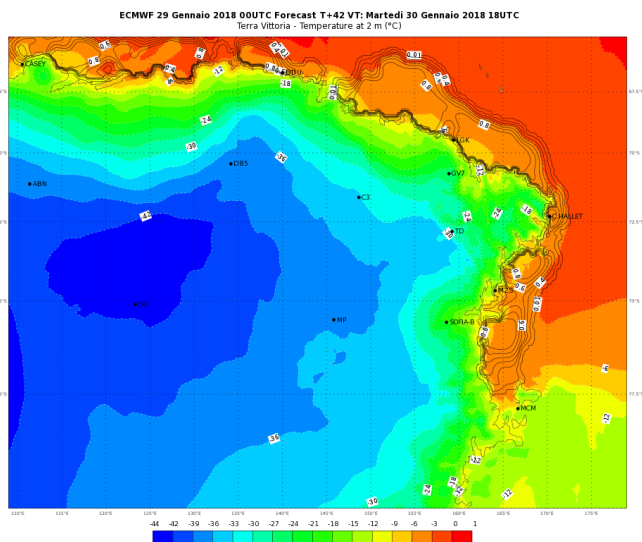
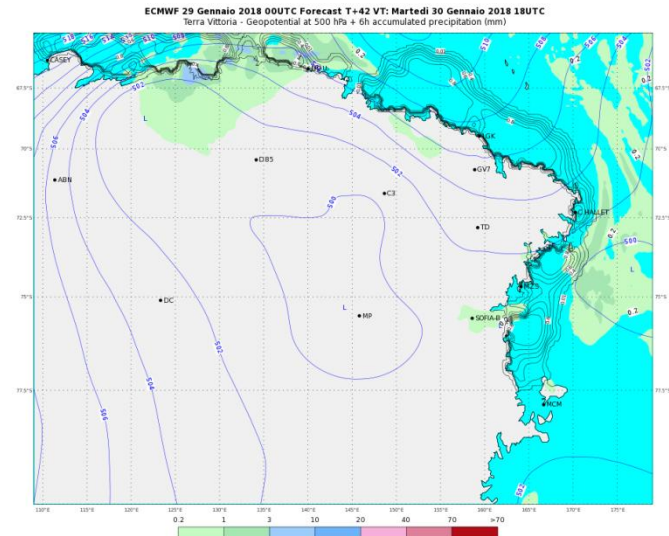
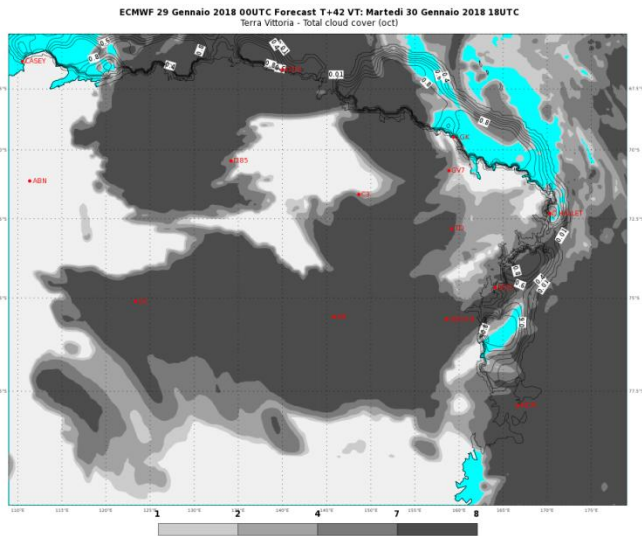
ECMWF 29 Gennaio 2018 00UTC Forecast T+36 VT: Martedì 30 Gennaio 2018 12UTC
Terra Vittoria - Wind at 10 m (kts)



PREVISIONI - FORECASTS

DOMANI - ORE 07 LT

TOMORROW - 07 LT

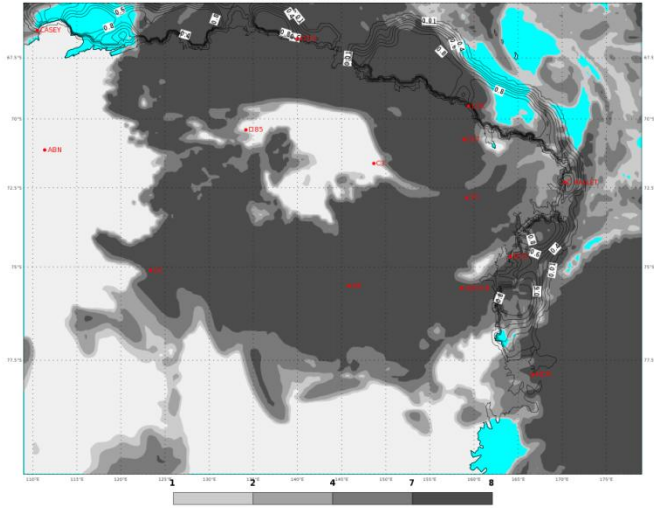


PREVISIONI - FORECASTS

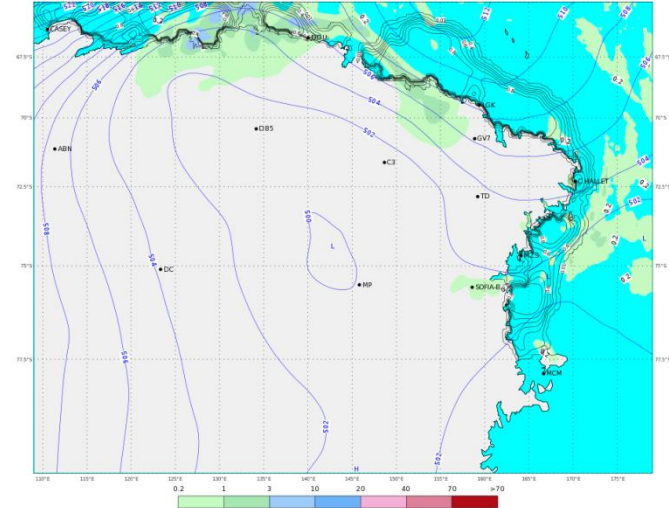
DOMANI - ORE 13 LT

TOMORROW - 13 LT

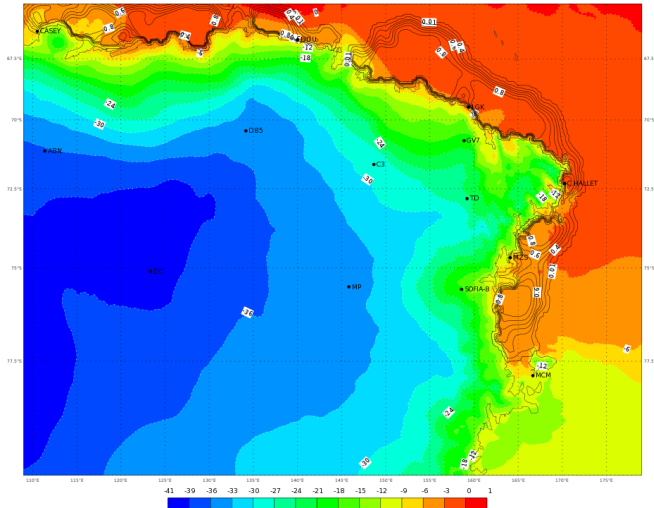
ECMWF 29 Gennaio 2018 00UTC Forecast T+48 VT: Mercoledì 31 Gennaio 2018 00UTC
Terra Vittoria - Total cloud cover (oct)



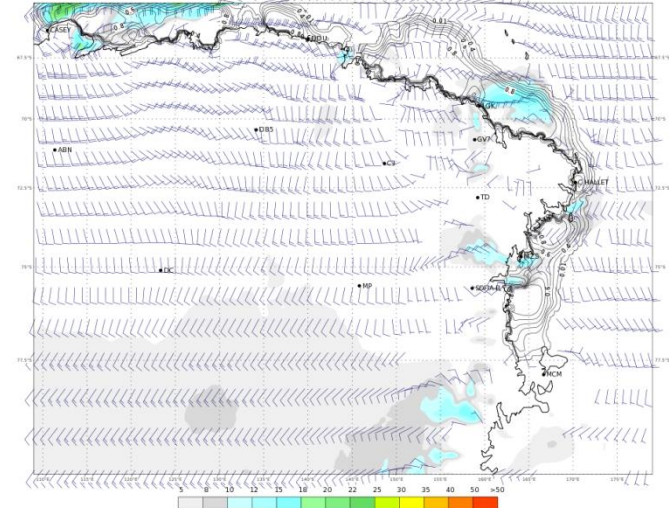
ECMWF 29 Gennaio 2018 00UTC Forecast T+48 VT: Mercoledì 31 Gennaio 2018 00UTC
Terra Vittoria - Geopotential at 500 hPa + 6h accumulated precipitation (mm)



ECMWF 29 Gennaio 2018 00UTC Forecast T+48 VT: Mercoledì 31 Gennaio 2018 00UTC
Terra Vittoria - Temperature at 2 m (°C)



ECMWF 29 Gennaio 2018 00UTC Forecast T+48 VT: Mercoledì 31 Gennaio 2018 00UTC
Terra Vittoria - Wind at 10 m (kts)

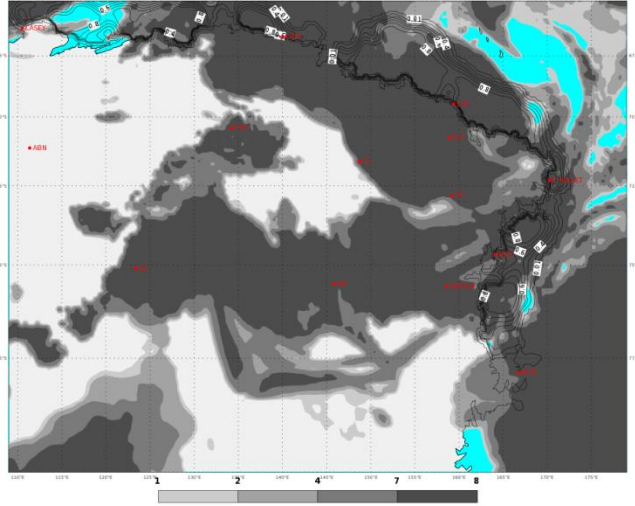


PREVISIONI - FORECASTS

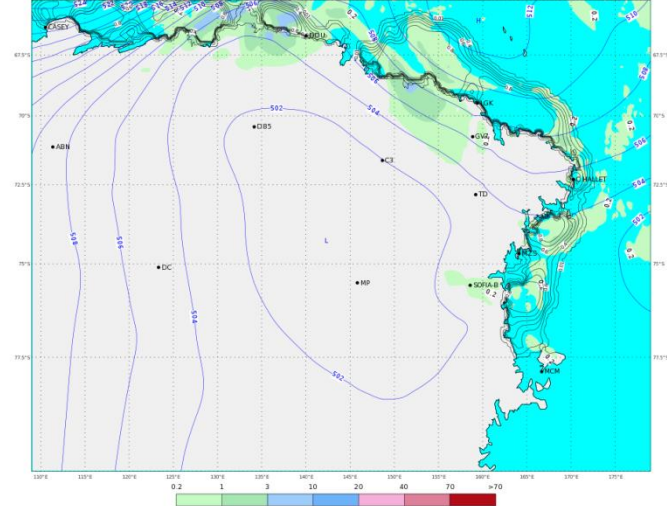
DOMANI - ORE 19 LT

TOMORROW - 19 LT

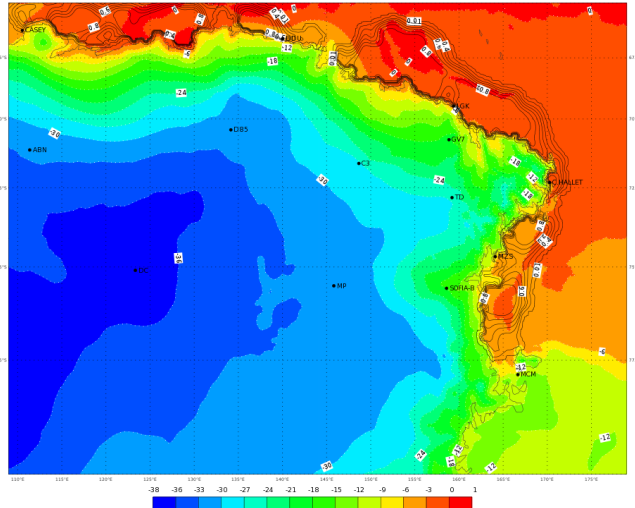
ECMWF 29 Gennaio 2018 00UTC Forecast T+54 VT: Mercoledì 31 Gennaio 2018 06UTC
Terra Vittoria - Total cloud cover (oct)



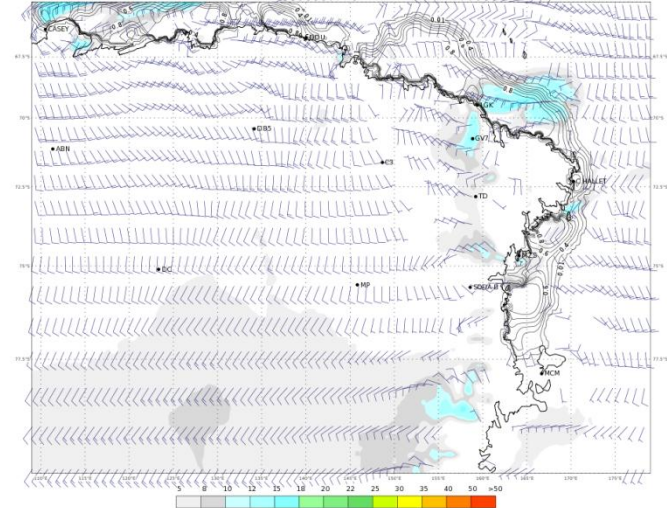
ECMWF 29 Gennaio 2018 00UTC Forecast T+54 VT: Mercoledì 31 Gennaio 2018 06UTC
Terra Vittoria - Geopotential at 500 hPa + 6h accumulated precipitation (mm)



ECMWF 29 Gennaio 2018 00UTC Forecast T+54 VT: Mercoledì 31 Gennaio 2018 06UTC
Terra Vittoria - Temperature at 2 m (°C)






ECMWF 29 Gennaio 2018 00UTC Forecast T+54 VT: Mercoledì 31 Gennaio 2018 06UTC
Terra Vittoria - Wind at 10 m (kts)





WEATHER FORECAST FOR TOMORROW AT TERRA NOVA BAY

Wednesday 31/01/2018

	ORE 07	ORE 13	ORE 19
CIELO			
FENOMENI	NIL	NIL	NIL
VENTO MZS	WSW 05/10 KT	WSW 05/10 KT	WSW 05/10 KT
VENTO BOULDER	WSW 10/15 KT	WSW 10/15 KT	WSW 10/15 KT
TEMPERATURA [°C]	-08/-06 °C	-07/-05 °C	-07/-05 °C
WIND CHILL [°C]	-15/-12 °C	-14/-11 °C	-14/-11 °C
STATO DEL MARE	POCO MOSSO O MOSSO	POCO MOSSO O MOSSO	POCO MOSSO O MOSSO

WEATHER TENDENCY AT TERRA NOVA BAY

Thursday 01/02/2018

	MATTINO	POMERIGGIO
CIELO		
FENOMENI	NIL	NIL
VENTO MZS	WSW 05/10 KT	WSW 10/15 KT
VENTO BOULDER	WSW 10/15 KT	WSW 15/20 KT
TEMPERATURA [°C]	-08/-06 °C	-07/-05 °C
WIND CHILL [°C]	-15/-12 °C	-16/-13 °C
STATO DEL MARE	POCO MOSSO O MOSSO	POCO MOSSO O MOSSO



Extreme Values of Yesterday



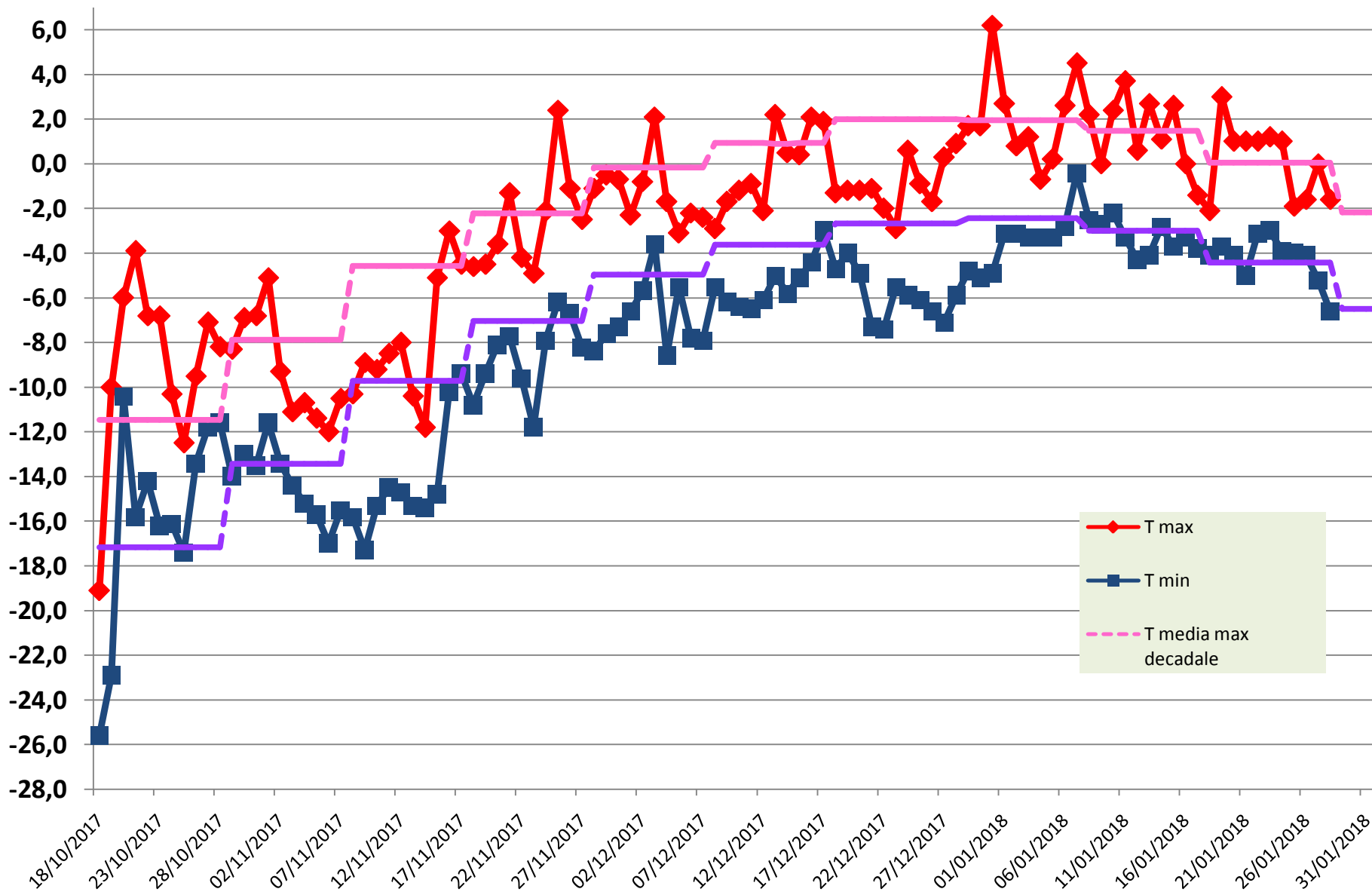
29/01/2018 UTC time (13:00 28/01 - 13:00 29/01)		
MAX temperature	(ore 15:13/L)	-1.6 °C
MIN temperature	(ore 01:02/L)	-6.6 °C
MAX humidity	(ore 23:39/L)	70 %
MIN humidity	(ore 02:35/L)	28 %
MAX wind direction/speed	(ore 01:07/L)	248/41.9 KT

Remark: *the reported values are referred to the previous day in terms of Universal Time and not in local time (UTC+13).*



Temperature measured during the XXXIII Expedition

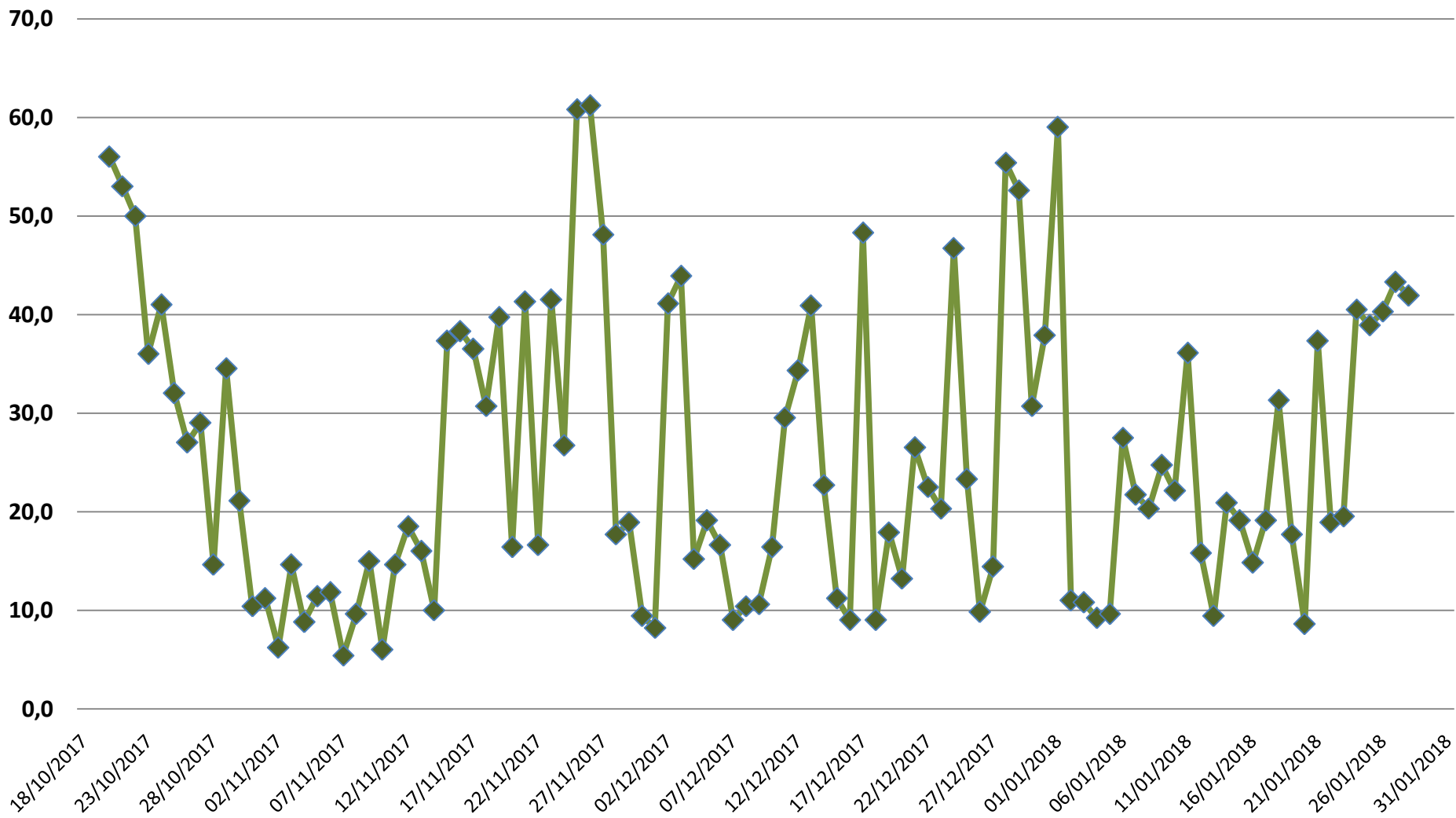
ENEIDE weather station (MZS) - Antarctic Climatology Observatory





MAX wind [kt] measured during the XXXIII Expedition

ENEIDE weather station (MZS) - Antarctic Climatology Observatory



**Per ulteriori informazioni contattare
l'Ufficio Meteorologico di MZS
int. 510**

**For further information please contact
MZS Met Office
ext. 510**

AVVERTENZA/WARNING

*Le presenti informazioni NON sono destinate alla pianificazione di volo e/o pre-volo
The informations here presented are NOT intended for flight planning and/or pre-flight*

[*Indietro all'indice – back to index*](#)