



WEATHER

Meteorological observations and forecasts

Thursday 01/02/2018

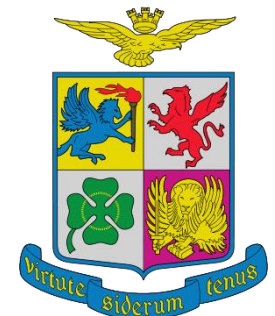
MET Office - "Mario Zucchelli" Base - Terranova Bay

Ten. Col. Luigi Verzelletti
Cap. Francesco Mariella



Agenzia nazionale per le nuove tecnologie,
l'energia e lo sviluppo economico sostenibile

Information NOT intended for flight planning and pre-flight



Indice dei contenuti Table of Contents

Puoi saltare direttamente sull'argomento di interesse cliccandoci sopra

Jump directly to the issue of your interest just clicking on it

1. [Situazione – Situation](#)
2. [Ultime Misure delle Stazioni Meteo Automatiche - Last Measurements from Automatic Weather Stations](#)
3. [Dati attuali a MZS – Current data at MZS \(ENEIDE – ‘Campo Meteo’\)](#)
4. [Mappe di previsione: oggi ore 07/L – Forecast Maps: today 07/L](#)
5. [Mappe di previsione: oggi ore 13/L – Forecast Maps: today 13/L](#)
6. [Mappe di previsione: oggi ore 19/L – Forecast Maps: today 19/L](#)
7. [Tempo previsto oggi a Baia Terra Nova – Weather Forecast for today at Terra Nova Bay](#)
8. [Mappe di previsione: domani ore 01/L – Forecast Maps: tomorrow 01/L](#)
9. [Mappe di previsione: domani ore 07/L – Forecast Maps: tomorrow 07/L](#)
10. [Mappe di previsione: domani ore 13/L – Forecast Maps: tomorrow 13/L](#)
11. [Mappe di previsione: domani ore 19/L – Forecast Maps: tomorrow 19/L](#)
12. [Tempo previsto domani a Baia Terra Nova – Weather Forecast for tomorrow at Terra Nova Bay](#)
13. [Tendenza per dopodomani a Baia Terra Nova – Weather Tendency for the day after tomorrow at Terra Nova Bay](#)
14. [Valori estremi di ieri – Extreme Values of Yesterday](#)
15. [Andamento delle Temperature durante la Spedizione](#)
16. [Andamento del vento massimo durante la Spedizione](#)
17. [Contatti - Contacts](#)



WEATHER

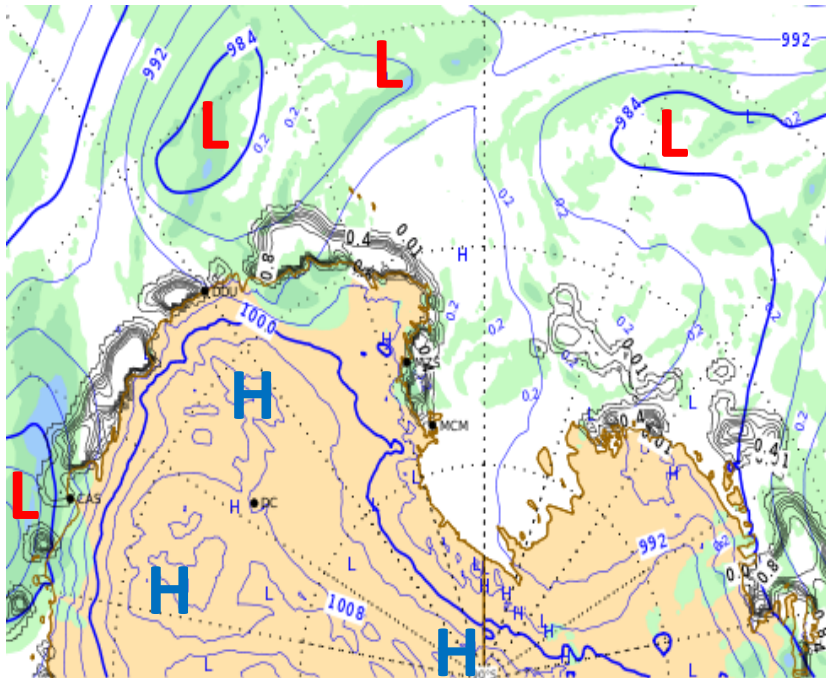
Meteorological observations and forecasts



Thursday 01/02/2018

Sea Level Pressure + Precipitation at 07:00

Latest Report



MARIO ZUCHELLI Station

2018-01-31 17:19:00 UTC (74° 41' 45.3" S, 164° 05' 31.8" E)
<http://www.climanartide.it>

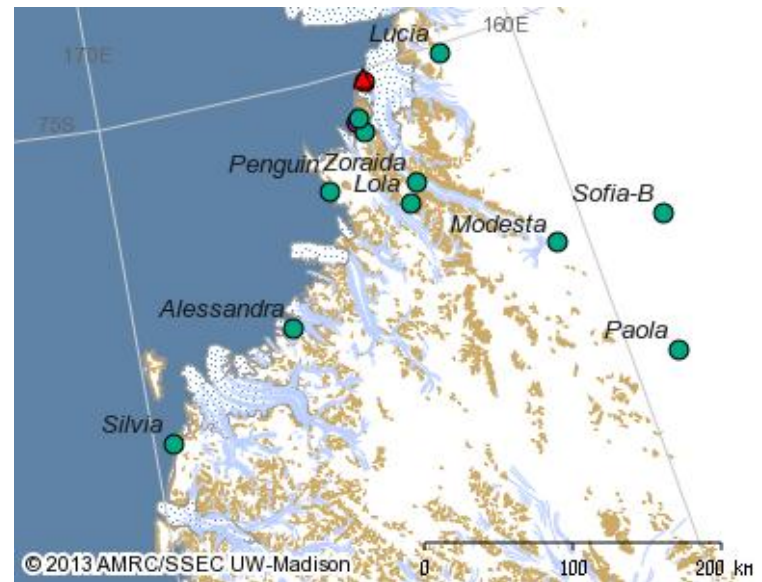
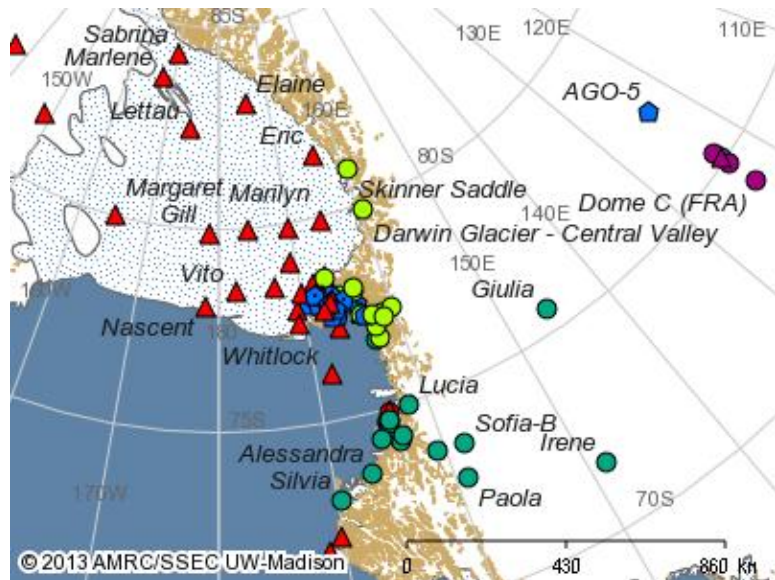
	Pressure (mba)	983.2
	Temperature (C°)	-6.7
	Wind Speed (knt)	5.2
	Relative Humidity (%)	78
	Sun Radiation (W/m ²)	52

VENTO AREA BOULDER: SW 28 KT (06:10 loc time recorded)

Automatic Weather Stations (AWS) Updates

AWS	Datetime UTC	Wind Direction [°]	Wind Speed [kts]	Wind Gust [kts]	Temperature [°C]	MAX_Temp [°C]	MIN_Temp [°C]	Humidity [%]	Pressure [hPa]
Alessandra	2018-01-31 16:00	270	2	3	-7.2	-6.7	-7.6	88	973.9
Arelis	2018-01-31 16:00	170	6	7	-7.0	-6.8	-7.1	11	974.9
Concordia	2018-01-31 16:00	220	7	10	-44.0	-42.1	-44.1	59	646.5
Eneide	2018-01-31 16:00	340	0	4	-6.6	-6.5	-6.7	83	983.1
Giulia	2018-01-31 16:00	230	6	7	-43.4	-42.6	-43.5	59	713.4
Lola	2018-01-31 16:00	160	8	8	//	//	//	//	//
Modesta	2018-01-31 16:00	300	16	20	-30.8	-30.5	-32.1	72	766.7
Paola	2018-01-31 16:00	290	6	13	-28.2	-27.3	-30.5	76	//
Rita	2018-01-31 16:00	260	0	14	-8.0	-7.9	-8.3	68	961.6
Silvia	2018-01-31 16:00	260	3	5	-9.6	-9.6	-9.8	//	928.4
Sofiab	2018-01-31 16:00	150	8	10	-20.5	-19.7	-20.5	85	811.2
Zoraida	2018-01-31 16:00	320	15	17	-16.4	-14.7	-16.4	77	889.7

N.B. I dati presenti non sono validati e quindi non adatti ad un uso operativo.



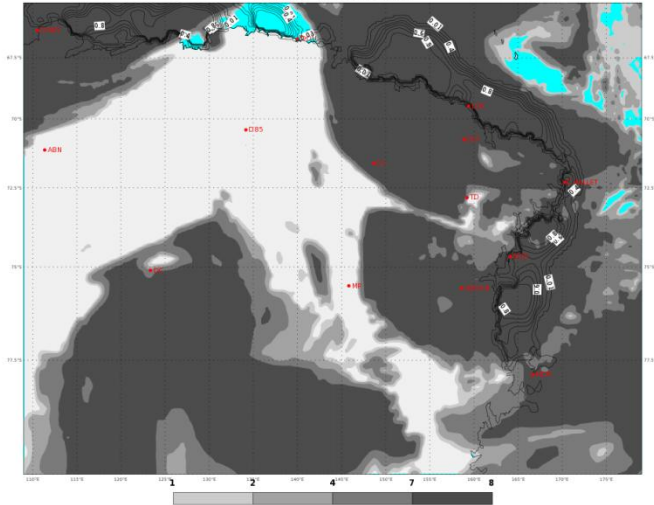
[Indietro all'indice – back to index](#)

PREVISIONI - FORECASTS

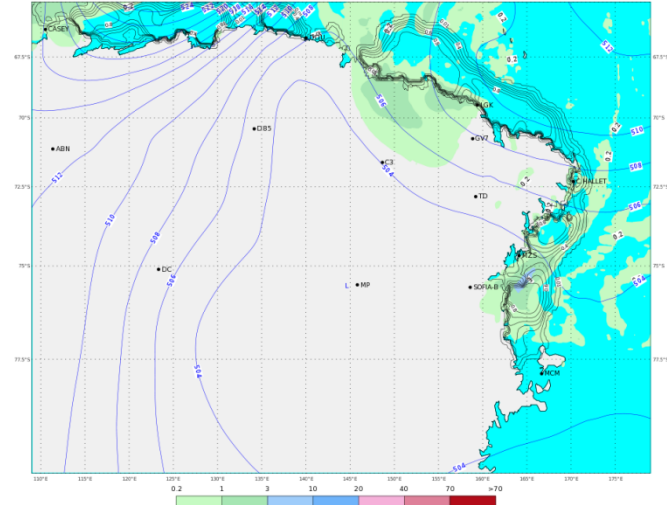
OGGI - ORE 07 LT

TODAY - 07 LT

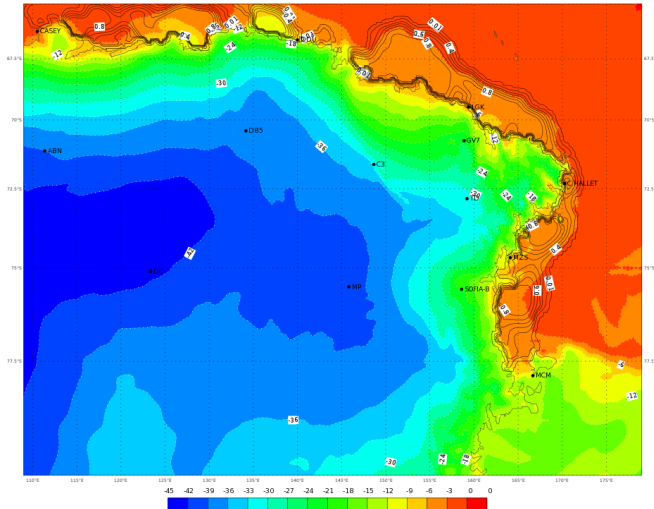
ECMWF 31 Gennaio 2018 00UTC Forecast T+18 VT: Mercoledì 31 Gennaio 2018 18UTC
Terra Vittoria - Total cloud cover (oct)



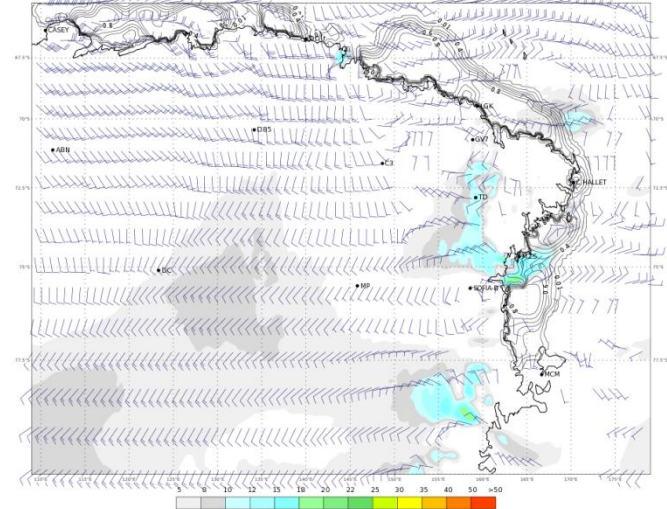
ECMWF 31 Gennaio 2018 00UTC Forecast T+18 VT: Mercoledì 31 Gennaio 2018 18UTC
Terra Vittoria - Geopotential at 500 hPa + 6h accumulated precipitation (mm)



ECMWF 31 Gennaio 2018 00UTC Forecast T+18 VT: Mercoledì 31 Gennaio 2018 18UTC
Terra Vittoria - temperature at 2 m (°C)



ECMWF 31 Gennaio 2018 00UTC Forecast T+18 VT: Mercoledì 31 Gennaio 2018 18UTC
Terra Vittoria - Wind at 10 m (kts)

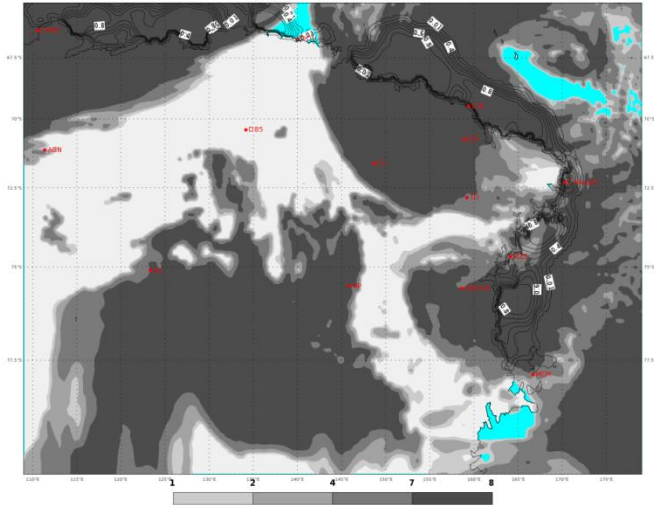


PREVISIONI - FORECASTS

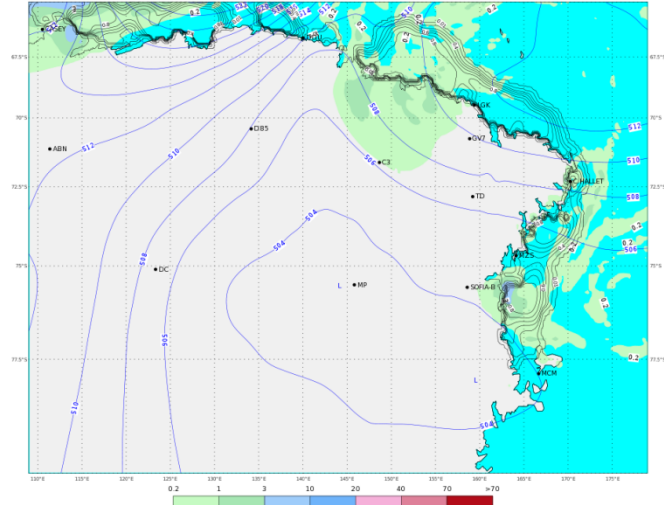
OGGI - ORE 13 LT

TODAY - 13 LT

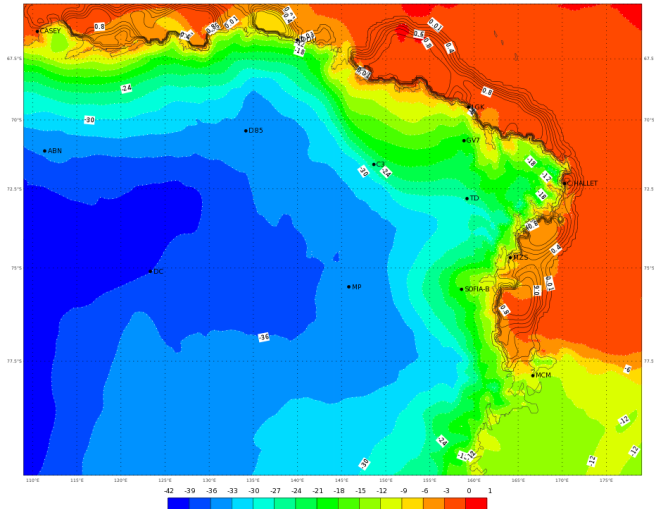
ECMWF 31 Gennaio 2018 00UTC Forecast T+24 VT: Giovedì 01 Febbraio 2018 00UTC
Terra Vittoria - Total cloud cover (oct)



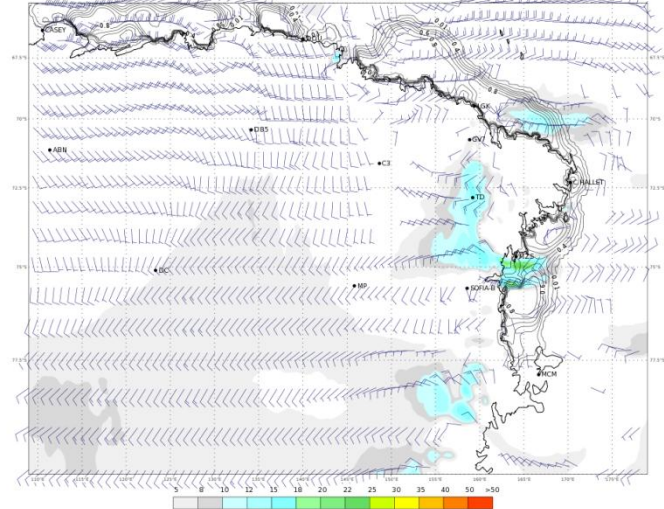
ECMWF 31 Gennaio 2018 00UTC Forecast T+24 VT: Giovedì 01 Febbraio 2018 00UTC
Terra Vittoria - Geopotential at 500 hPa + 6h accumulated precipitation (mm)



ECMWF 31 Gennaio 2018 00UTC Forecast T+24 VT: Giovedì 01 Febbraio 2018 00UTC
Terra Vittoria - temperature at 2 m (°C)



ECMWF 31 Gennaio 2018 00UTC Forecast T+24 VT: Giovedì 01 Febbraio 2018 00UTC
Terra Vittoria - Wind at 10 m (kts)

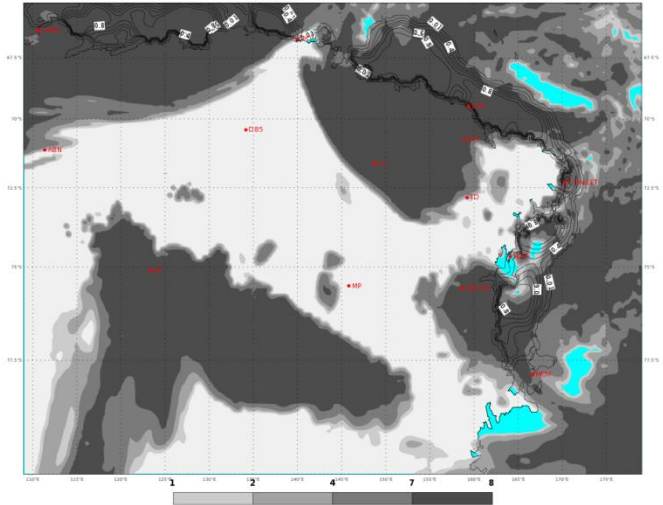


PREVISIONI - FORECASTS

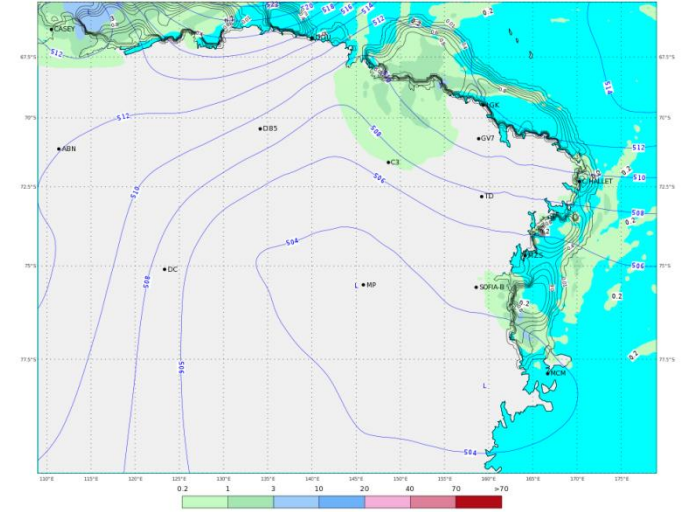
OGGI - ORE 19 LT

TODAY - 19 LT

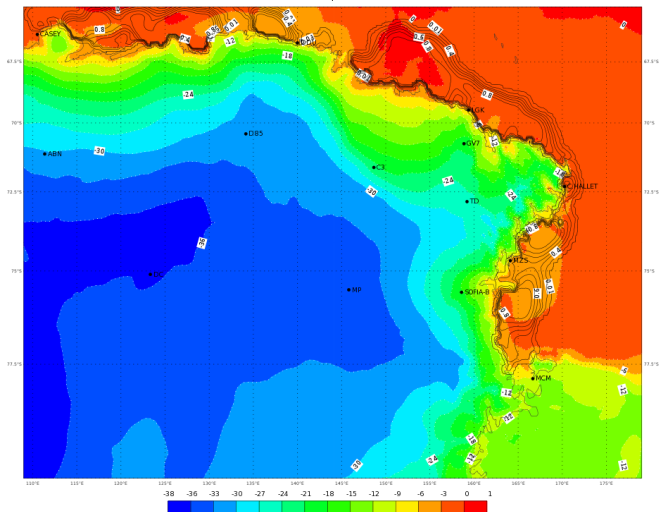
ECMWF 31 Gennaio 2018 00UTC Forecast T+30 VT: Giovedì 01 Febbraio 2018 06UTC
Terra Vittoria - Total cloud cover (oct)



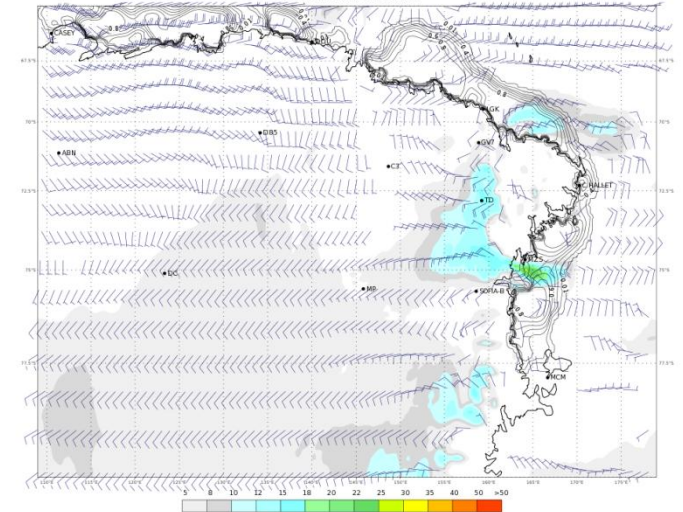
ECMWF 31 Gennaio 2018 00UTC Forecast T+30 VT: Giovedì 01 Febbraio 2018 06UTC
Terra Vittoria - Geopotential at 500 hPa + 6h accumulated precipitation (mm)



ECMWF 31 Gennaio 2018 00UTC Forecast T+30 VT: Giovedì 01 Febbraio 2018 06UTC
Terra Vittoria - Temperature at 2 m (°C)






ECMWF 31 Gennaio 2018 00UTC Forecast T+30 VT: Giovedì 01 Febbraio 2018 06UTC
Terra Vittoria - Wind at 10 m (kts)



WEATHER FORECAST FOR TODAY AT TERRA NOVA BAY

Thursday 01/02/2018

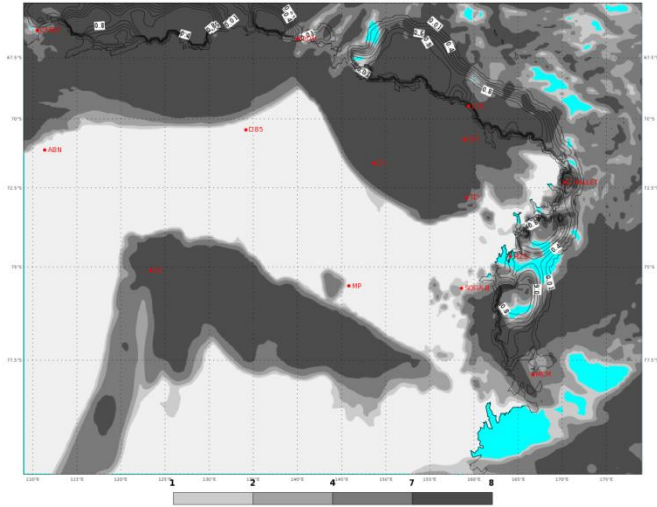
	ORE 07	ORE 13	ORE 19
CIELO			
FENOMENI	NIL	NIL	NIL
VENTO MZS	WSW 10/15 KT	WSW 20/30 KT	WSW 15/25 KT
VENTO BOULDER	WSW 20/25 KT	WSW 30/40 KT	WSW 25/35 KT
TEMPERATURA [°C]	-08/-06 °C	-07/-05 °C	-06/-04 °C
WIND CHILL [°C]	-17/-14 °C	-19/-16 °C	-16/-13 °C
STATO DEL MARE	POCO MOSSO	POCO MOSSO O MOSSO	POCO MOSSO O MOSSO

PREVISIONI - FORECASTS

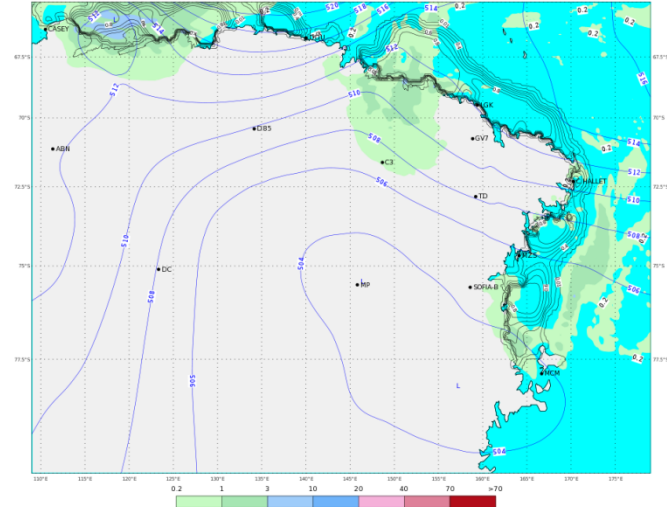
DOMANI - ORE 01 LT

TOMORROW - 01 LT

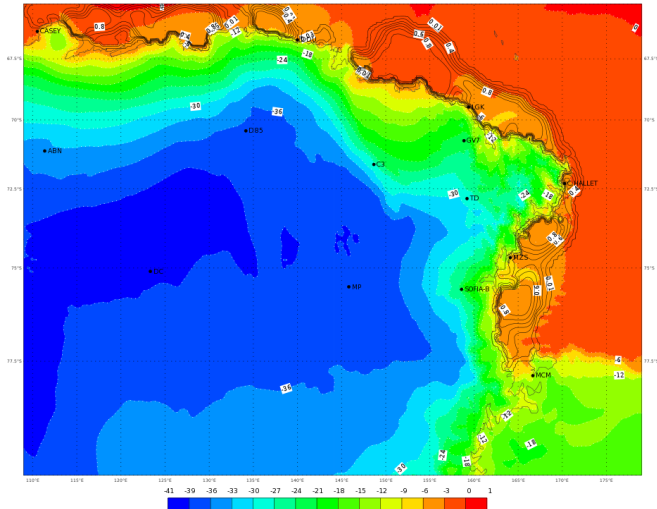
ECMWF 31 Gennaio 2018 00UTC Forecast T+36 VT: Giovedì 01 Febbraio 2018 12UTC
Terra Vittoria - Total cloud cover (oct)



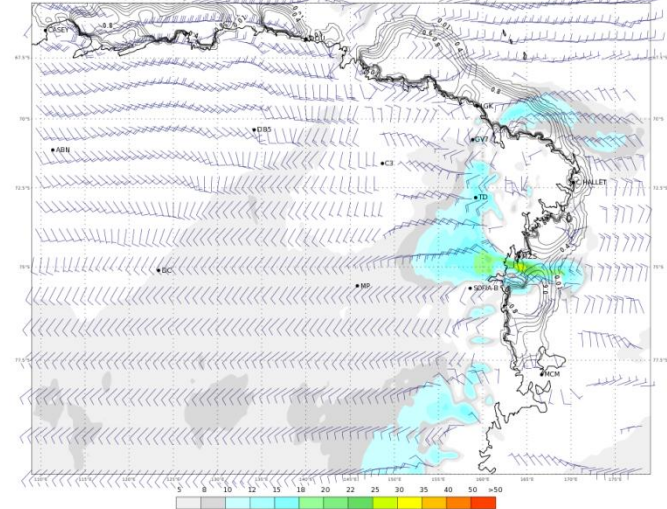
ECMWF 31 Gennaio 2018 00UTC Forecast T+36 VT: Giovedì 01 Febbraio 2018 12UTC
Terra Vittoria - Geopotential at 500 hPa + 6h accumulated precipitation (mm)



ECMWF 31 Gennaio 2018 00UTC Forecast T+36 VT: Giovedì 01 Febbraio 2018 12UTC
Terra Vittoria - Temperature at 2 m (°C)



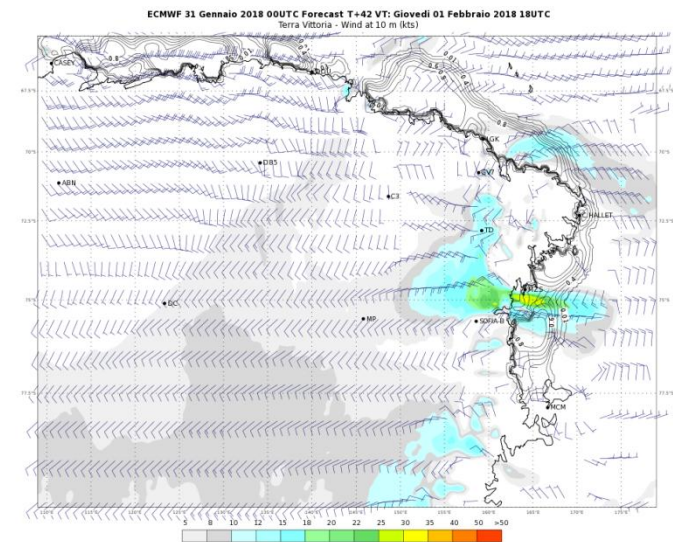
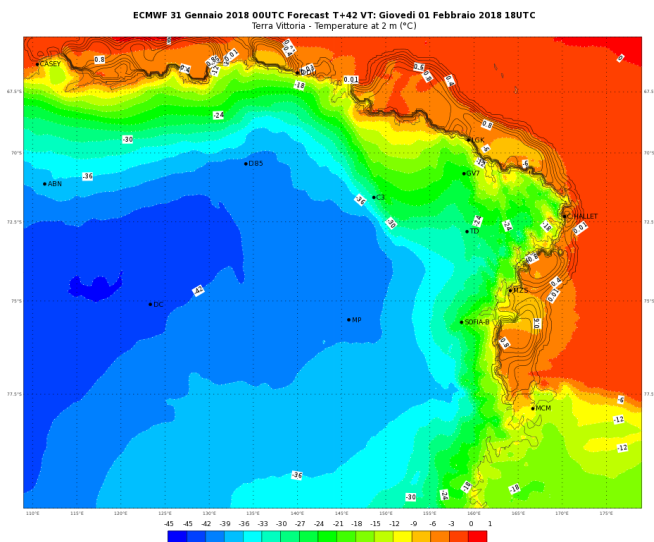
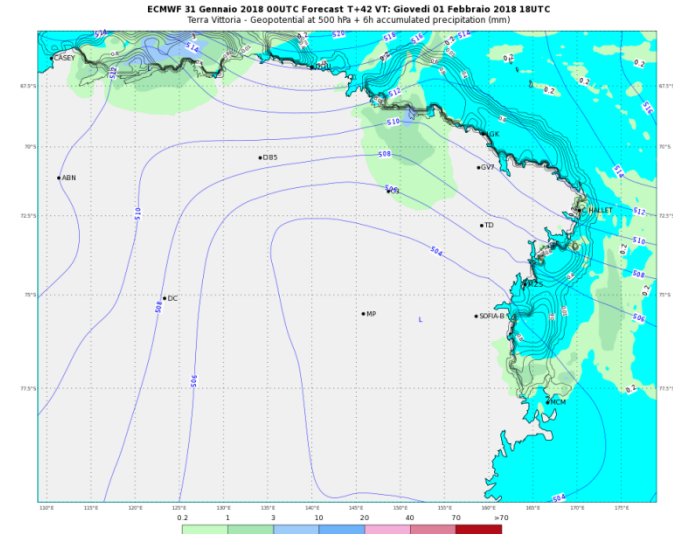
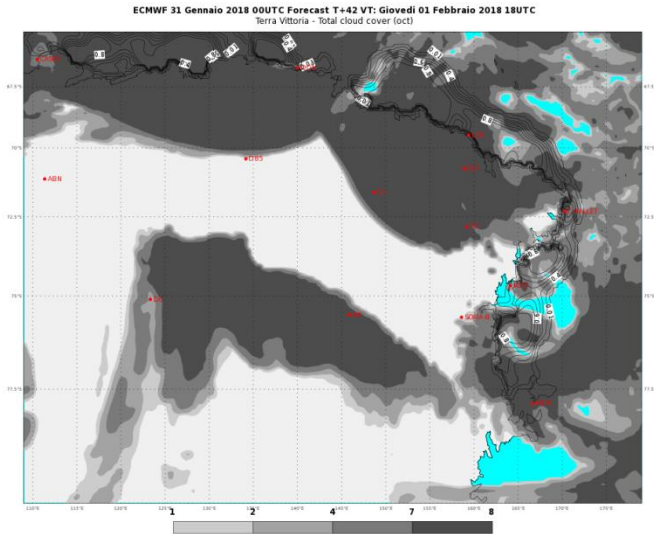
ECMWF 31 Gennaio 2018 00UTC Forecast T+36 VT: Giovedì 01 Febbraio 2018 12UTC
Terra Vittoria - Wind at 10 m (kts)



PREVISIONI - FORECASTS

DOMANI - ORE 07 LT

TOMORROW - 07 LT

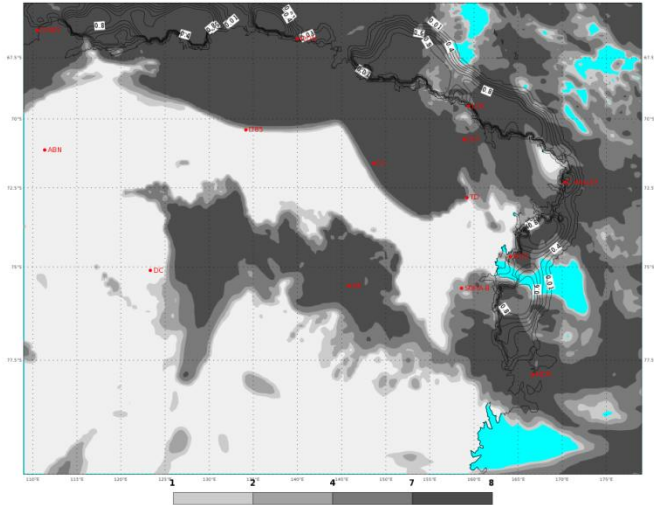


PREVISIONI - FORECASTS

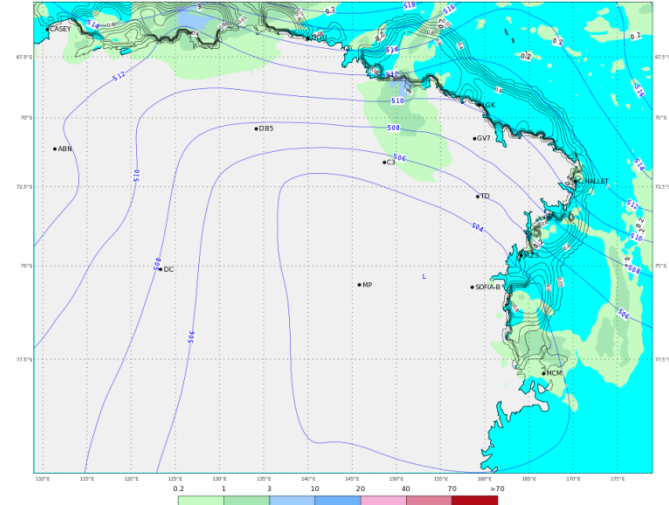
DOMANI - ORE 13 LT

TOMORROW - 13 LT

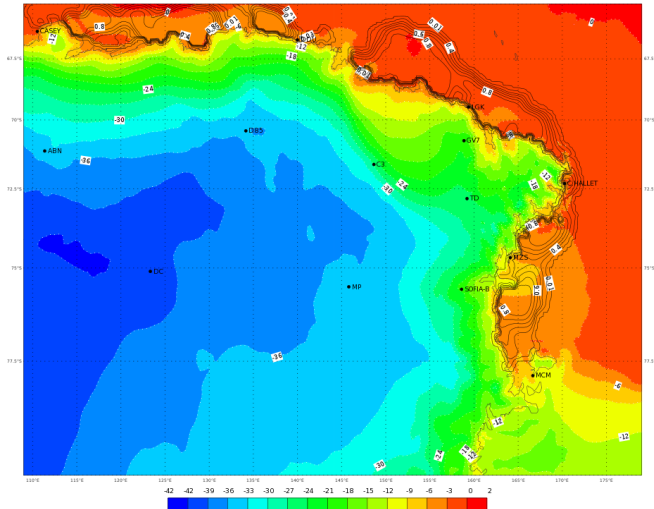
ECMWF 31 Gennaio 2018 00UTC Forecast T+48 VT: Venerdì 02 Febbraio 2018 00UTC
Terra Vittoria - Total cloud cover (oct)



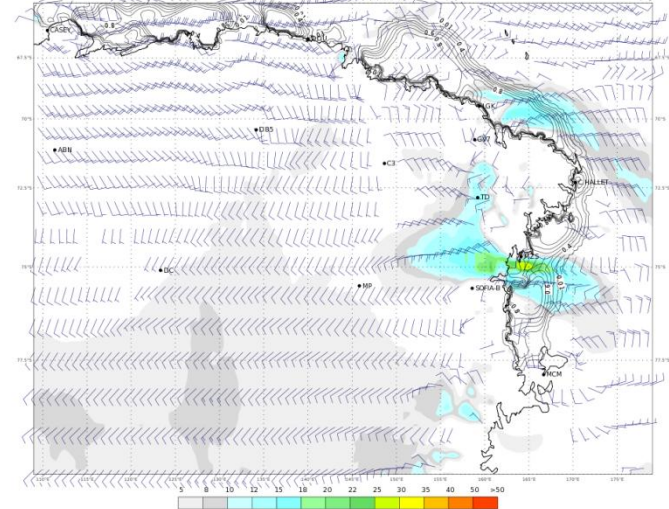
ECMWF 31 Gennaio 2018 00UTC Forecast T+48 VT: Venerdì 02 Febbraio 2018 00UTC
Terra Vittoria - Geopotential at 500 hPa + 6h accumulated precipitation (mm)



ECMWF 31 Gennaio 2018 00UTC Forecast T+48 VT: Venerdì 02 Febbraio 2018 00UTC
Terra Vittoria - temperature at 2 m (°C)



ECMWF 31 Gennaio 2018 00UTC Forecast T+48 VT: Venerdì 02 Febbraio 2018 00UTC
Terra Vittoria - Wind at 10 m (kts)

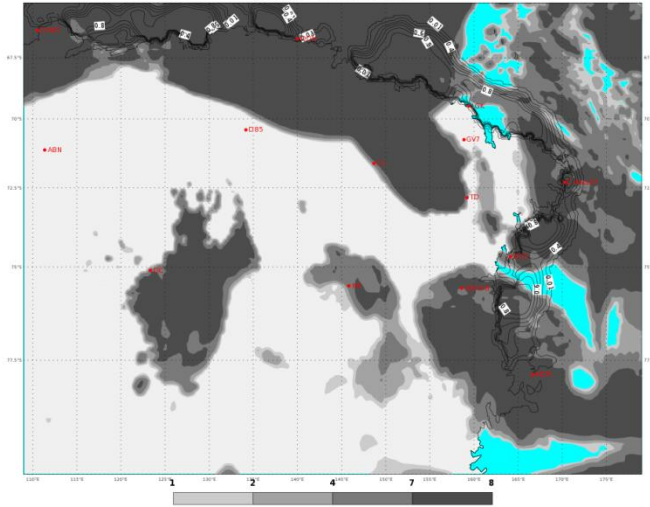


PREVISIONI - FORECASTS

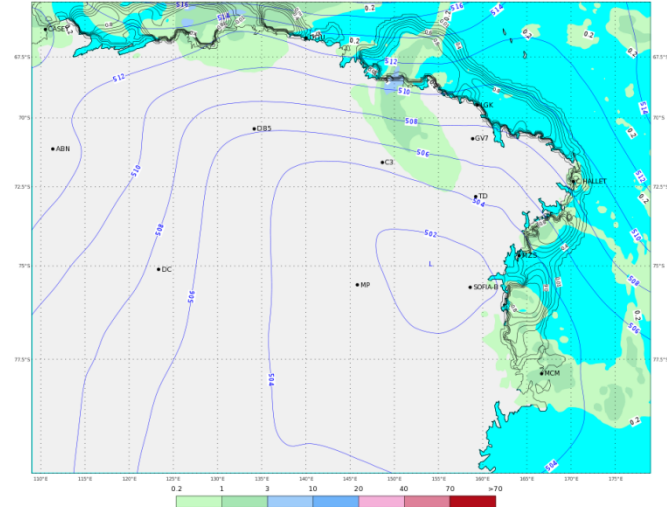
DOMANI - ORE 19 LT

TOMORROW - 19 LT

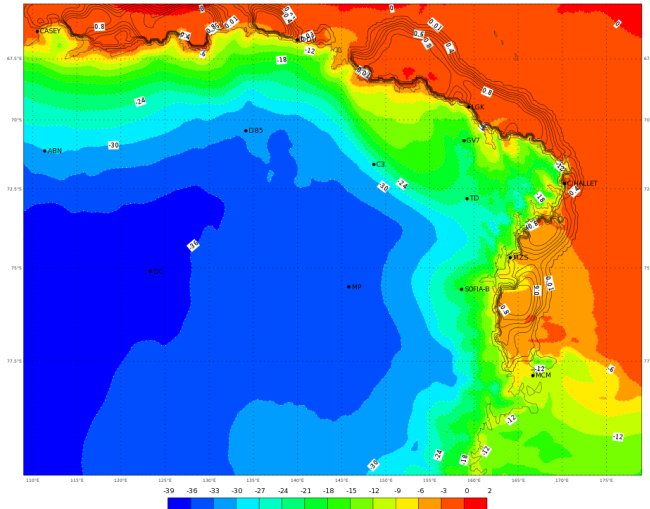
ECMWF 31 Gennaio 2018 00UTC Forecast T+54 VT: Venerdì 02 Febbraio 2018 06UTC
Terra Vittoria - Total cloud cover (oct)



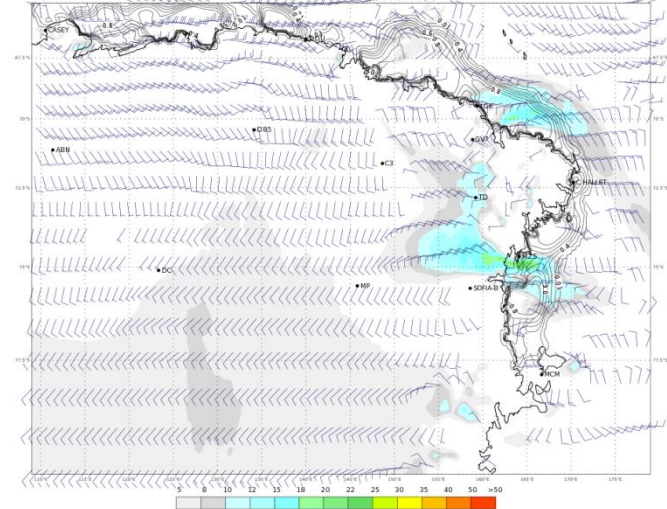
ECMWF 31 Gennaio 2018 00UTC Forecast T+54 VT: Venerdì 02 Febbraio 2018 06UTC
Terra Vittoria - Geopotential at 500 hPa + 6h accumulated precipitation (mm)



ECMWF 31 Gennaio 2018 00UTC Forecast T+54 VT: Venerdì 02 Febbraio 2018 06UTC
Terra Vittoria - temperature at 2 m (°C)






ECMWF 31 Gennaio 2018 00UTC Forecast T+54 VT: Venerdì 02 Febbraio 2018 06UTC
Terra Vittoria - Wind at 10 m (kts)





WEATHER FORECAST FOR TOMORROW AT TERRA NOVA BAY

Friday 02/02/2018

	ORE 07	ORE 13	ORE 19
CIELO			
FENOMENI	NIL	NIL	NIL
VENTO MZS	WSW 15/25 KT	WSW 20/30 KT	WSW 20/30 KT
VENTO BOULDER	WSW 20/30 KT	WSW 30/40 KT	WSW 30/40 KT
TEMPERATURA [°C]	-08/-06 °C	-07/-05 °C	-07/-05 °C
WIND CHILL [°C]	-19/-16 °C	-19/-16 °C	-19/-16 °C
STATO DEL MARE	POCO MOSSO O MOSSO	POCO MOSSO O MOSSO	POCO MOSSO O MOSSO

WEATHER TENDENCY AT TERRA NOVA BAY

Saturday 03/02/2018

	MATTINO	POMERIGGIO
CIELO		
FENOMENI	NIL	DEBOLE CATABATICO
VENTO MZS	WSW 25/35 KT	WSW 30/40 KT
VENTO BOULDER	WSW 35/45 KT	WSW 40/50 KT
TEMPERATURA [°C]	-11/-09 °C	-08/-06 °C
WIND CHILL [°C]	-25/-22 °C	-21/-18 °C
STATO DEL MARE	MOSSO	MOSSO

http://mzs-pdc.mzs.pnra.it/meteo/bollettino_meteo.pdf

[Indietro all'indice – back to index](#)



Extreme Values of Yesterday



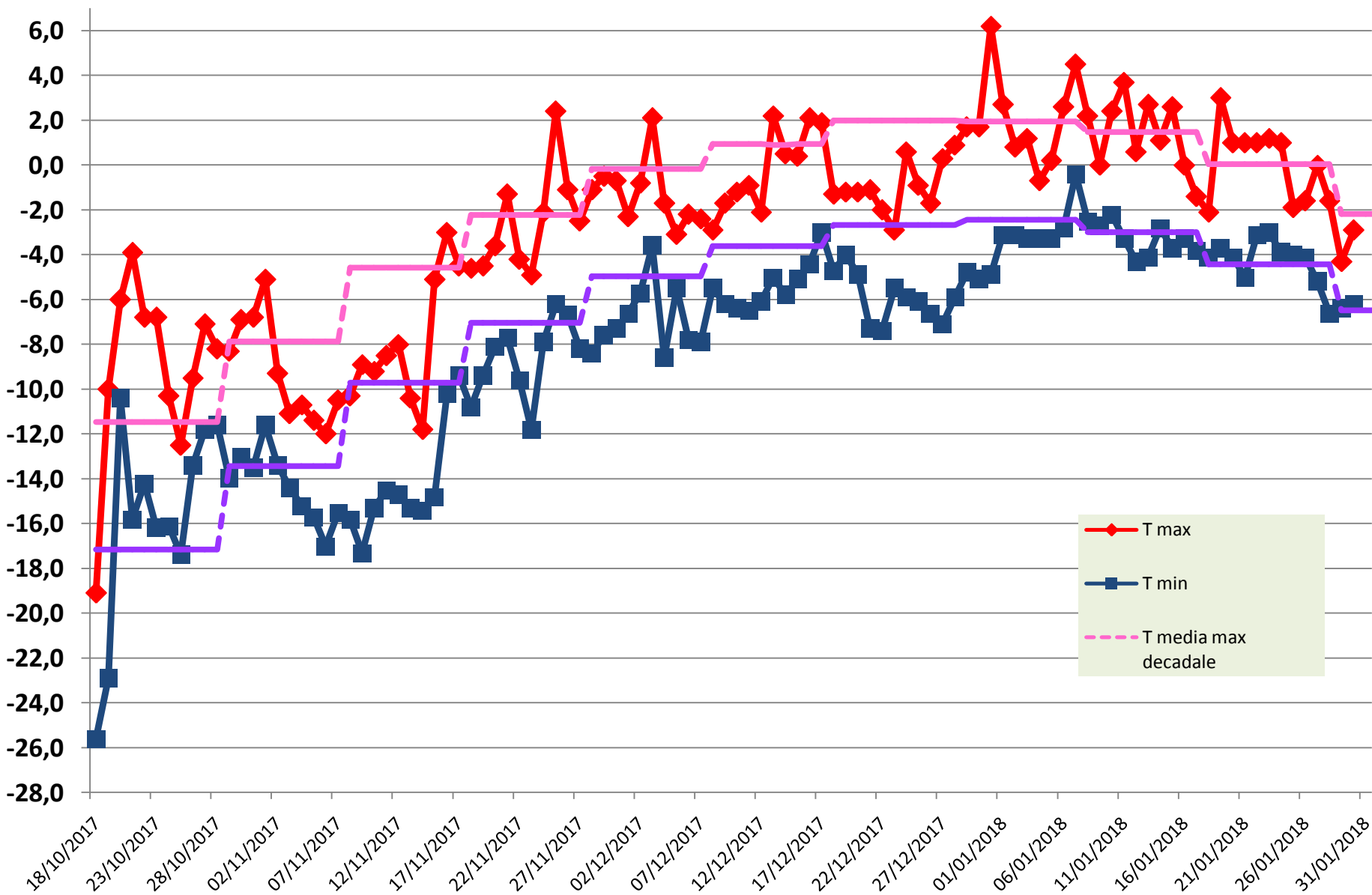
31/01/2018 UTC time (13:00 30/01 - 13:00 31/01)		
MAX temperature	(ore 15:32/L)	-2.9 °C
MIN temperature	(ore 07:36/L)	-6.2 °C
MAX humidity	(ore 03:57/L)	66 %
MIN humidity	(ore 10:54/L)	31 %
MAX wind direction/speed	(ore 07:57/L)	264/39.3 KT

Remark: *the reported values are referred to the previous day in terms of Universal Time and not in local time (UTC+13).*



Temperature measured during the XXXIII Expedition

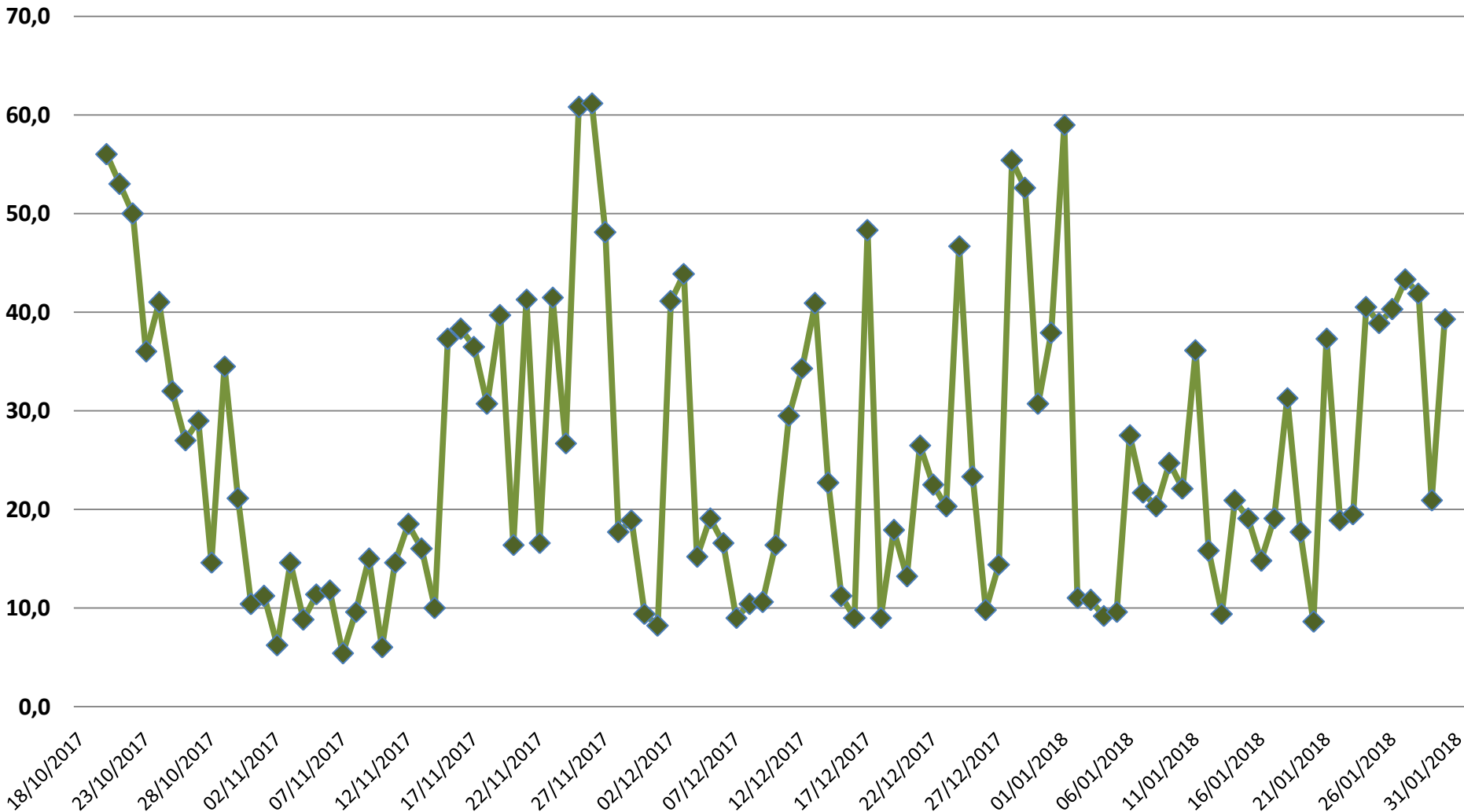
ENEIDE weather station (MZS) - Antarctic Climatology Observatory





MAX wind [kt] measured during the XXXIII Expedition

ENEIDE weather station (MZS) - Antarctic Climatology Observatory



**Per ulteriori informazioni contattare
l'Ufficio Meteorologico di MZS
int. 510**

**For further information please contact
MZS Met Office
ext. 510**

AVVERTENZA/WARNING

*Le presenti informazioni NON sono destinate alla pianificazione di volo e/o pre-volo
The informations here presented are NOT intended for flight planning and/or pre-flight*

[*Indietro all'indice – back to index*](#)